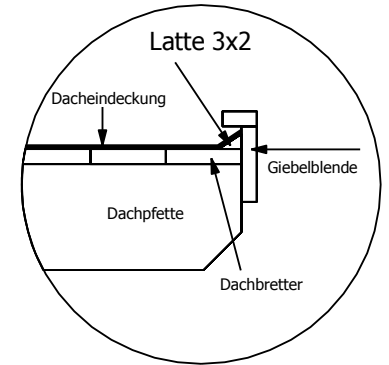
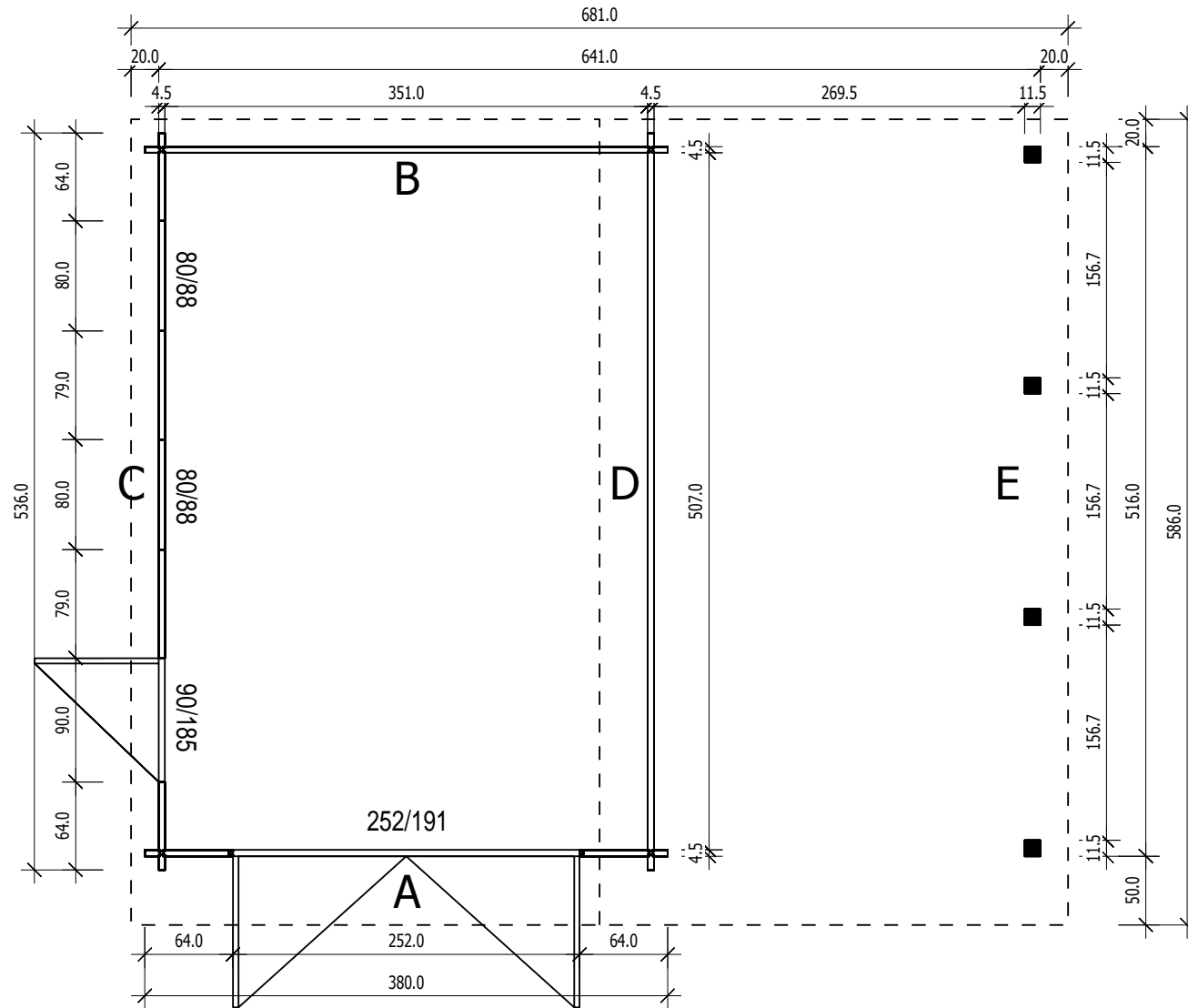


Bemerkung: die Ansicht von Turen, Fenster und anderen Teilen kann abweichen von diesem Bild

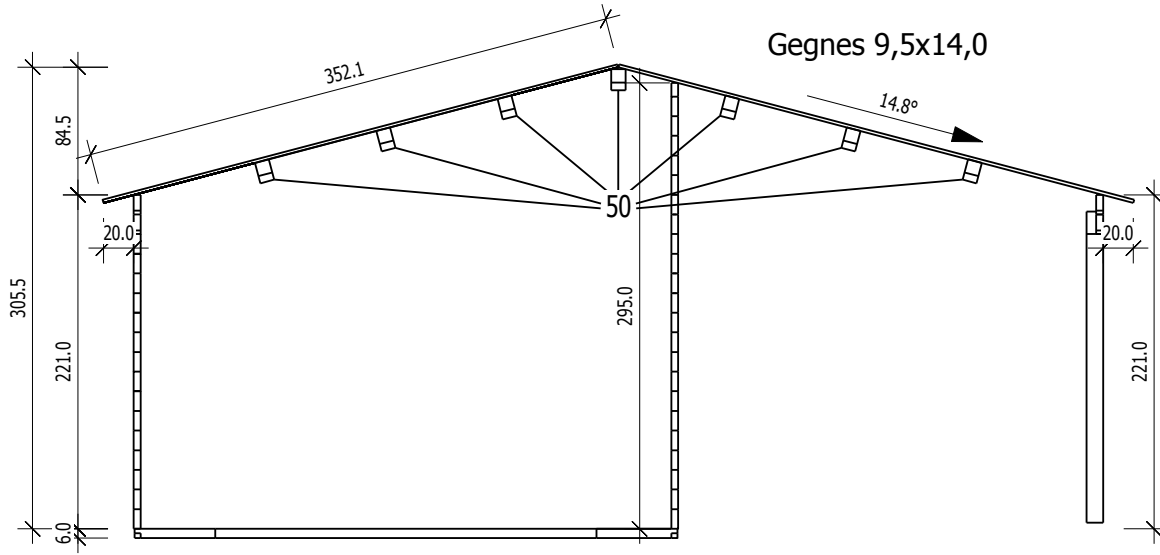


# Grundriss

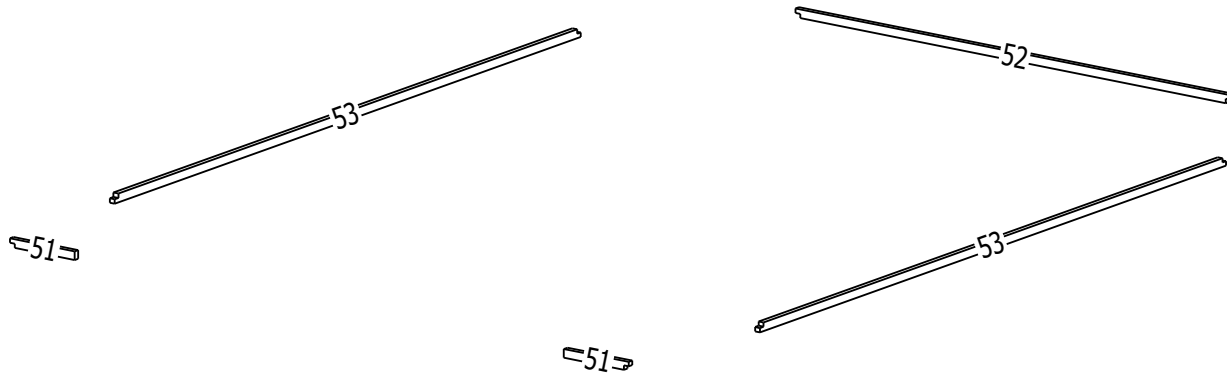
4,5



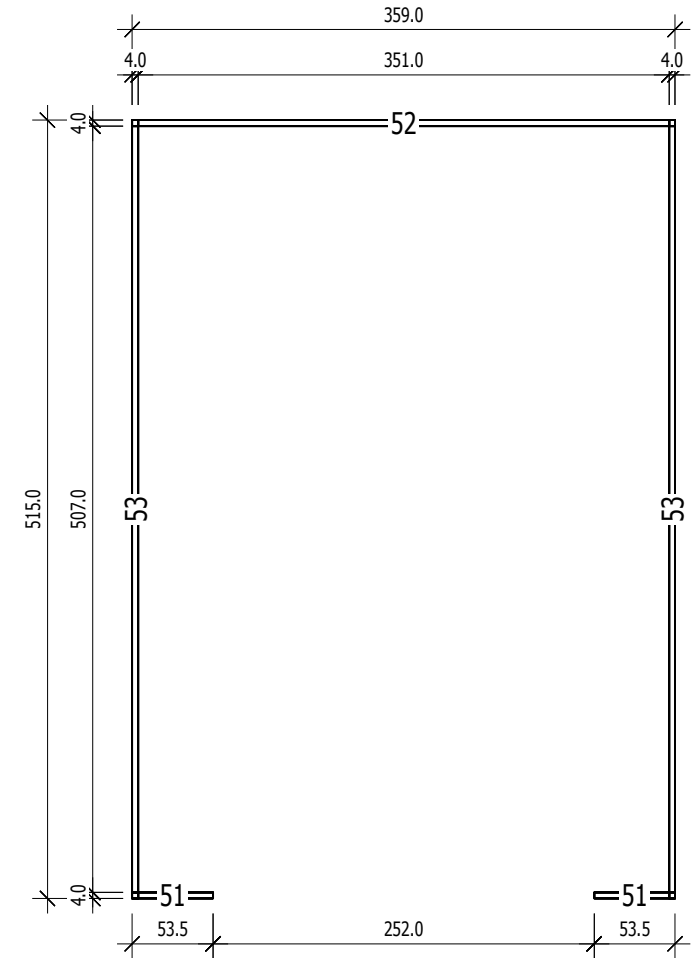
# Schnitt



Nr.	B	H	L	Psc	
	[cm]	[cm]	[cm]		
51	4,0	6,0	53,5	2	Maumedis
52	4,0	6,0	359,0	1	Maumedis
53	4,0	6,0	515,0	2	Maumedis



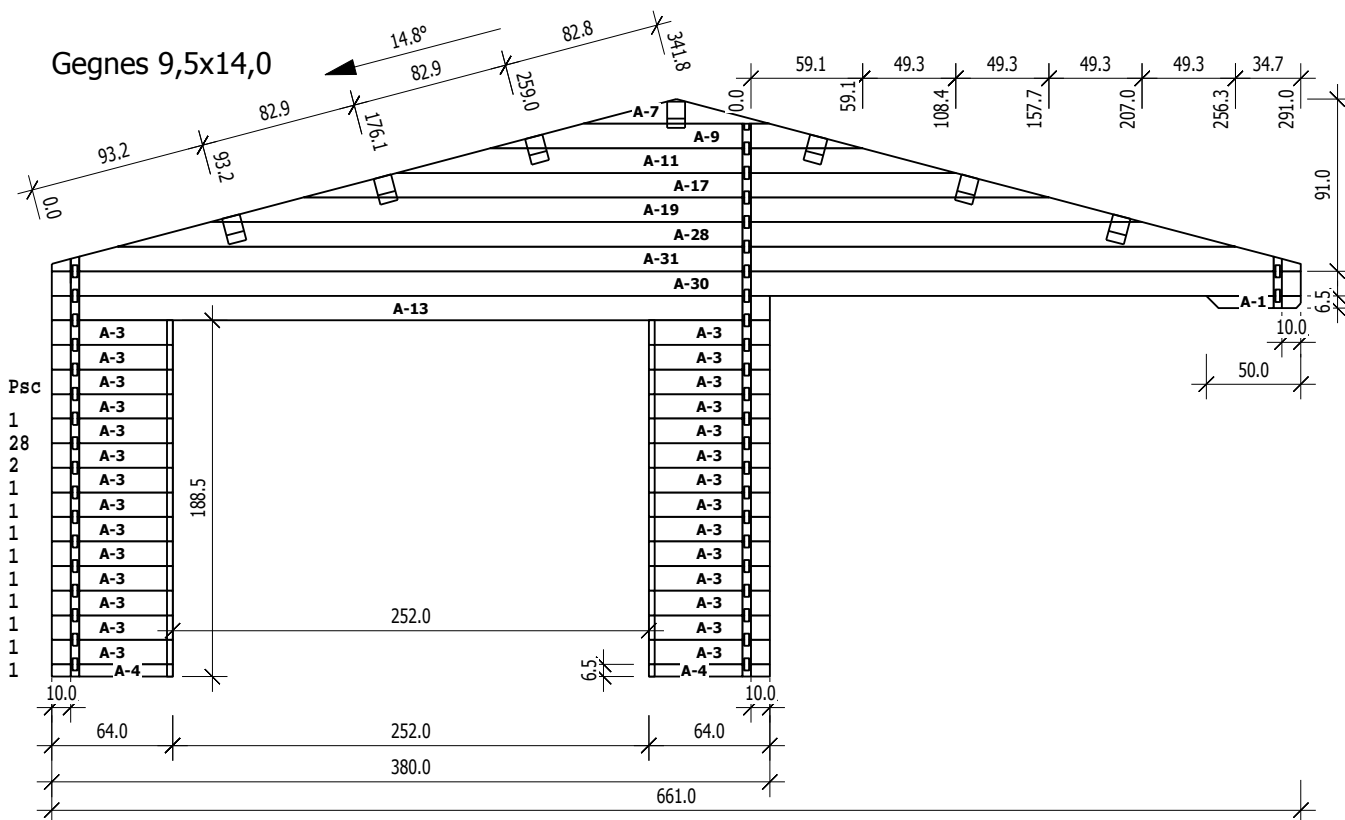
# Grundrahmenplan



4,5)

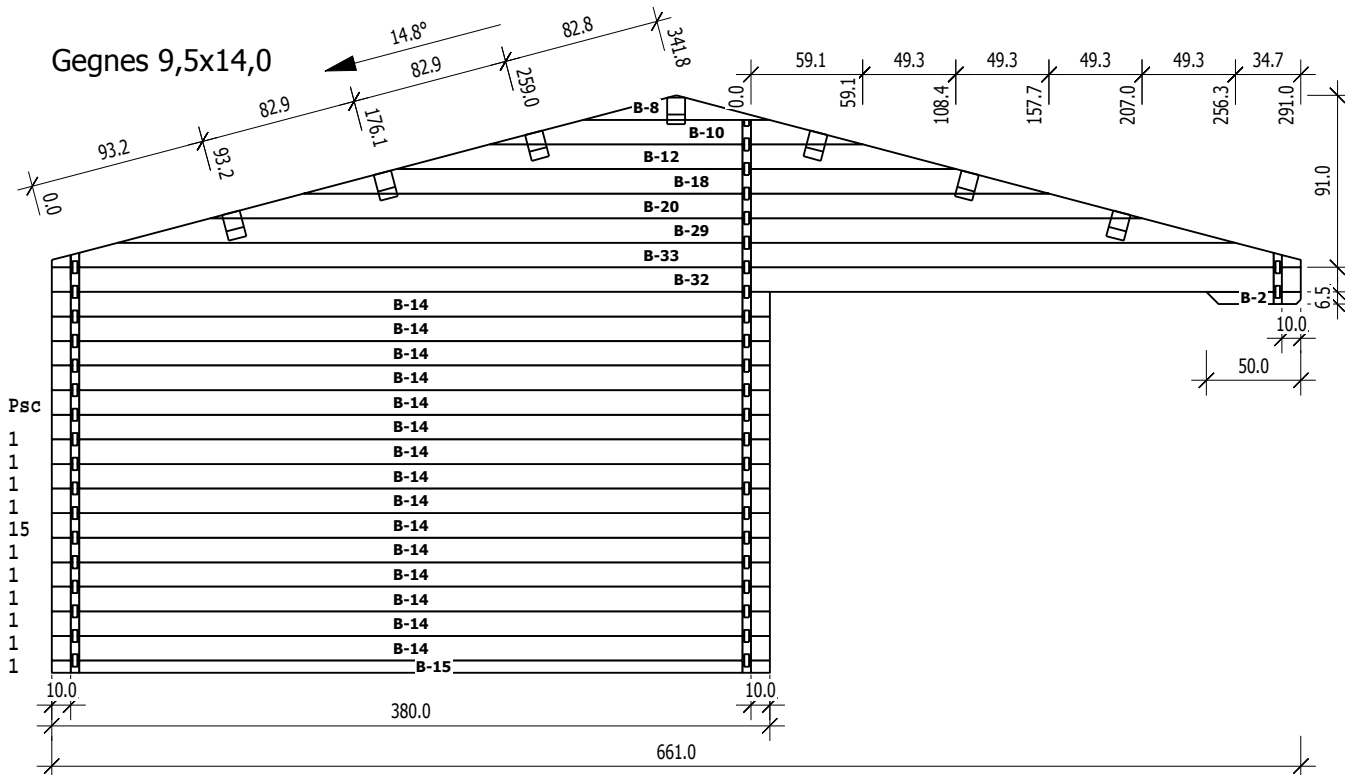
**A**  
**M 1:40**

	Nr	H	L	Psc
A	1	6,5	50,0	1
A	3	13,0	64,0	28
A	4	6,5	64,0	2
A	7	13,0	98,6	1
A	9	13,0	197,2	1
A	11	13,0	295,8	1
A	13	13,0	380,0	1
A	17	13,0	394,5	1
A	19	13,0	493,1	1
A	28	13,0	591,7	1
A	30	13,0	661,0	1
A	31	13,0	661,0	1



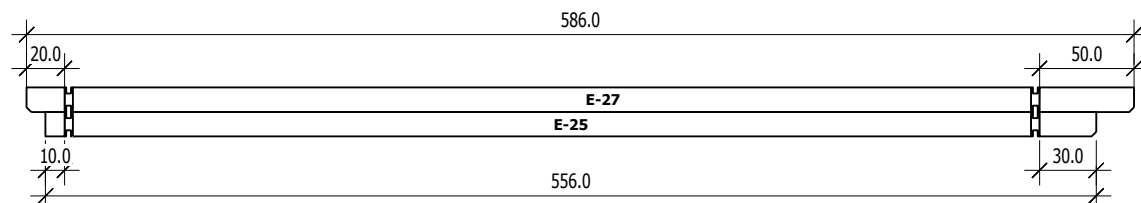
**B**  
**M 1:40**

	Nr	H	L	Psc
B	2	6,5	50,0	1
B	8	13,0	98,6	1
B	10	13,0	197,2	1
B	12	13,0	295,8	1
B	14	13,0	380,0	15
B	15	6,5	380,0	1
B	18	13,0	394,5	1
B	20	13,0	493,1	1
B	29	13,0	591,7	1
B	32	13,0	661,0	1
B	33	13,0	661,0	1



**E**  
**M 1:40**

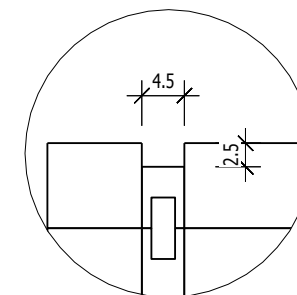
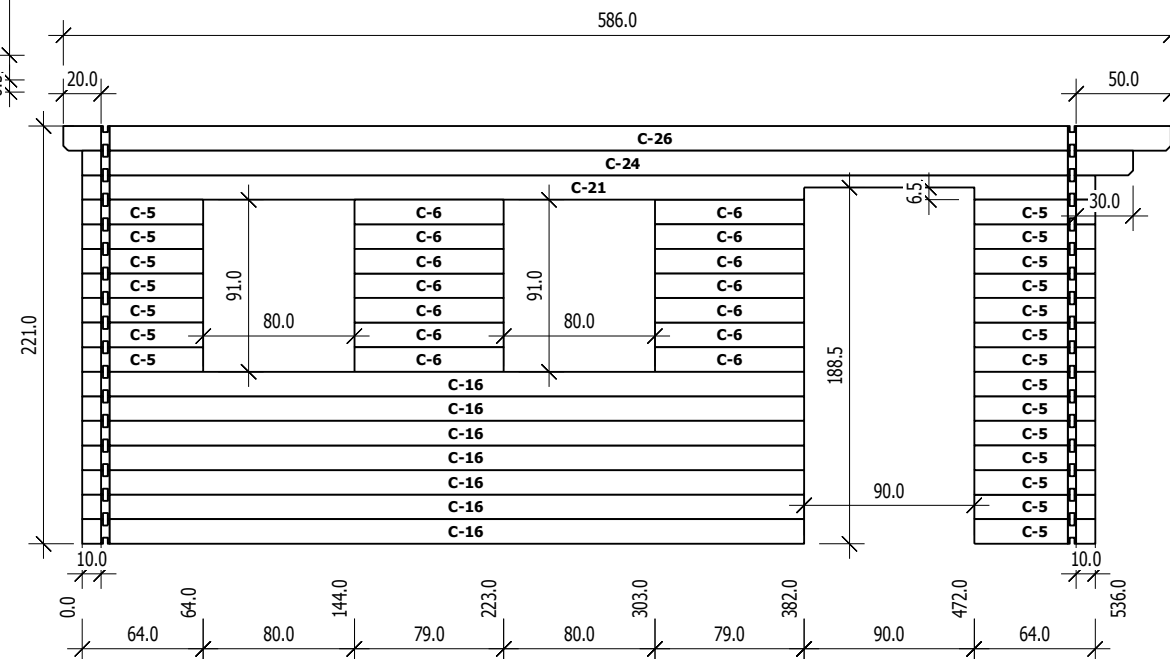
	Nr	H	L	Psc
E	25	13,0	556,0	1
E	27	13,0	586,0	1



4,5

**C**  
**M 1:40**

	Nr	H	L	Psc
C	5	13,0	64,0	21
C	6	13,0	79,0	14
C	16	13,0	382,0	7
C	21	13,0	536,0	1
C	24	13,0	556,0	1
C	26	13,0	586,0	1



**D**  
**M 1:40**

	Nr	H	L	Psc
D	22	13,0	536,0	22
D	23	9,0	536,0	1

