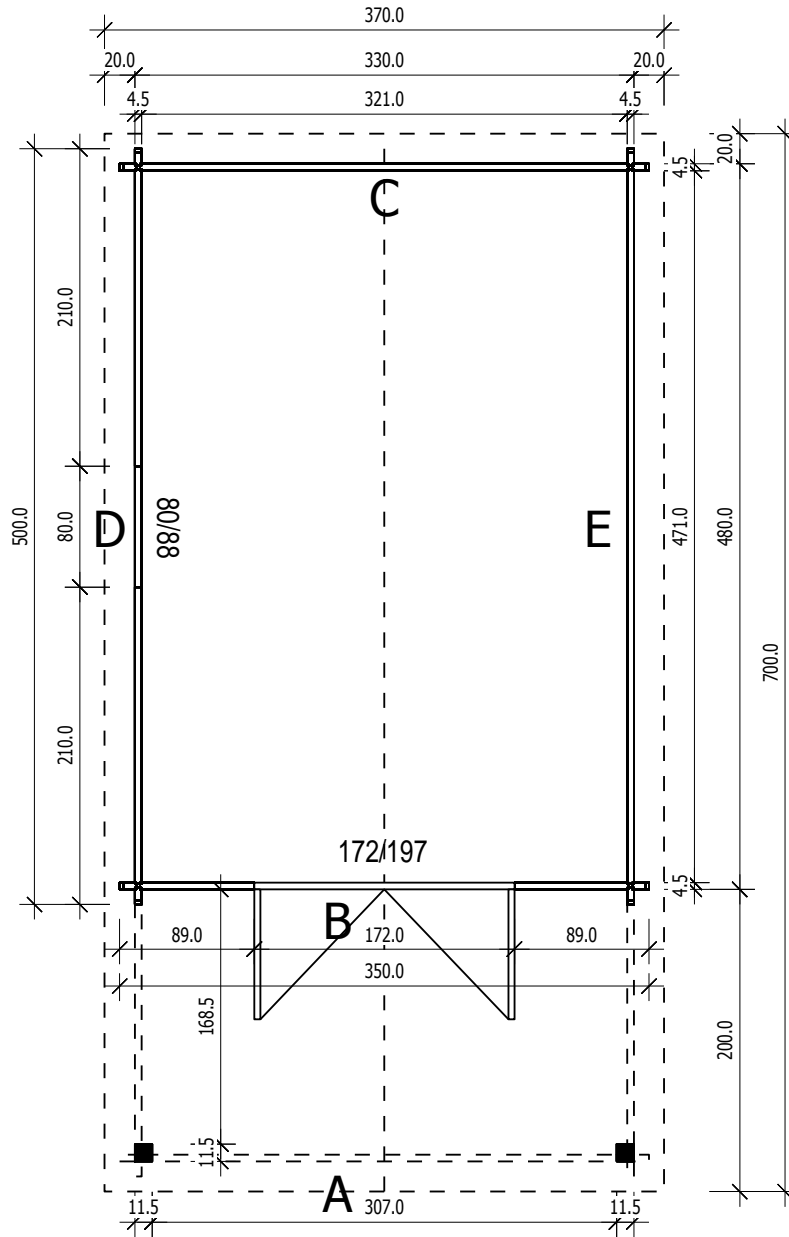
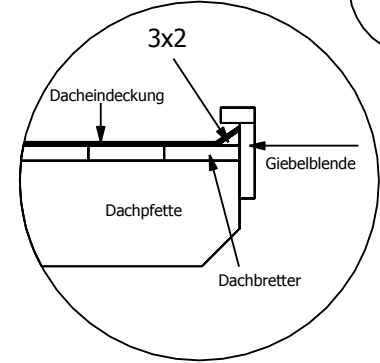


Bemerkung: die Ansicht von Turen, Fenster und anderen Teilen kann abweichen von diesem Bild

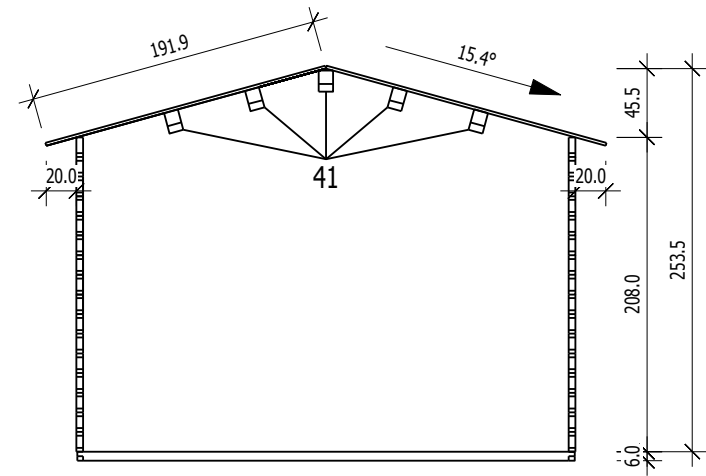
Grundriss

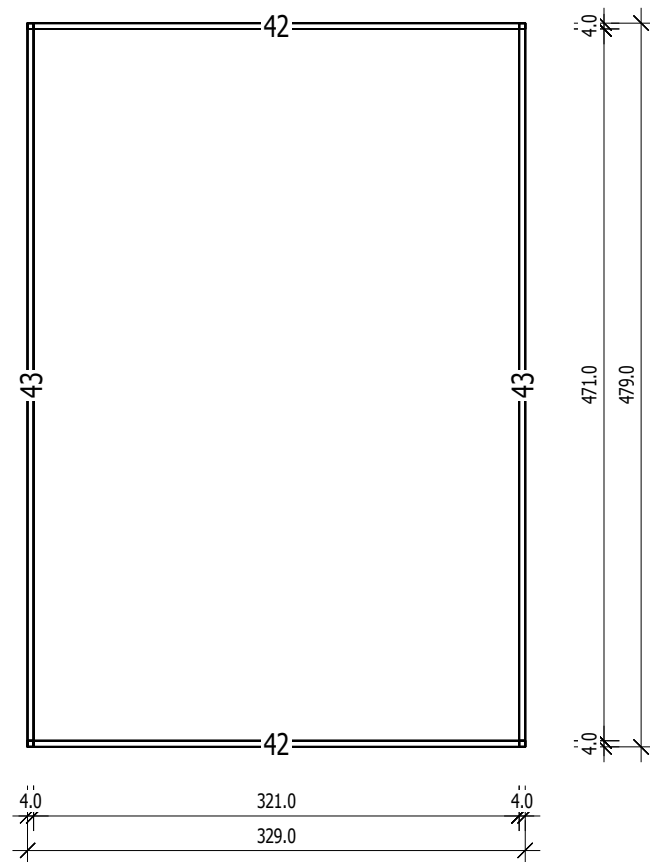


4,5)



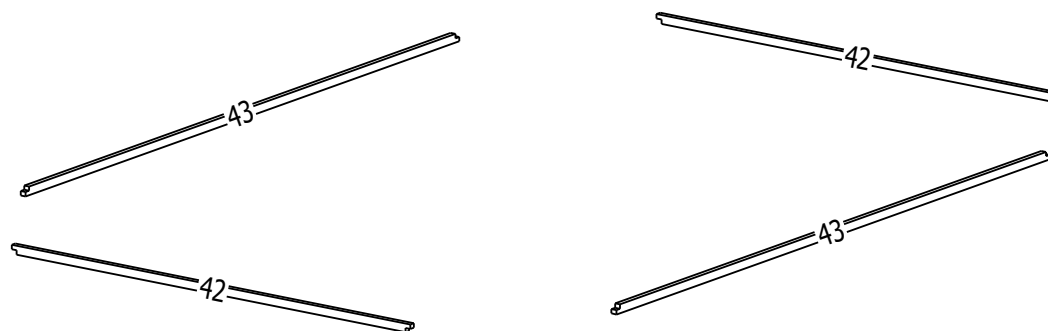
Schnitt





Grundrahmenplan

Nr.	B	H	L	Psc
	[cm]	[cm]	[cm]	
42	4,0	6,0	329,0	2
43	4,0	6,0	479,0	2

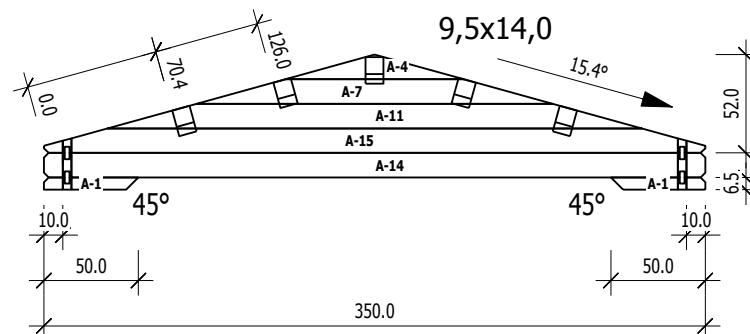


4,5

A

M 1:40

	Nr	H	L	Psc
A	1	6.5	50.0	2
A	4	13.0	94.3	1
A	7	13.0	188.6	1
A	11	13.0	282.9	1
A	14	13.0	350.0	1
A	15	13.0	350.0	1

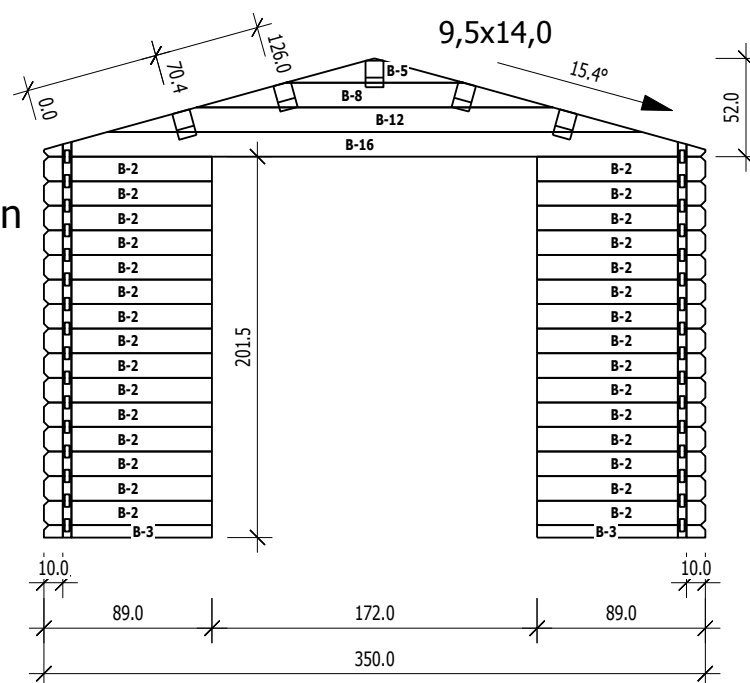


B

M 1:40

Ansicht von Aussen

	Nr	H	L	Psc
B	2	13.0	89.0	30
B	3	6.5	89.0	2
B	5	13.0	94.3	1
B	8	13.0	188.6	1
B	12	13.0	282.9	1
B	16	13.0	350.0	1

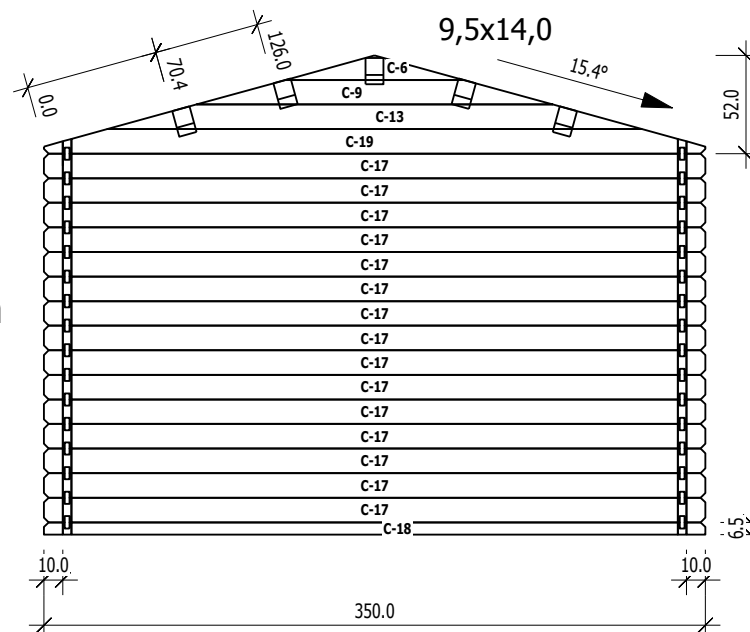


C

M 1:40

Ansicht von Innen

	Nr	H	L	Psc
C	6	13.0	94.3	1
C	9	13.0	188.6	1
C	13	13.0	282.9	1
C	17	13.0	350.0	15
C	18	6.5	350.0	1
C	19	13.0	350.0	1

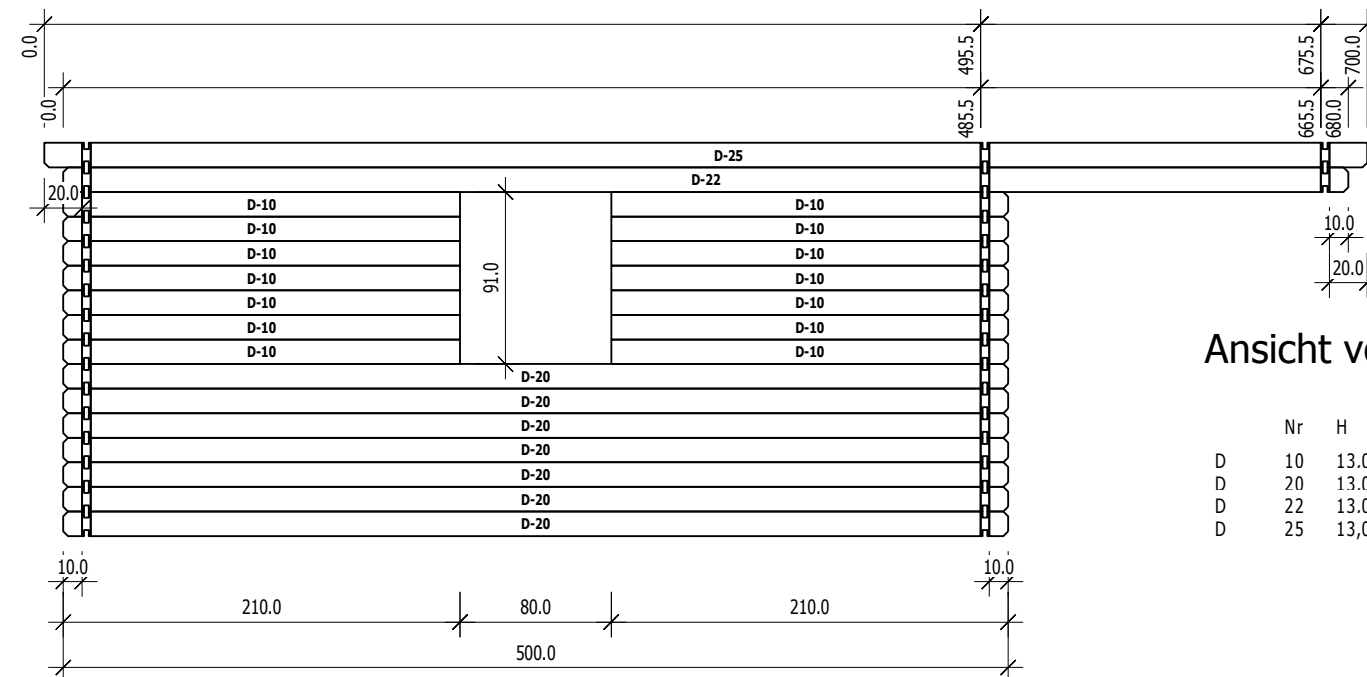


D

M 1:40

Ansicht von Aussen

	Nr	H	L	Psc
D	10	13.0	210.0	14
D	20	13.0	500.0	7
D	22	13.0	680.0	1
D	25	13.0	700.0	1



E

M 1:40

Ansicht von Innen

	Nr	H	L	Psc
E	21	13.0	500.0	14
E	23	13.0	680.0	1
E	26	13.0	700.0	1

