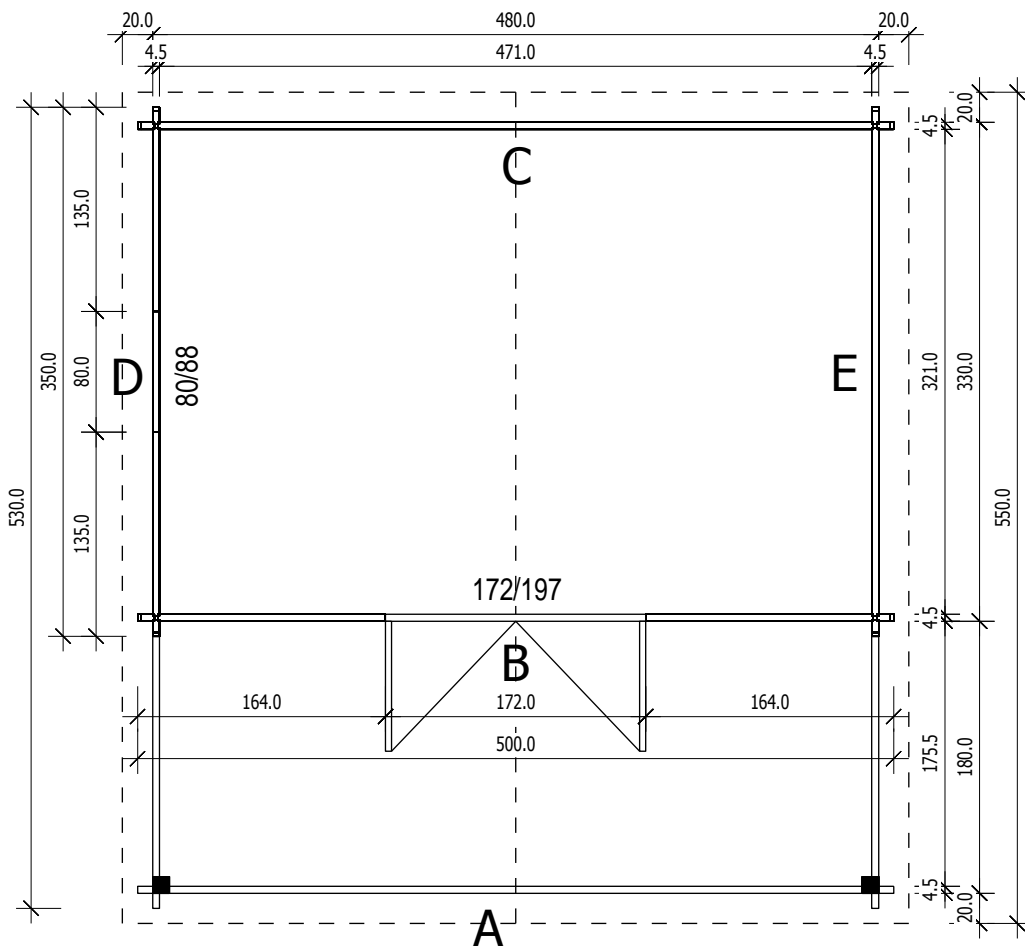
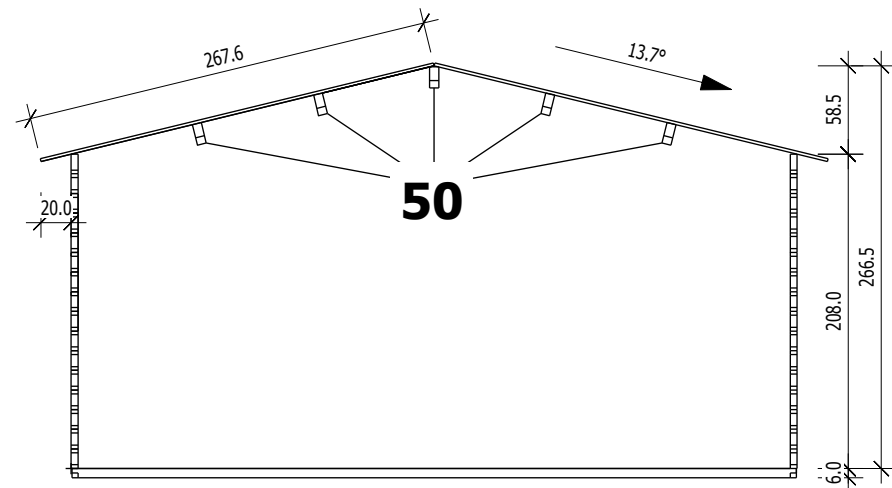
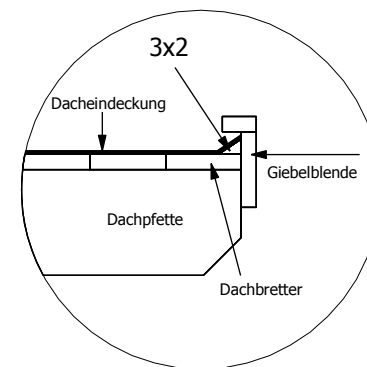




Bemerkung: die Ansicht von Turen, Fenster und anderen Teilen kann abweichen von diesem Bild

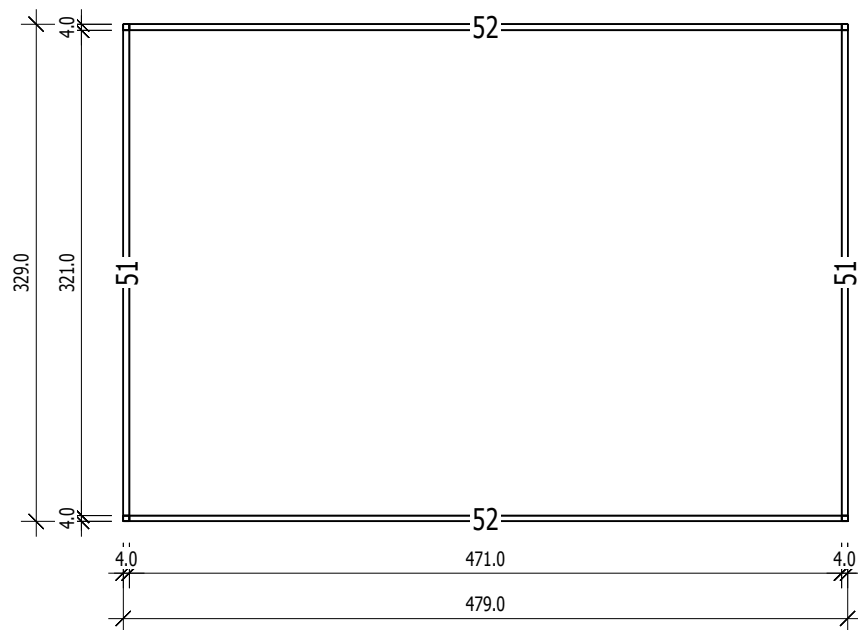


Grundriss



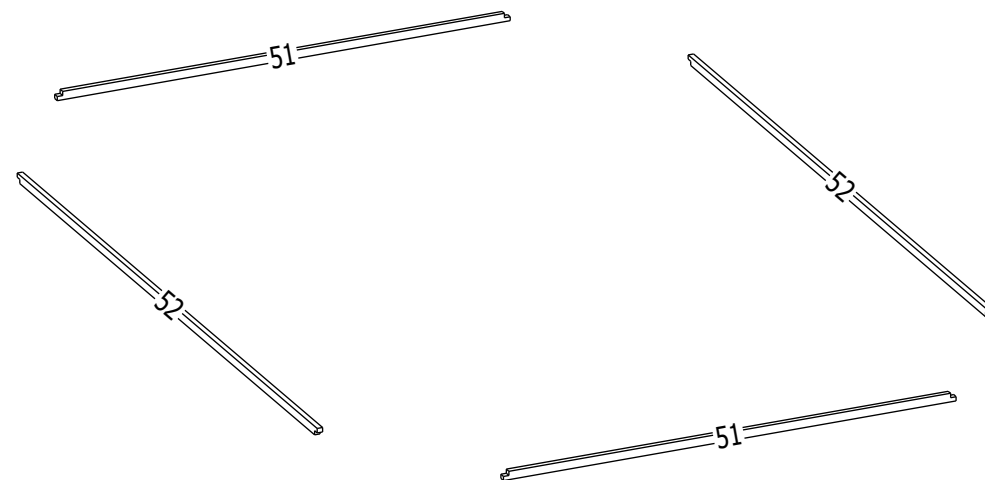
Schnitt

4,5



Grundrahmenplan

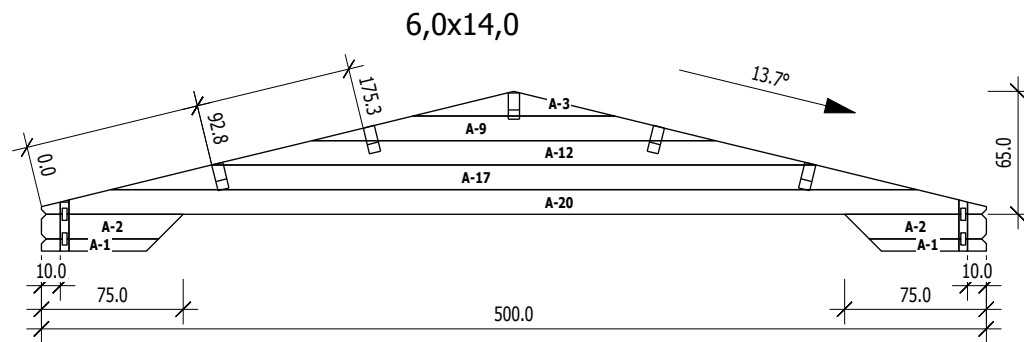
Nr	B	H	L	Psc
	[cm]	[cm]	[cm]	
51	4,0	6,0	329,0	2
52	4,0	6,0	479,0	2



A

M 1:40

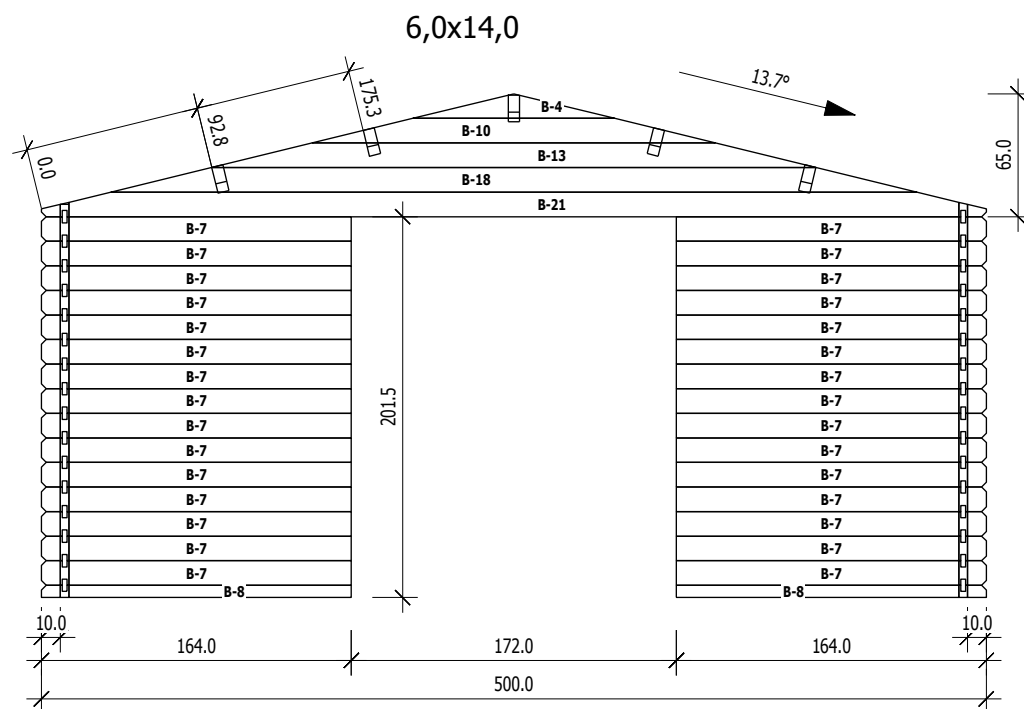
	Nr	H	L	Psc
A	1	6.5	62.0	2
A	2	13.0	75.0	2
A	3	13.0	106.7	1
A	9	13.0	213.3	1
A	12	13.0	320.0	1
A	17	13.0	426.7	1
A	20	13.0	500.0	1



B

M 1:40

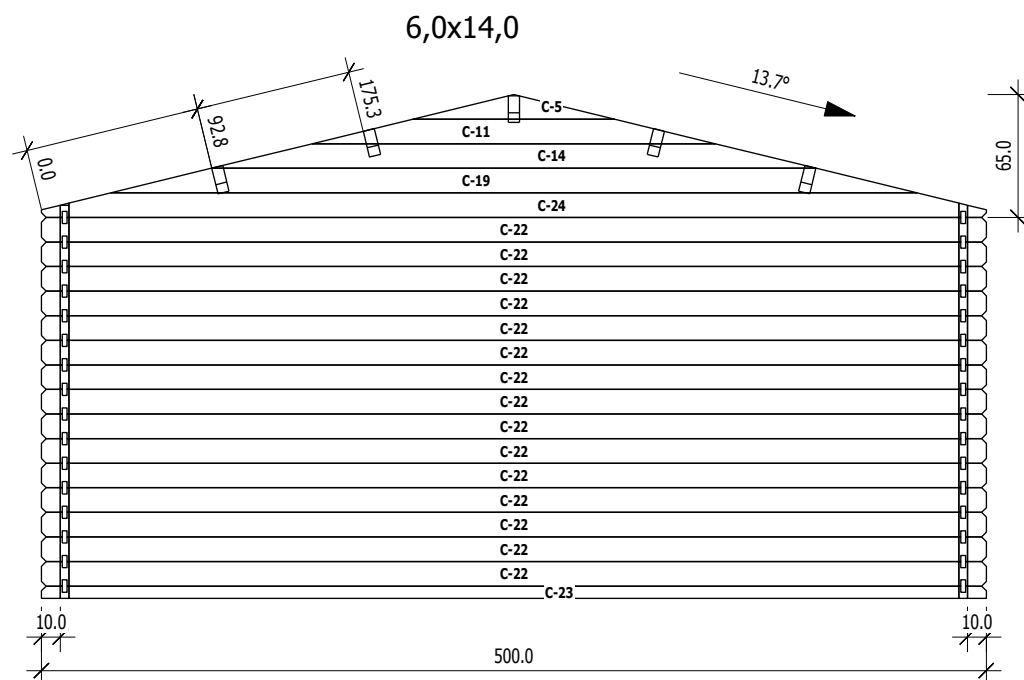
	Nr	H	L	Psc
B	4	13.0	106.7	1
B	7	13.0	164.0	30
B	8	6.5	164.0	2
B	10	13.0	213.3	1
B	13	13.0	320.0	1
B	18	13.0	426.7	1
B	21	13.0	500.0	1



C

M 1:40

	Nr	H	L	Psc
C	5	13.0	106.7	1
C	11	13.0	213.3	1
C	14	13.0	320.0	1
C	19	13.0	426.7	1
C	22	13.0	500.0	15
C	23	6.5	500.0	1
C	24	13.0	500.0	1

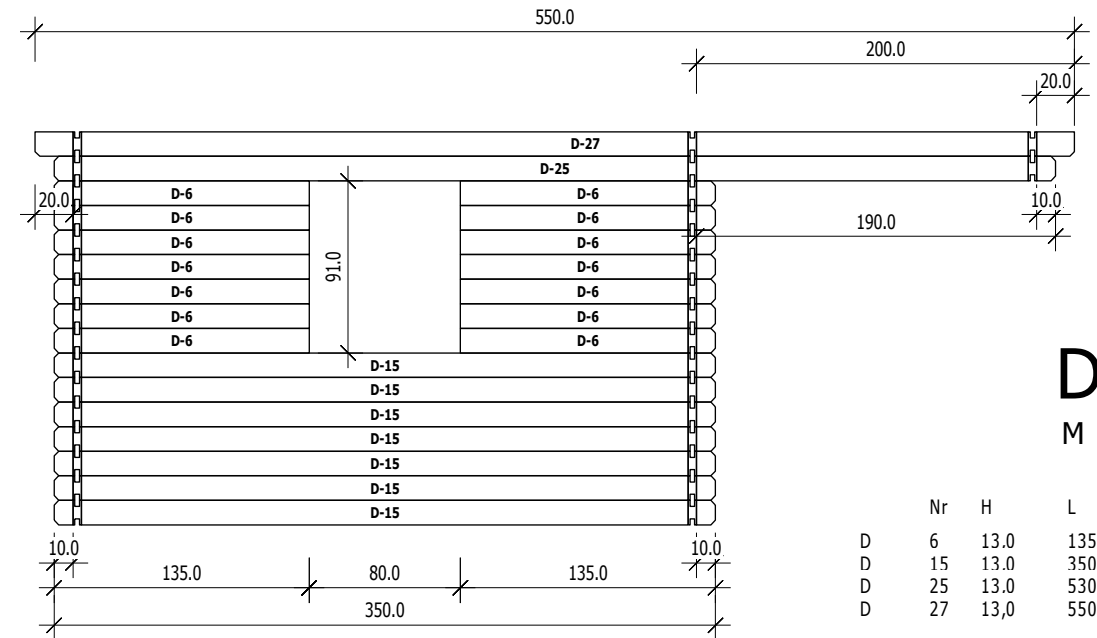


4,5

D

M 1:40

	Nr	H	L	Psc
D	6	13.0	135.0	14
D	15	13.0	350.0	7
D	25	13.0	530.0	1
D	27	13.0	550.0	1



E

M 1:40

	Nr	H	L	Psc
E	16	13.0	350.0	14
E	26	13.0	530.0	1
E	28	13.0	550.0	1

