

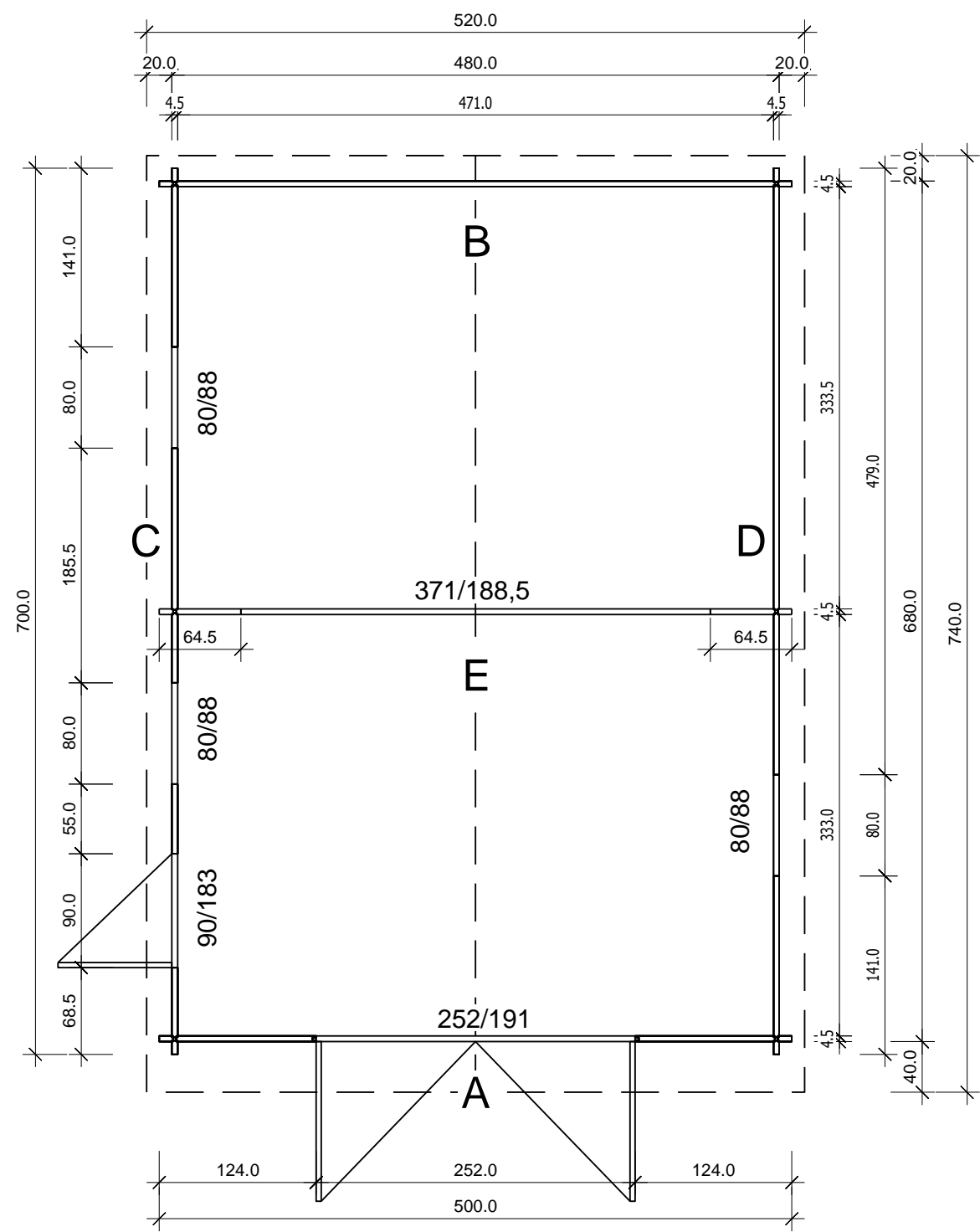
TG-5070



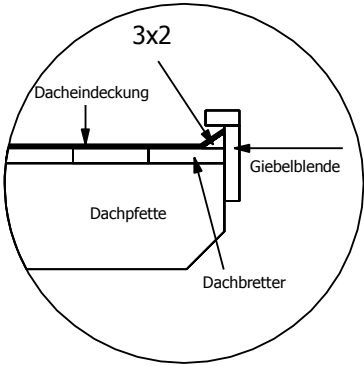
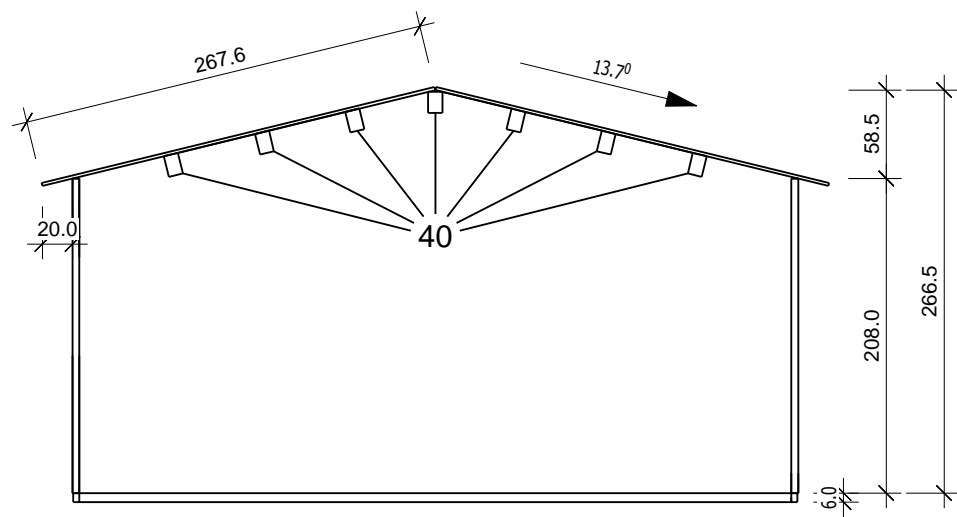
Bemerkung: die Ansicht von Turen, Fenster und anderen Teilen kann abweichen von diesem Bild

TG-5070

Grundriss

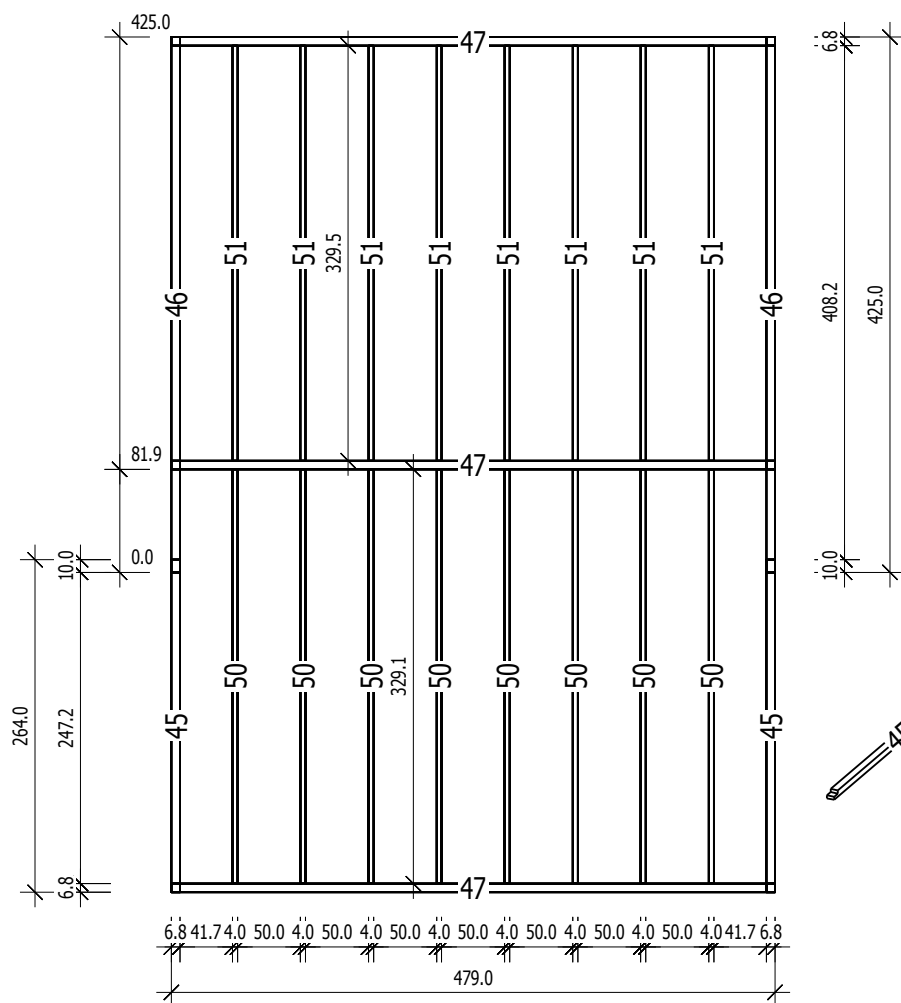


Schnitt

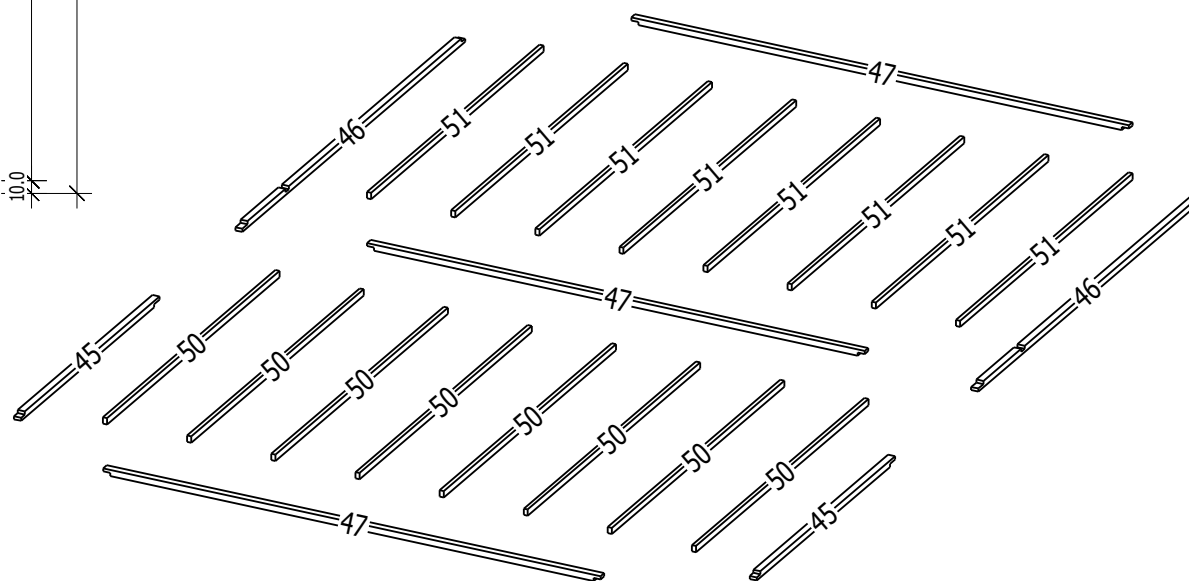


# Grundrahmen

(4,5

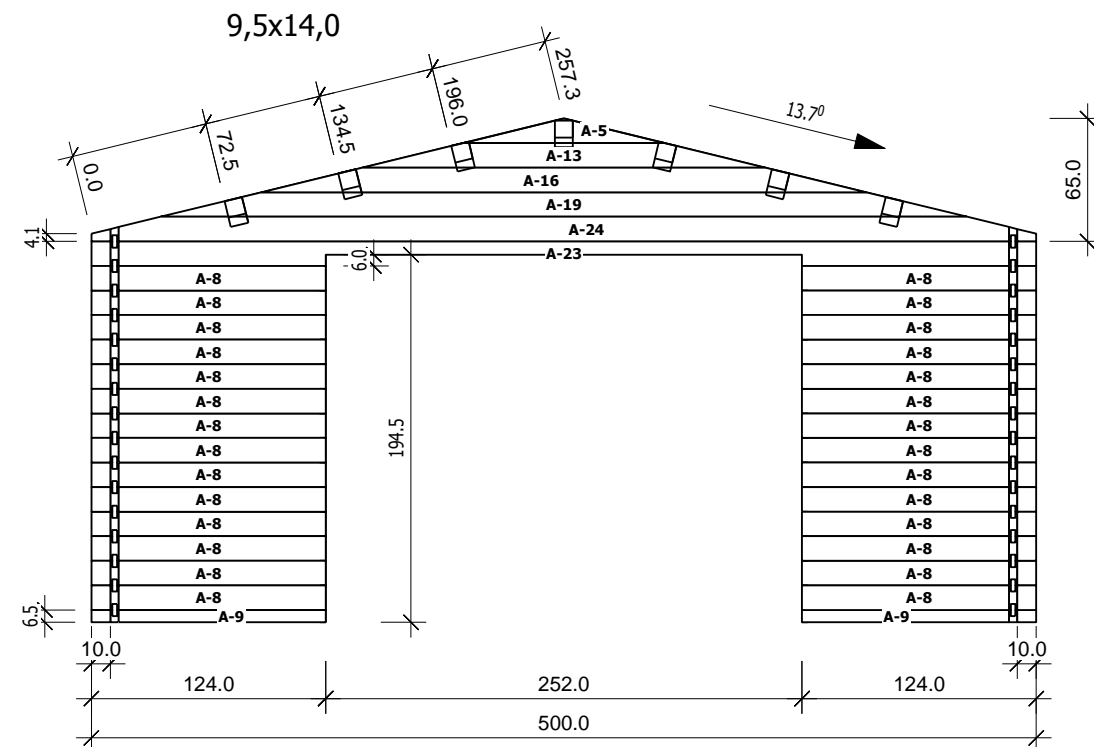


Nr.	B	H	L	Psc
	[cm]	[cm]	[cm]	
=====				
45	6,8	6,0	264,0	2
46	6,8	6,0	425,0	2
47	6,8	6,0	479,0	3
50	4,0	6,0	329,1	8
51	4,0	6,0	329,6	8



A

M 1:40

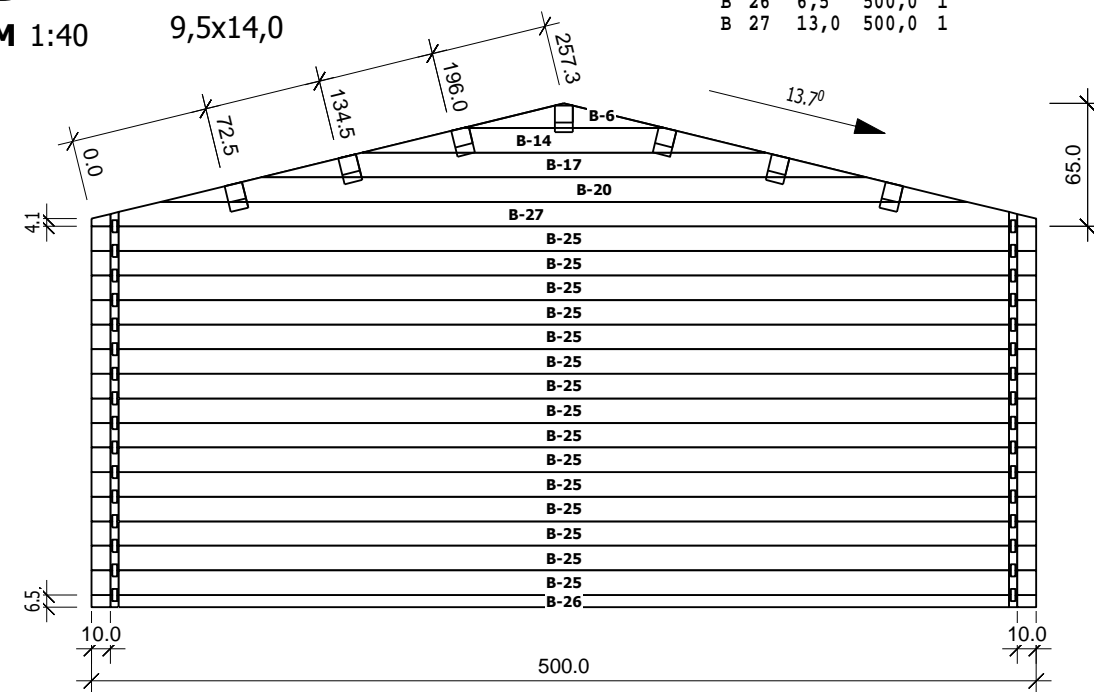


	Nr	H	L	Psc
A	5	13,0	106,7	1
A	8	13,0	124,0	28
A	9	6,5	124,0	2
A	13	13,0	213,3	1
A	16	13,0	320,0	1
A	19	13,0	426,7	1
A	23	13,0	500,0	1
A	24	13,0	500,0	1

	Nr	H	L	Psc
B	6	13,0	106,7	1
B	14	13,0	213,3	1
B	17	13,0	320,0	1
B	20	13,0	426,7	1
B	25	13,0	500,0	15
B	26	6,5	500,0	1
B	27	13,0	500,0	1

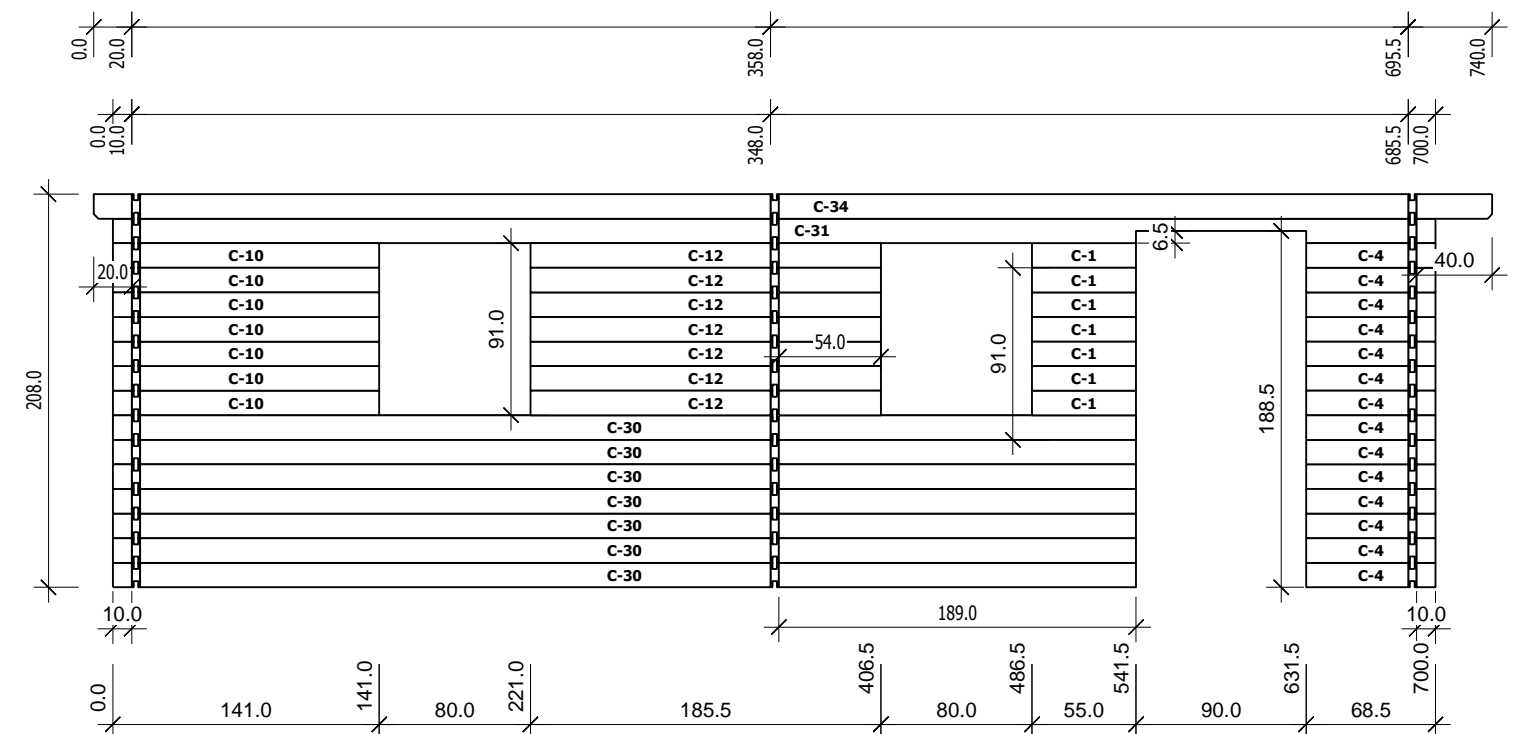
B

M 1:40



C

M 1:40

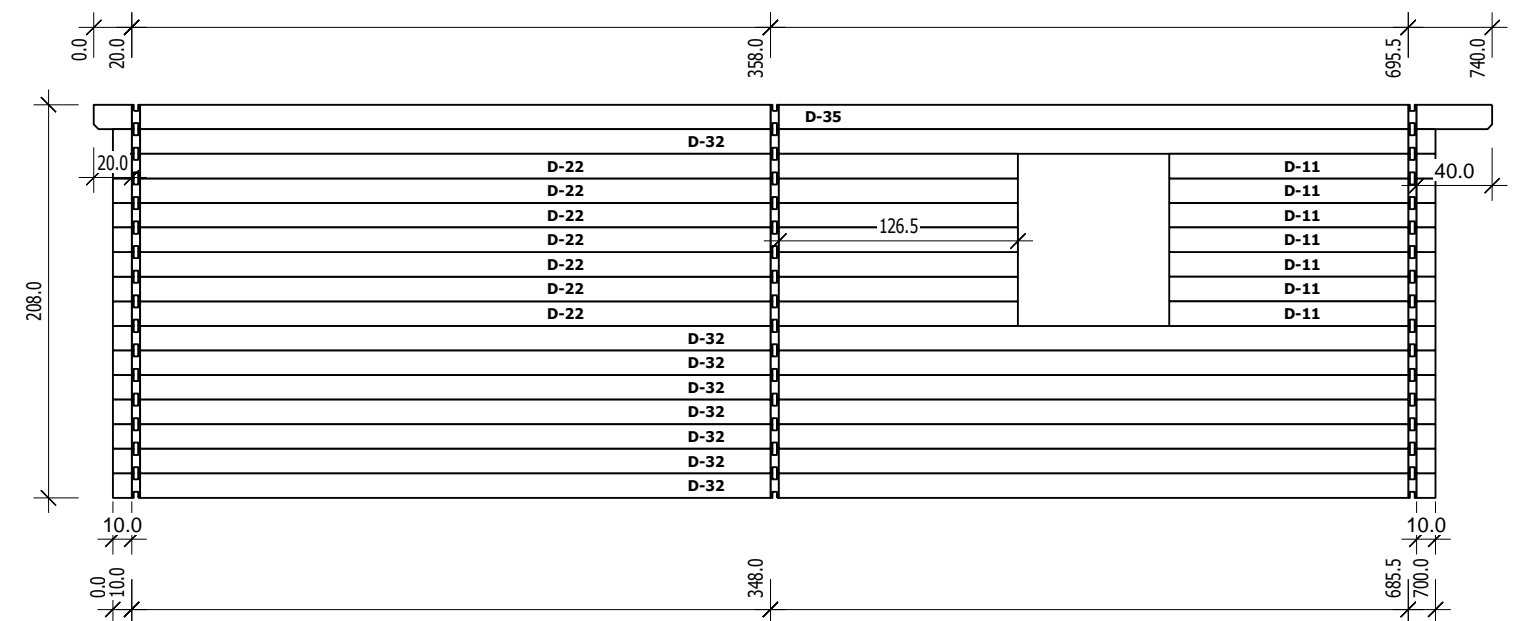


	Nr	H	L	Psc
C	1	13,0	55,0	7
C	4	13,0	68,5	14
C	10	13,0	141,0	7
C	12	13,0	185,5	7
C	30	13,0	541,5	7
C	31	13,0	700,0	1
C	34	13,0	740,0	1

	Nr	H	L	Psc
D	11	13,0	141,0	7
D	22	13,0	479,0	7
D	32	13,0	700,0	8
D	35	13,0	740,0	1

D

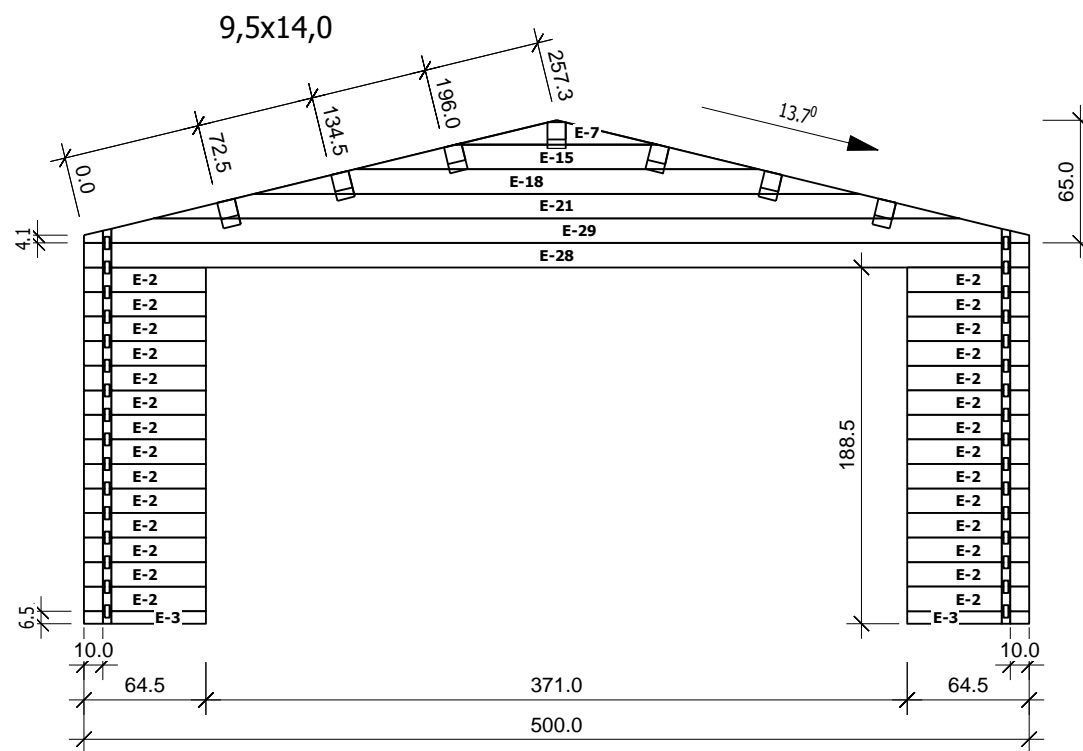
M 1:40



# E

M 1:40

4,5



	Nr	H	L	Psc
E	2	13,0	64,5	28
E	3	6,5	64,5	2
E	7	13,0	106,7	1
E	15	13,0	213,3	1
E	18	13,0	320,0	1
E	21	13,0	426,7	1
E	28	13,0	500,0	1
E	29	13,0	500,0	1

# Hobeldielen

