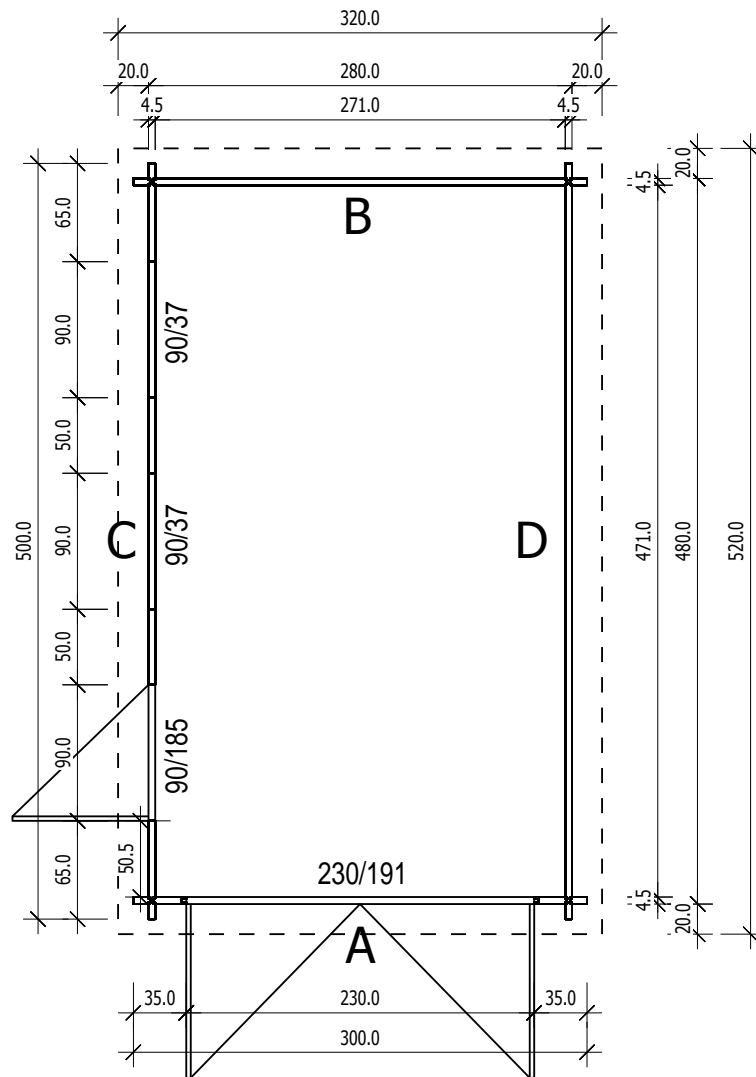
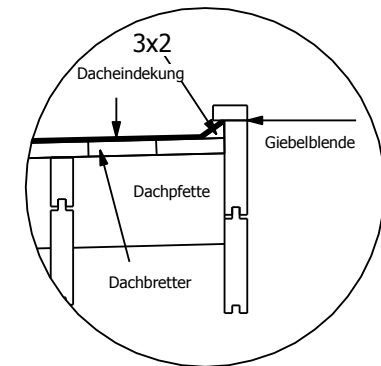
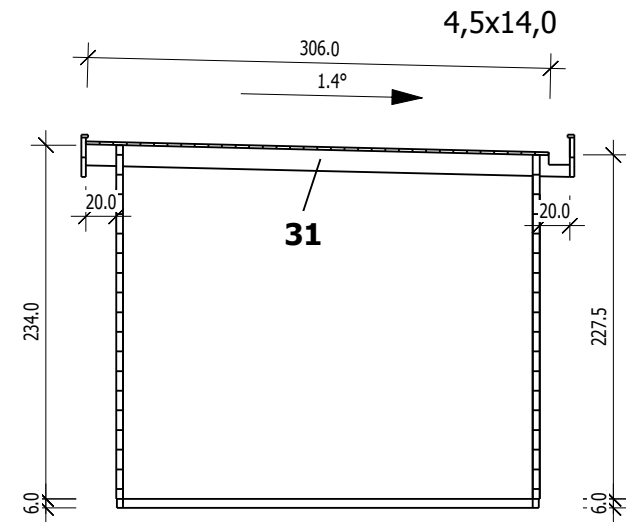


Grundriss

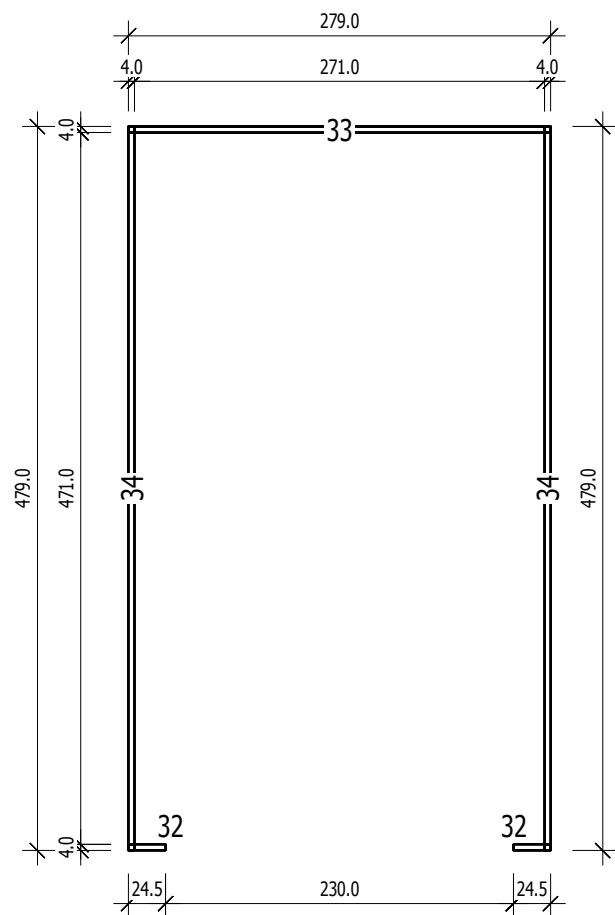


Schnitt



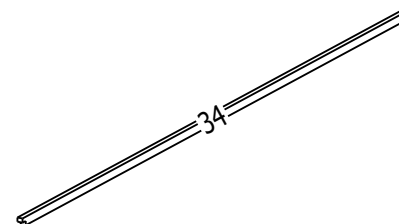
4,5

Grundrahmenplan

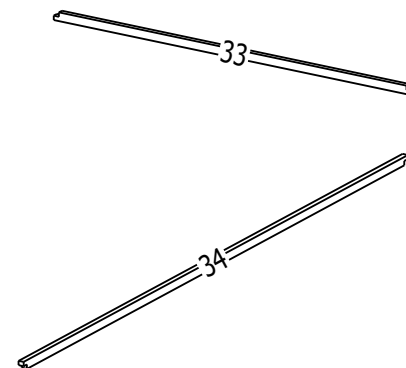


Nr.	B	H	L	Psc
	[cm]	[cm]	[cm]	
32	4.0	6.0	24.5	2
33	4.0	6.0	279.0	1
34	4.0	6.0	479.0	2

32



32

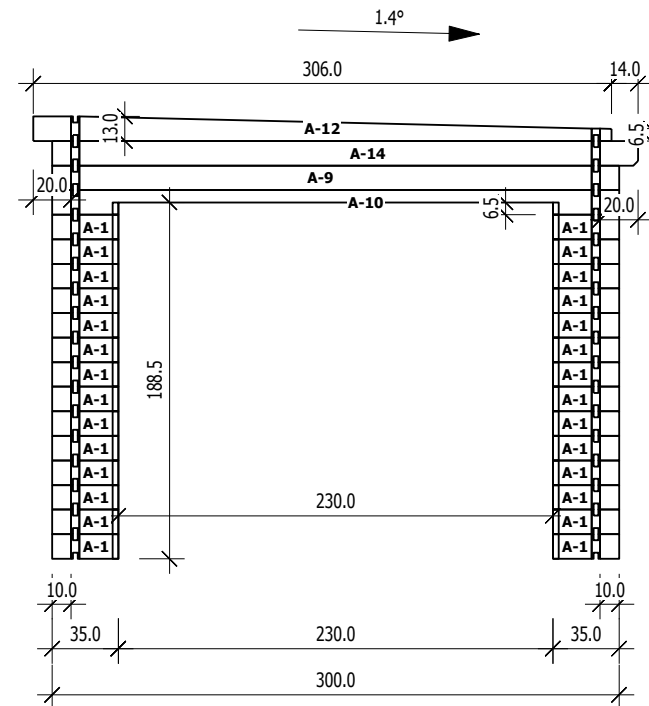


A

M 1:40

Ansicht von Aussen

	Nr	H	L	Psc
A	1	13.0	35.0	28
A	9	13.0	300.0	1
A	10	13.0	300.0	1
A	12	13.0	306.0	1
A	14	13.0	310.0	1

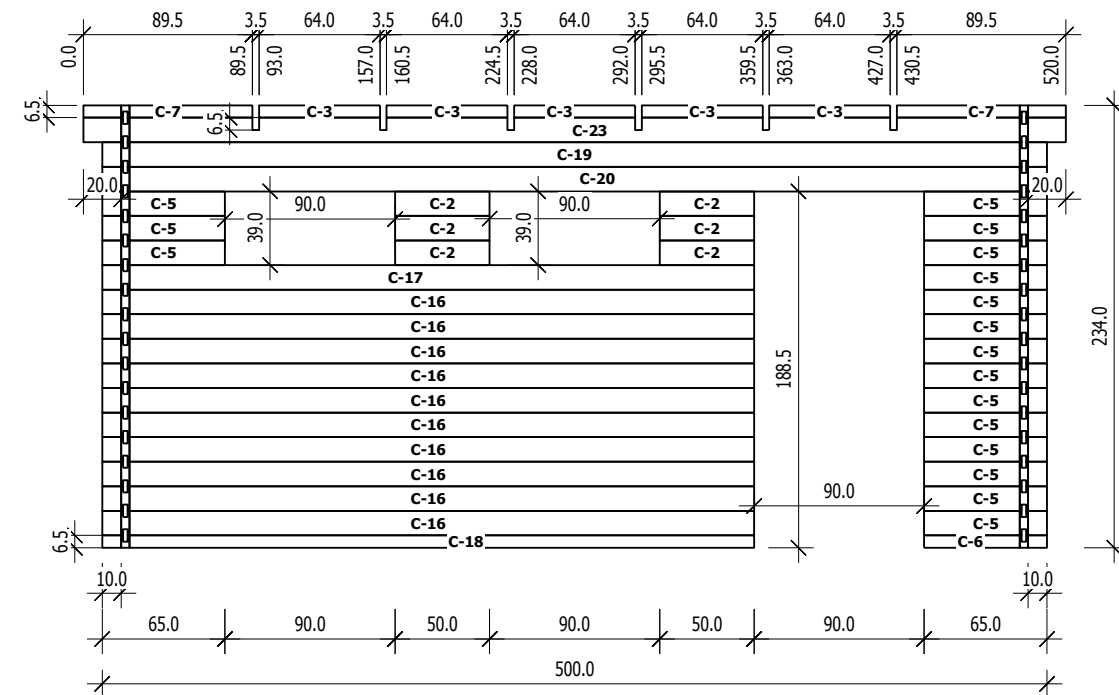


C

M 1:40 4,5x14,0

Ansicht von Aussen

	Nr	H	L	Psc
C	2	13.0	50.0	6
C	3	6.5	64.0	5
C	5	13.0	65.0	17
C	6	6.5	65.0	1
C	7	6.5	89.5	2
C	16	13.0	345.0	10
C	17	13.0	345.0	1
C	18	6.5	345.0	1
C	19	13.0	500.0	1
C	20	13.0	500.0	1
C	23	13.0	520.0	1

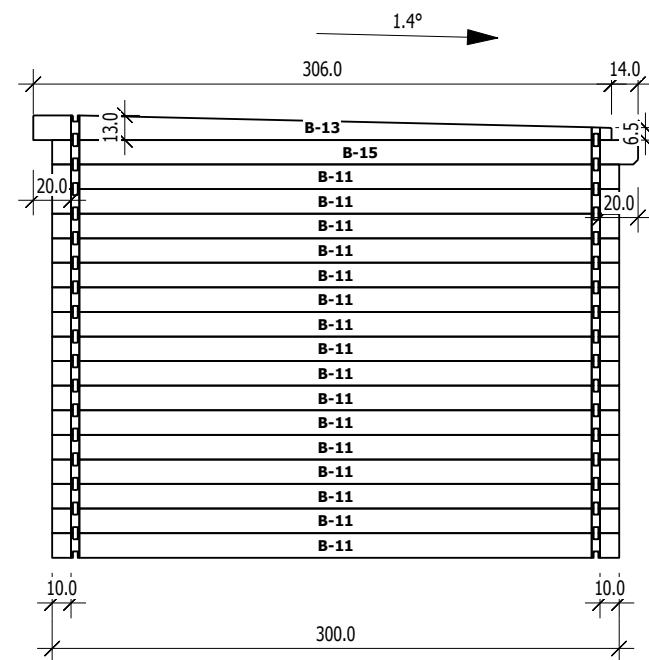


B

M 1:40

Ansicht von Innen

	Nr	H	L	Psc
B	11	13.0	300.0	16
B	13	13.0	306.0	1
B	15	13.0	310.0	1



D

M 1:40 4,5x14,0

Ansicht von Innen

	Nr	H	L	Psc
D	4	13.0	64.0	5
D	8	13.0	89.5	2
D	21	13.0	500.0	16
D	22	6.5	500.0	1

