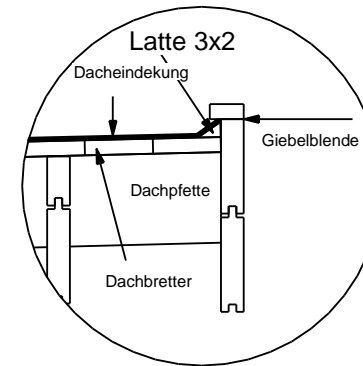
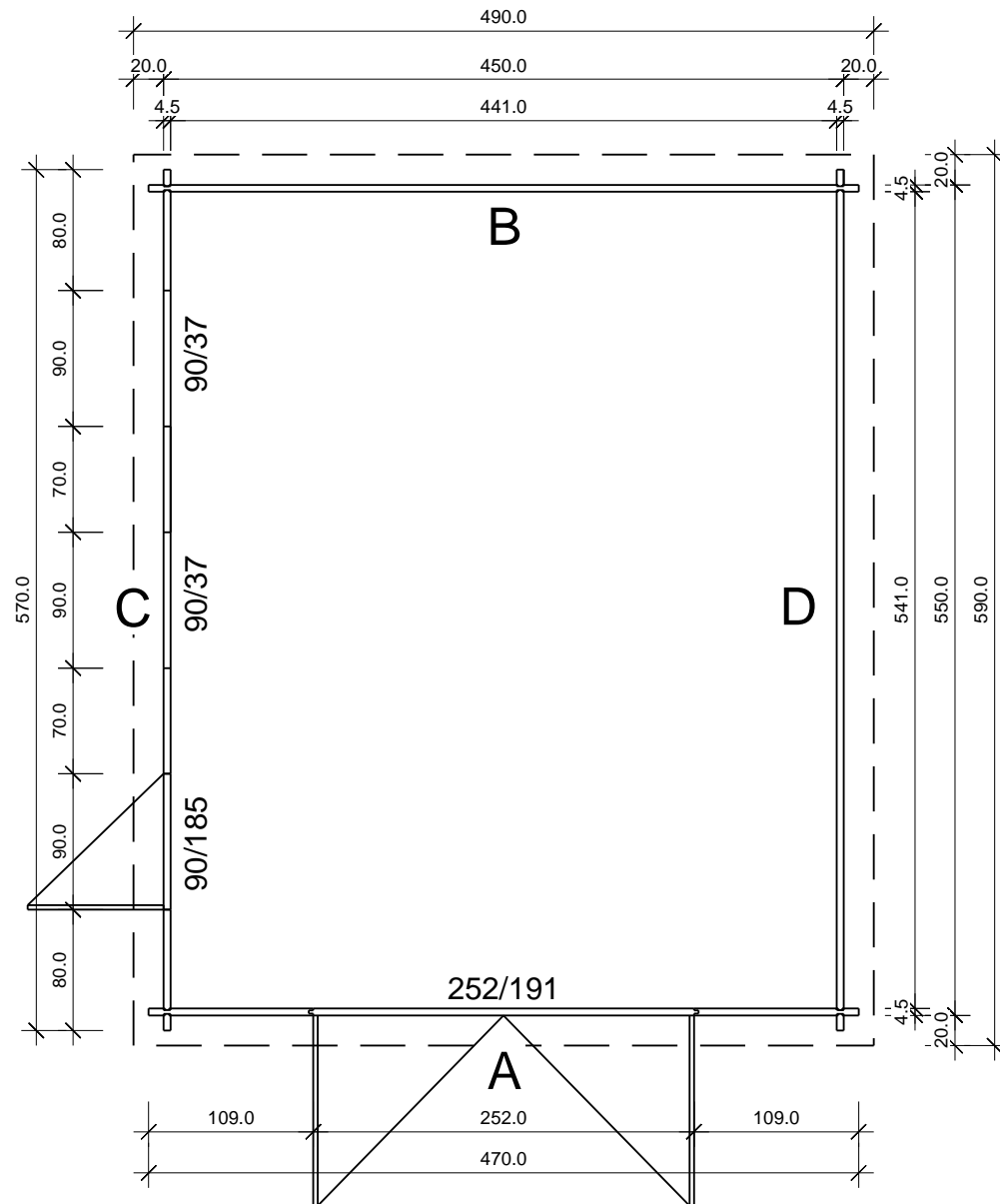


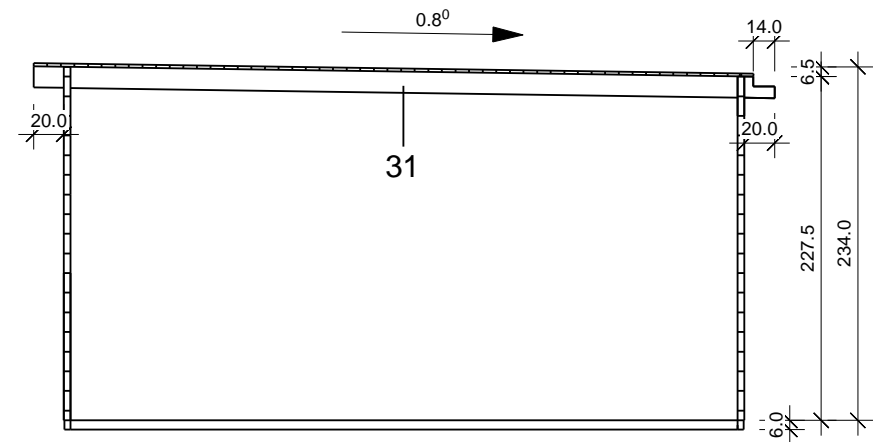
Bemerkung: die Ansicht von Turen, Fenster und anderen Teilen kann abweichen von diesem Bild

# Grundriss

4,5)



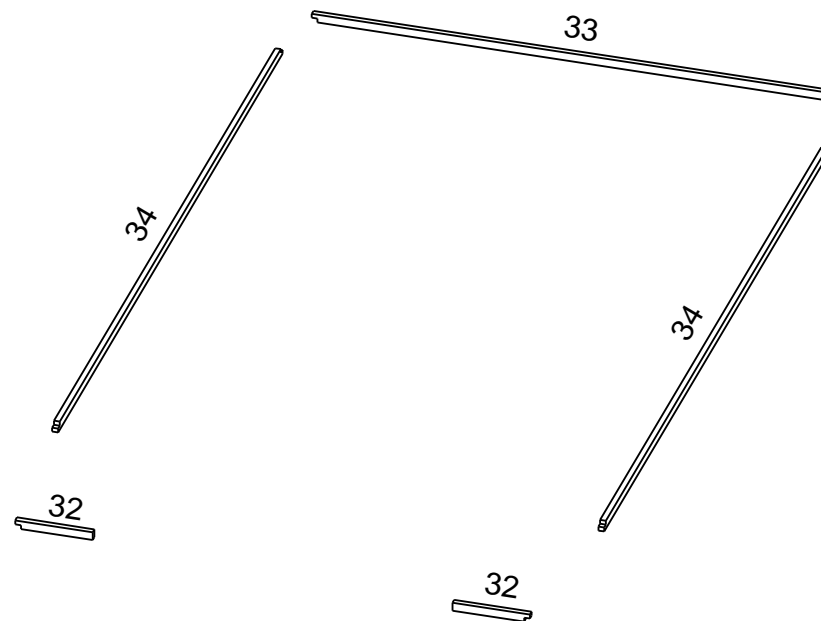
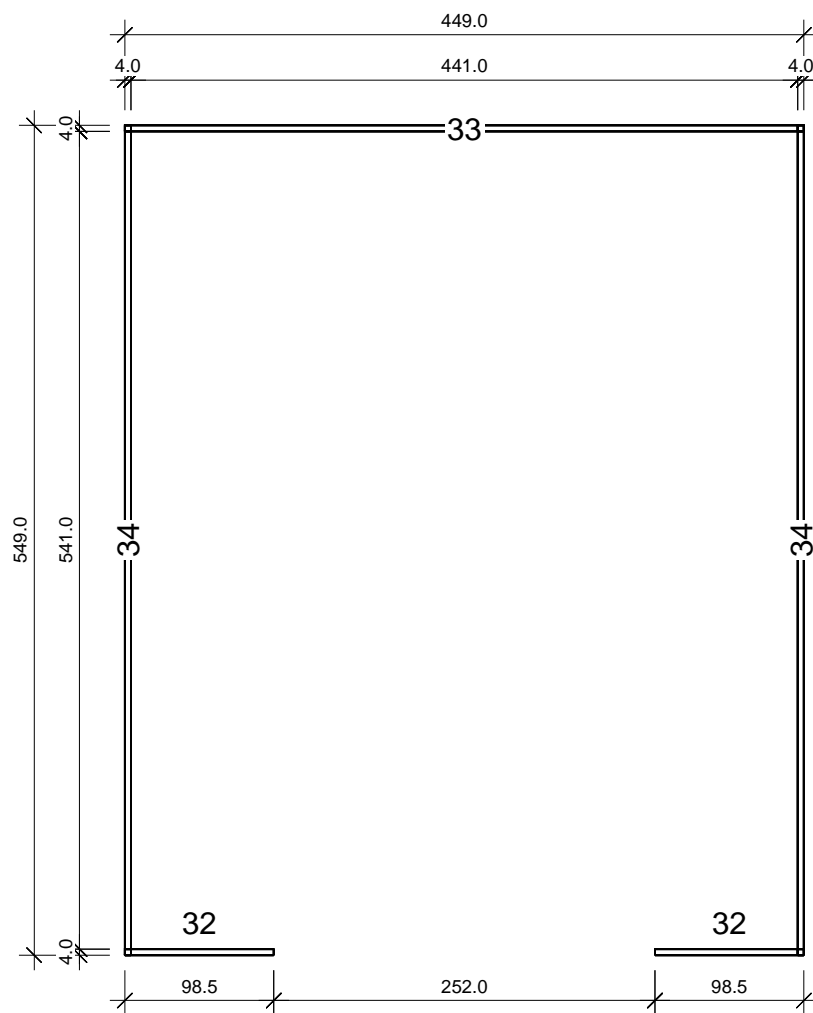
# Schnitt



Projektas Uzsakymo Nr.	Brezinys Planas, pjuvis	Mastelis 1 : 50
<div>NL-170378</div>		Data 2017.05.25
		Projektavo P. Drevinskas

# Grundrahmen

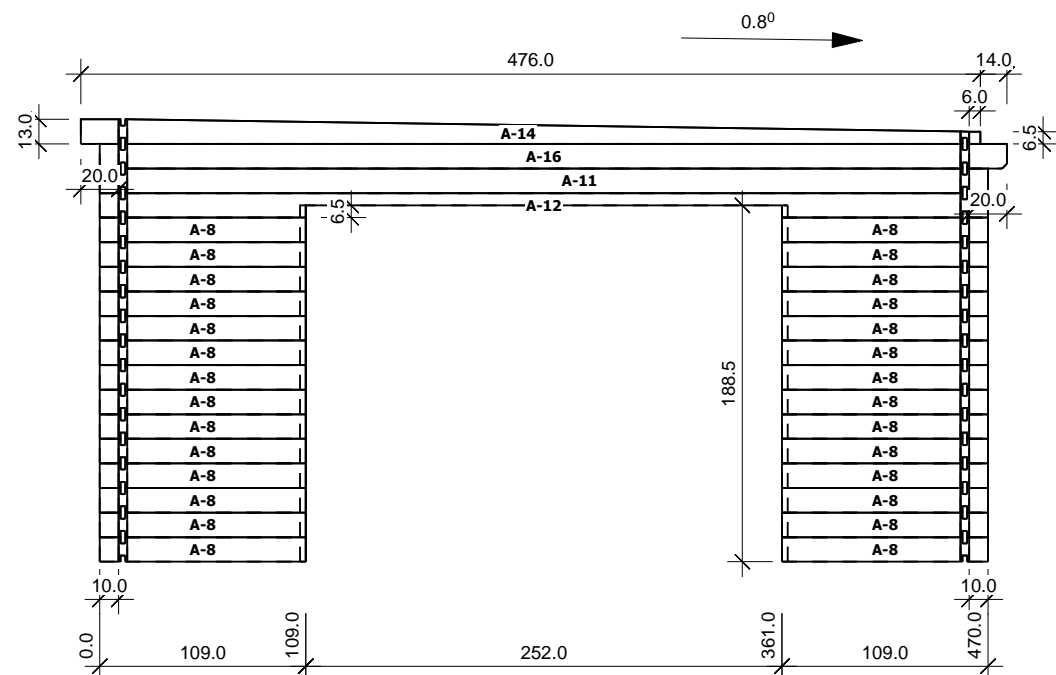
4,5



Nr.	B [cm]	H [cm]	L [cm]	Psc
32	4,0	6,0	98,5	2
33	4,0	6,0	449,0	1
34	4,0	6,0	549,0	2

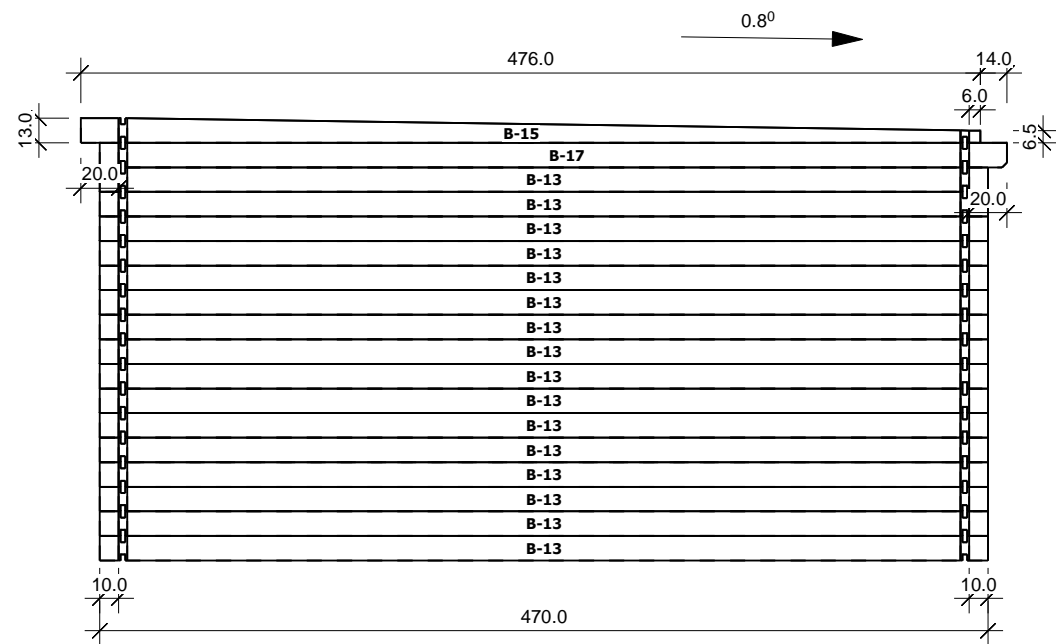
Projektas	Brezinys	Mastelis
Uzsakymo Nr.	Pagrindas	1 : 50
<b>NL-170378</b>		Data
		2017.05.25
		Projektavo
		P. Drevinskas

A  
M 1:40



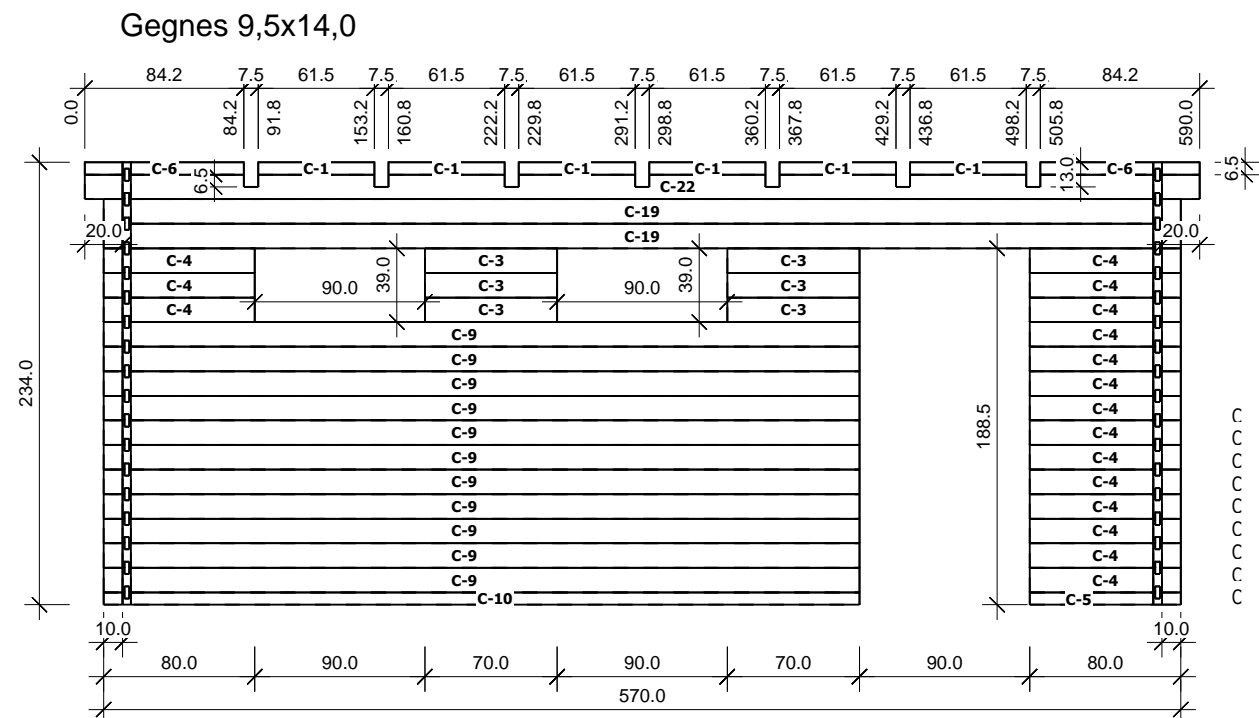
B  
M 1:40

Nr	H	L	Psc
A 8	13.0	109.0	28
A 11	13.0	470.0	1
A 12	13.0	470.0	1
A 14	13.0	476.0	1
A 16	13,0	480,0	1

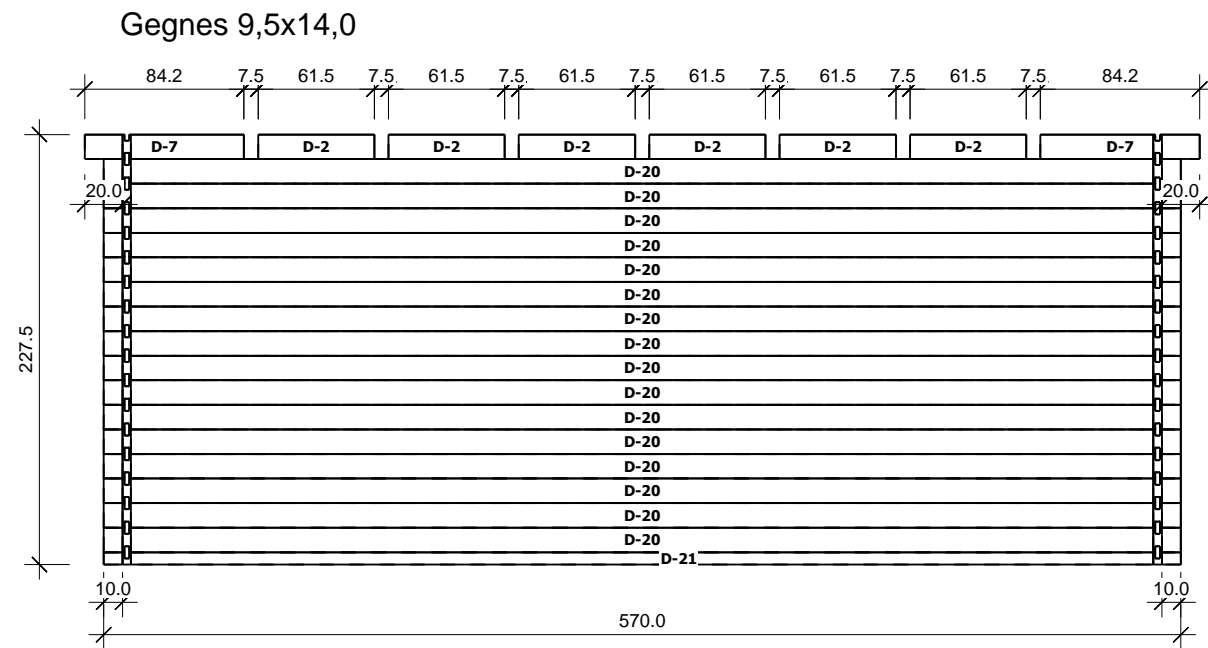


Nr	H	L	Psc
B 13	13.0	470.0	16
B 15	13.0	476.0	1
B 17	13,0	480,0	1

C  
M 1:40



D  
M 1:40



Nr	H	L	Psc
C 1	6.5	61.5	6
C 3	13.0	70.0	6
C 4	13.0	80.0	17
C 5	6.5	80.0	1
C 6	6.5	84.3	2
C 9	13.0	400.0	11
C 10	6.5	400.0	1
C 19	13.0	570.0	2
C 22	13,0	590,0	1

Nr	H	L	Psc
D 2	13.0	61.5	6
D 7	13.0	84.3	2
D 20	13.0	570.0	16
D 21	6,5	570,0	1

4,5

Atliko:	P. Drevinskas	Data 2017.05.25	Projekto. Nr.: <b>NL-170378</b>	Namelio modelis:
			Grupe(siena): <b>A,B,C,D</b> Sienos storis: 4.5cm	MTG-4757 450x550cm 45mm