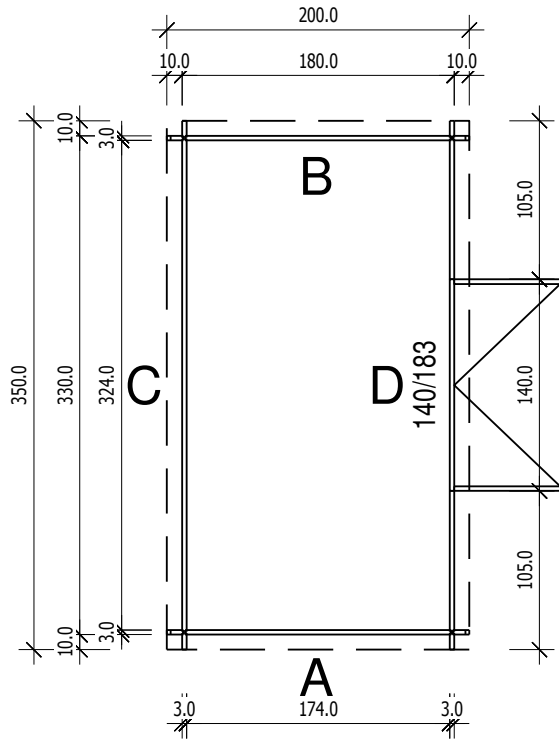
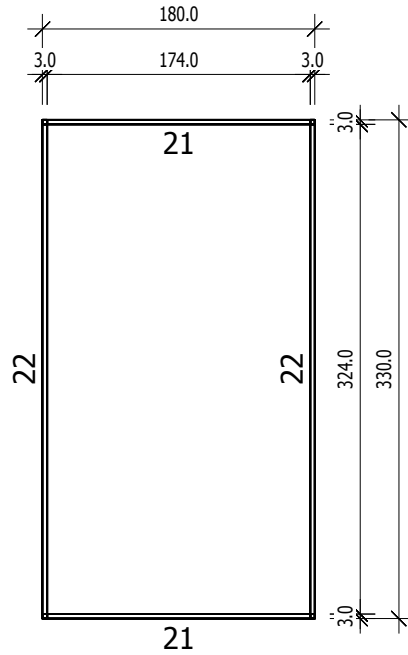


Bemerkung: die Ansicht von Turen, Fenster und anderen Teilen kann abweichen von diesem Bild

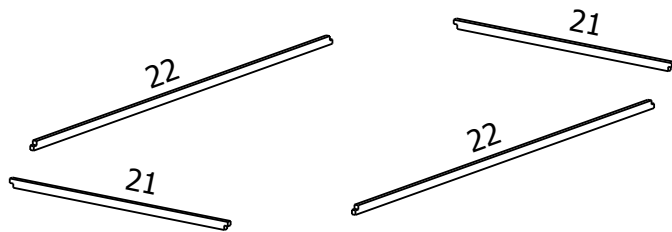
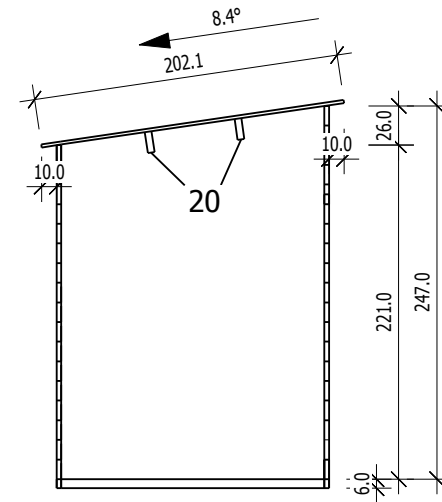
Grundriss



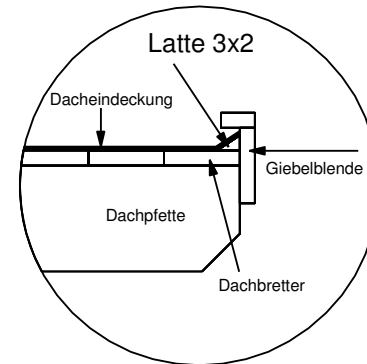
Grundrahmenplan



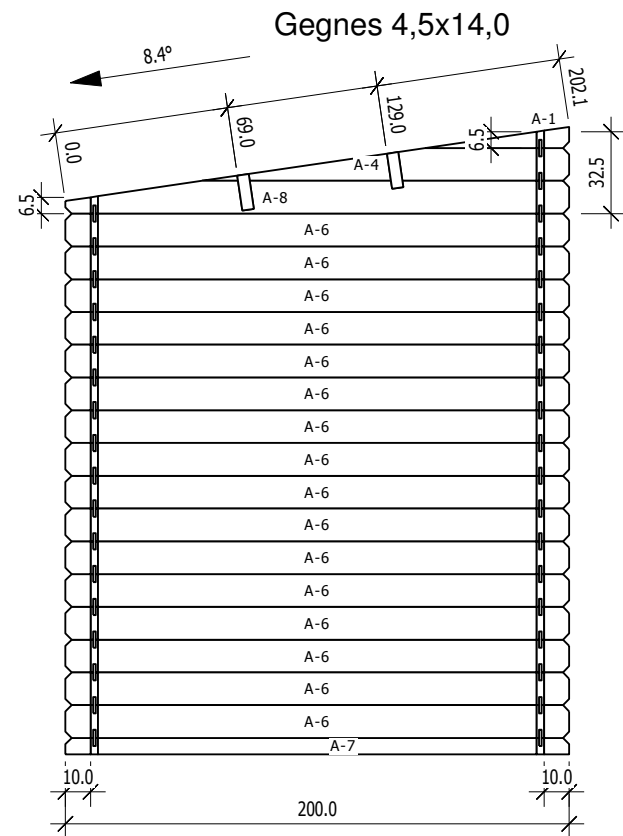
Schnitt



Nr.	B	H	L	Psc
	[cm]	[cm]	[cm]	
21	3,0	6,0	180,0	2
22	3,0	6,0	330,0	2

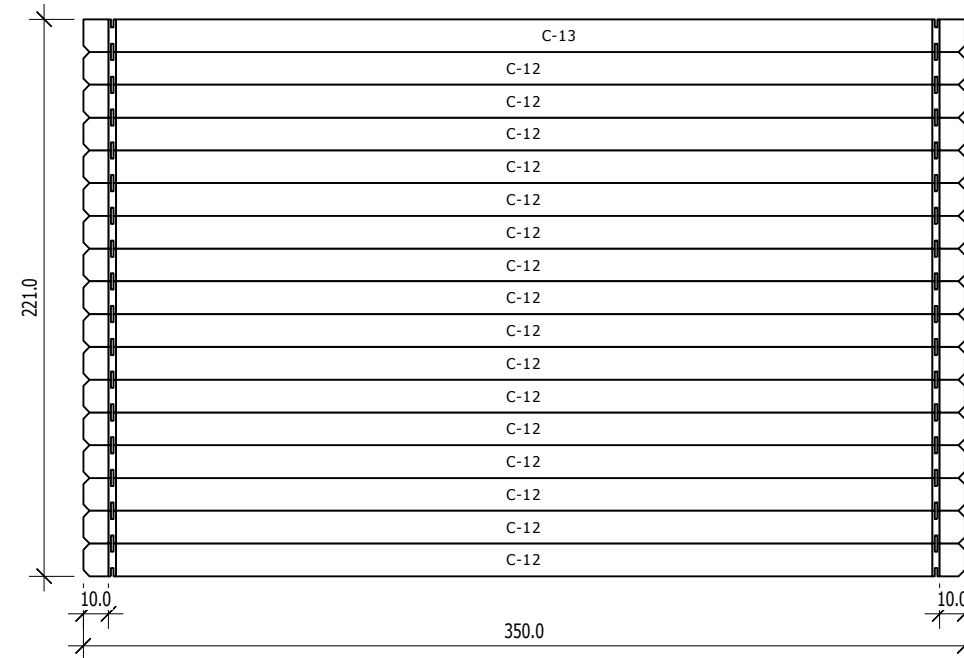


A
M 1:30



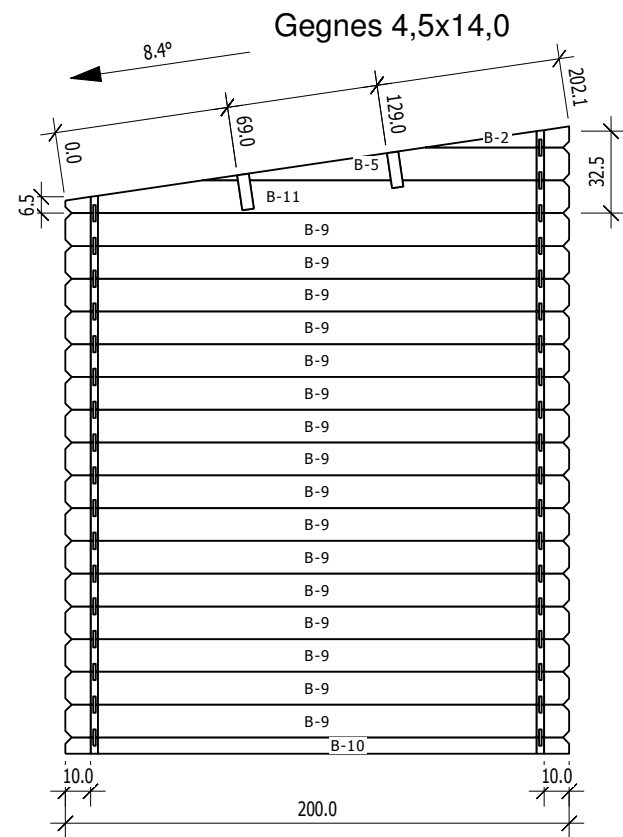
Nr	H	L	Psc
A 1	8,4	57,3	1
A 4	13,0	145,8	1
A 6	13,0	200,0	16
A 7	6,5	200,0	1
A 8	13,0	200,0	1

C
M 1:30



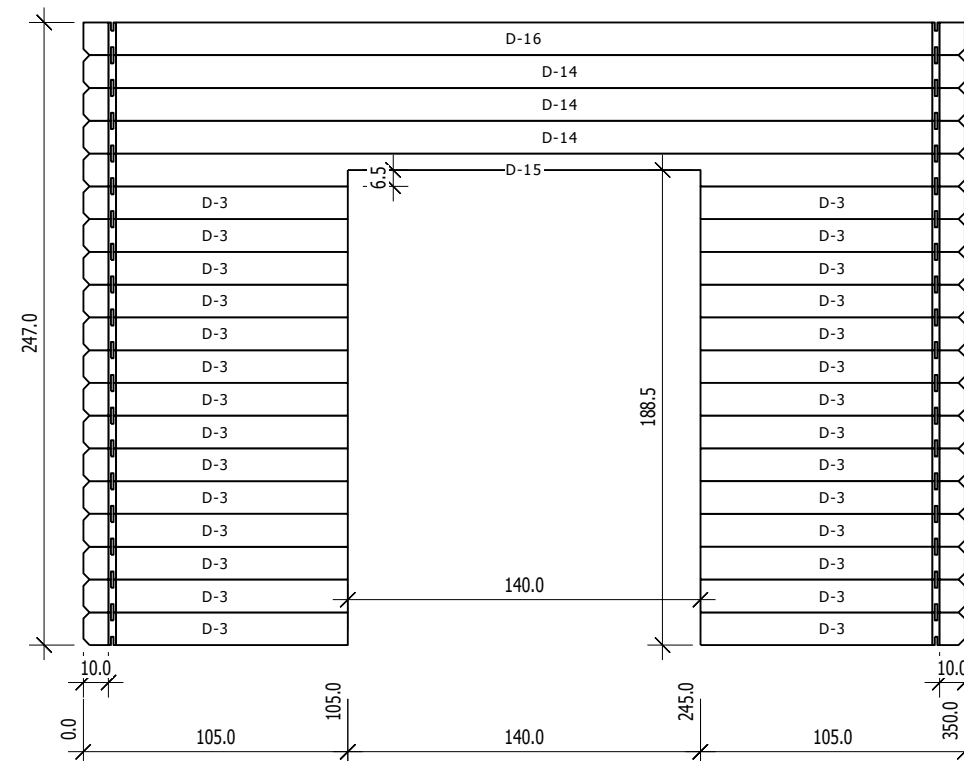
Nr	H	L	Psc
C 12	13,0	350,0	16
C 13	13,0	350,0	1

B
M 1:30



Nr	H	L	Psc
B 2	8,4	57,3	1
B 5	13,0	145,8	1
B 9	13,0	200,0	16
B 10	6,5	200,0	1
B 11	13,0	200,0	1

D
M 1:30



Nr	H	L	Psc
D 3	13,0	105,0	28
D 14	13,0	350,0	3
D 15	13,0	350,0	1
D 16	13,0	350,0	1