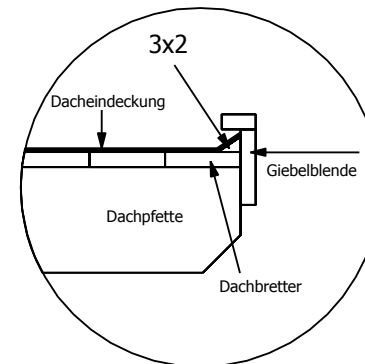
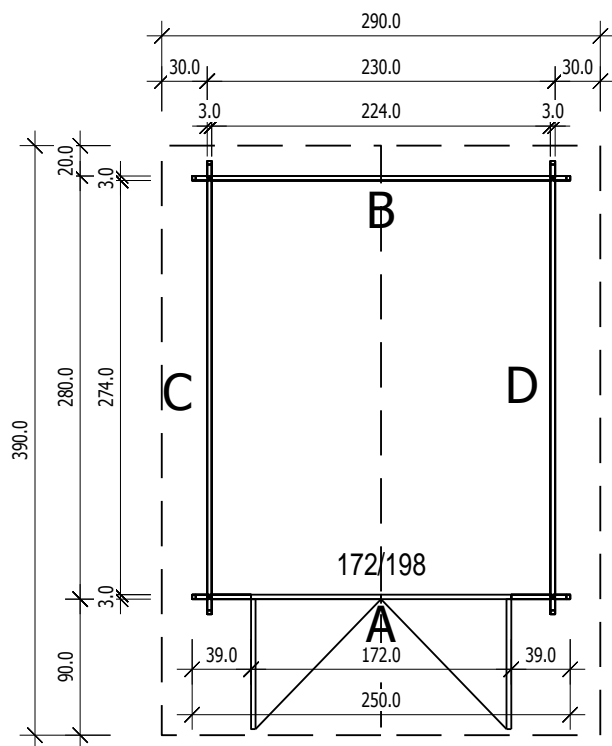


Bemerkung: die Ansicht von Turen, Fenster und anderen Teilen kann abweichen von diesem Bild

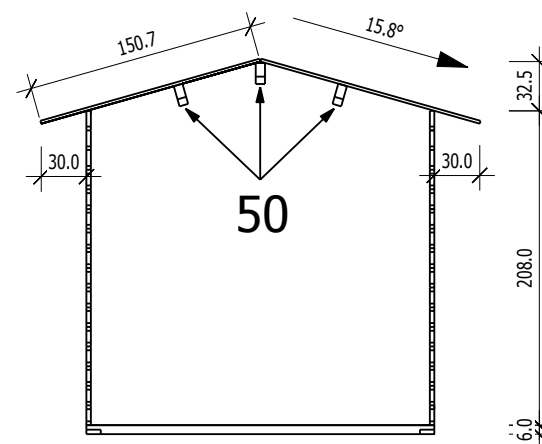
3,0



## Grundriss

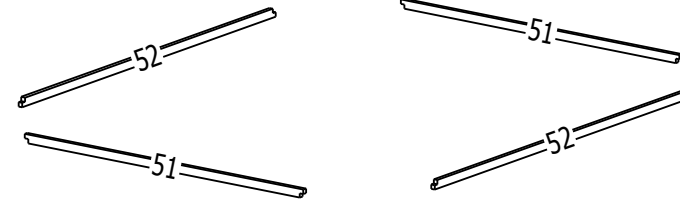
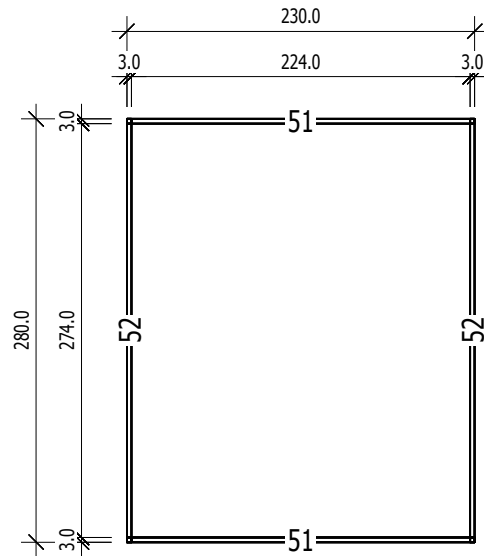


## Schnitt



# Grundrahmenplan

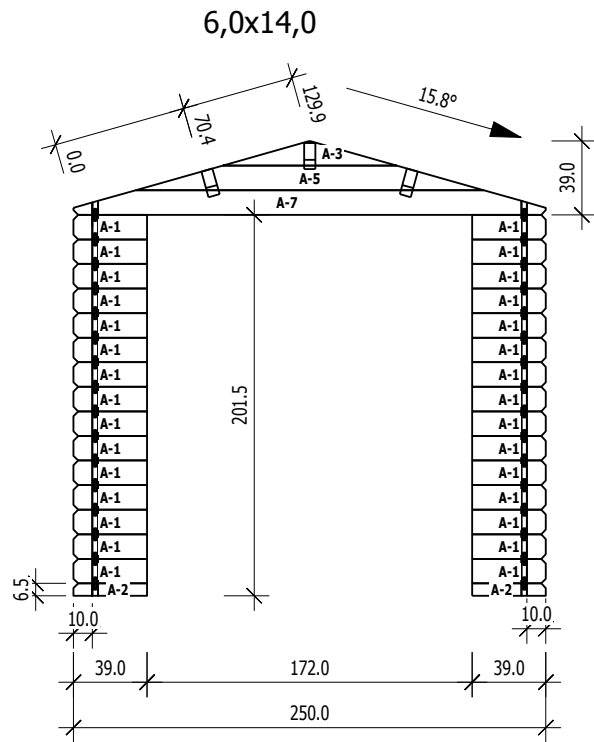
3,0



Nr.	B	H	L	Psc
	[cm]	[cm]	[cm]	
51	3,0	6,0	230,0	2
52	3,0	6,0	280,0	2

A

M 1:40

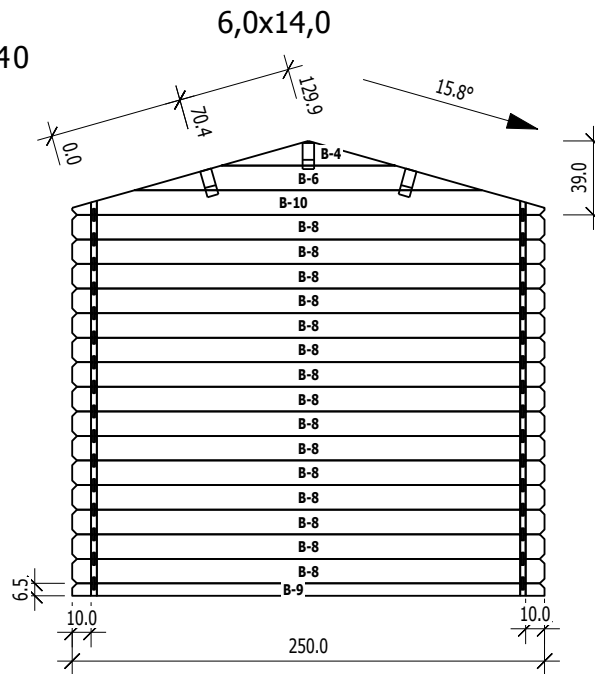


Ansicht von Aussen

	Nr	H	L	Psc
A	1	13,0	39,0	30
A	2	6,5	39,0	2
A	3	13,0	92,0	1
A	5	13,0	184,0	1
A	7	13,0	250,0	1

B

M 1:40



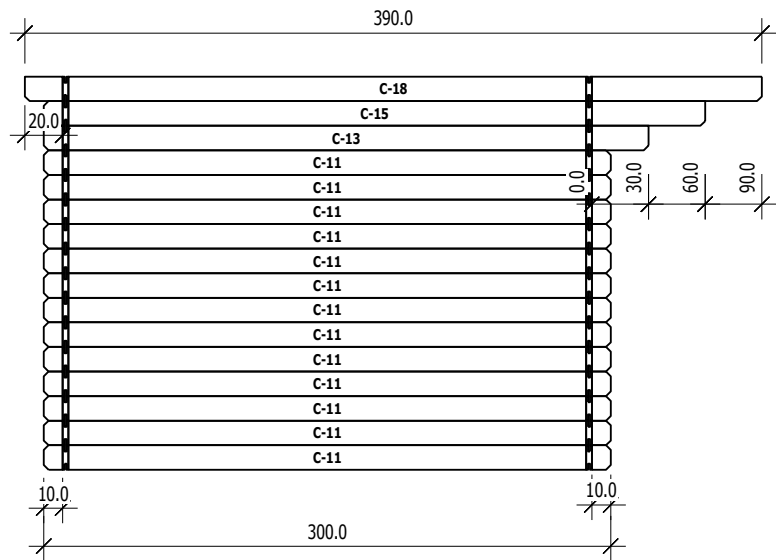
Ansicht von Innen

		H	L	Psc
B	4	13,0	92,0	1
B	6	13,0	184,0	1
B	8	13,0	250,0	15
B	9	6,5	250,0	1
B	10	13,0	250,0	1

3,0

C

M 1:40

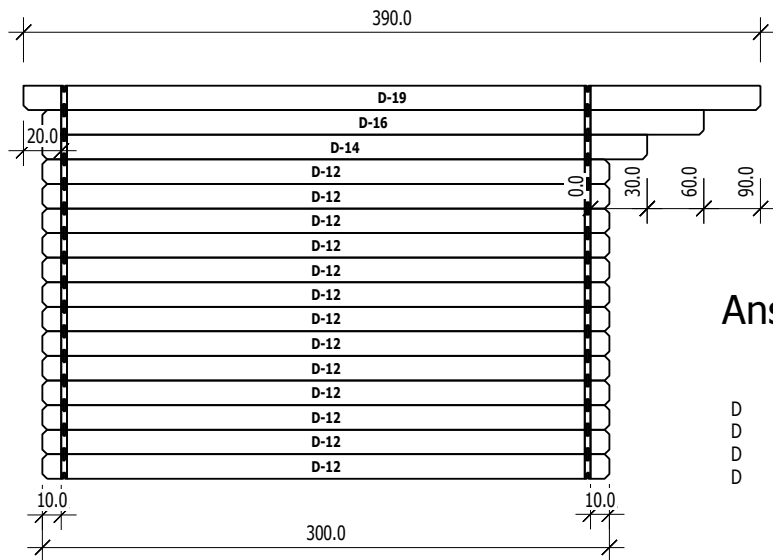


Ansicht von Aussen

	Nr	H	L	Psc
C	11	13,0	300,0	13
C	13	13,0	320,0	1
C	15	13,0	350,0	1
C	18	13,0	390,0	1

D

M 1:40



Ansicht von Innen

	Nr	H	L	Psc
D	12	13,0	300,0	13
D	14	13,0	320,0	1
D	16	13,0	350,0	1
D	19	13,0	390,0	1