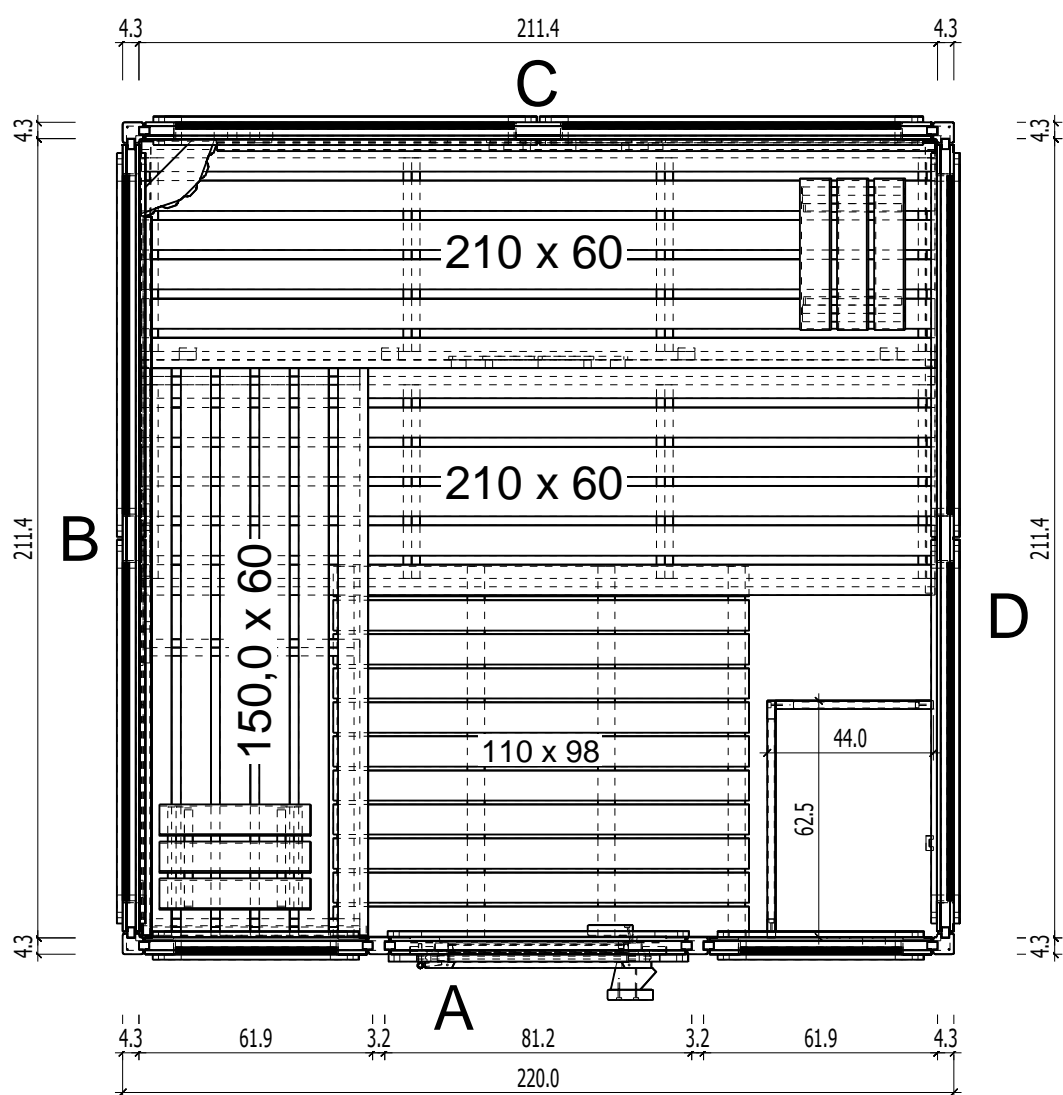
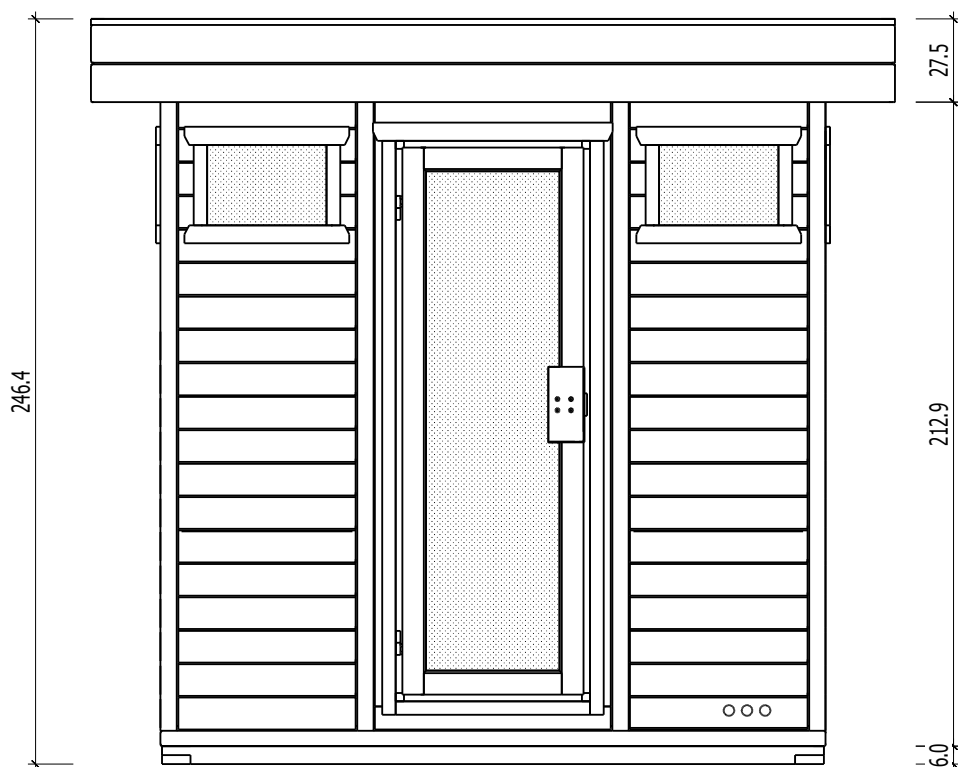
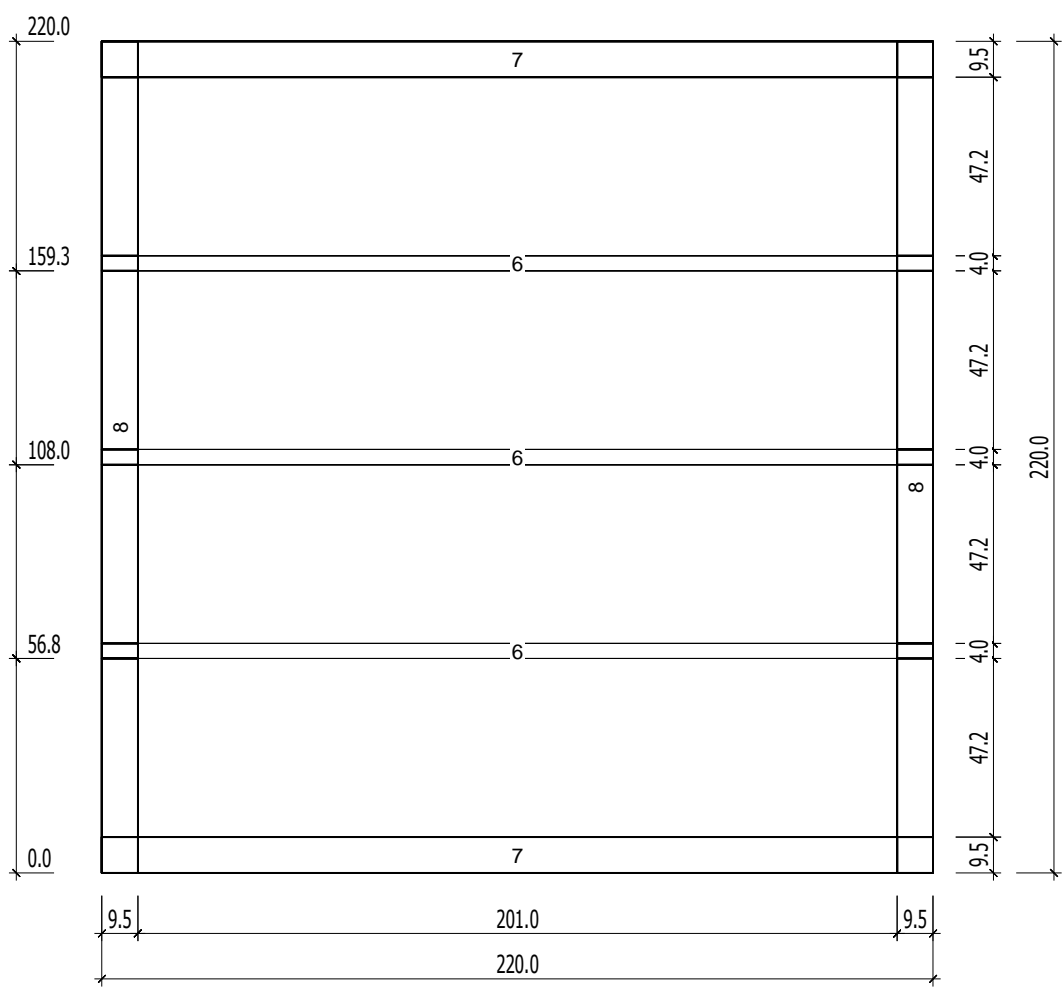


Bemerkung: die Ansicht von Turen, Fenster und anderen Teilen kann abweichen von diesem Bild



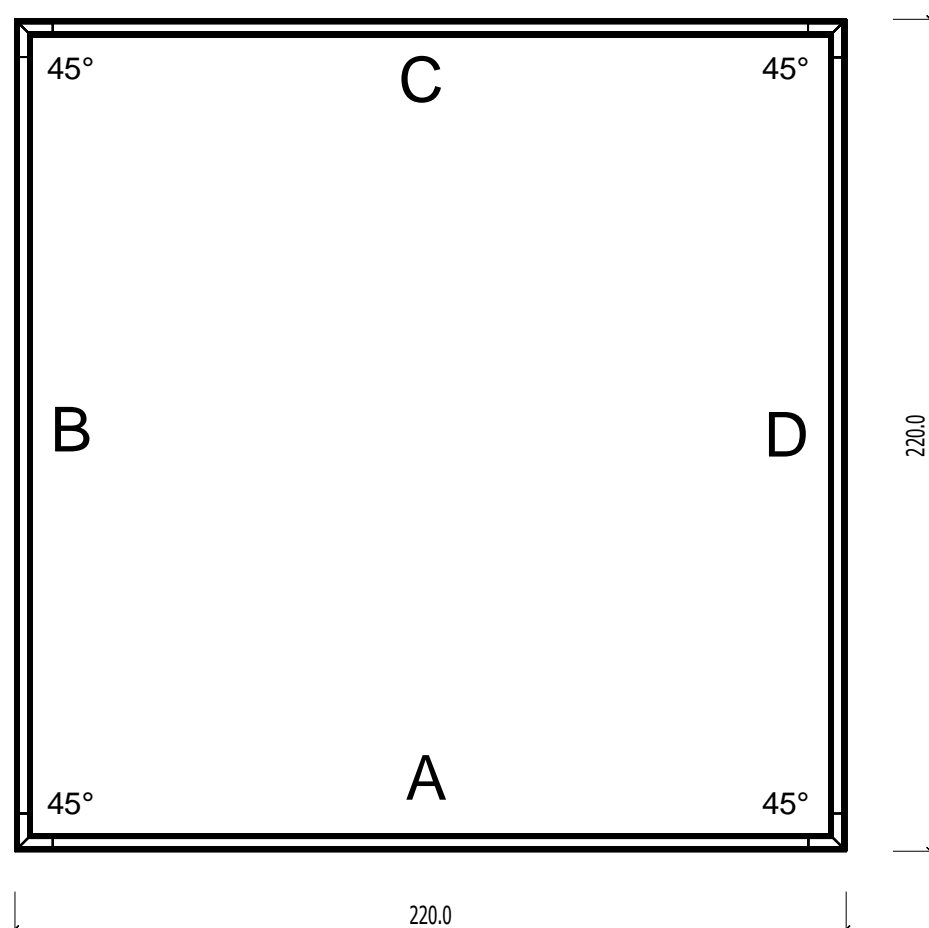
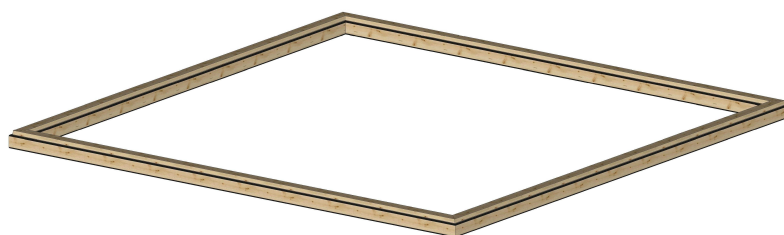
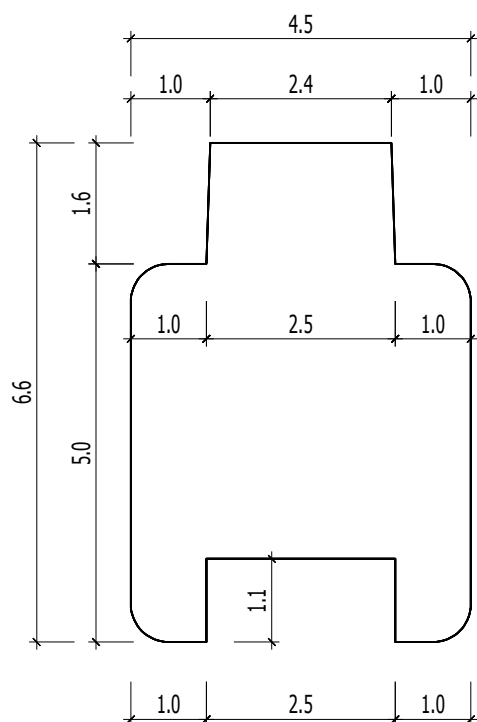
Grundrahmen



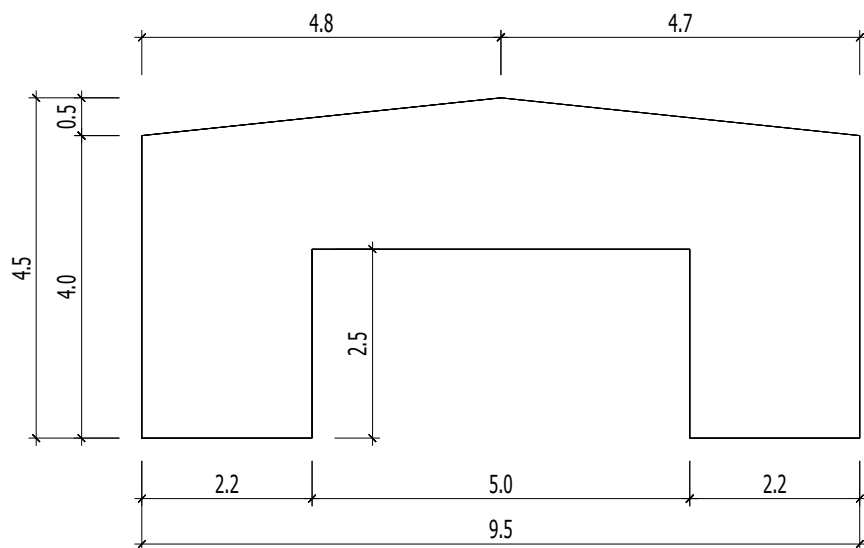
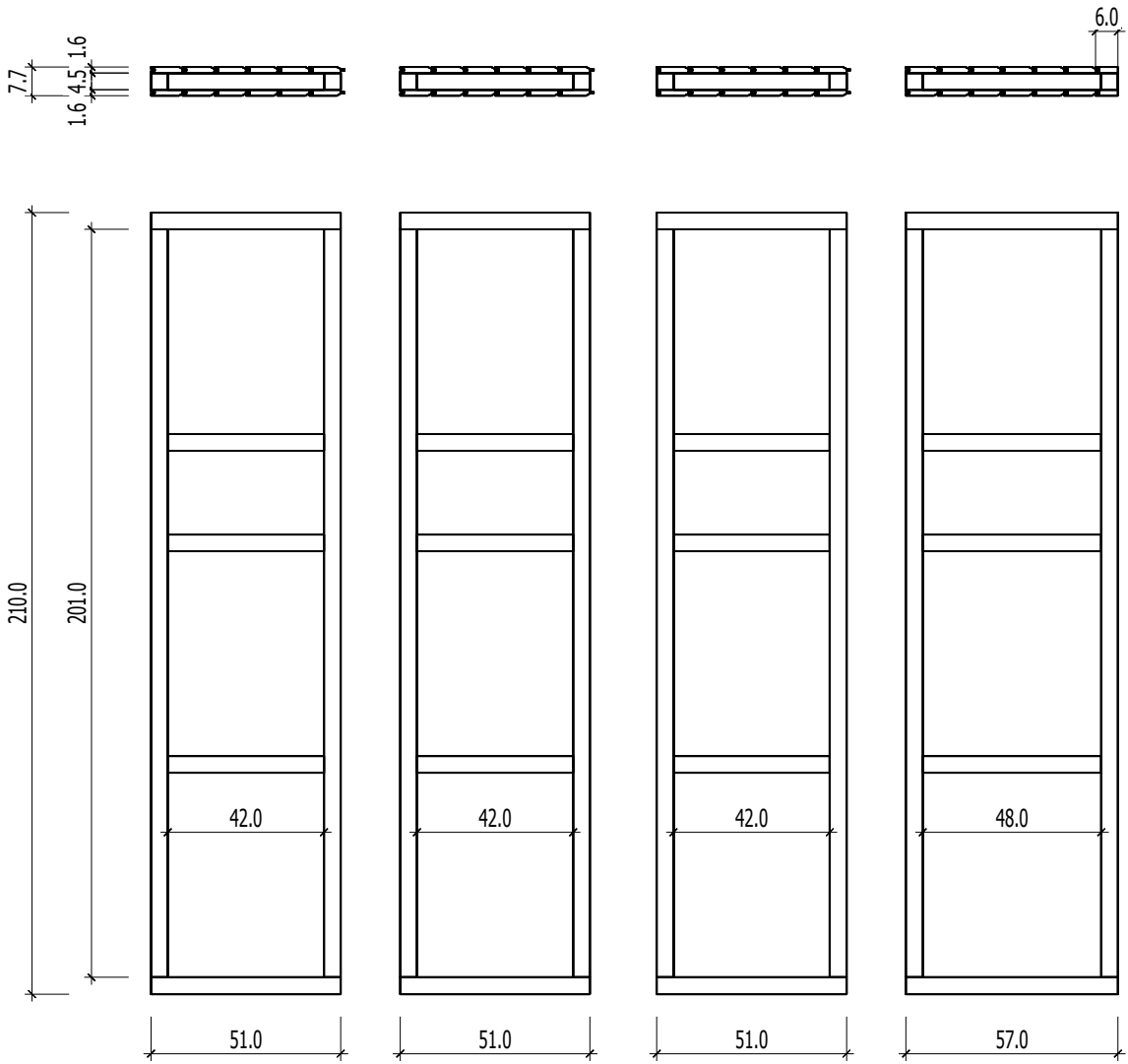
Nr.	B	H	L	Psc
	[cm]	[cm]	[cm]	
6	6,0	4,0	220,0	3
7	9,5	6,0	220,0	2
8	9,5	6,0	220,0	2

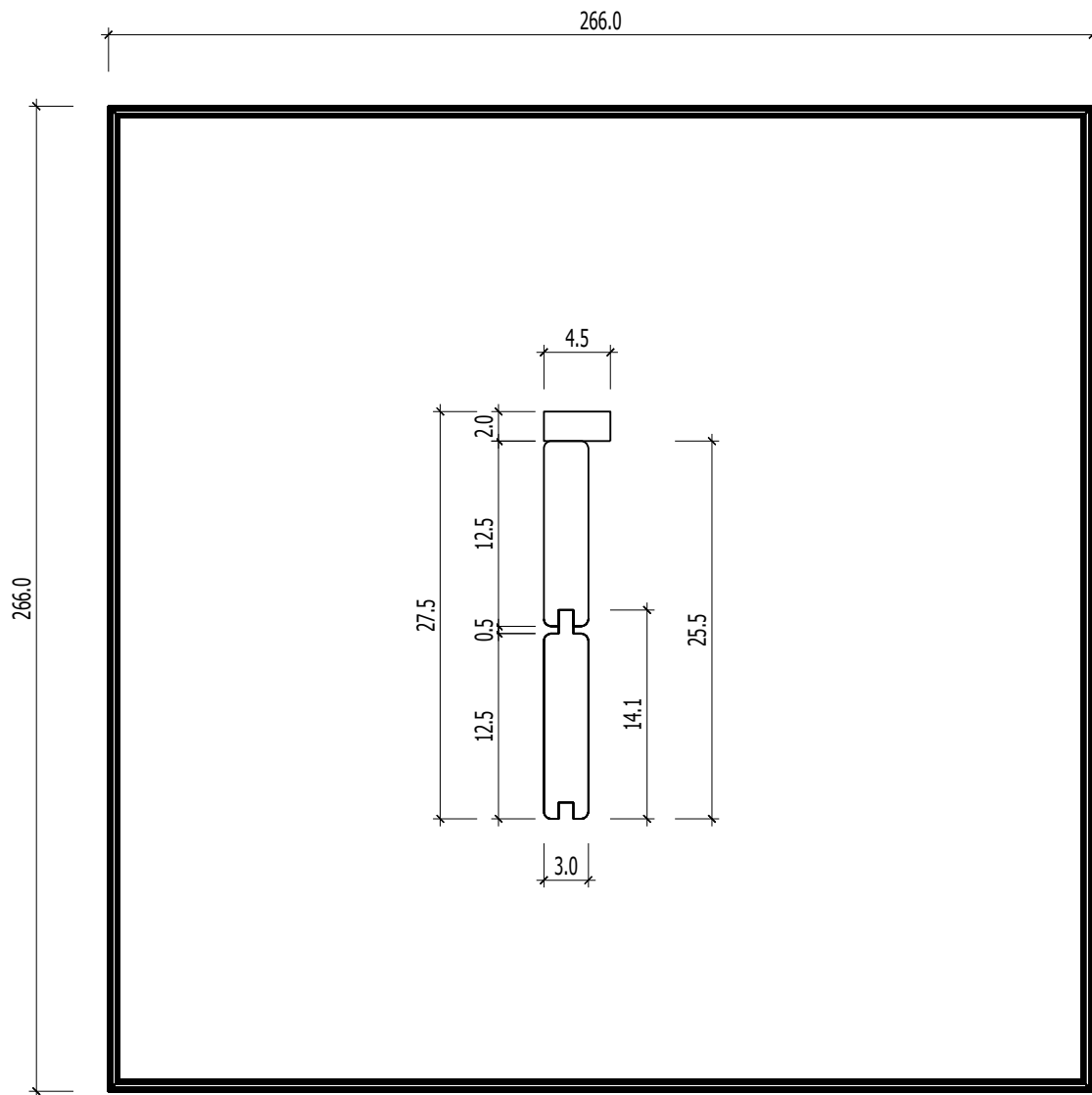
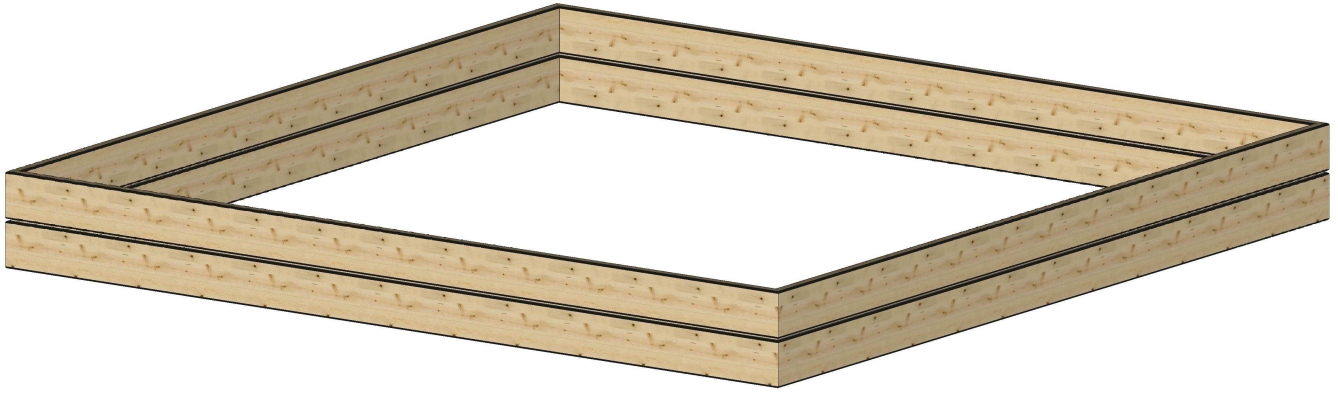


Unterrahm



Dachelemente





Dachrahmen

