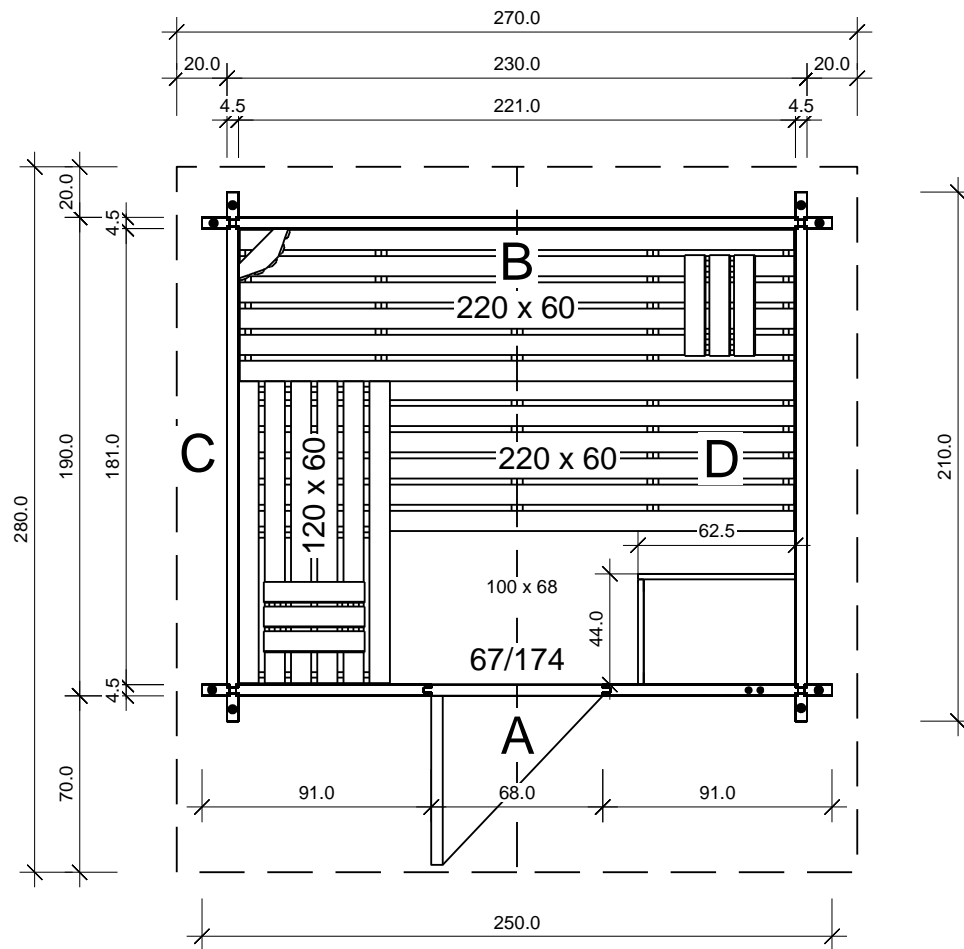


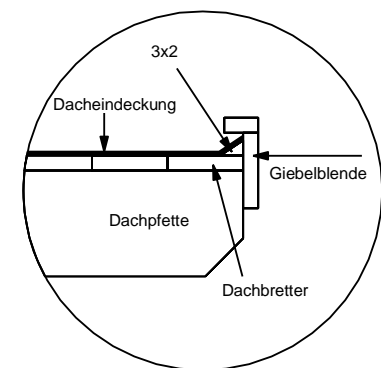
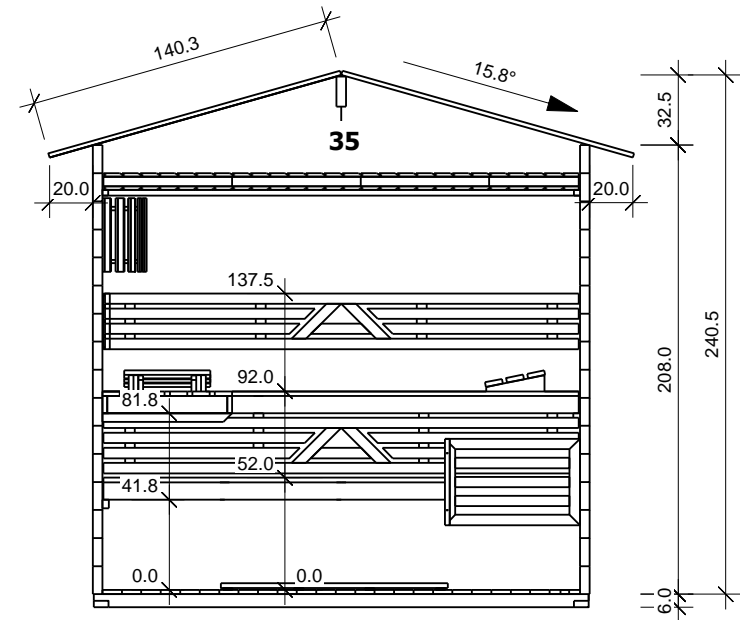
Bemerkung: die ansicht von turen, fenster und andere teile kann abweichen von diesem bild

4,5

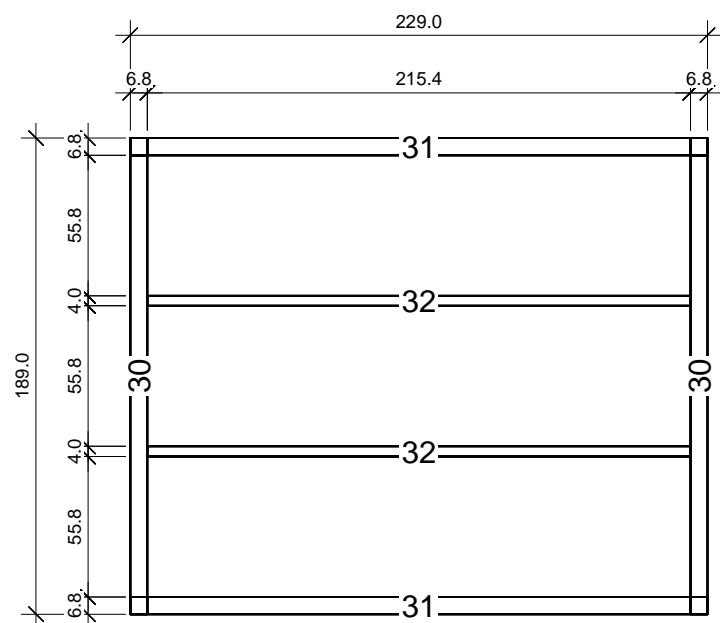
Grundriss



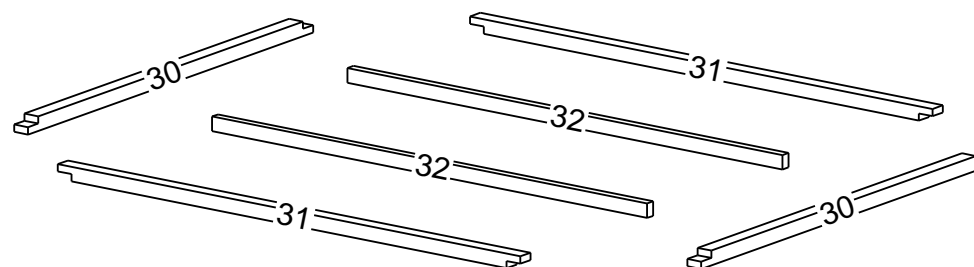
Schnitt



Grundrahmenplan

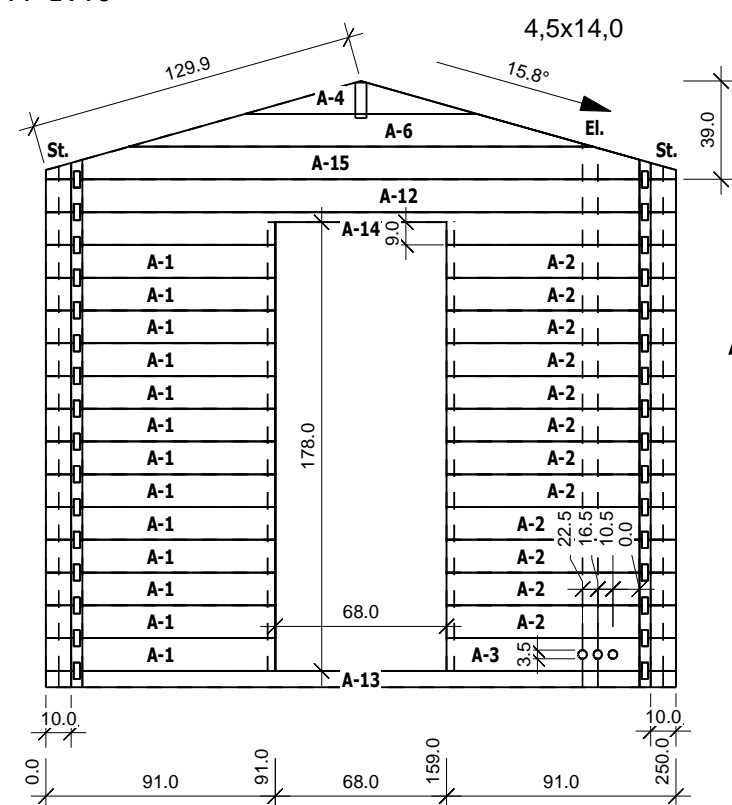


Nr.	B	H	L	Psc
	[cm]	[cm]	[cm]	
30	6.8	6.0	189.0	2
31	6.8	6.0	229.0	2
32	4.0	6.0	215.4	2



A

M 1:40

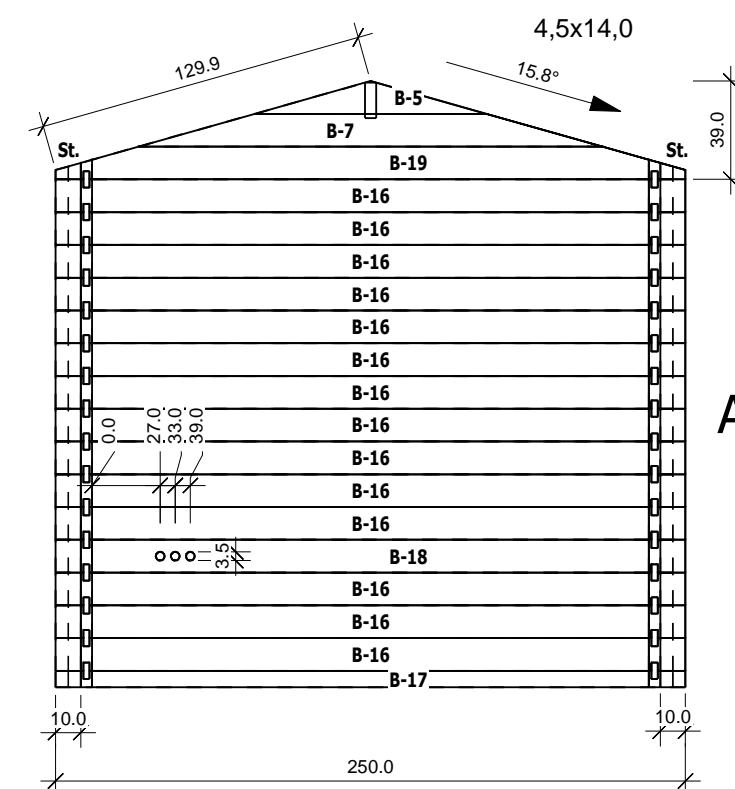


Ansicht von Aussen

	Nr	H	L	Psc
A	1	13.0	91.0	13
A	2	13.0	91.0	12
A	3	13.0	91.0	1
A	4	13.0	92.0	1
A	6	13.0	184.0	1
A	12	13.0	250.0	1
A	13	6.5	250.0	1
A	14	13.0	250.0	1
A	15	13.0	250.0	1

B

M 1:40

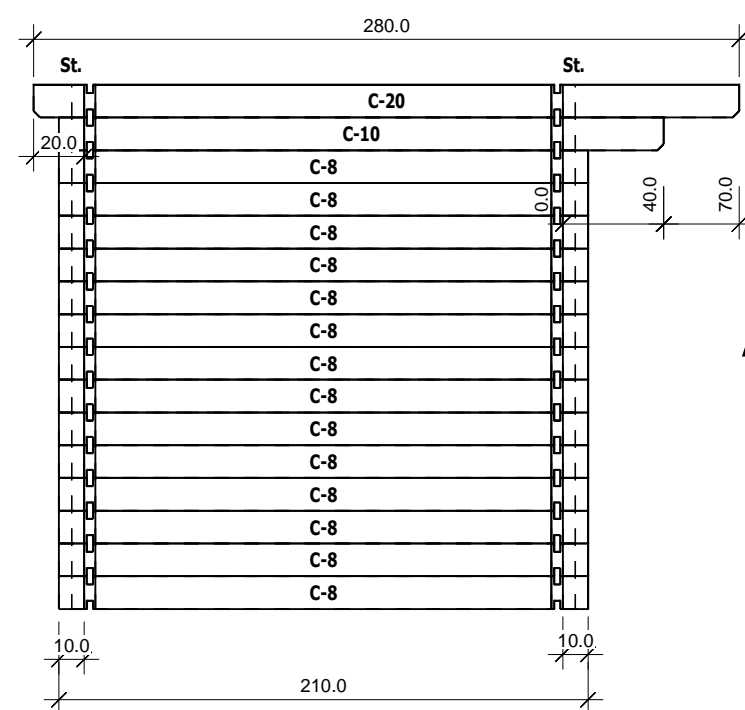


Ansicht von Innen

	Nr	H	L	Psc
C	8	13.0	210.0	14
C	10	13.0	240.0	1
C	20	13.0	280.0	1

C

M 1:40

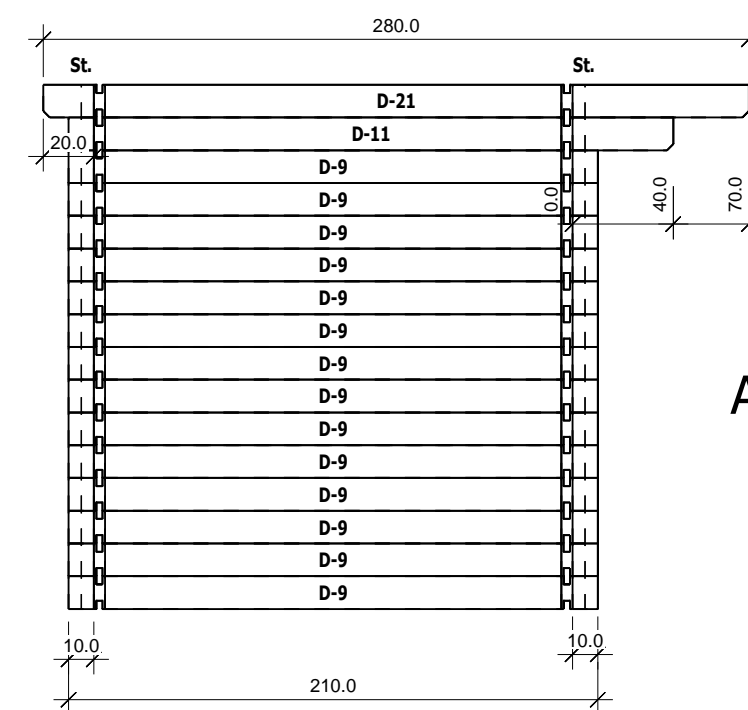


Ansicht von Aussen

	Nr	H	L	Psc
B	5	13.0	92.0	1
B	7	13.0	184.0	1
B	16	13.0	250.0	14
B	17	6.5	250.0	1
B	18	13.0	250.0	1
B	19	13.0	250.0	1

D

M 1:40



Ansicht von Innen

	Nr	H	L	Psc
D	9	13.0	210.0	14
D	11	13.0	240.0	1
D	21	13.0	280.0	1

4,5