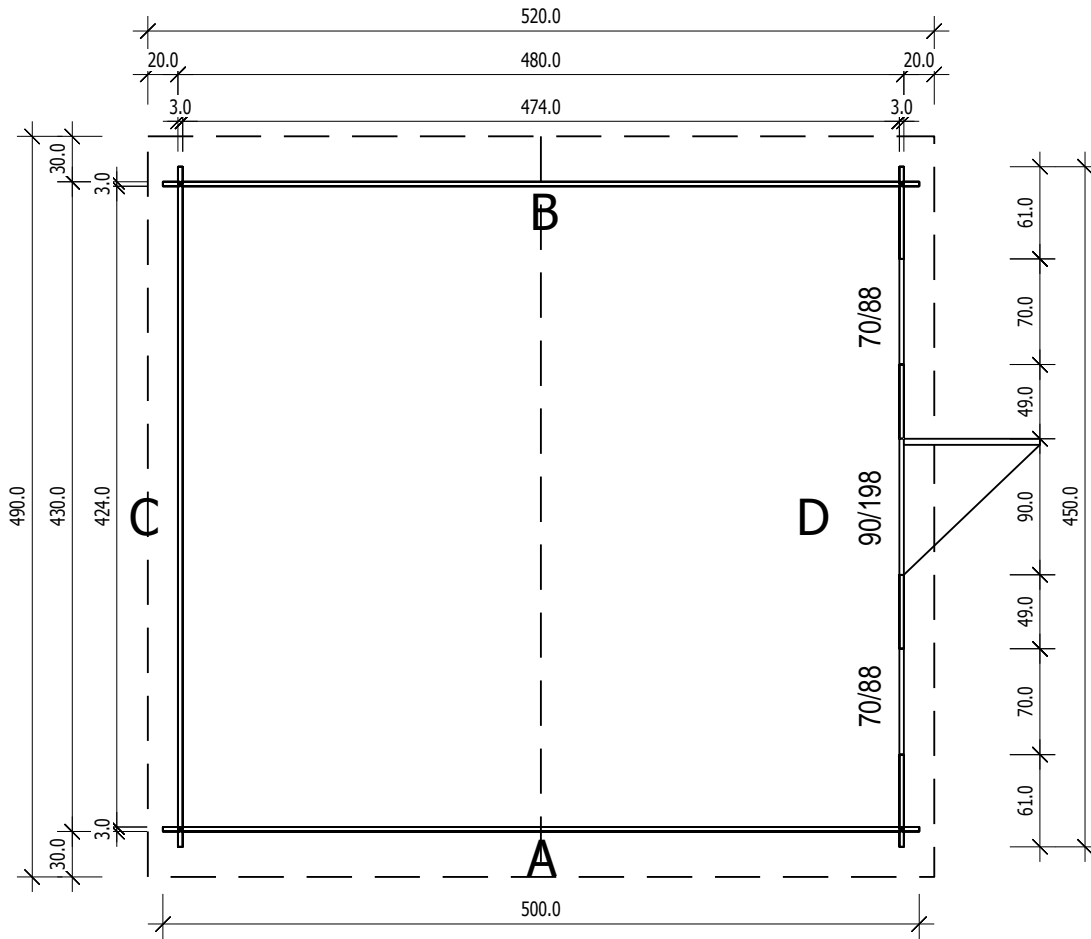


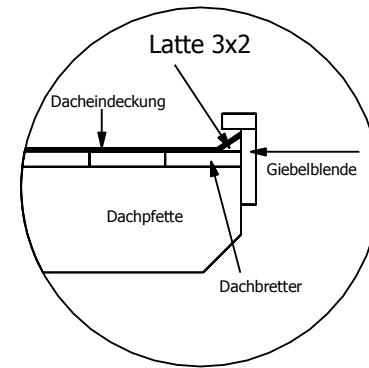
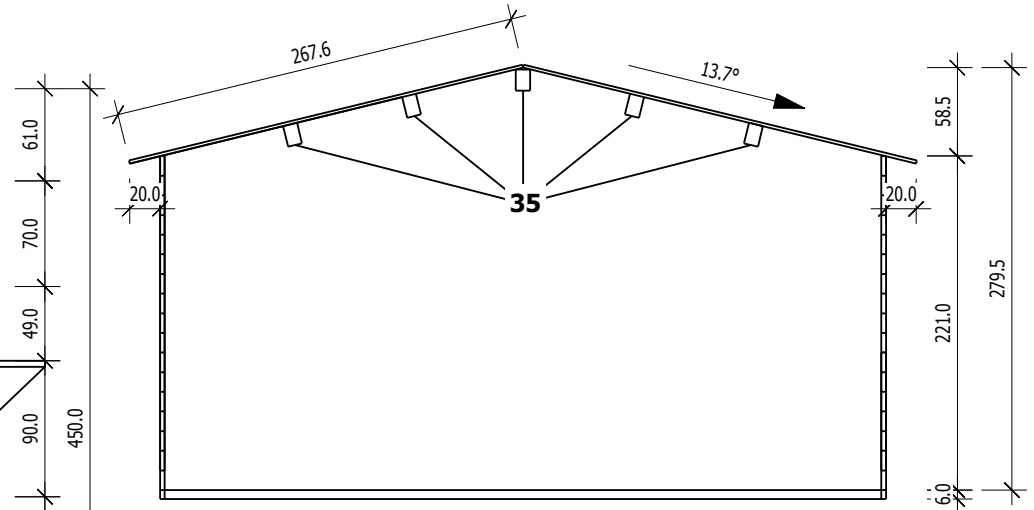
Bemerkung: die Ansicht von Turen, Fenster und anderen Teilen kann abweichen von diesem Bild

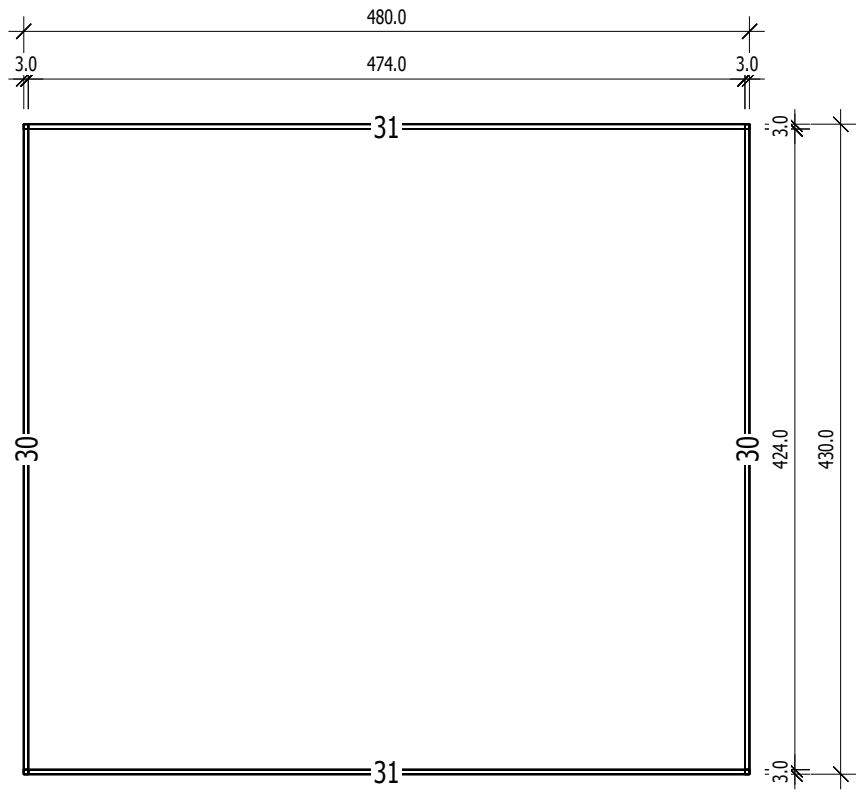


# Grundriss



# Schnitt





## Grundrahmenplan

Nr.	B	H	L	Psc
	[cm]	[cm]	[cm]	
=====				
30	3.0	6.0	430.0	2
31	3.0	6.0	480.0	2

