

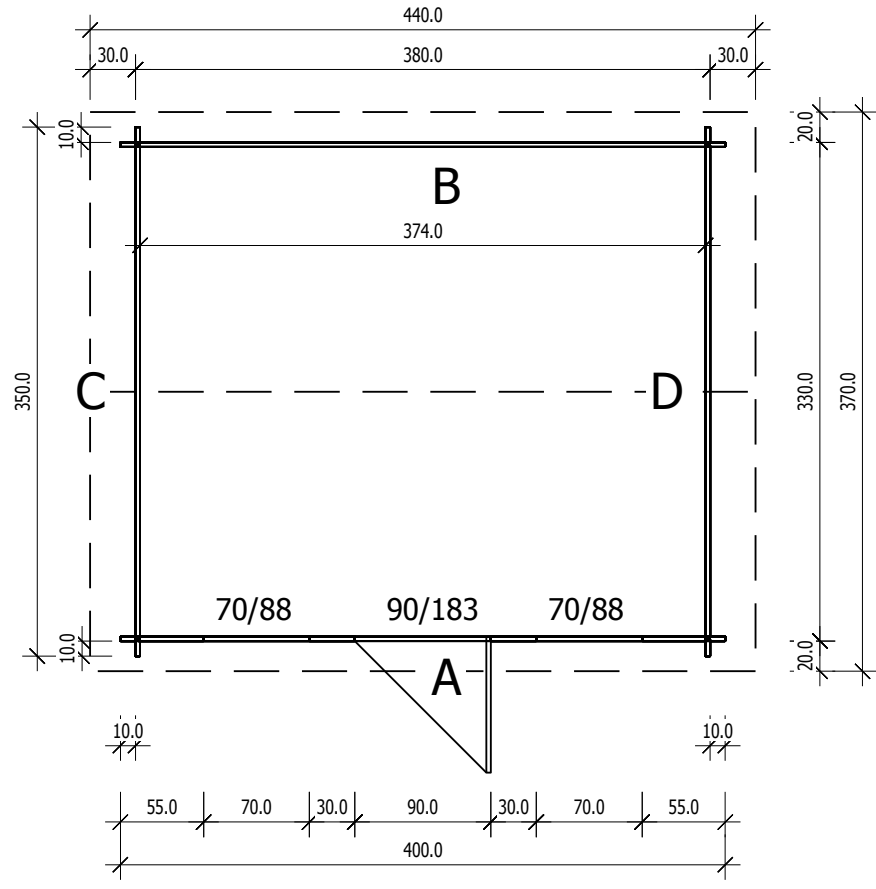


Bemerkung: die Ansicht von Turen, Fenster und anderen Teilen kann abweichen von diesem Bild

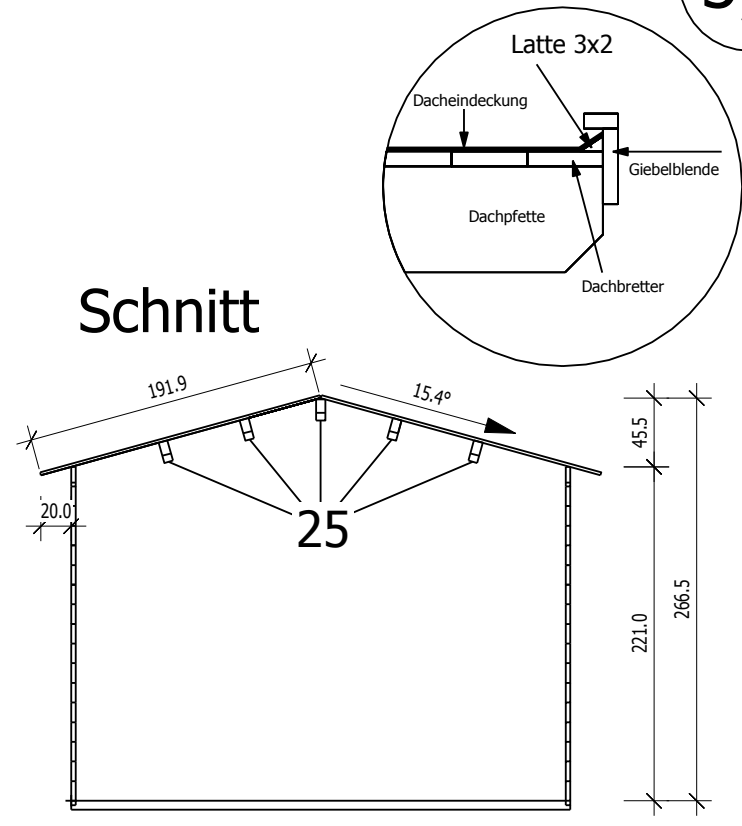


3,0

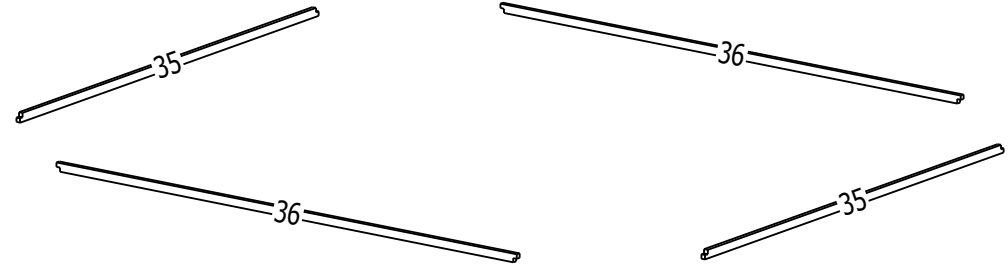
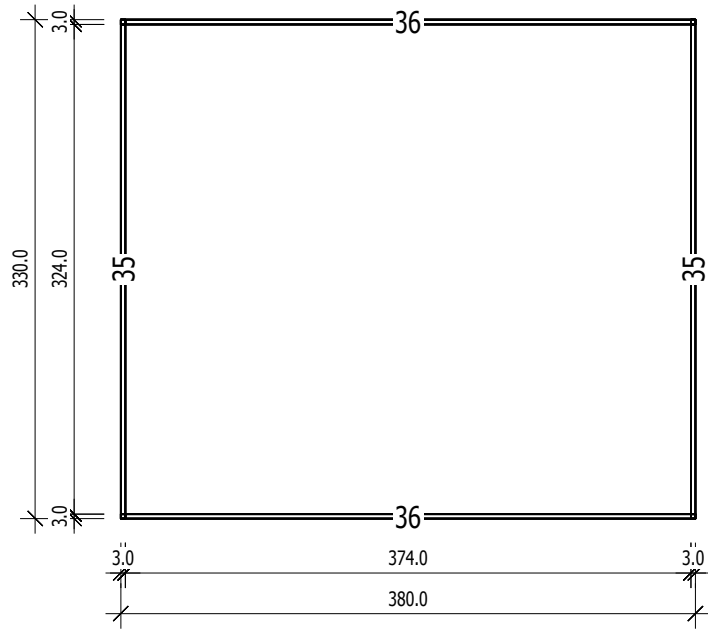
Grundriss



Schnitt



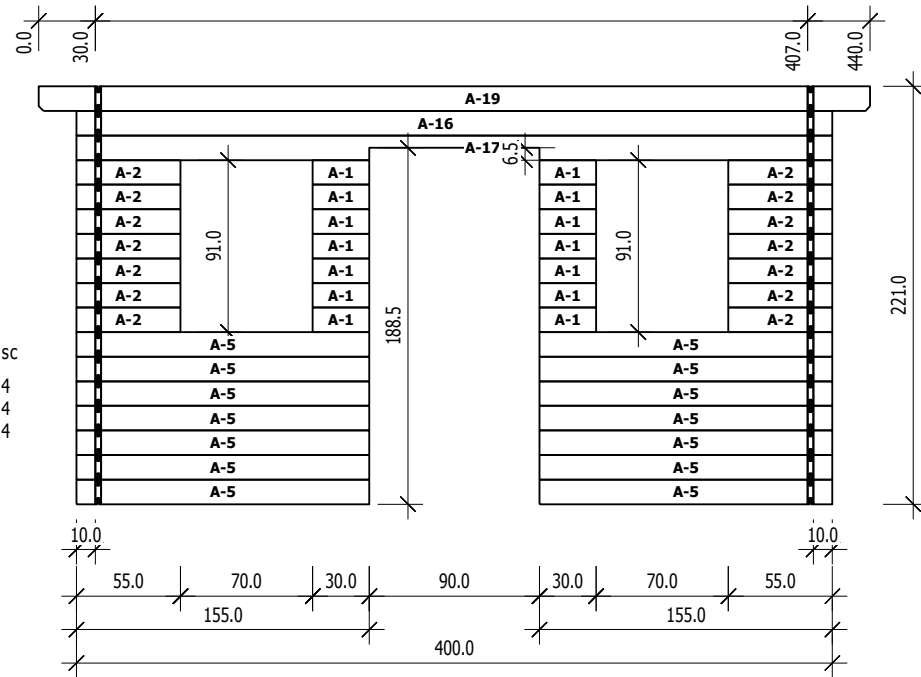
Grundrahmenplan



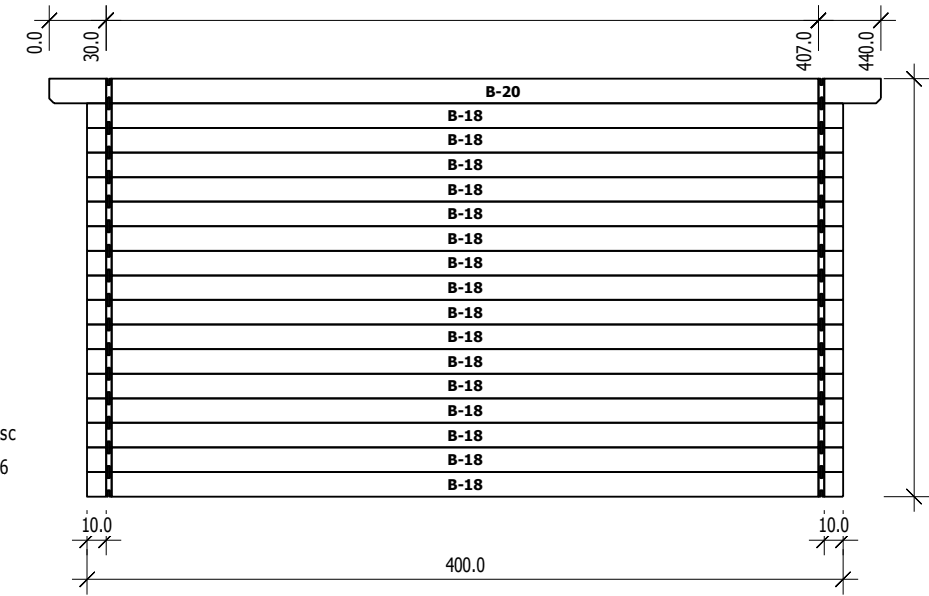
Nr 35 3.0x3.0x330.0 - 2vnt.

Nr 36 3.0x3.0x380.0 - 2vnt.

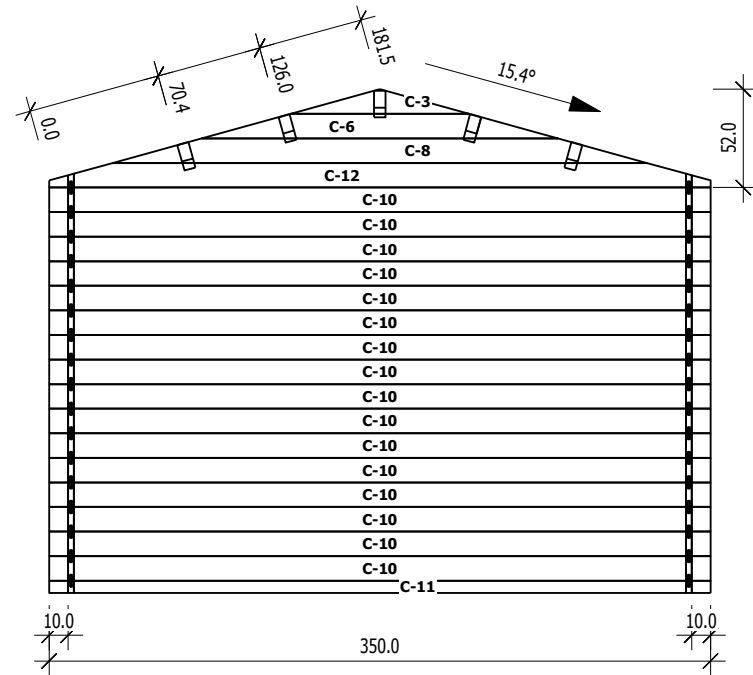
	Nr	H	L	Psc
A	1	13.0	30.0	14
A	2	13.0	55.0	14
A	5	13.0	155.0	14
A	16	13.0	400.0	1
A	17	13.0	400.0	1
A	19	13.0	440.0	1



	Nr	H	L	Psc
B	18	13.0	400.0	16
B	20	13.0	440.0	1



	Nr	H	L	Psc
C	3	13.0	94.3	1
C	6	13.0	188.6	1
C	8	13.0	282.9	1
C	10	13.0	350.0	16
C	11	6.5	350.0	1
C	12	13.0	350.0	1



	Nr	H	L	Psc
D	4	13.0	94.3	1
D	7	13.0	188.6	1
D	9	13.0	282.9	1
D	13	13.0	350.0	16
D	14	6.5	350.0	1
D	15	13.0	350.0	1

