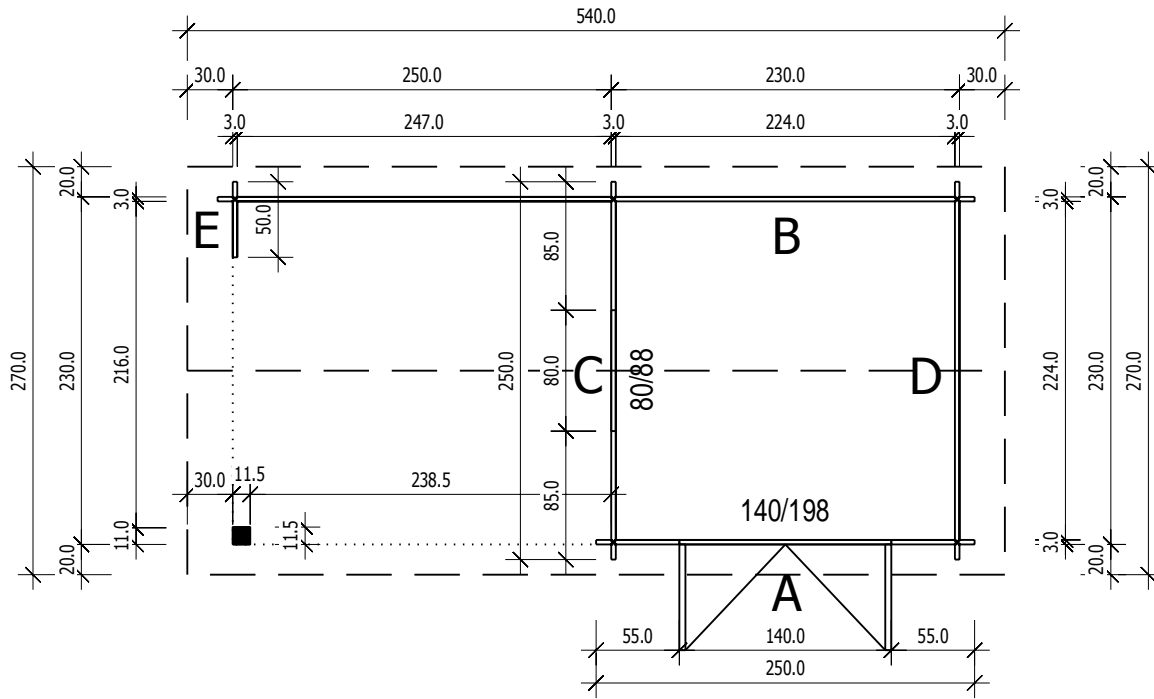


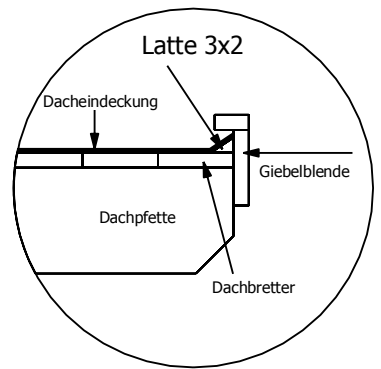
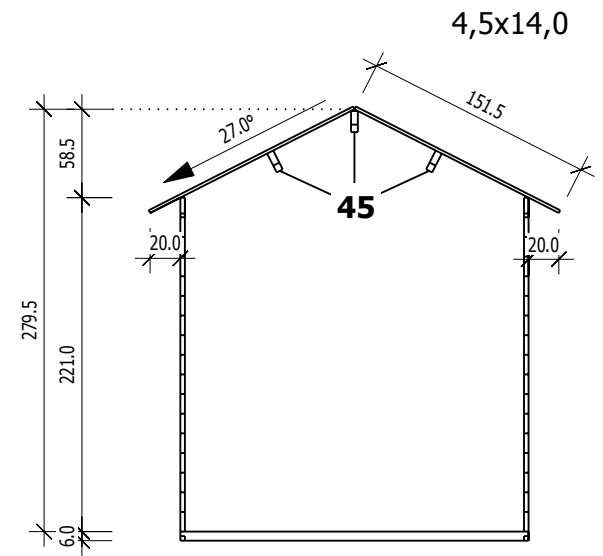
Bemerkung: die Ansicht von Turen, Fenster und anderen Teilen kann abweichen von diesem Bild

Grundriss



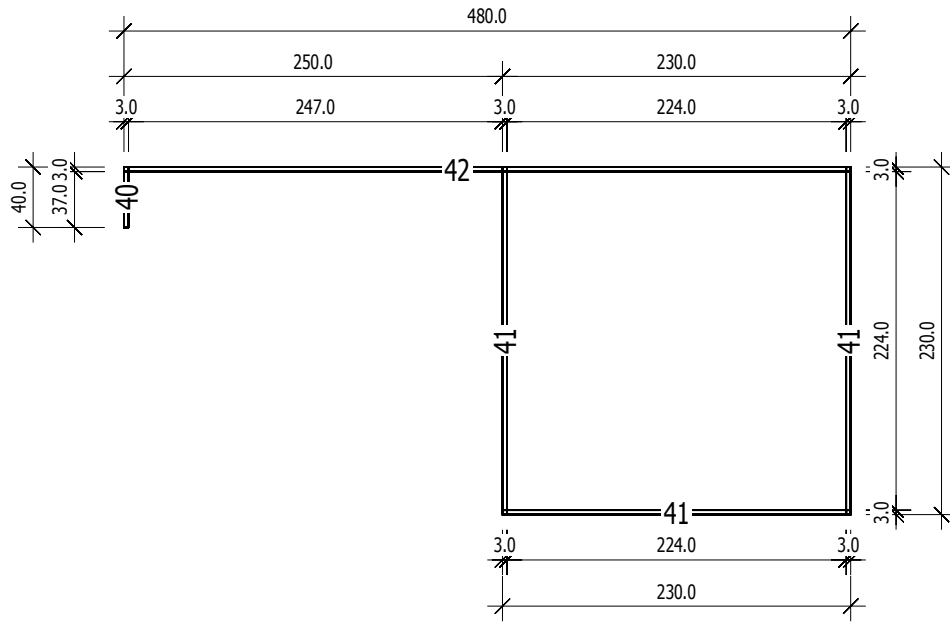
3,0

Schnitt

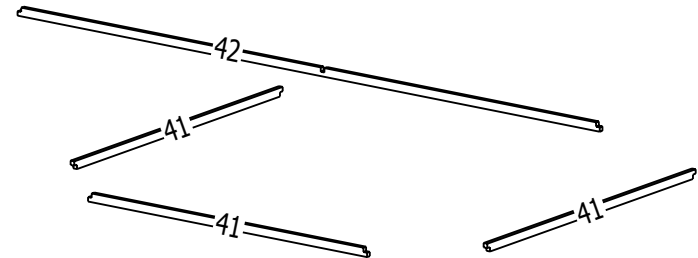


Grundrahmenplan

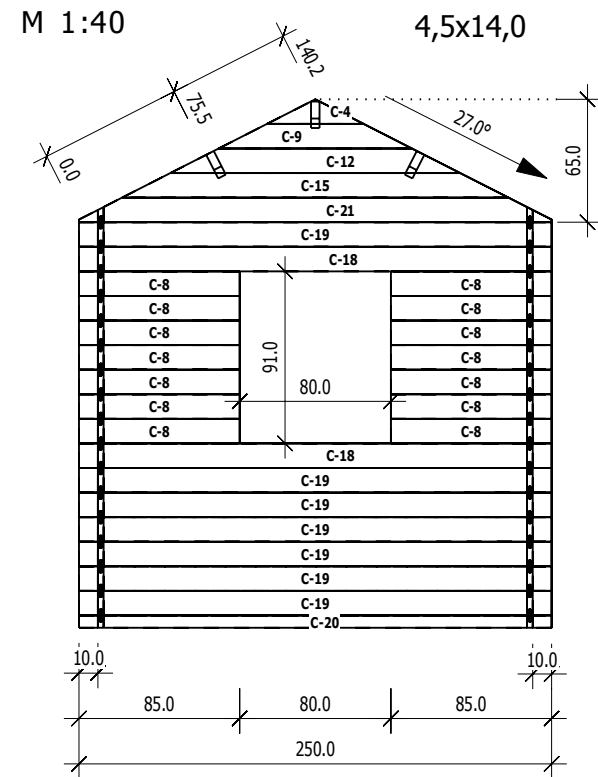
3,0



Nr.	B	H	L	Psc
	[cm]	[cm]	[cm]	
40	3.0	6.0	40.0	1
41	3.0	6.0	230.0	3
42	3.0	6.0	480.0	1

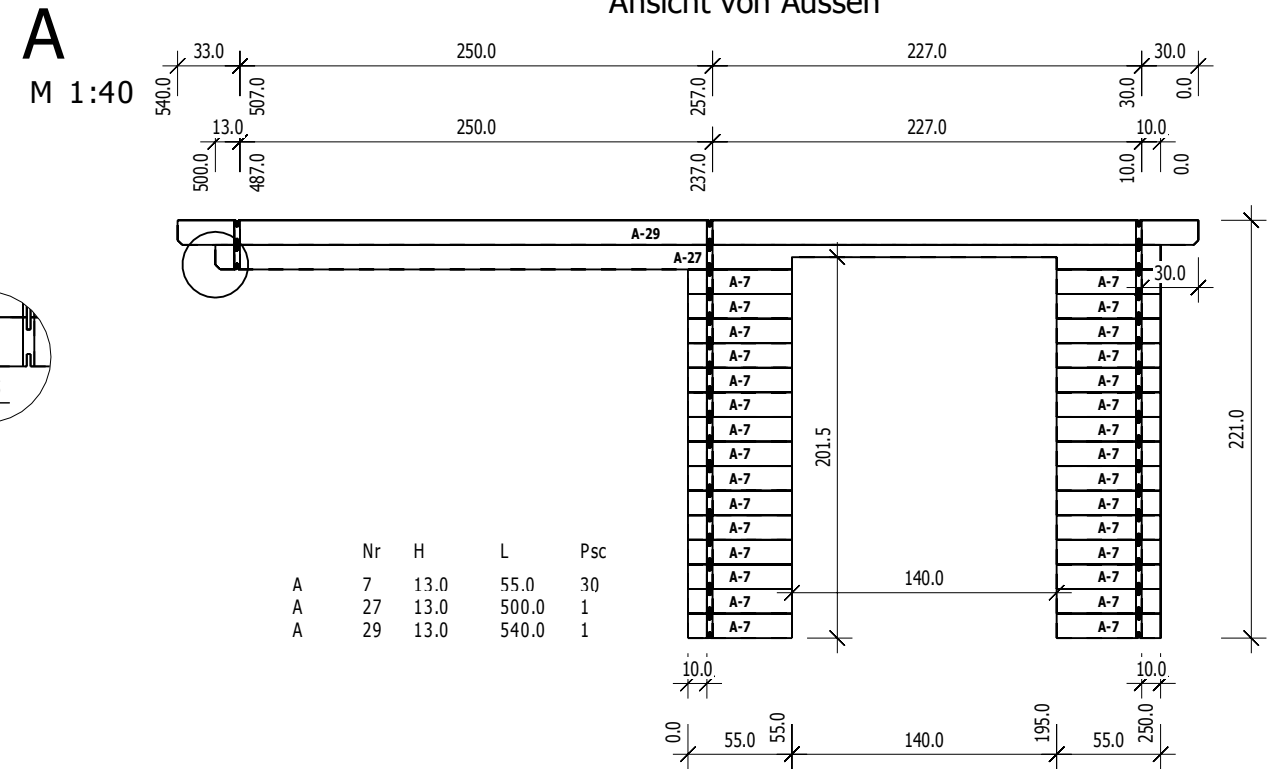


C Ansicht von Aussen



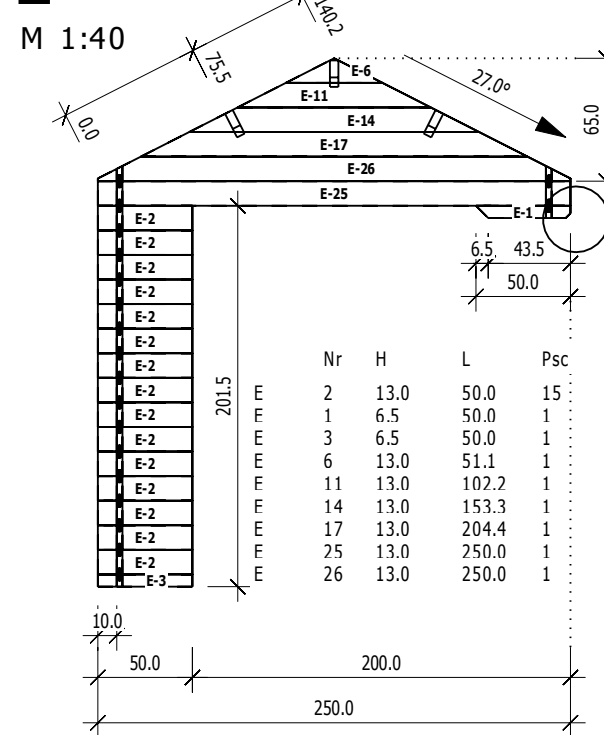
	Nr	H	L	Psc
C	4	13.0	51.1	1
C	8	13.0	85.0	14
C	9	13.0	102.2	1
C	12	13.0	153.3	1
C	15	13.0	204.4	1
C	18	13.0	250.0	2
C	19	13.0	250.0	7
C	20	6.5	250.0	1
C	21	13.0	250.0	1

Ansicht von Aussen



	Nr	H	L	Psc
A	7	13.0	55.0	30
A	27	13.0	500.0	1
A	29	13.0	540.0	1

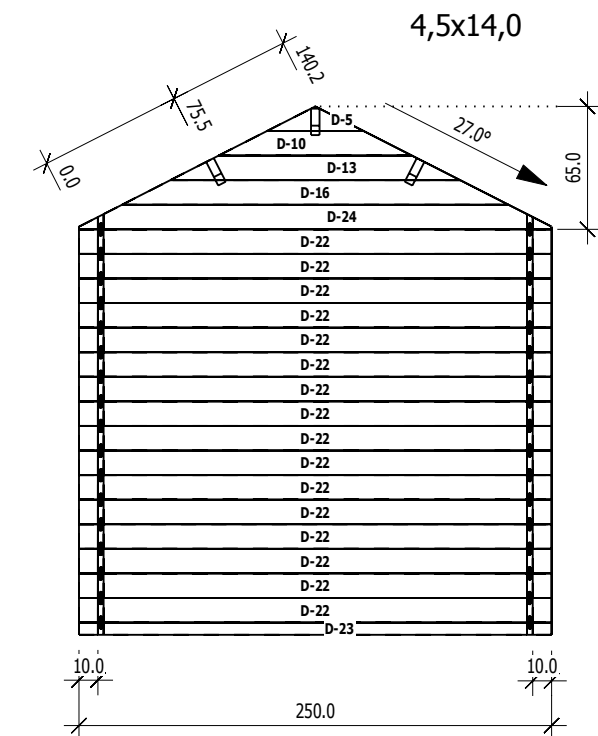
E 4,5x14,0



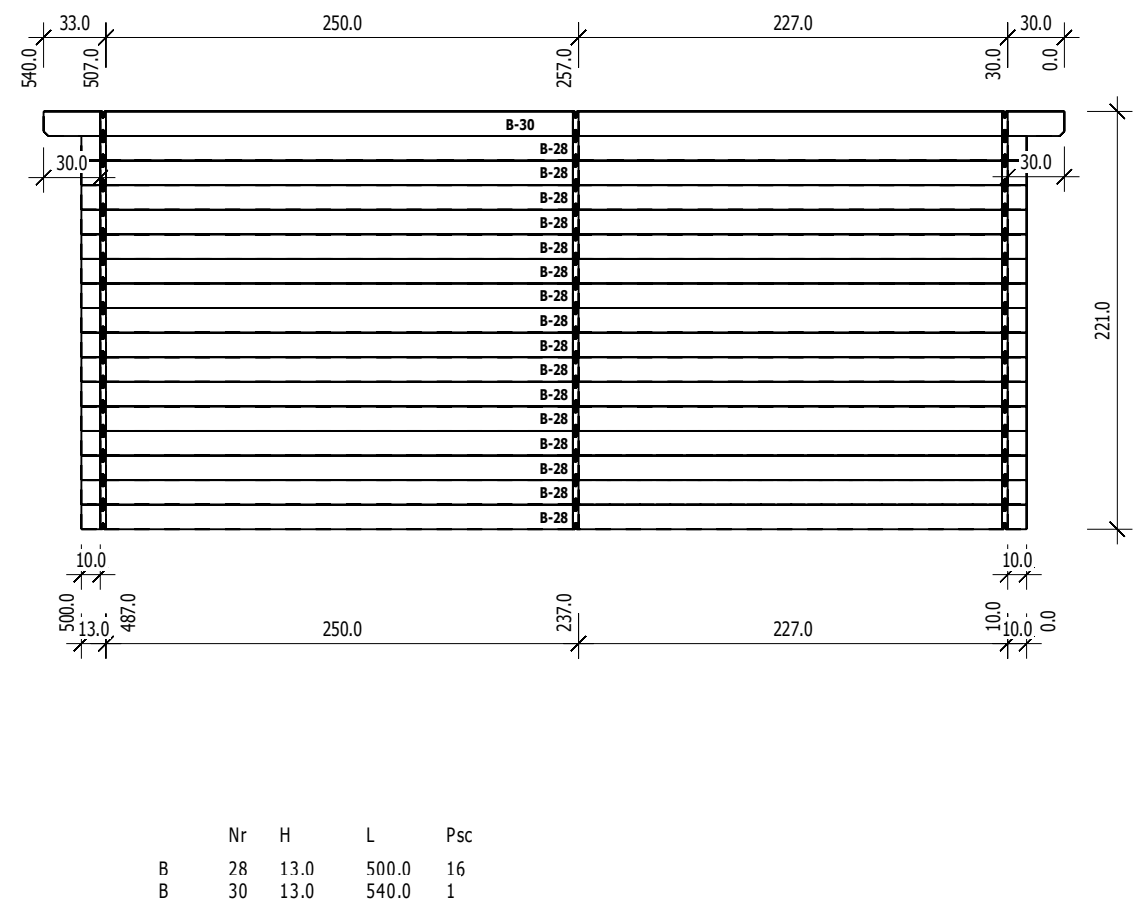
	Nr	H	L	Psc
E	2	13.0	50.0	15
E	1	6.5	50.0	1
E	3	6.5	50.0	1
E	6	13.0	51.1	1
E	11	13.0	102.2	1
E	14	13.0	153.3	1
E	17	13.0	204.4	1
E	25	13.0	250.0	1
E	26	13.0	250.0	1

	Nr	H	L	Psc
D	5	13.0	51.1	1
D	10	13.0	102.2	1
D	13	13.0	153.3	1
D	16	13.0	204.4	1
D	22	13.0	250.0	16
D	23	6.5	250.0	1
D	24	13.0	250.0	1

D Ansicht von Innen



B Ansicht von Innen



	Nr	H	L	Psc
B	28	13.0	500.0	16
B	30	13.0	540.0	1