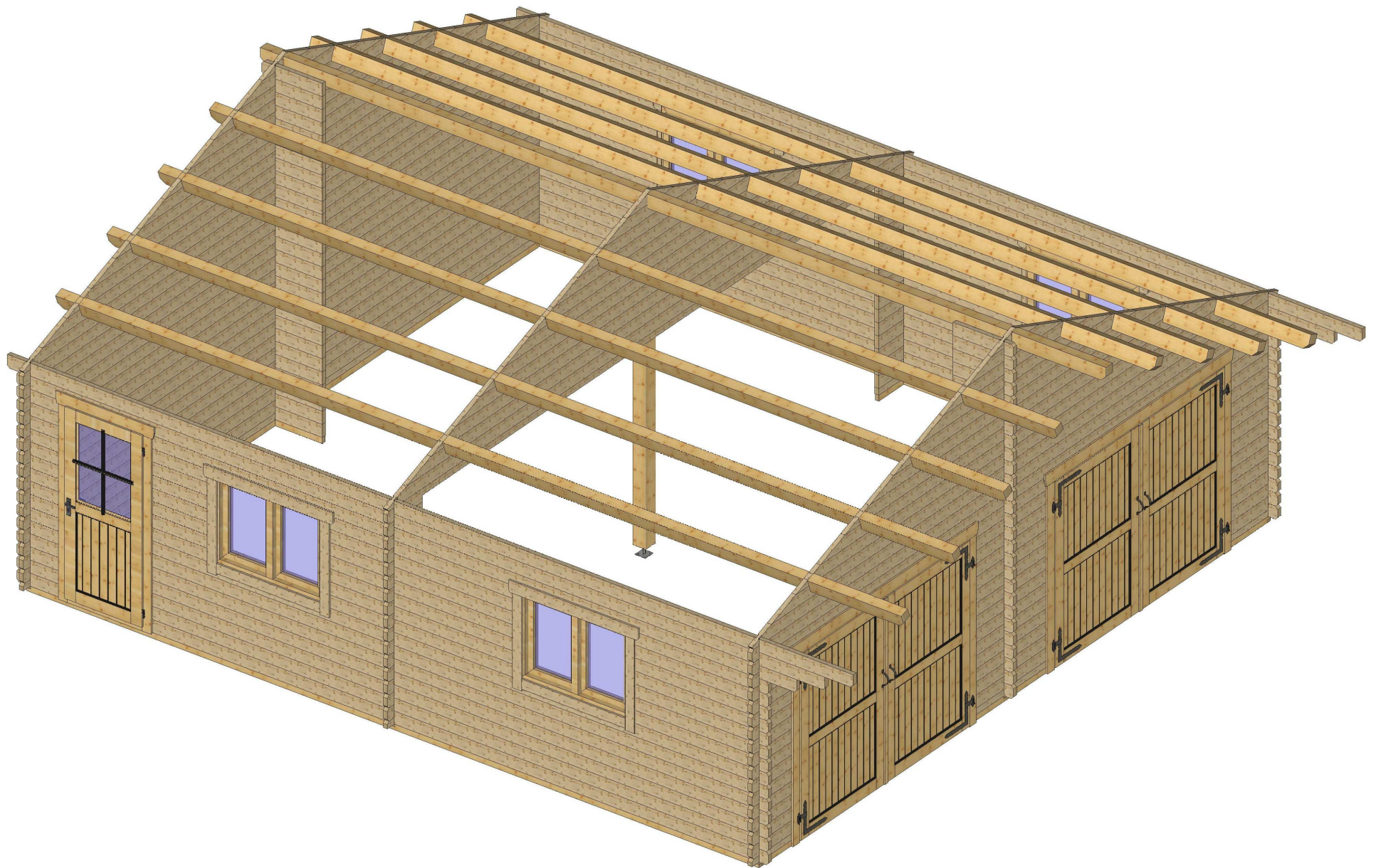


Bemerkung: die Ansicht von Turen, Fenster und anderen Teilen kann abweichen von diesem Bild

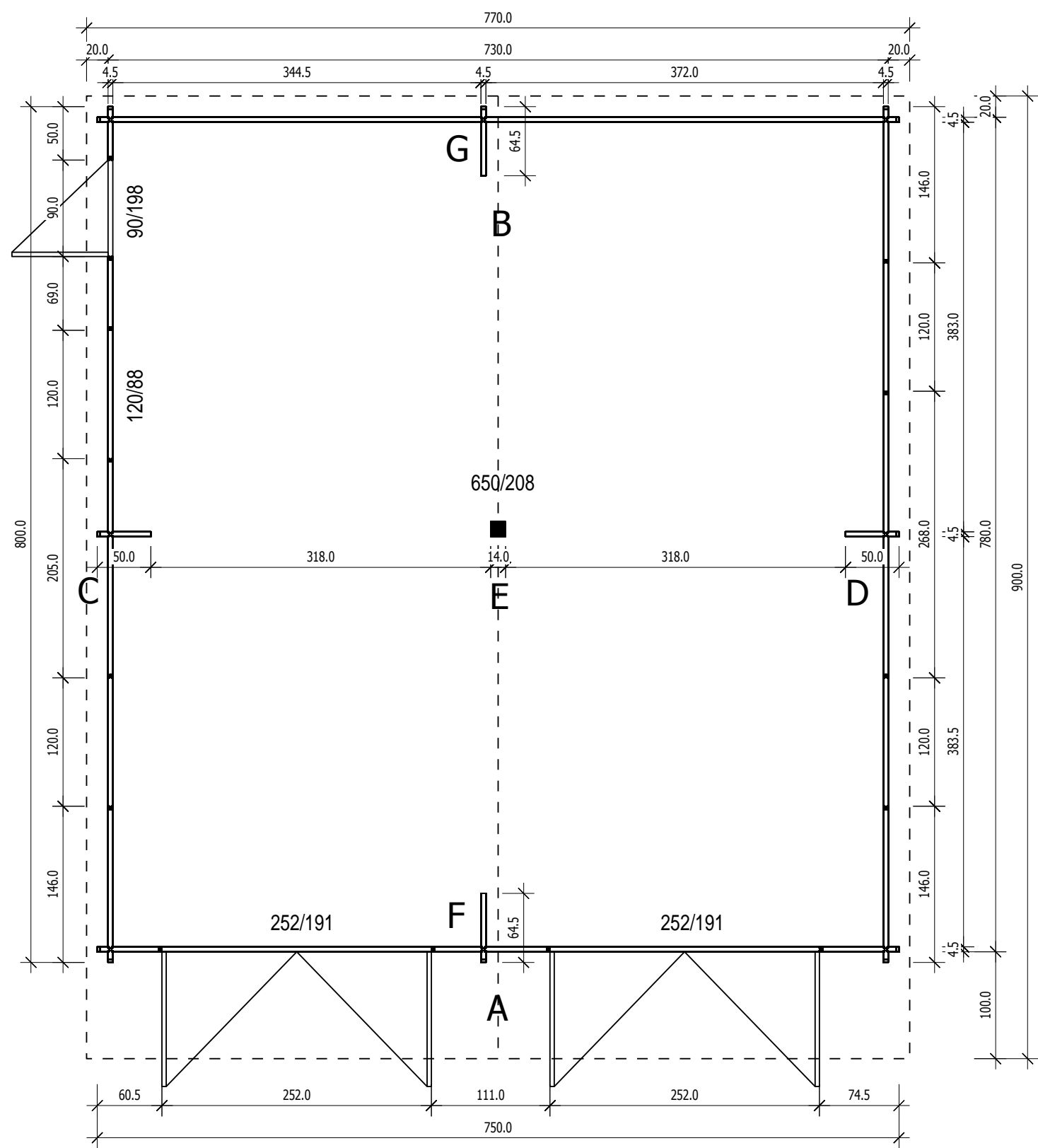




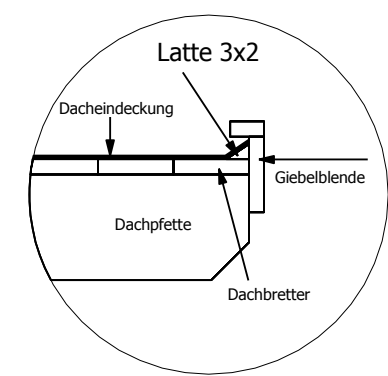
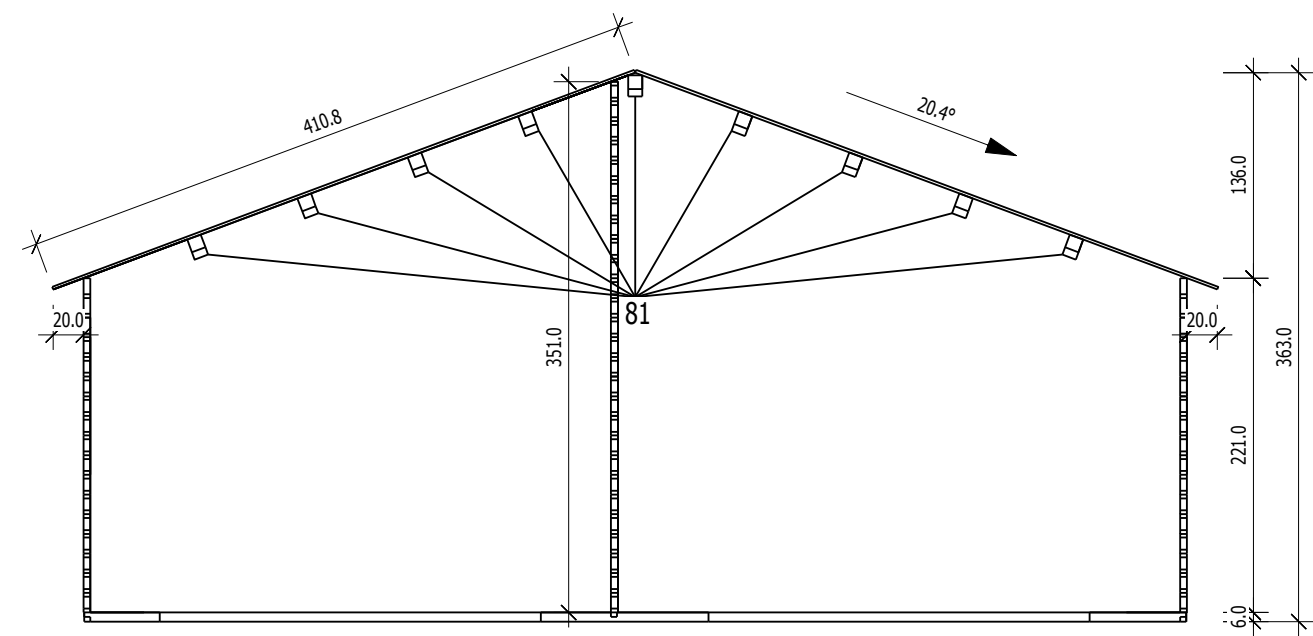
Bemerkung: die Ansicht von Turen, Fenster und anderen Teilen kann abweichen von diesem Bild

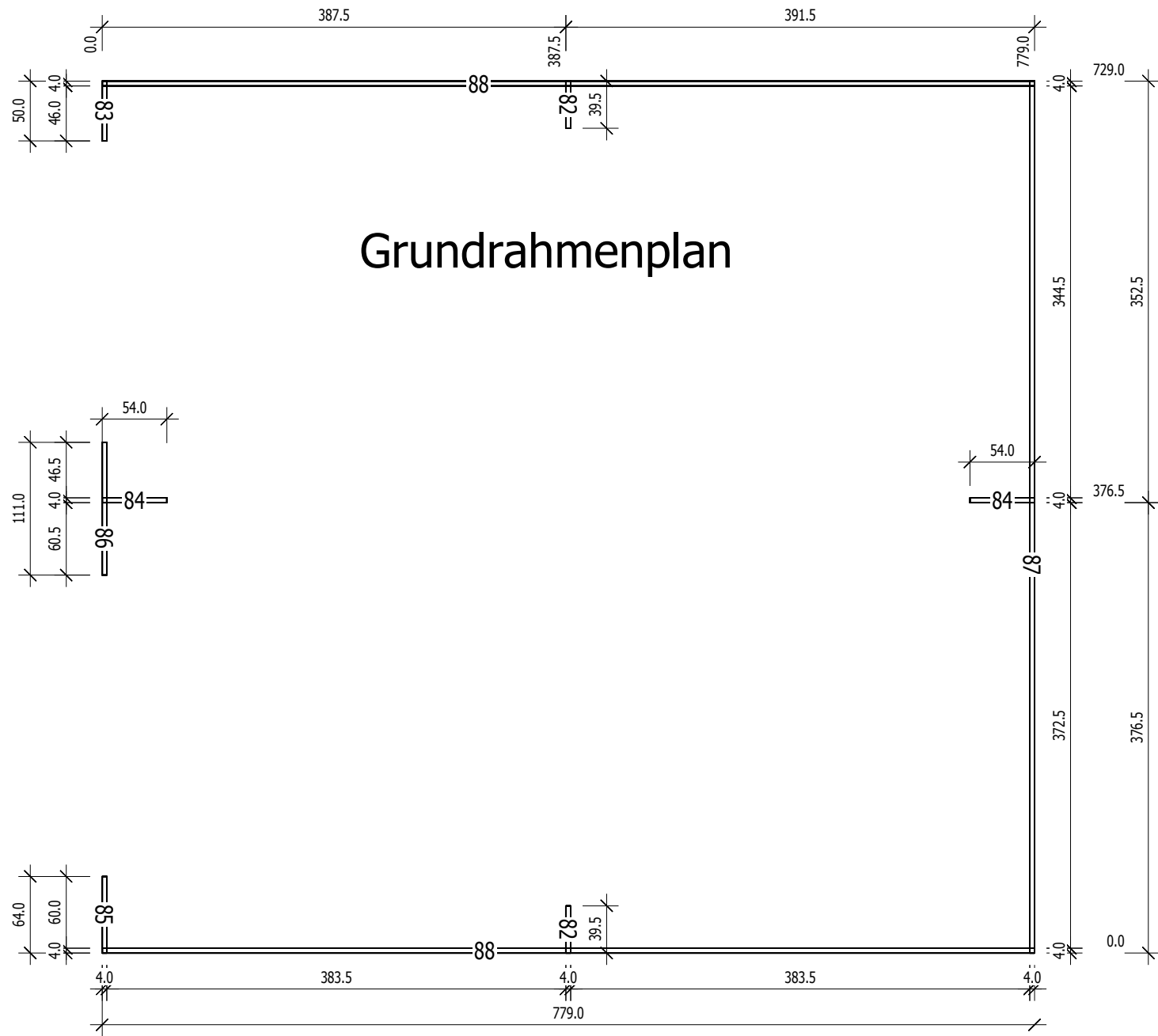
Grundriss

4,5



Schnitt



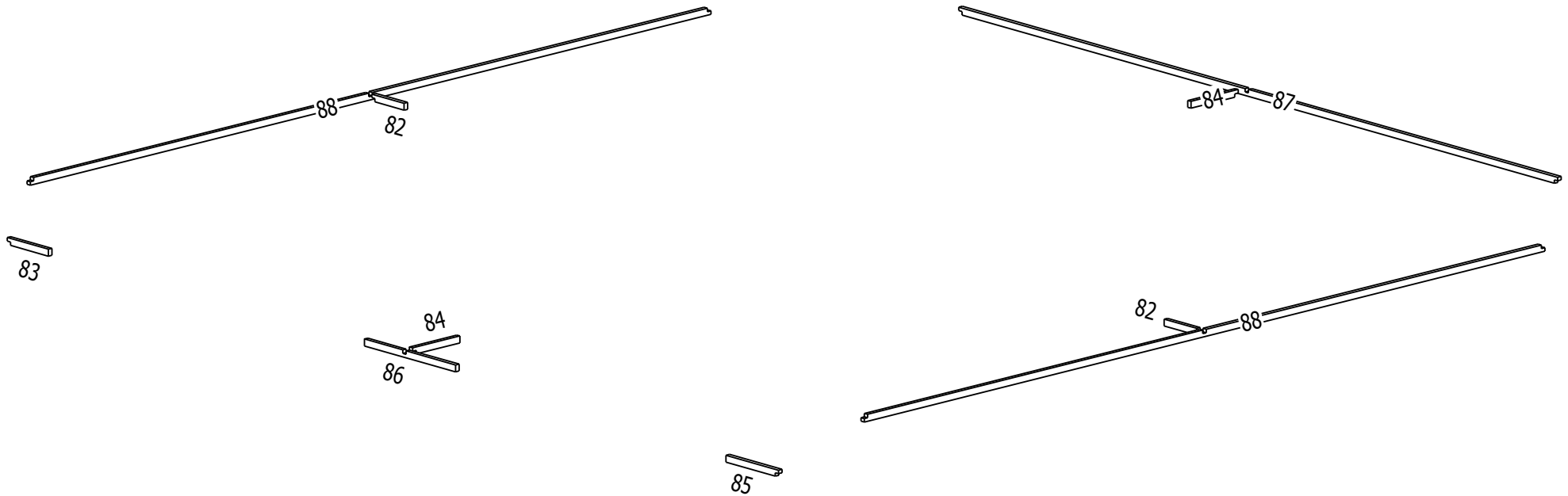


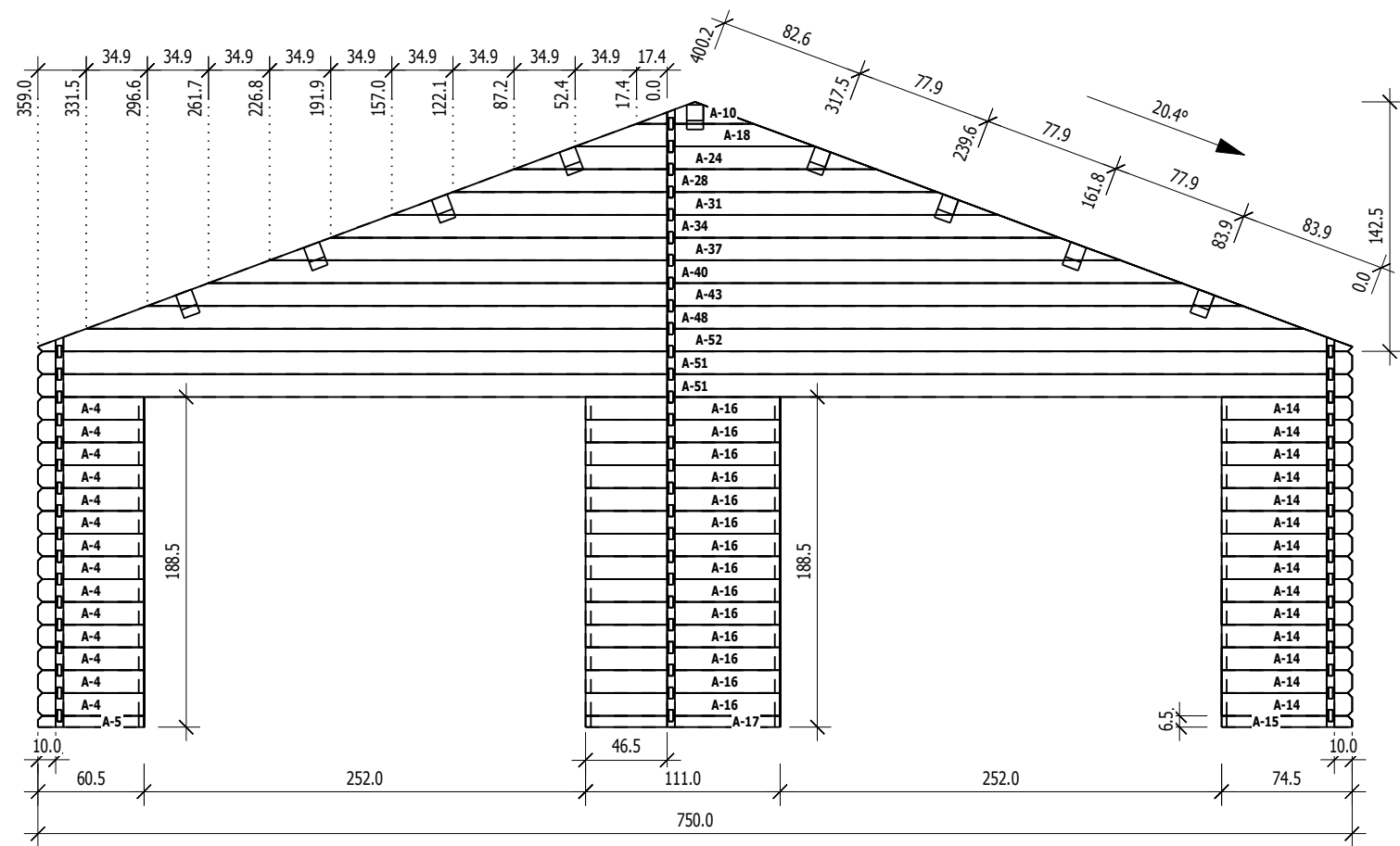
Grundrahmenplan

4,5

Grundrahmenplan

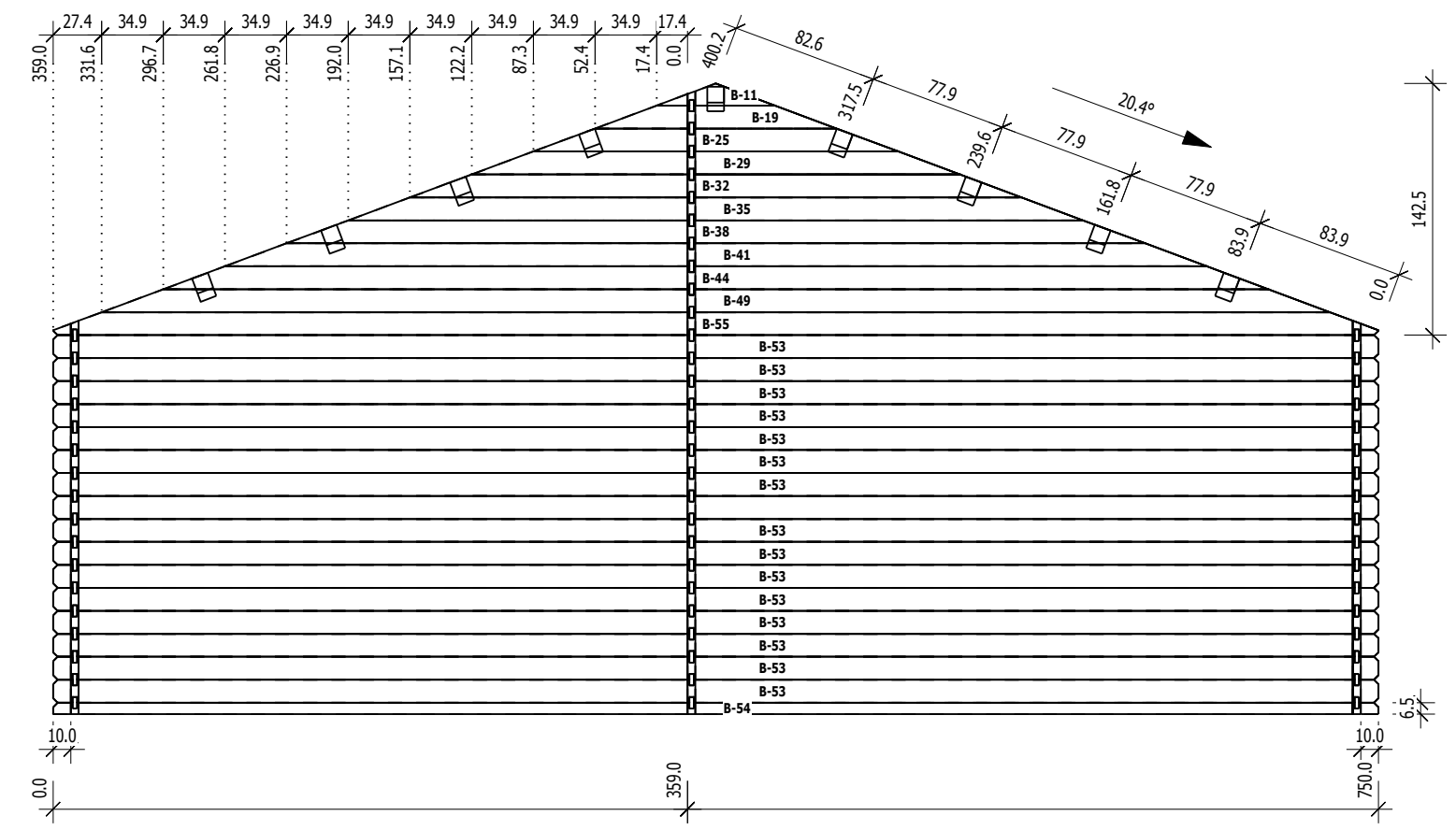
4,5

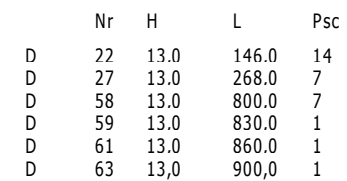
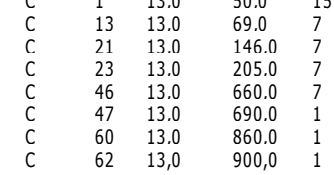


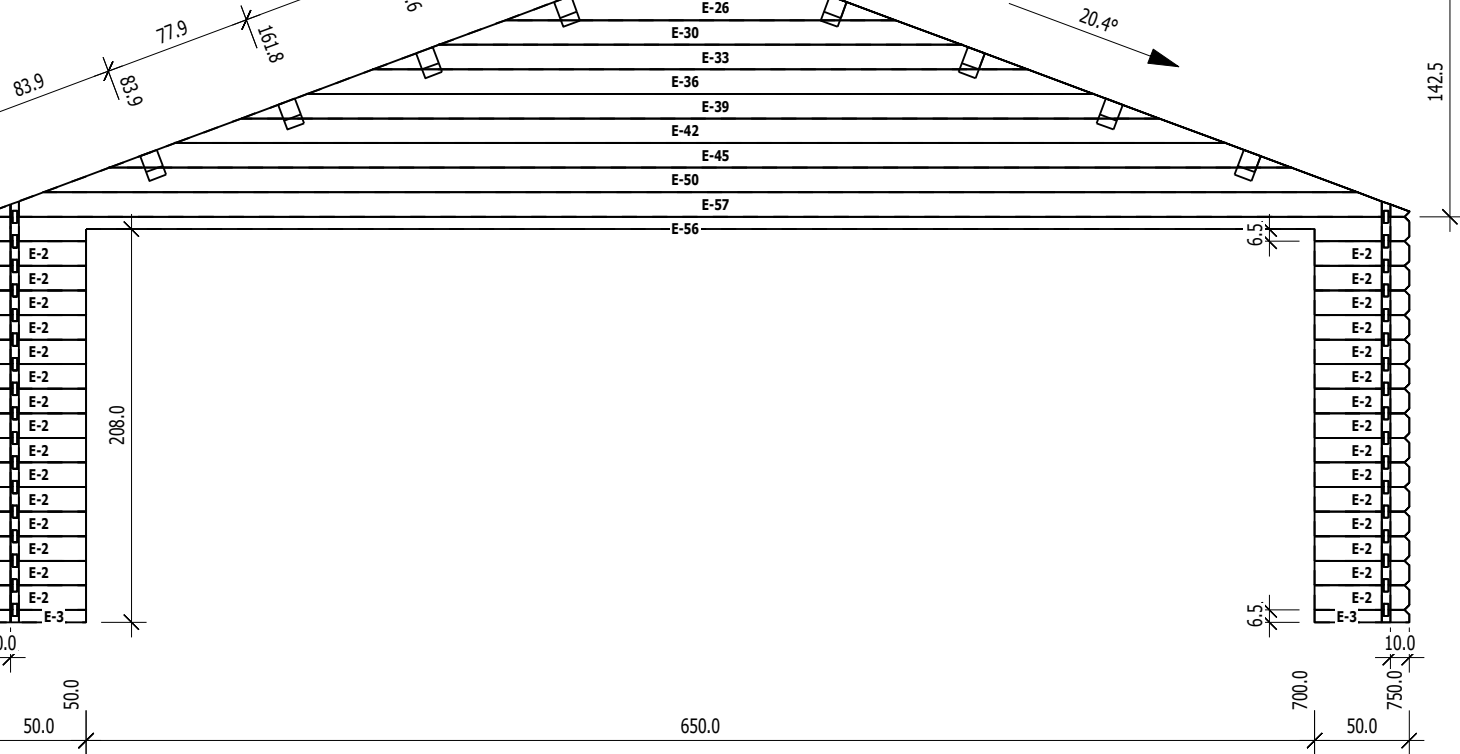


	Nr	H	L	Psc
A	4	13.0	60.5	14
A	5	6.5	60.5	1
A	10	12.5	66.9	1
A	14	13.0	74.5	14
A	15	6.5	74.5	1
A	16	13.0	111.0	14
A	17	6.5	111.0	1
A	18	13.0	136.7	1
A	24	13.0	206.5	1
A	28	13.0	276.3	1
A	31	13.0	346.1	1
A	34	13.0	415.9	1
A	37	13.0	485.7	1
A	40	13.0	555.5	1
A	43	13.0	625.3	1
A	48	13.0	695.1	1
A	51	13.0	750.0	2
A	52	13.0	750.0	1

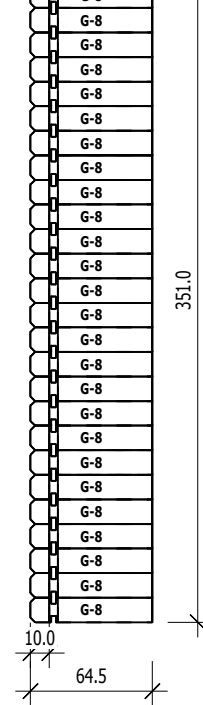
	Nr	H	L	Psc
B	11	12.5	66.9	1
B	19	13.0	136.7	1
B	25	13.0	206.5	1
B	29	13.0	276.3	1
B	32	13.0	346.1	1
B	35	13.0	415.9	1
B	38	13.0	485.7	1
B	41	13.0	555.5	1
B	44	13.0	625.3	1
B	49	13.0	695.1	1
B	53	13.0	750.0	16
B	54	6.5	750.0	1
B	55	13.0	750.0	1







	Nr	H	L	Psc
E	2	13.0	50.0	30
E	3	6.5	50.0	2
E	12	12.5	66.9	1
E	20	13.0	136.7	1
E	26	13.0	206.5	1
E	30	13.0	276.3	1
E	33	13.0	346.1	1
E	36	13.0	415.9	1
E	39	13.0	485.7	1
E	42	13.0	555.5	1
E	45	13.0	625.3	1
E	50	13.0	695.1	1
E	56	13.0	750.0	1
E	57	13,0	750,0	1



	Nr	H	L	Psc
G	8	13.0	64.5	26
G	9	13,0	64,5	1