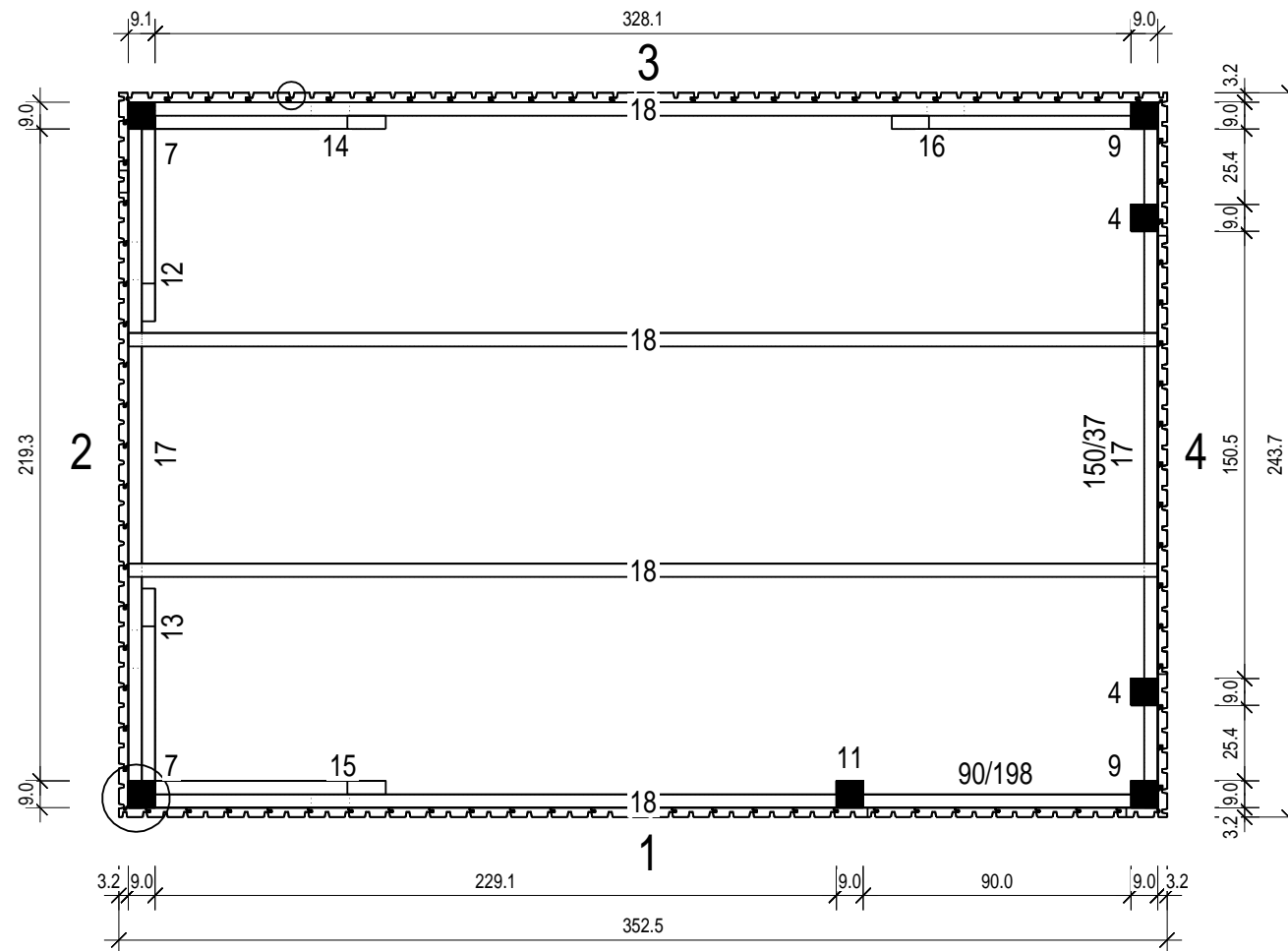
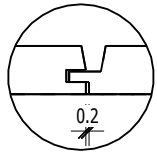


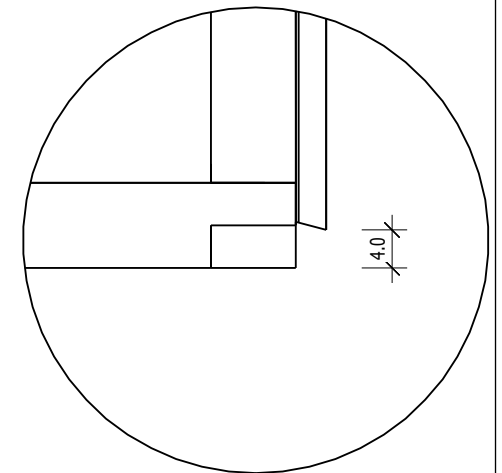
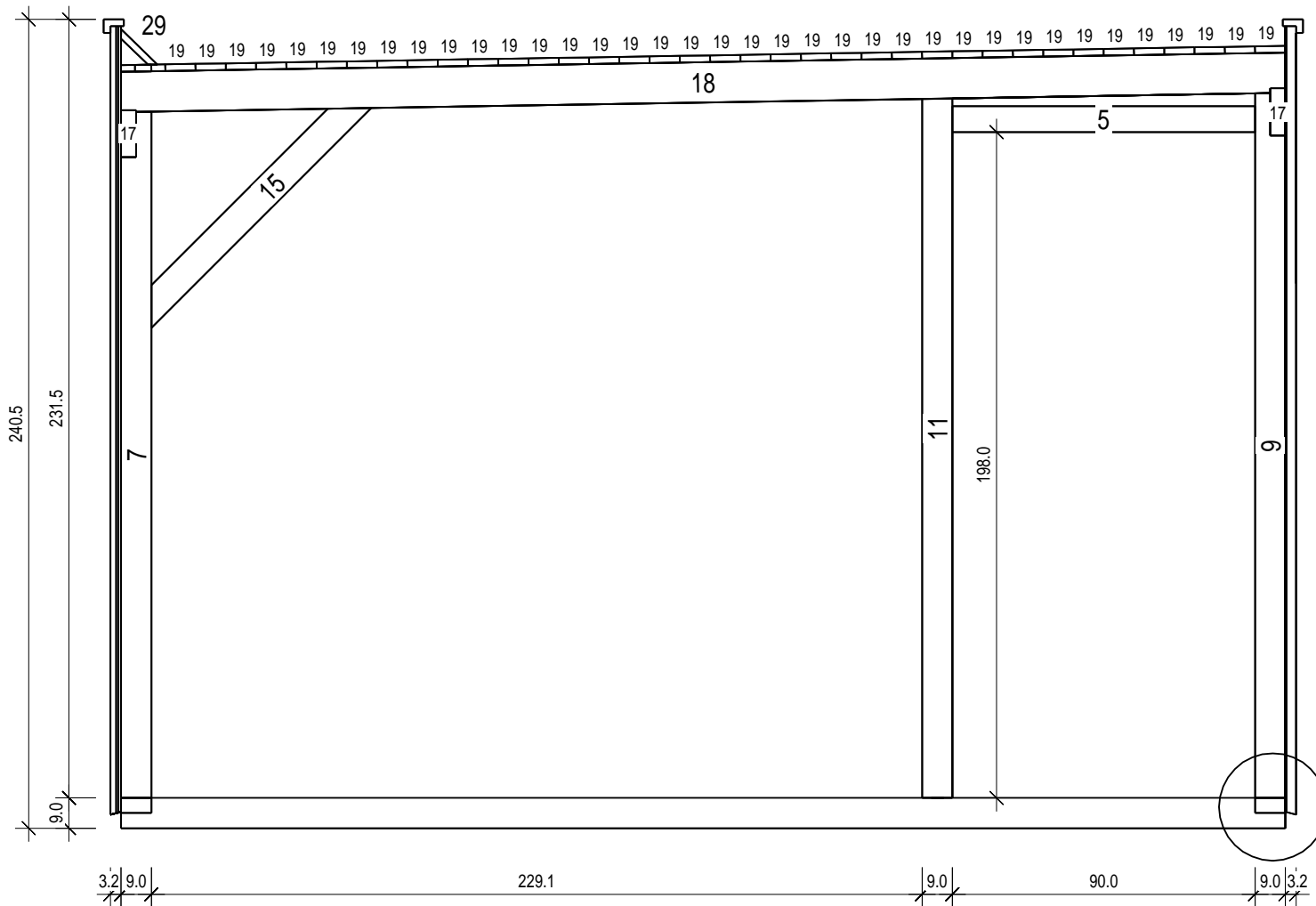
Bemerkung: die Ansicht von Turen, Fenster und anderen Teilen kann abweichen von diesem Bild

Technical drawing of a circular mechanical part. The drawing shows a cross-section of a circular component with a central rectangular feature. Dimensions are indicated as follows:

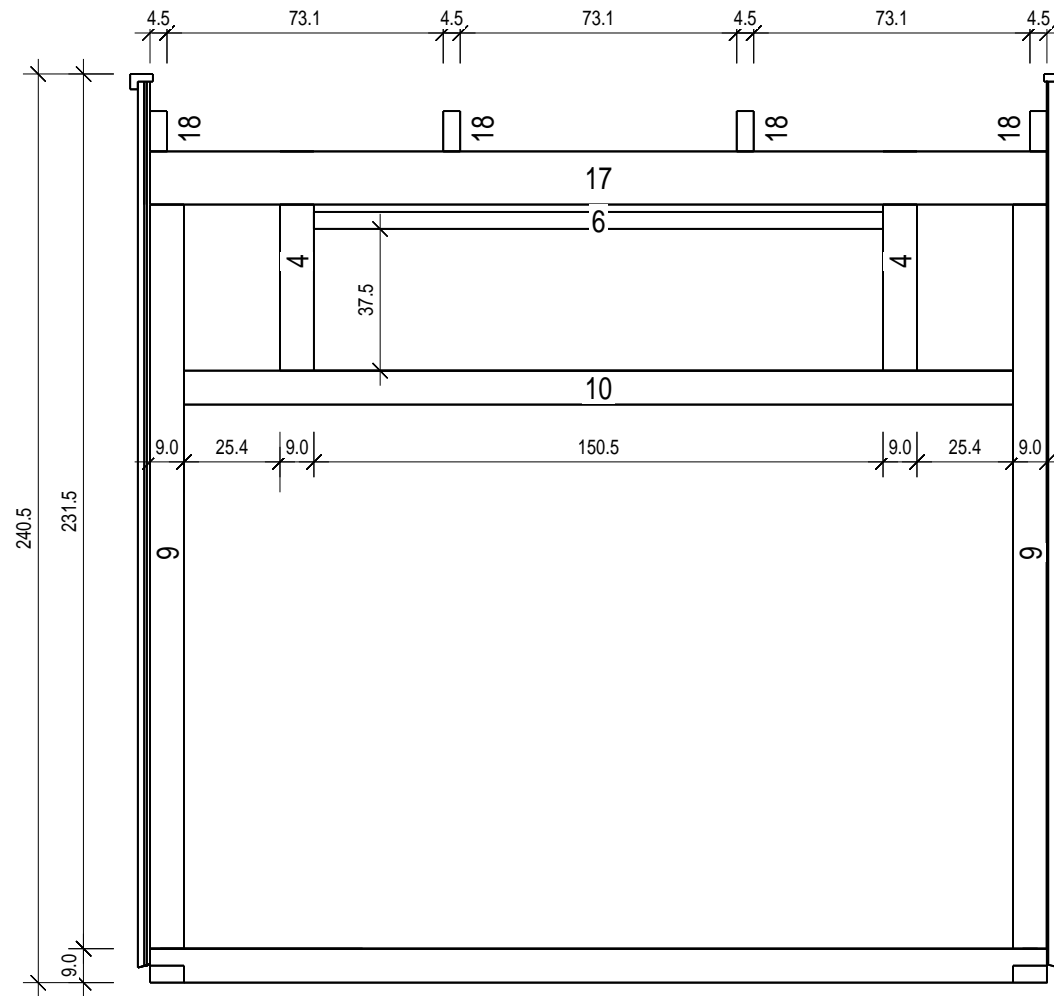
- Overall diameter: 10.4
- Inner diameter: 9.1
- Top flange thickness: 3.2
- Top flange width: 0.2
- Bottom flange thickness: 0.2
- Bottom flange width: 0.2



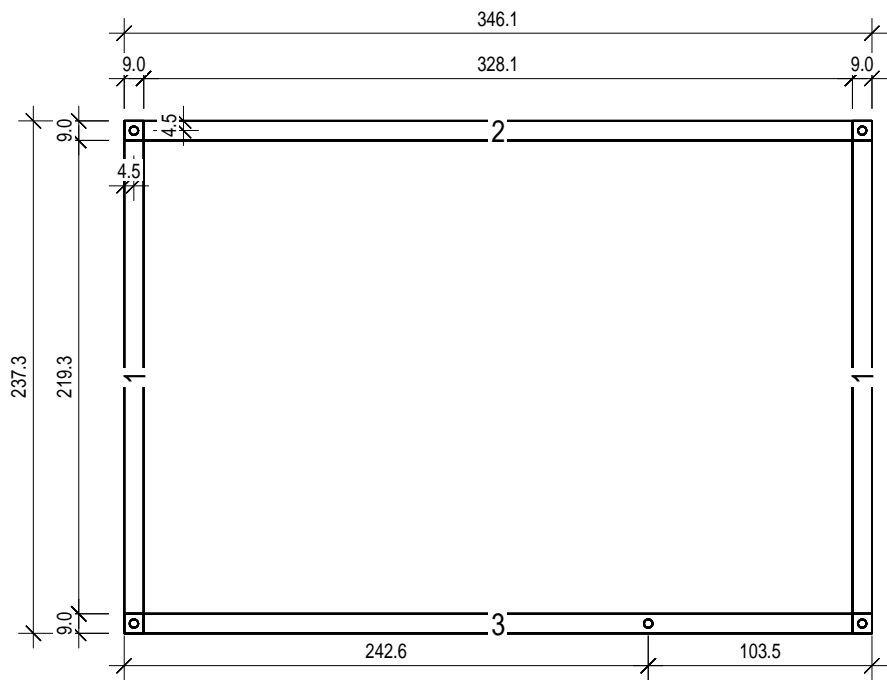
# Schnitt 1



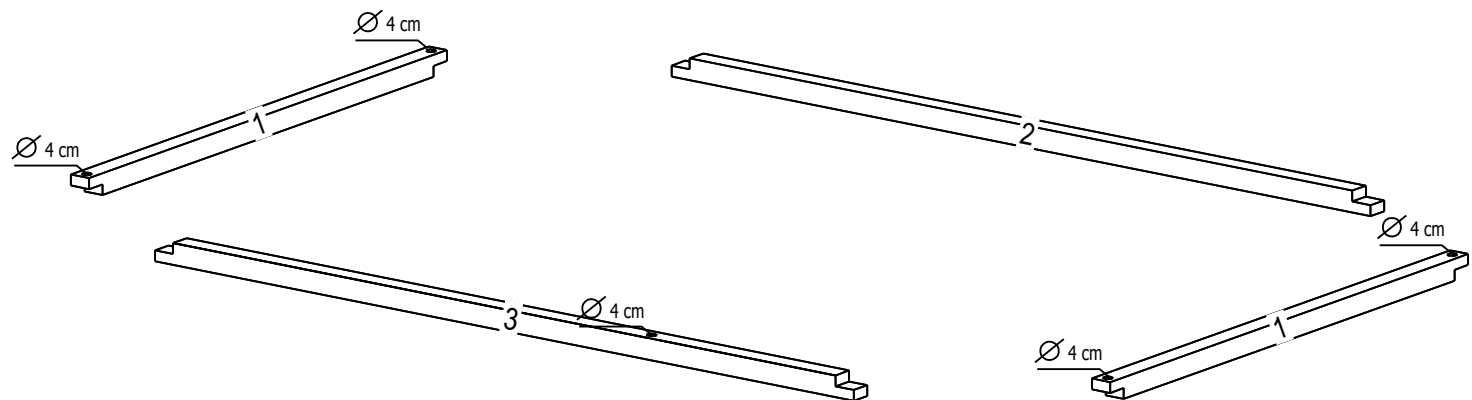
# Schnitt 2

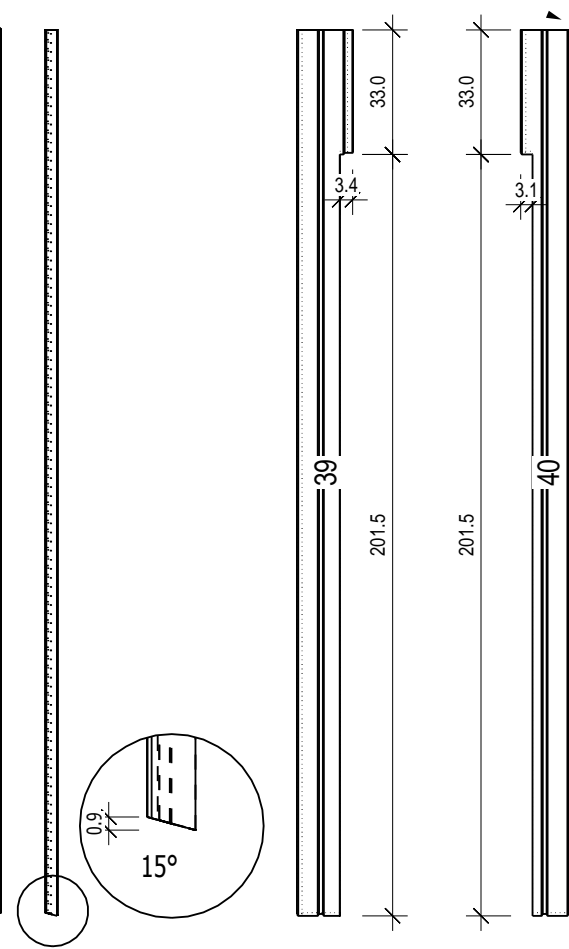
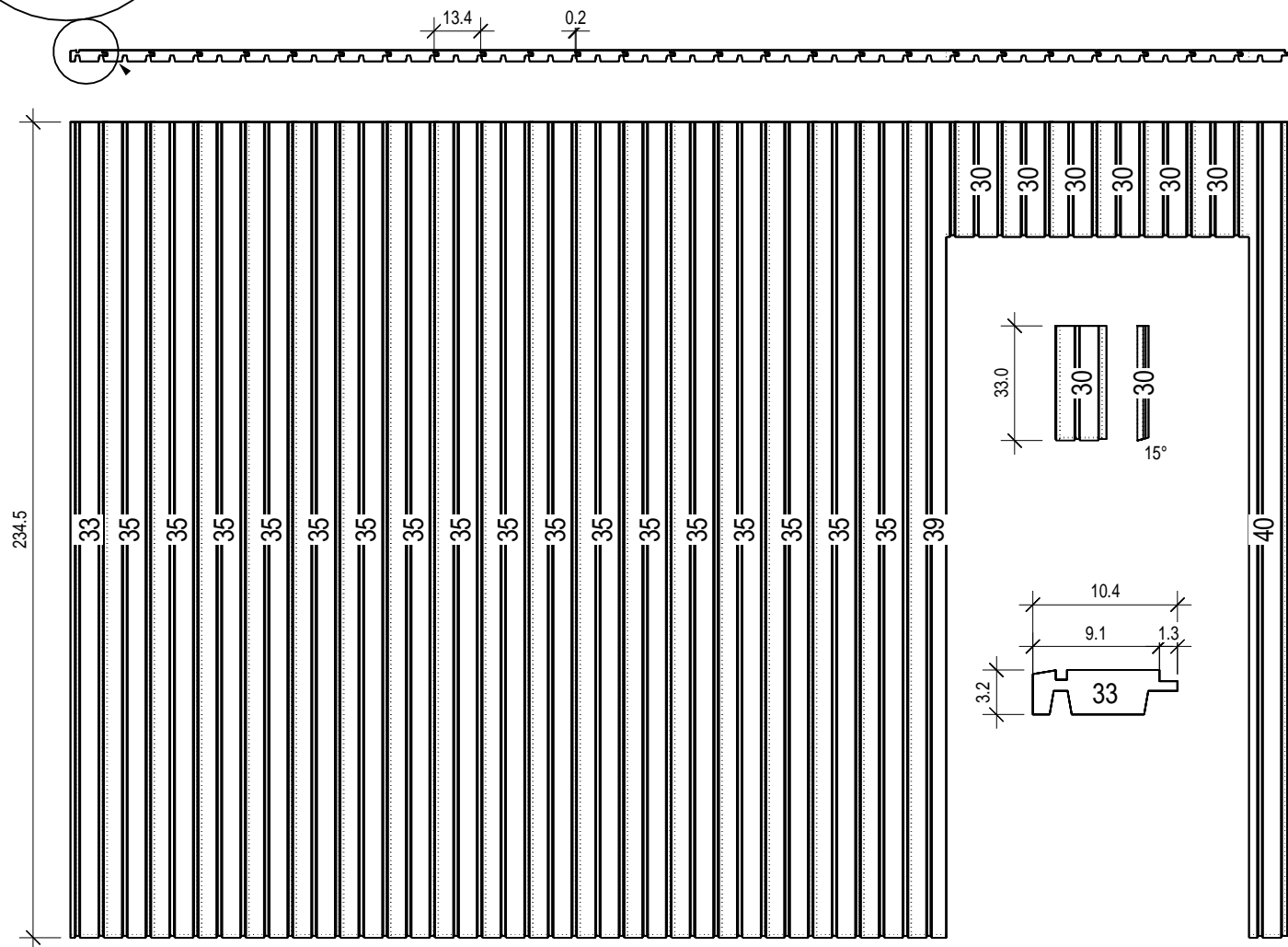


# Grundrahmenplan

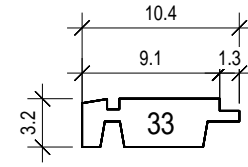
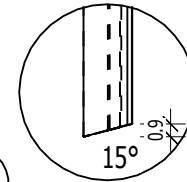
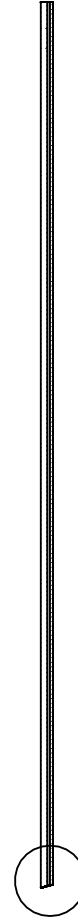
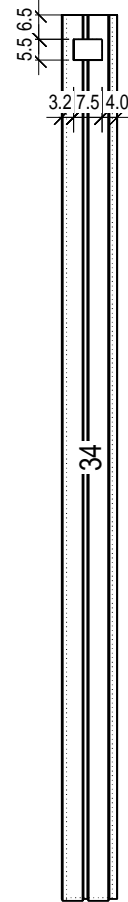
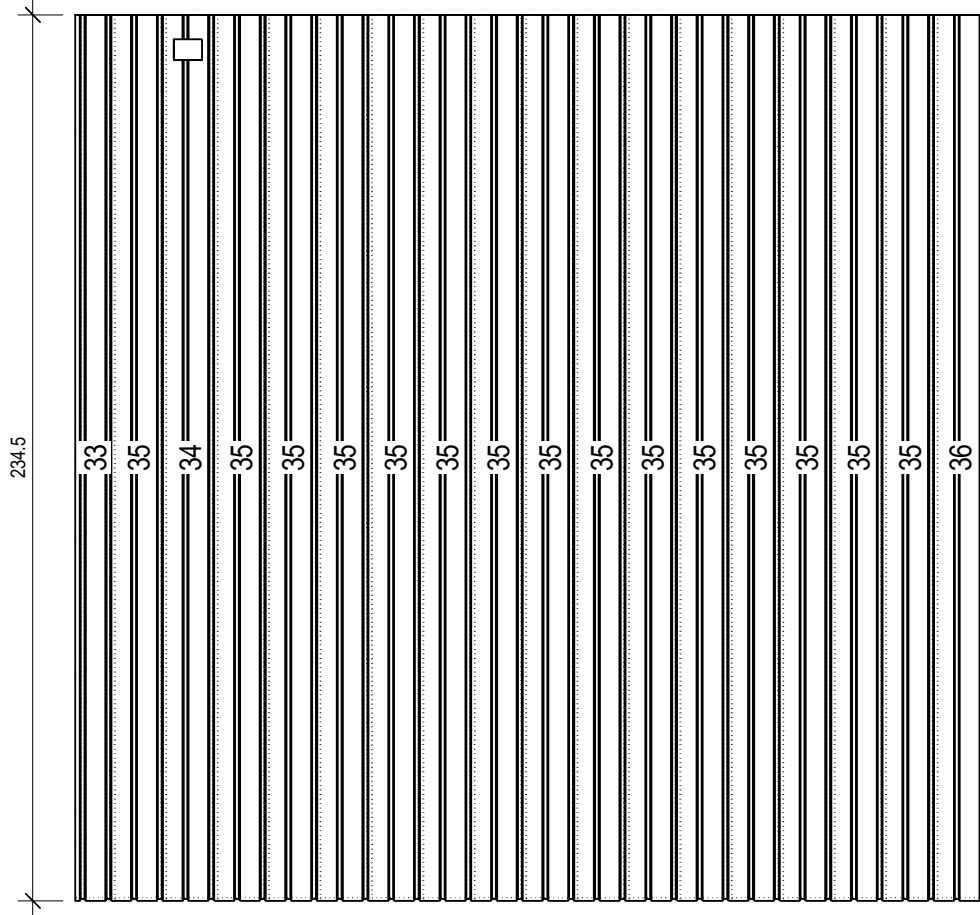
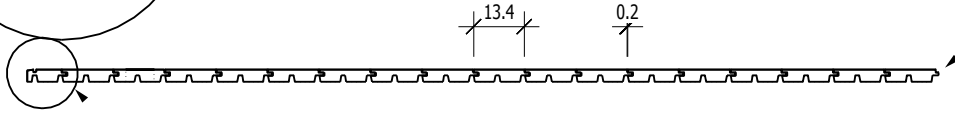
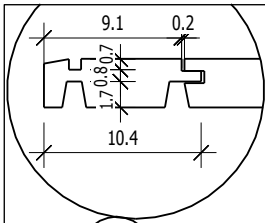


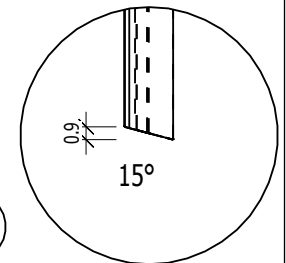
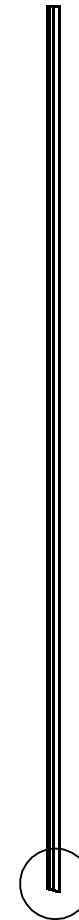
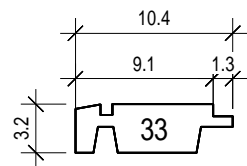
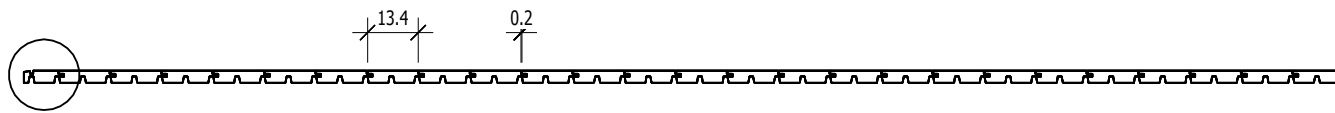
Nr.	B	H	L	Psc
	[cm]	[cm]	[cm]	
1	9,0	9,0	237,3	2
2	9,0	9,0	346,1	1
3	9,0	9,0	346,1	1





# Wand Nr-2







Technical drawing of a mechanical part, likely a bracket or support, showing dimensions in millimeters (mm). The part is circular in cross-section. Key dimensions include:

- Overall width: 10.4 mm
- Top horizontal segment: 9.1 mm
- Top horizontal segment: 0.2 mm
- Vertical segment: 1.708 mm
- Vertical segment: 0.7 mm

A detail view of a keyway is shown below the main part, indicating a key slot with a width of 10.4 mm.

