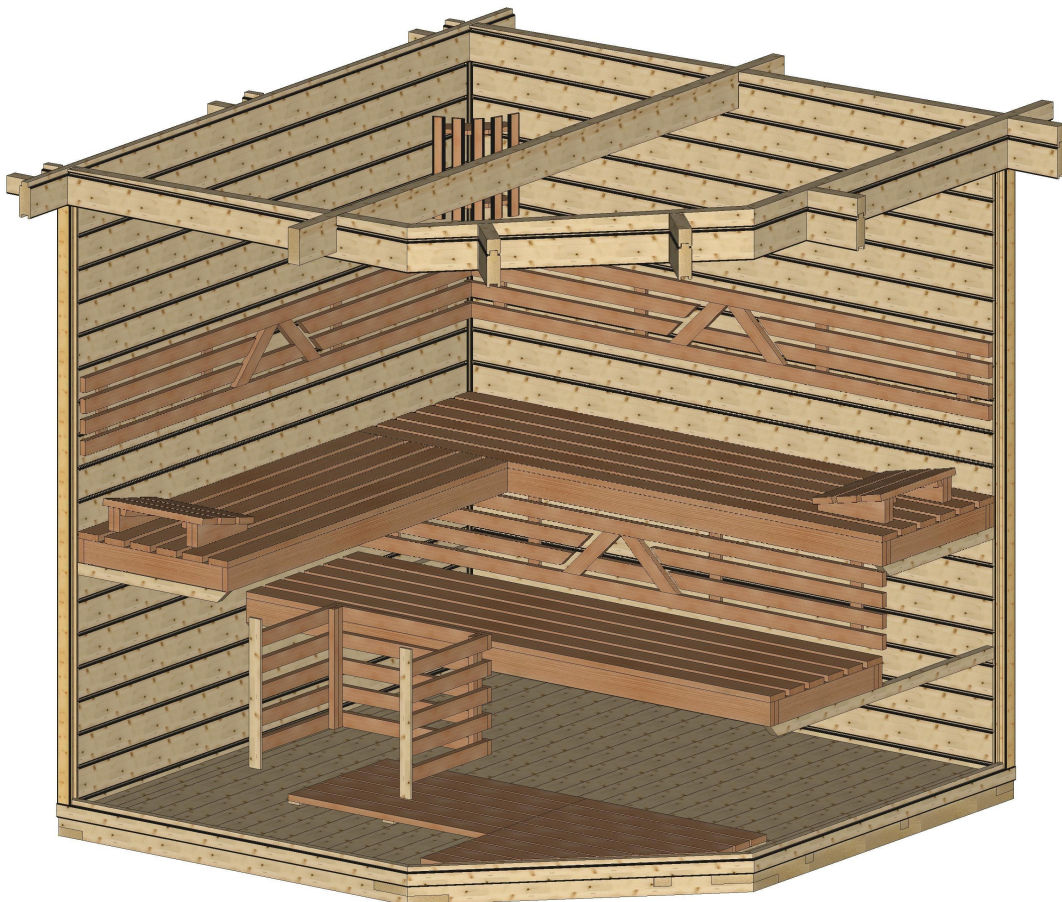
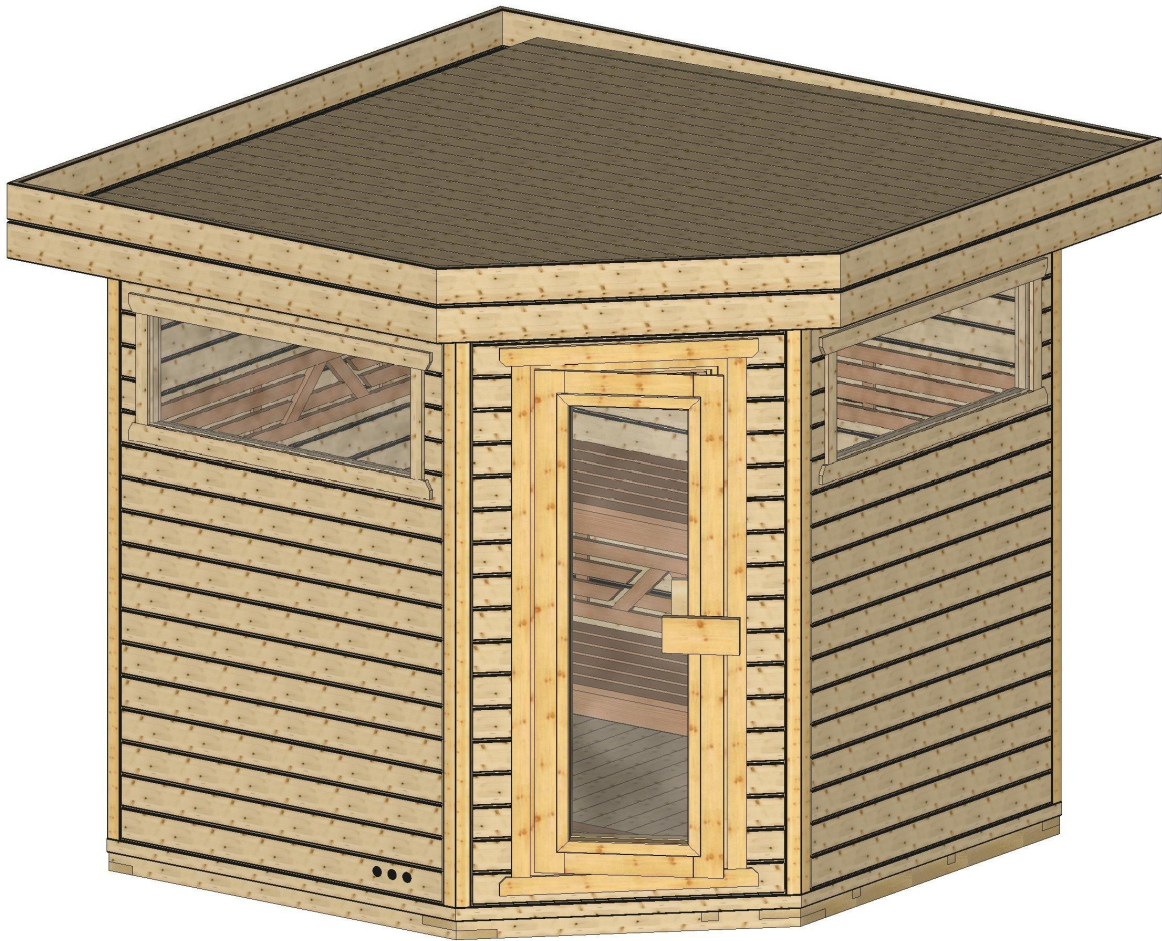
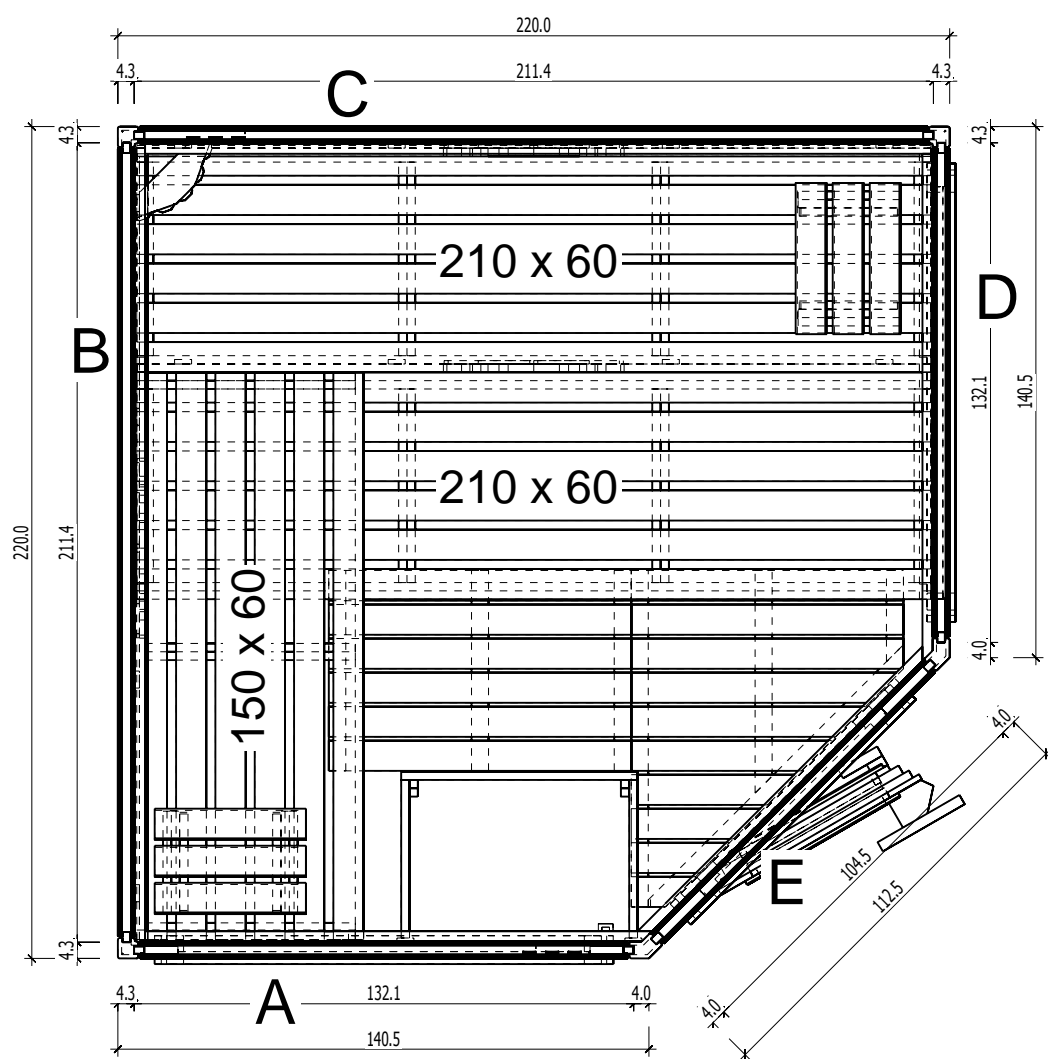
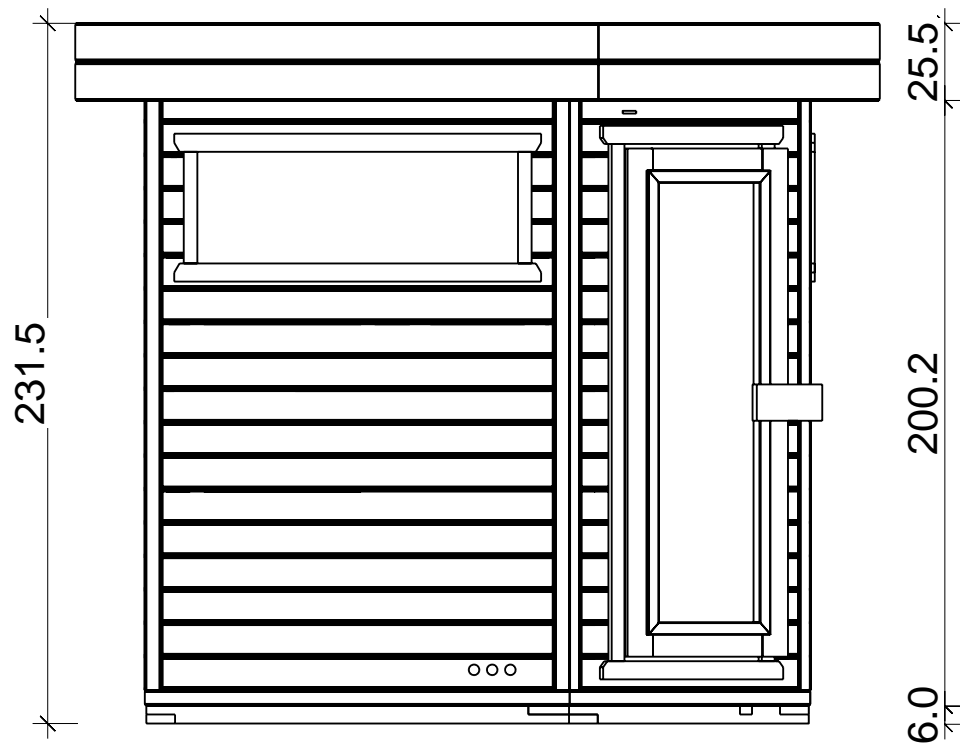
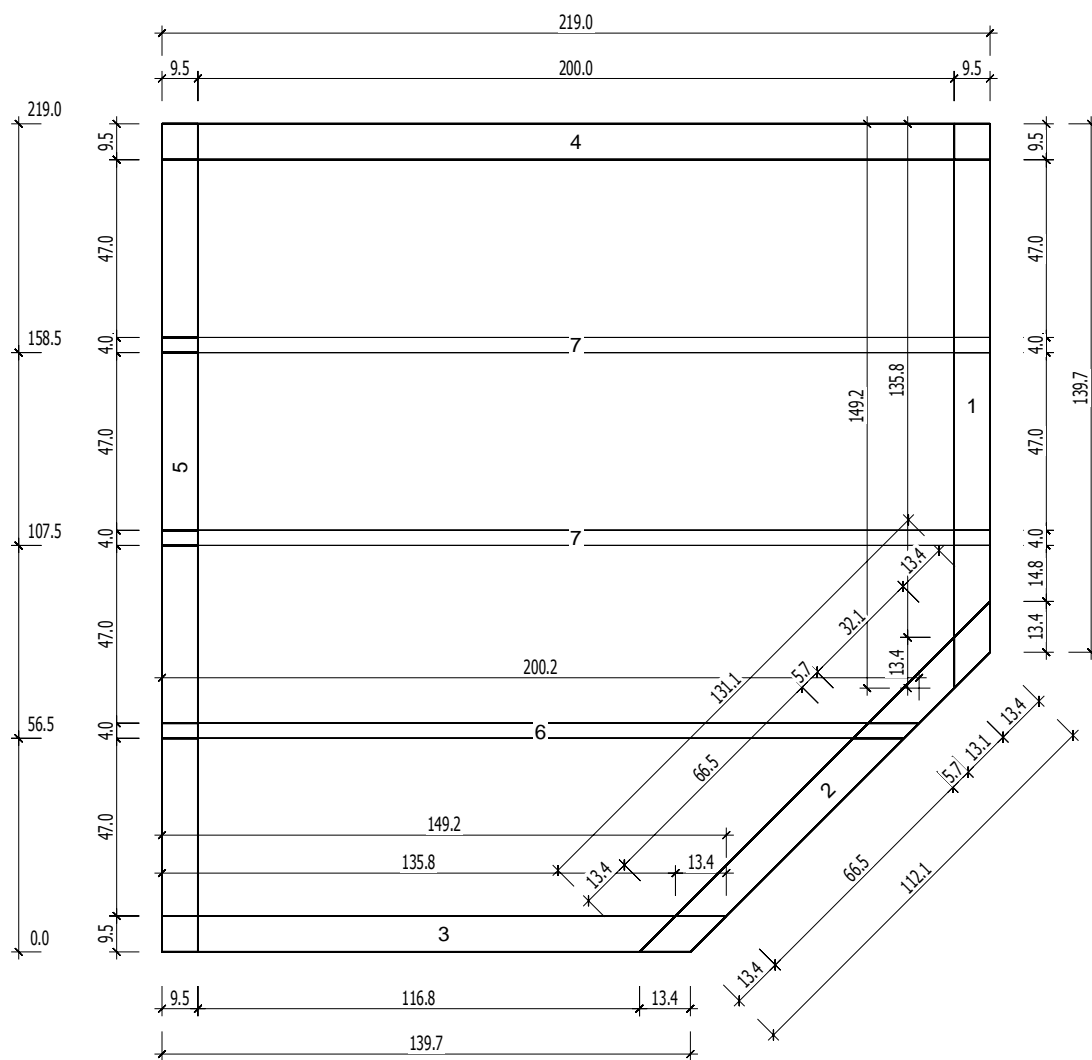


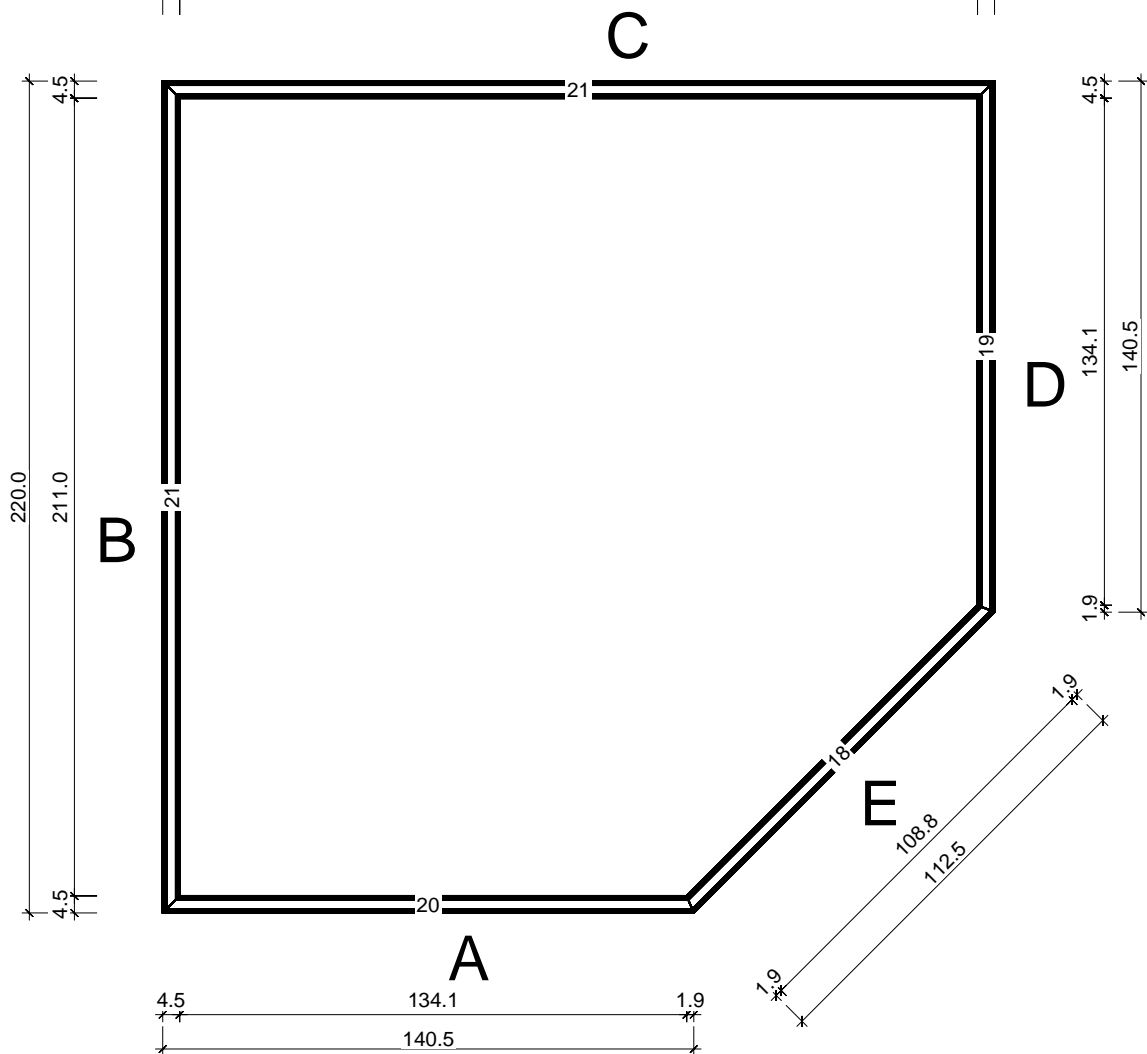
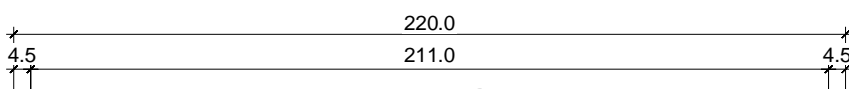
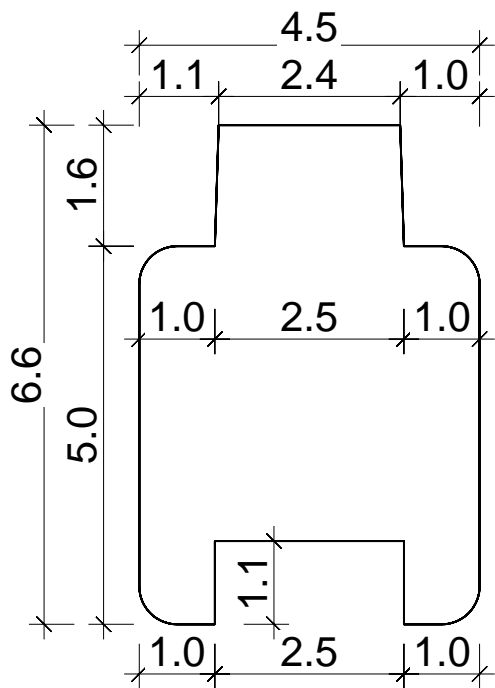
Bemerkung: die Ansicht von Türen, Fenster und anderen Teilen kann abweichen von diesem Bild





## A collection of 10 wooden beams of various lengths and shapes, some with notches or grooves, arranged on a white background. The beams are light-colored wood with visible grain and knots. They are arranged in a scattered pattern, with some having rectangular notches or grooves cut into them. The beams vary in length and width, and some have stepped ends.





# Dachelemente

