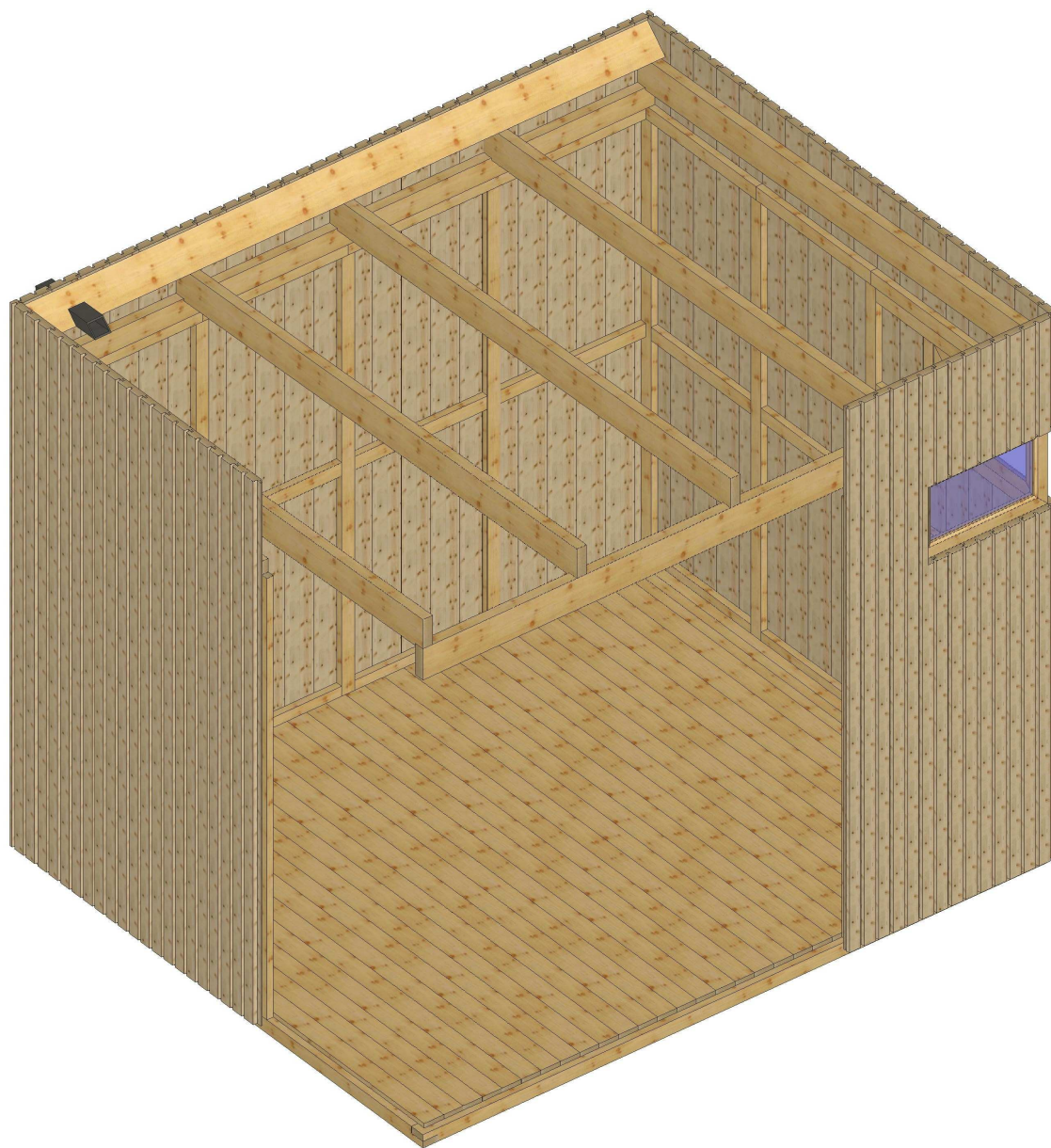
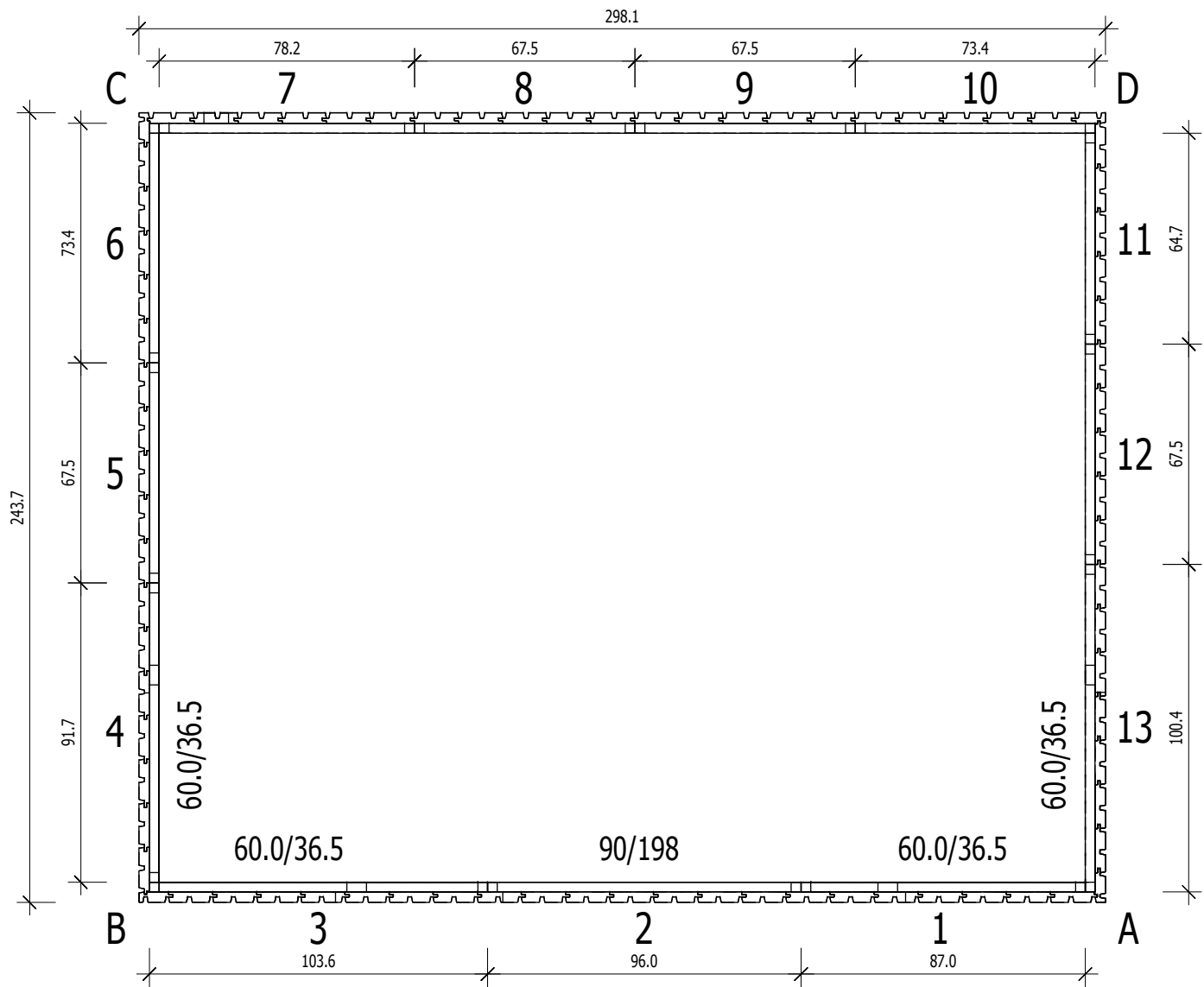


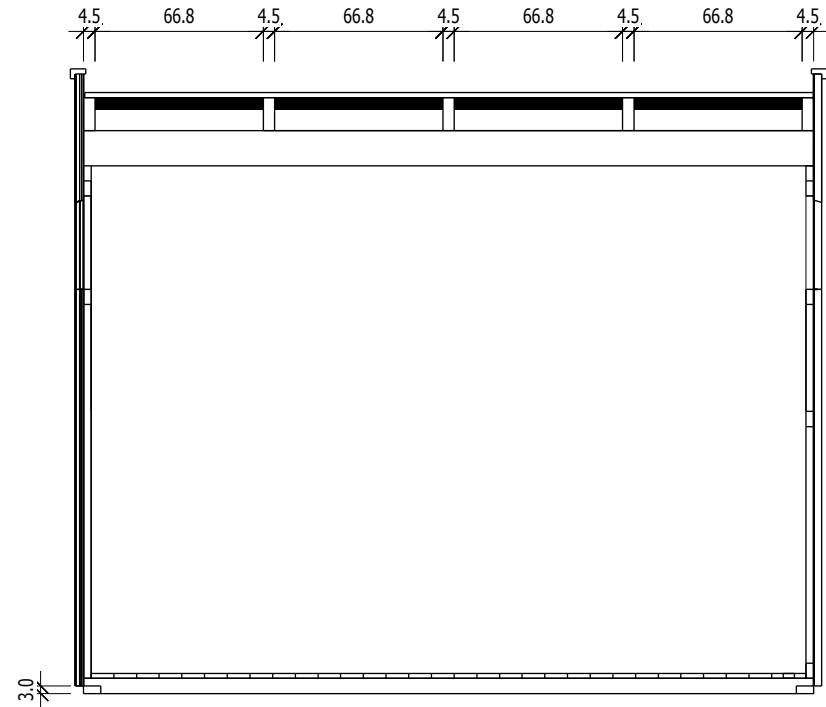
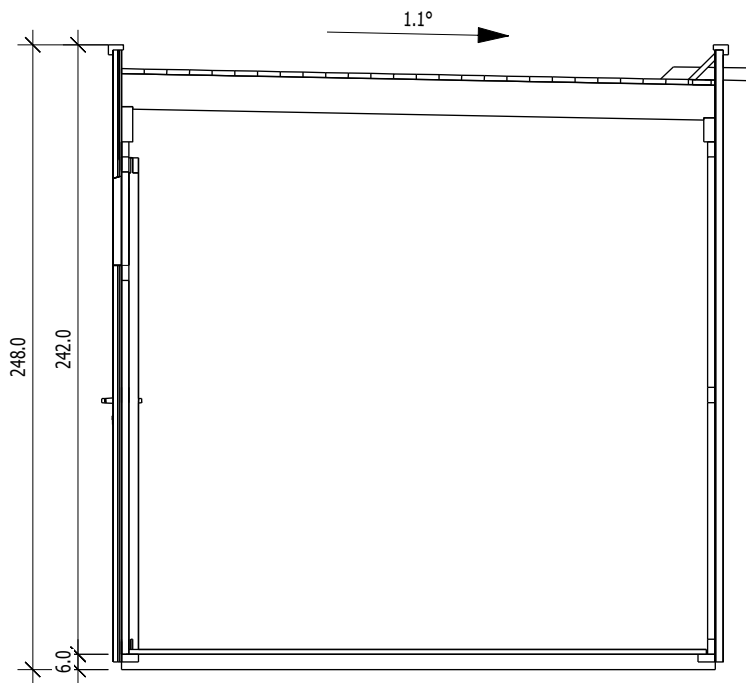
Bemerkung: die Ansicht von Turen, Fenster und anderen Teilen kann abweichen von diesem Bild

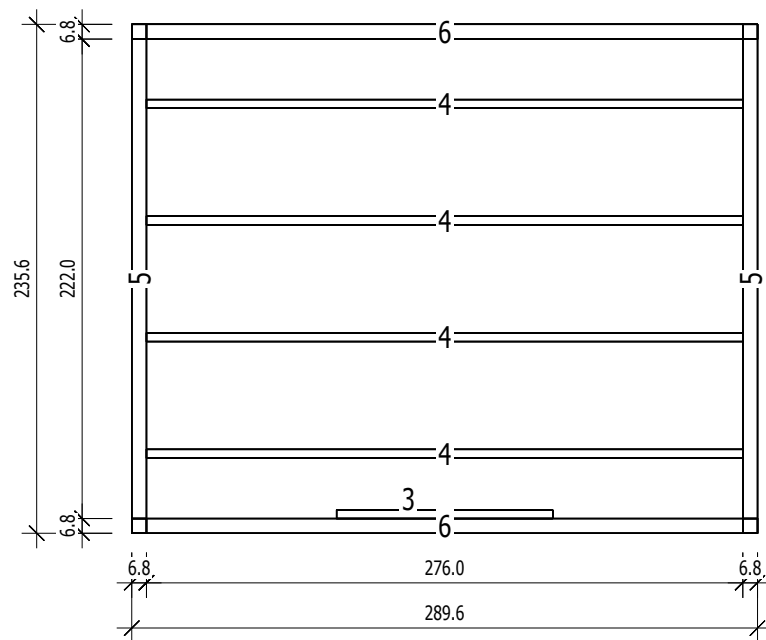


Grundriss



Schnitt





Grundrahmenplan

Nr.	B	H	L	Psc
	[cm]	[cm]	[cm]	
=====				
3	4,0	6,0	100,0	1
4	4,0	6,0	276,0	4
5	6,8	6,0	235,6	2
6	6,8	6,0	289,6	2

