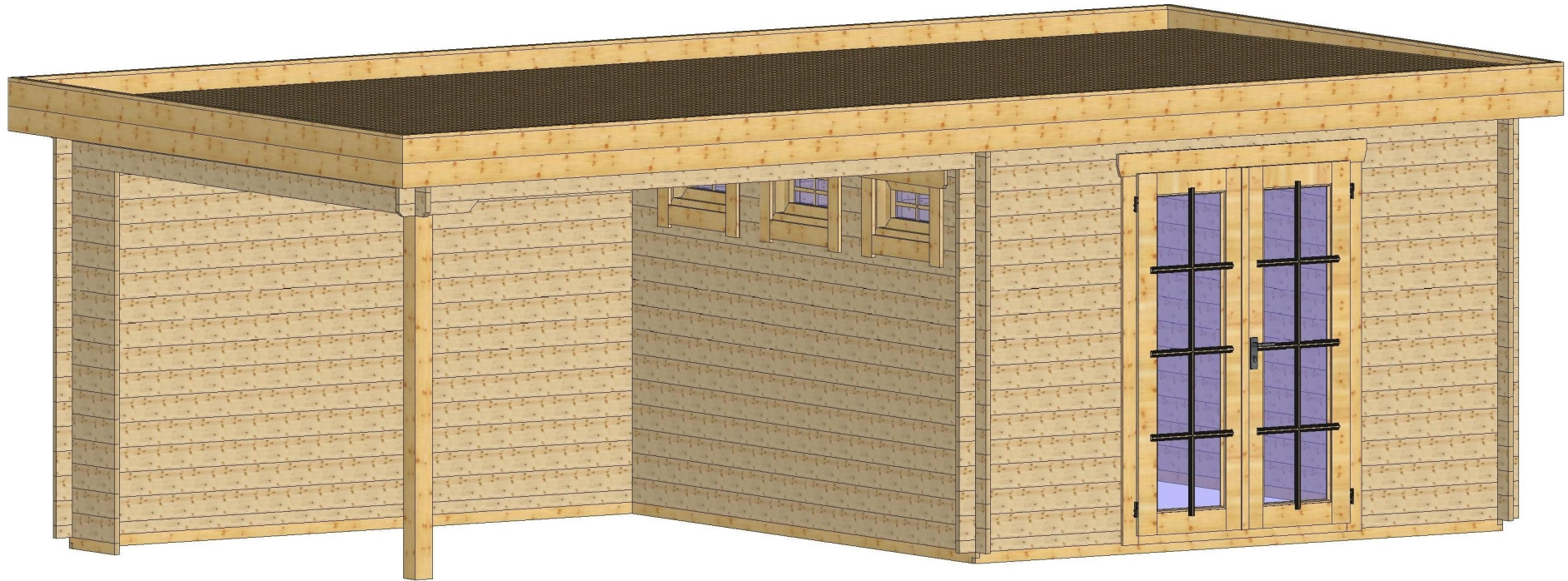


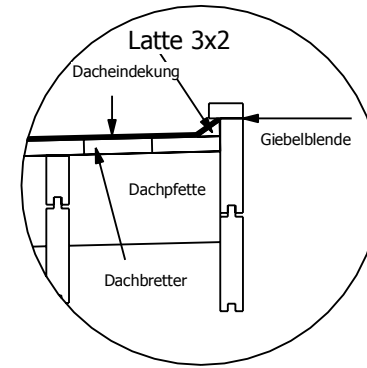
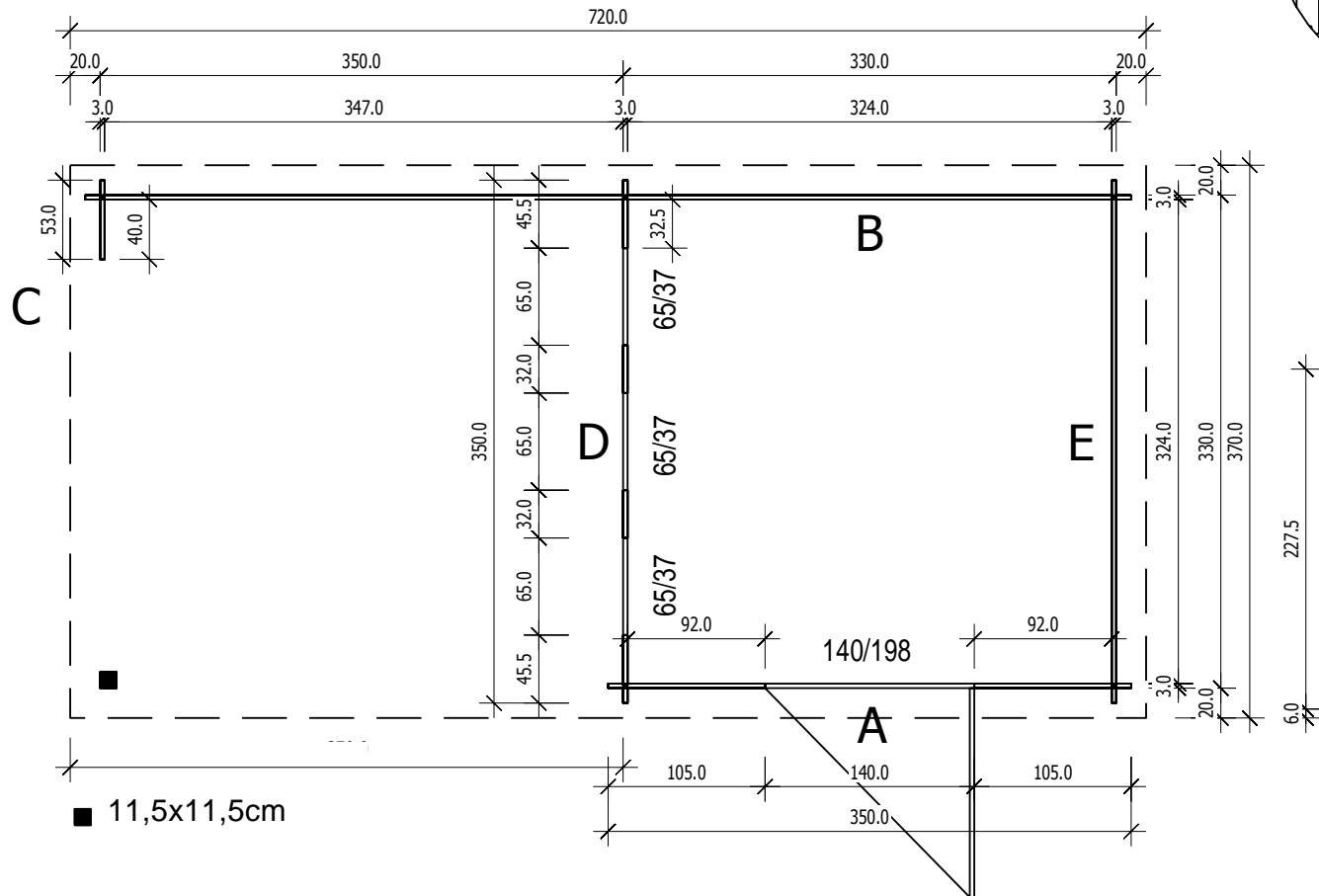
Joris-7035



Bemerkung: die Ansicht von Turen, Fenster und anderen Teilen kann abweichen von diesem Bild

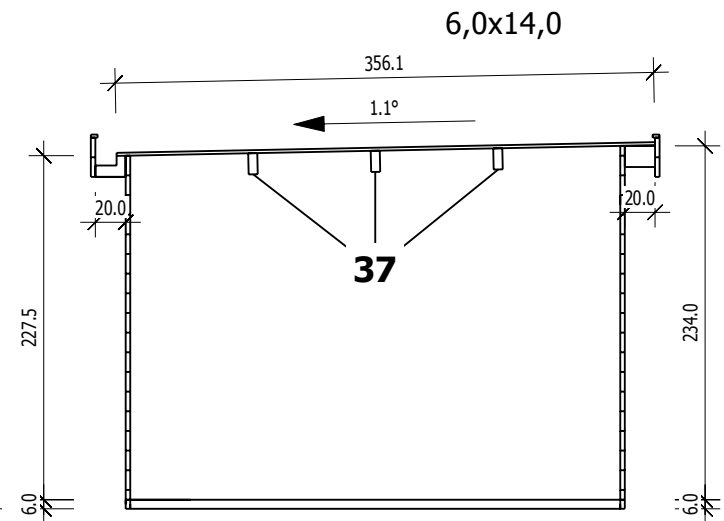
Joris-7035

Grundriss



3,0

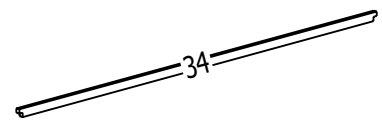
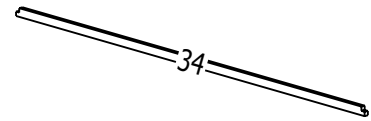
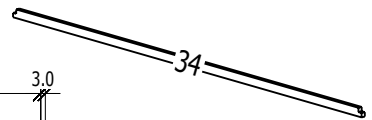
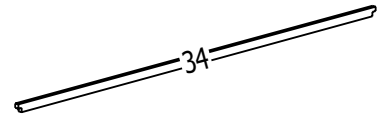
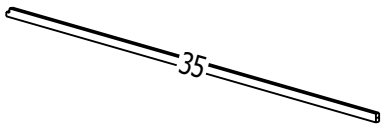
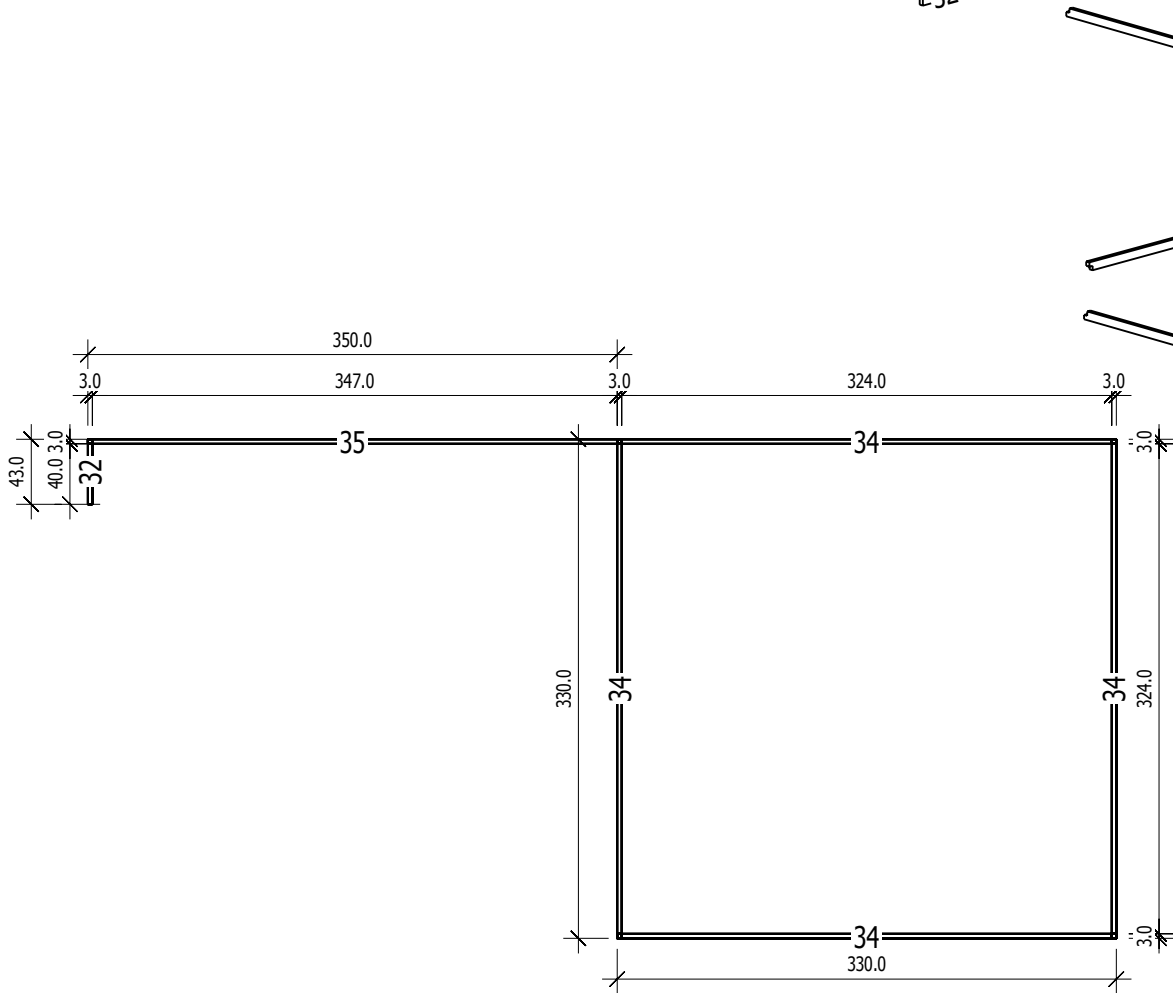
Schnitt



Grundrahmenplan

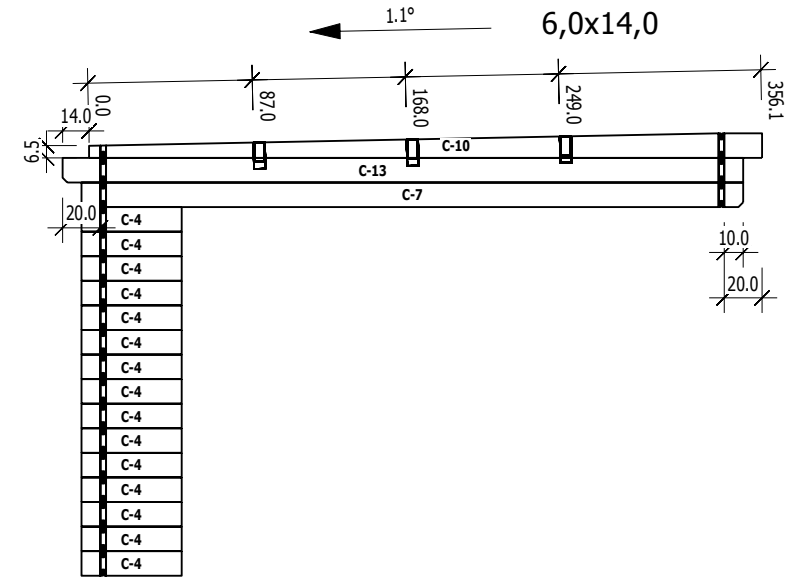
3,0

□32



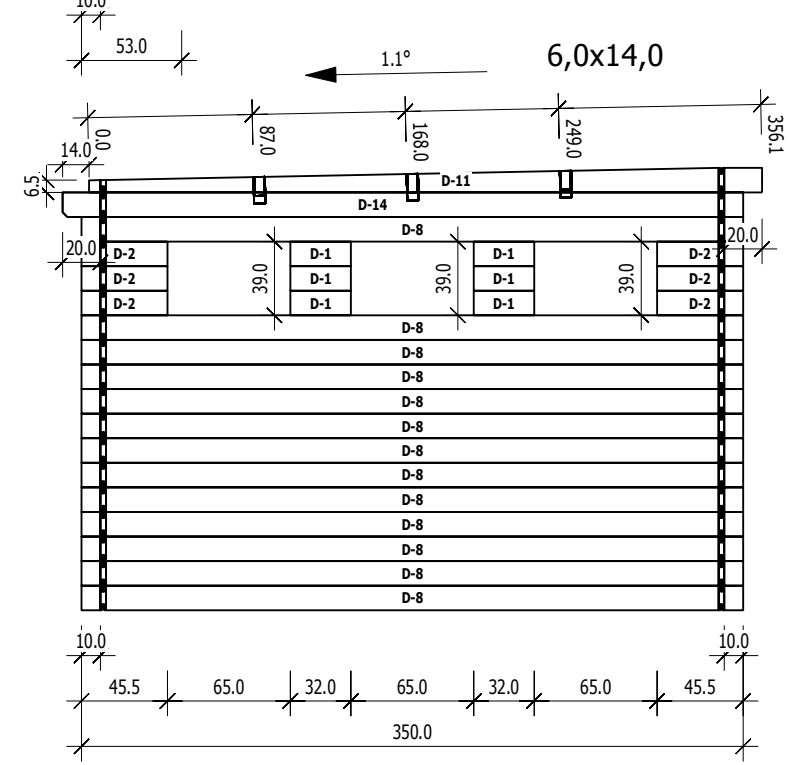
Nr.	B [cm]	H [cm]	L [cm]	Psc
32	3,0	6,0	43,0	1
34	3,0	6,0	330,0	4
35	3,0	6,0	350,0	1

C
M 1:40



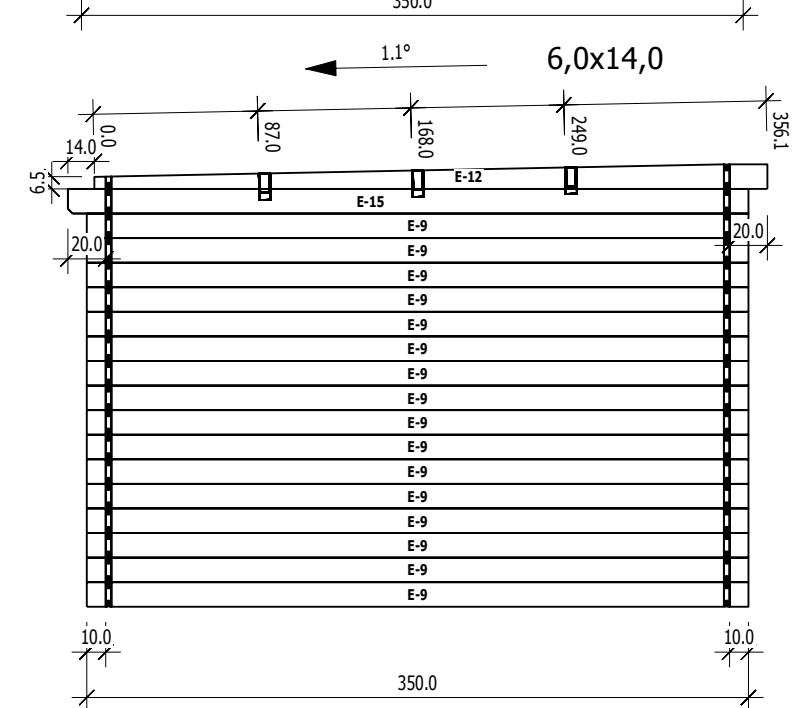
Nr	H	L	Psc
C 4	13,0	53,0	15
C 7	13,0	350,0	1
C 10	13,0	356,0	1
C 13	13,0	360,0	1

D
M 1:40



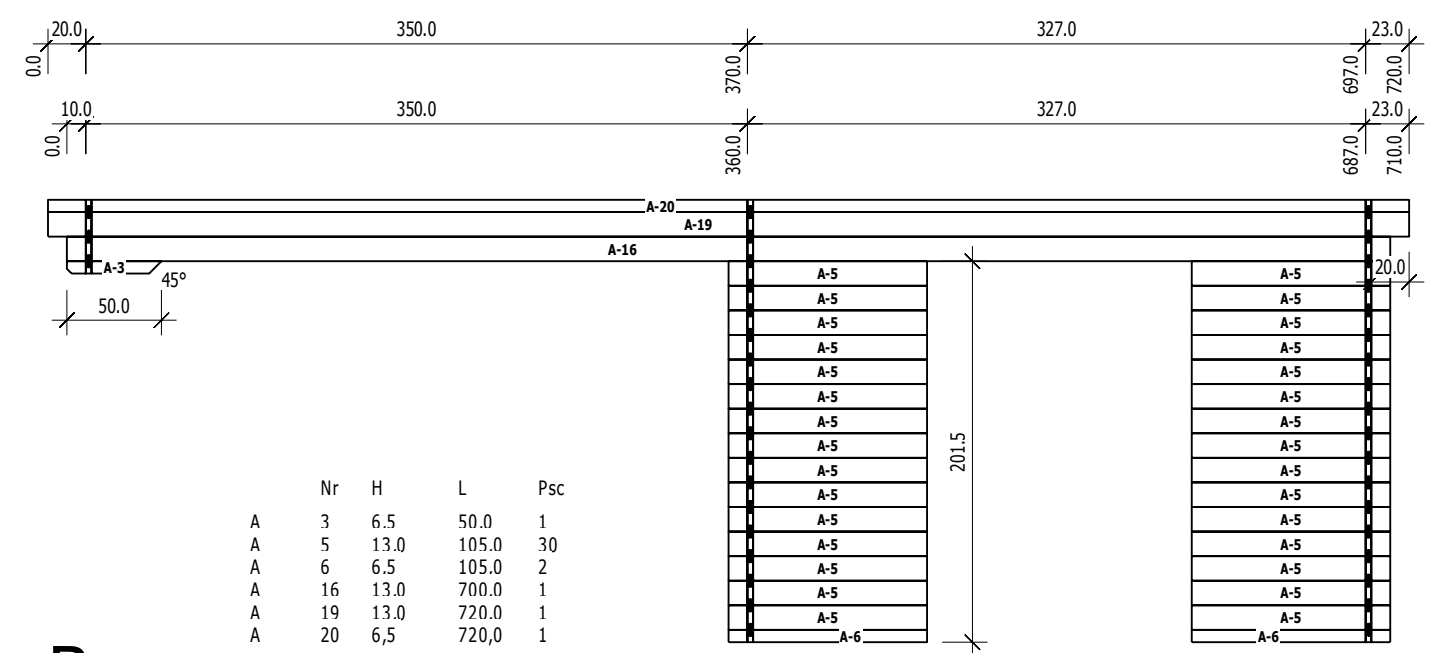
Nr	H	L	Psc
D 1	13,0	32,0	6
D 2	13,0	45,5	6
D 8	13,0	350,0	13
D 11	13,0	356,0	1
D 14	13,0	360,0	1

E
M 1:40



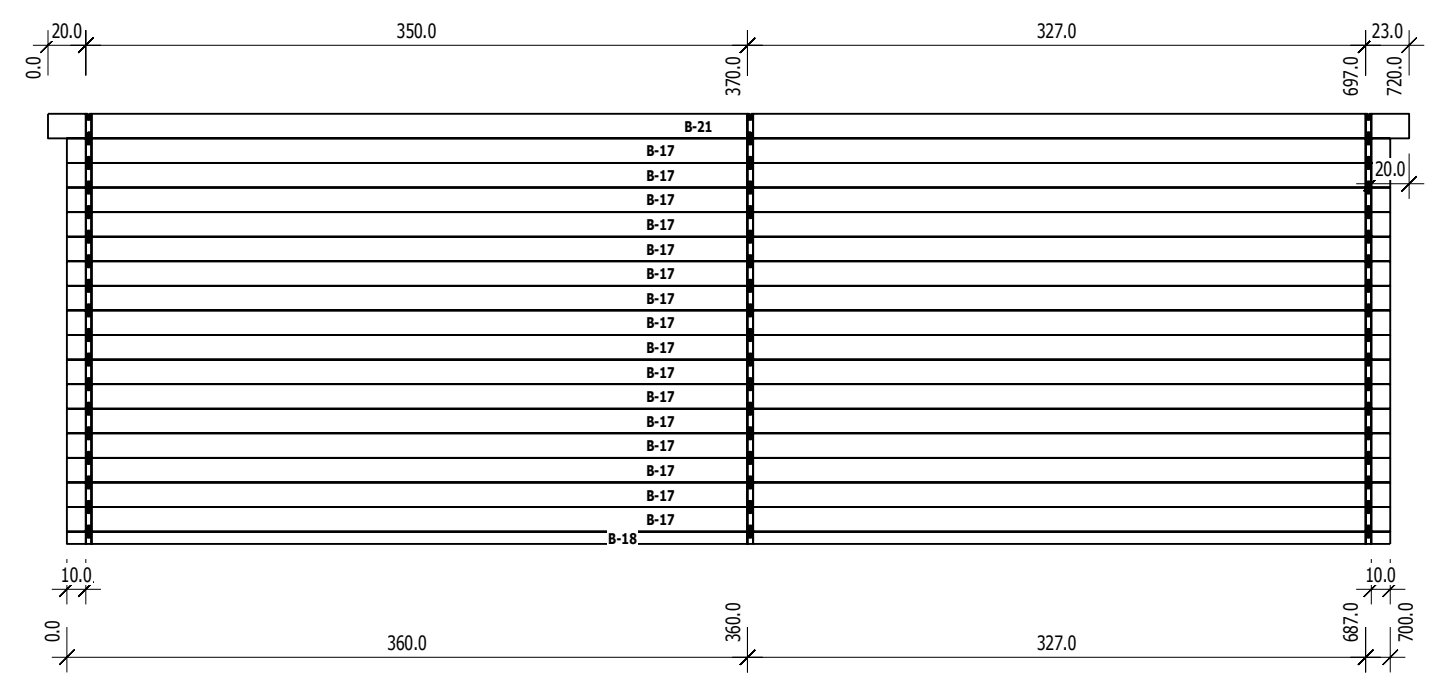
Nr	H	L	Psc
E 9	13,0	350,0	16
E 12	13,0	356,0	1
E 15	13,0	360,0	1

A
M 1:40



Nr	H	L	Psc
A 3	6,5	50,0	1
A 5	13,0	105,0	30
A 6	6,5	105,0	2
A 16	13,0	700,0	1
A 19	13,0	720,0	1
A 20	6,5	720,0	1

B
M 1:40



Nr	H	L	Psc
B 17	13,0	700,0	16
B 18	6,5	700,0	1
B 21	13,0	720,0	1