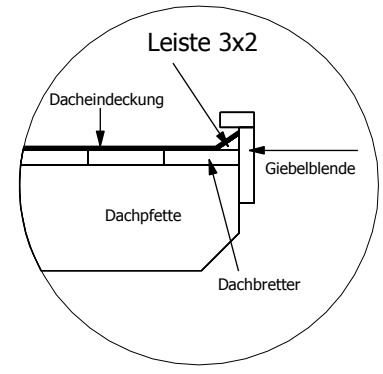
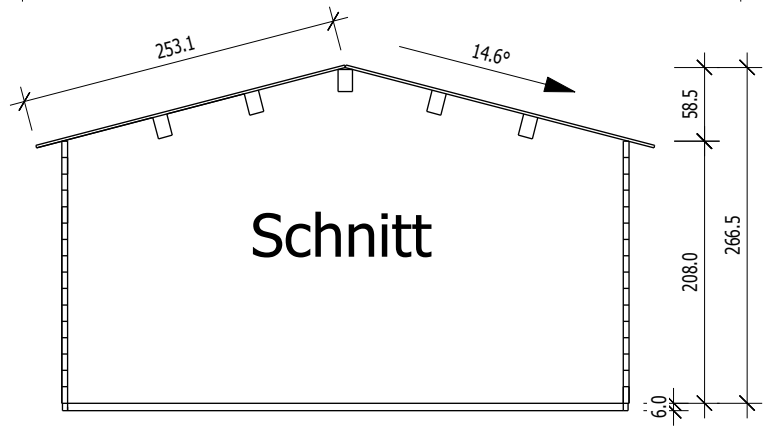
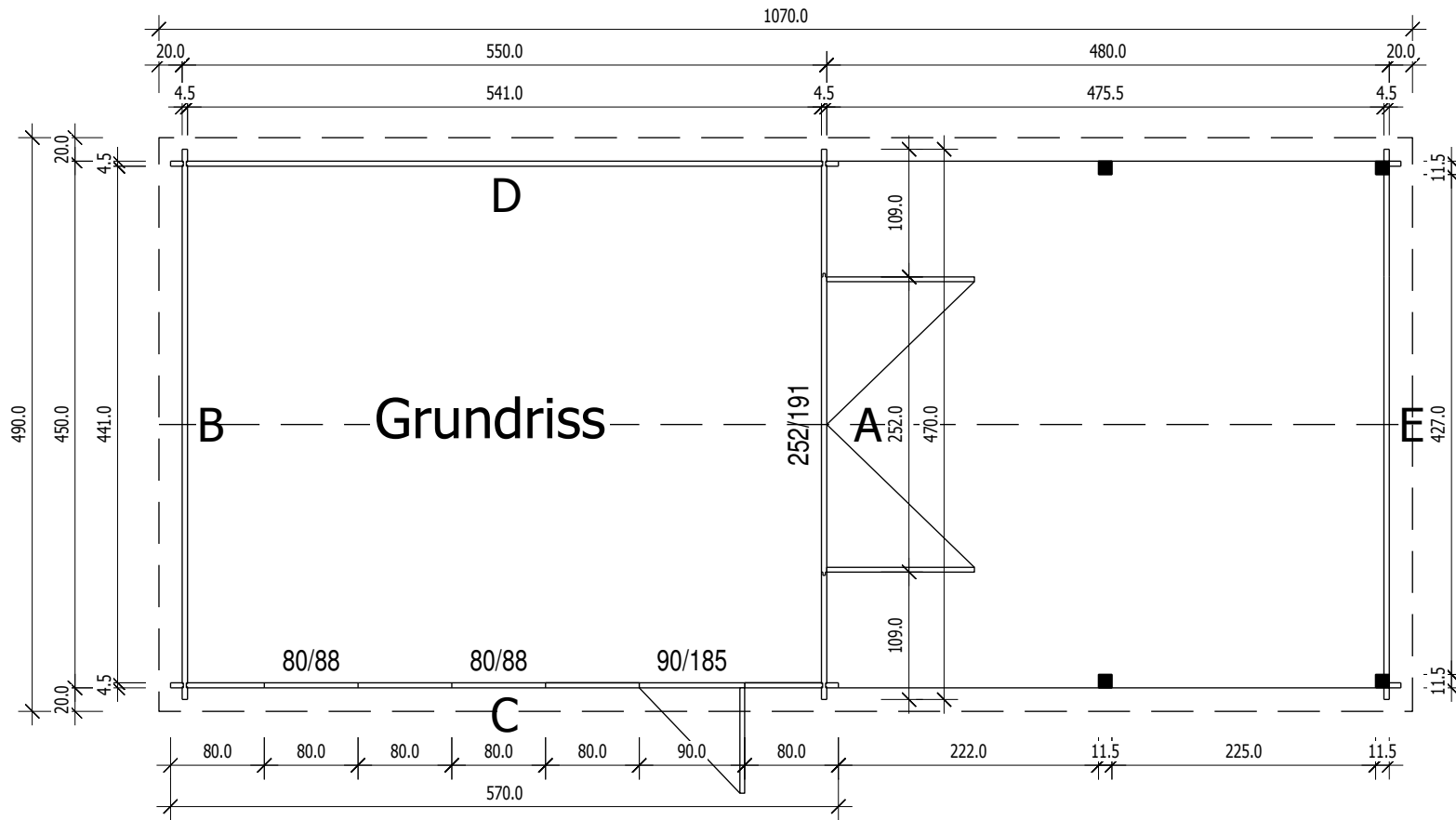


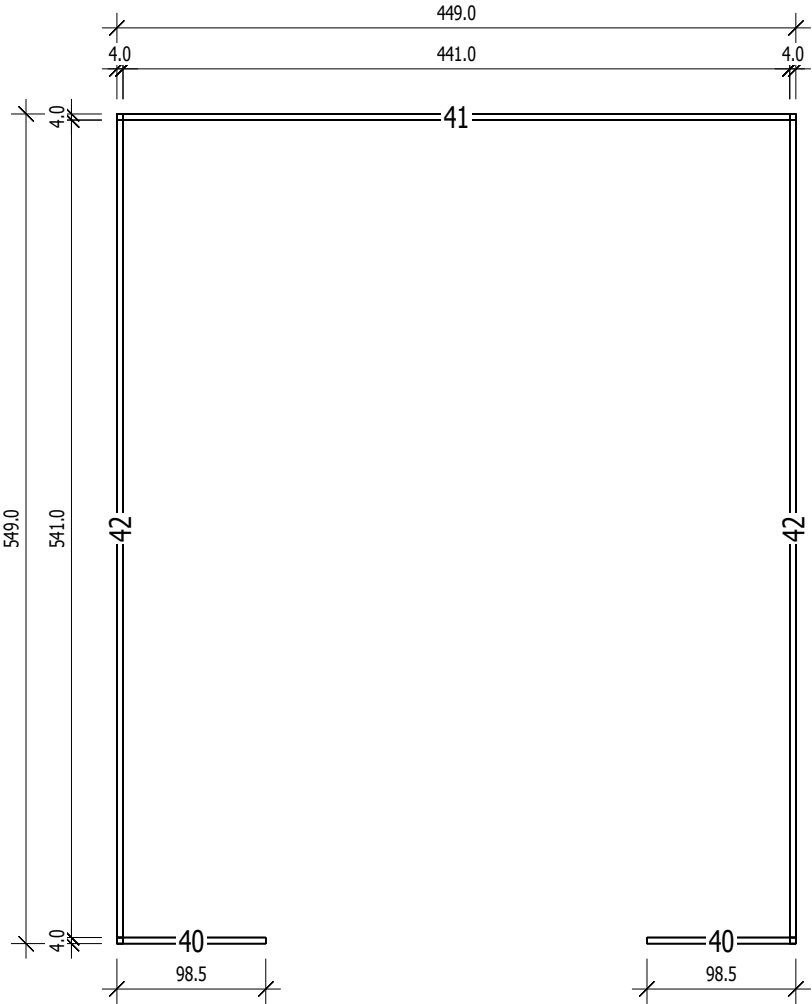
Bemerkung: die Ansicht von Türen, Fenster und anderen Teilen kann abweichen von diesem Bild

4,5

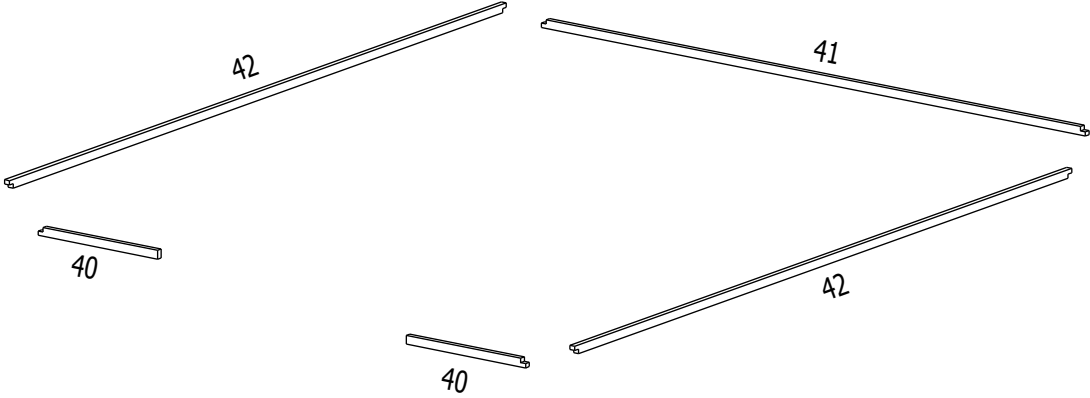


Grundrahmenplan

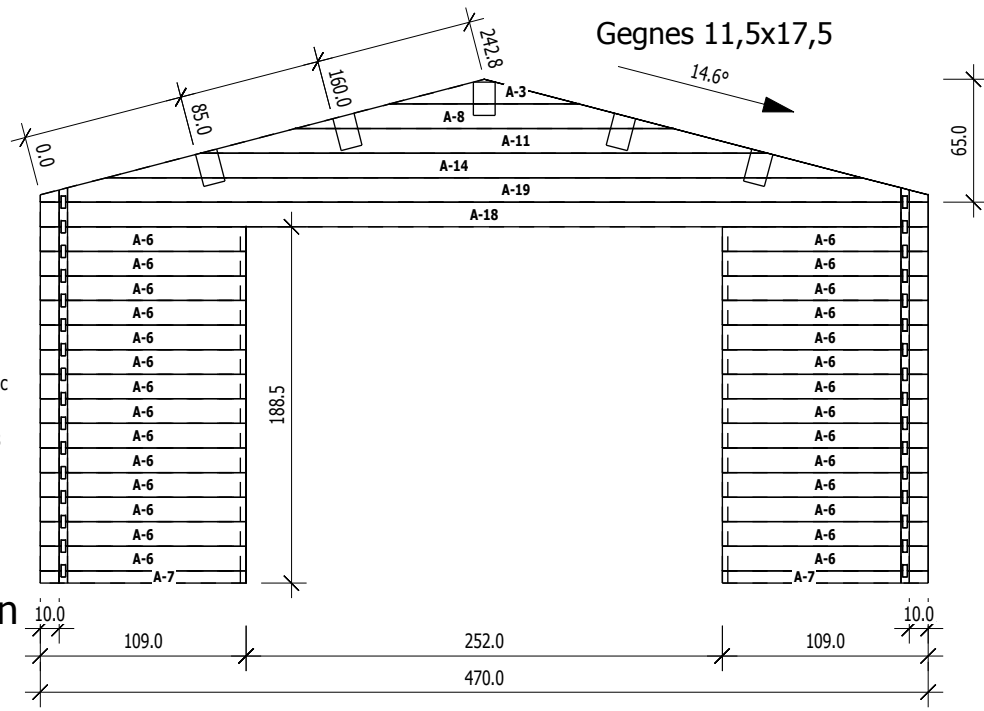
4,5



Nr.	B [cm]	H [cm]	L [cm]	Psc
40	4,0	6,0	98,5	2
41	4,0	6,0	449,0	1
42	4,0	6,0	549,0	2



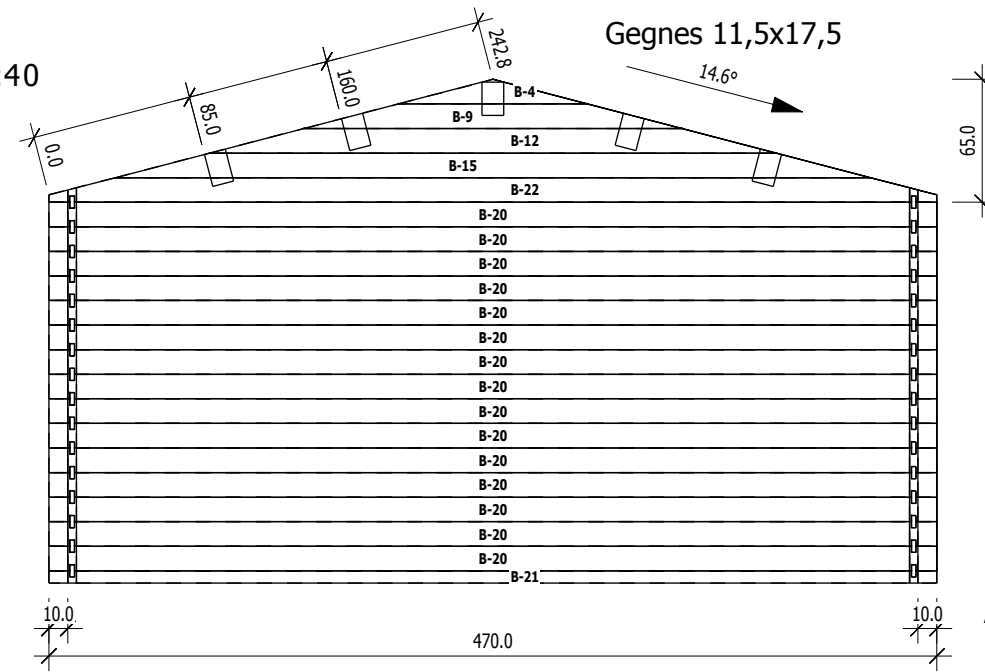
A
M 1:40



Nr	H	L	Psc
A 3	13.0	100.0	1
A 6	13.0	109.0	28
A 7	6.5	109.0	2
A 8	13.0	200.0	1
A 11	13.0	300.0	1
A 14	13.0	400.0	1
A 18	13.0	470.0	1
A 19	13.0	470.0	1

Ansicht von Aussen

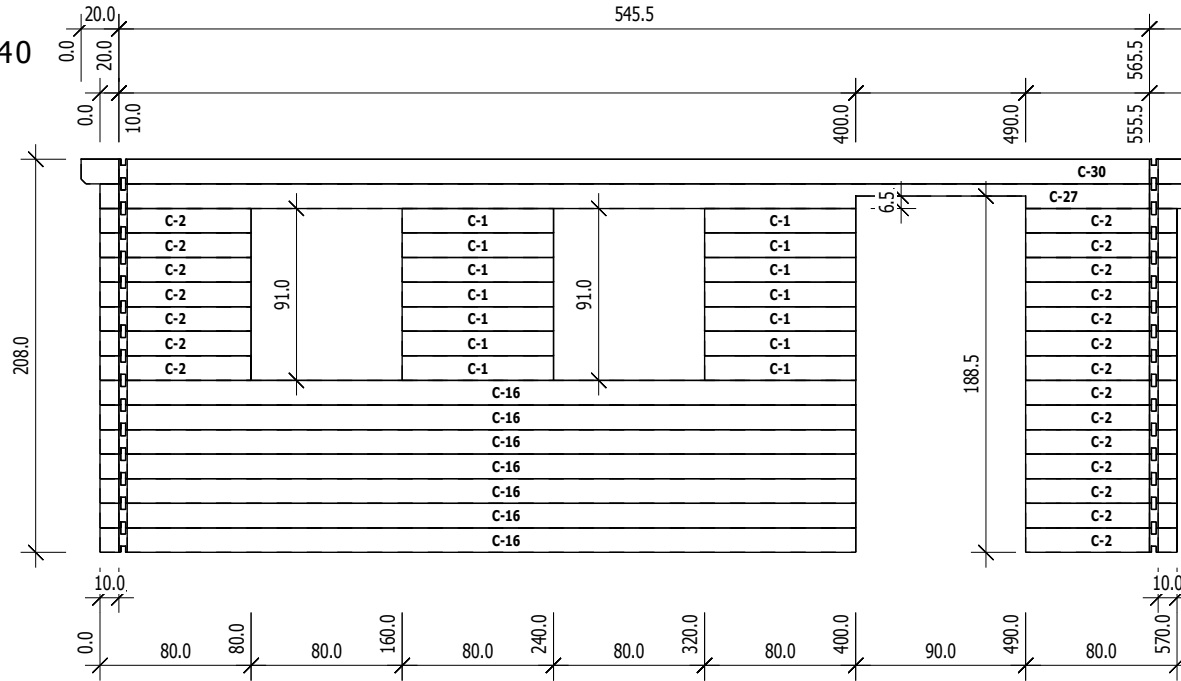
B
M 1:40



Nr	H	L	Psc
B 4	13.0	100.0	1
B 9	13.0	200.0	1
B 12	13.0	300.0	1
B 15	13.0	400.0	1
B 20	13.0	470.0	15
B 21	6.5	470.0	1
B 22	13.0	470.0	1

Ansicht von Innen

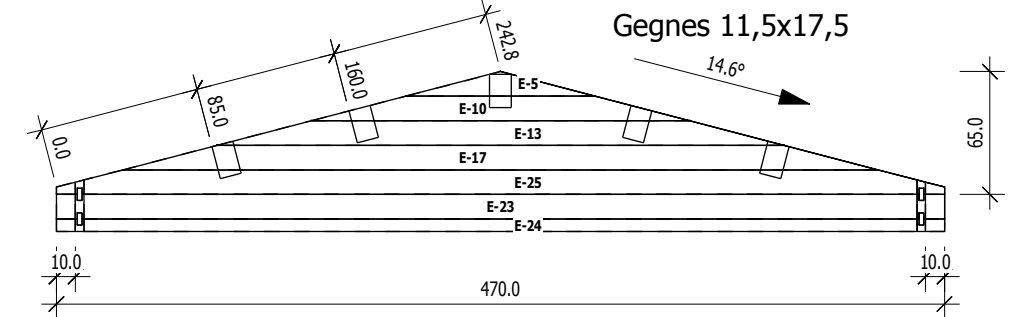
C
M 1:40



Nr	H	L	Psc
C 1	13.0	80.0	14
C 2	13.0	80.0	21
C 16	13.0	400.0	7
C 27	13.0	1050.0	1
C 30	13.0	1070.0	1

Ansicht von Aussen

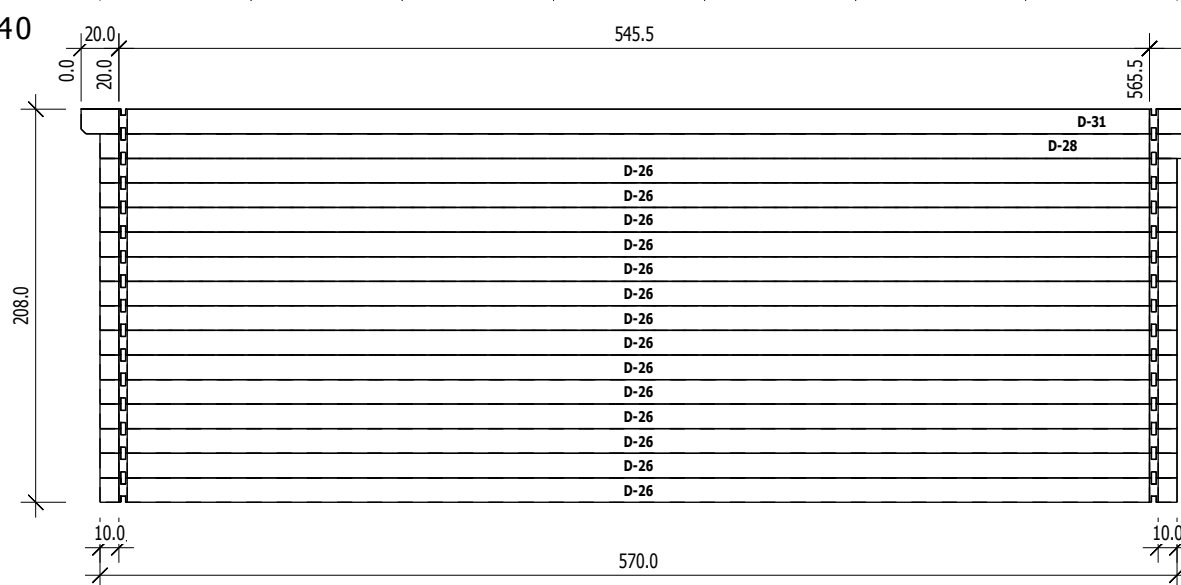
E
M 1:40



Nr	H	L	Psc
E 5	13.0	100.0	1
E 10	13.0	200.0	1
E 13	13.0	300.0	1
E 17	13.0	400.0	1
E 23	13.0	470.0	1
E 24	6.5	470.0	1
E 25	13.0	470.0	1

Ansicht von Aussen

D
M 1:40



Nr	H	L	Psc
D 26	13.0	570.0	14
D 28	13.0	1050.0	1
D 31	13.0	1070.0	1

Ansicht von Innen