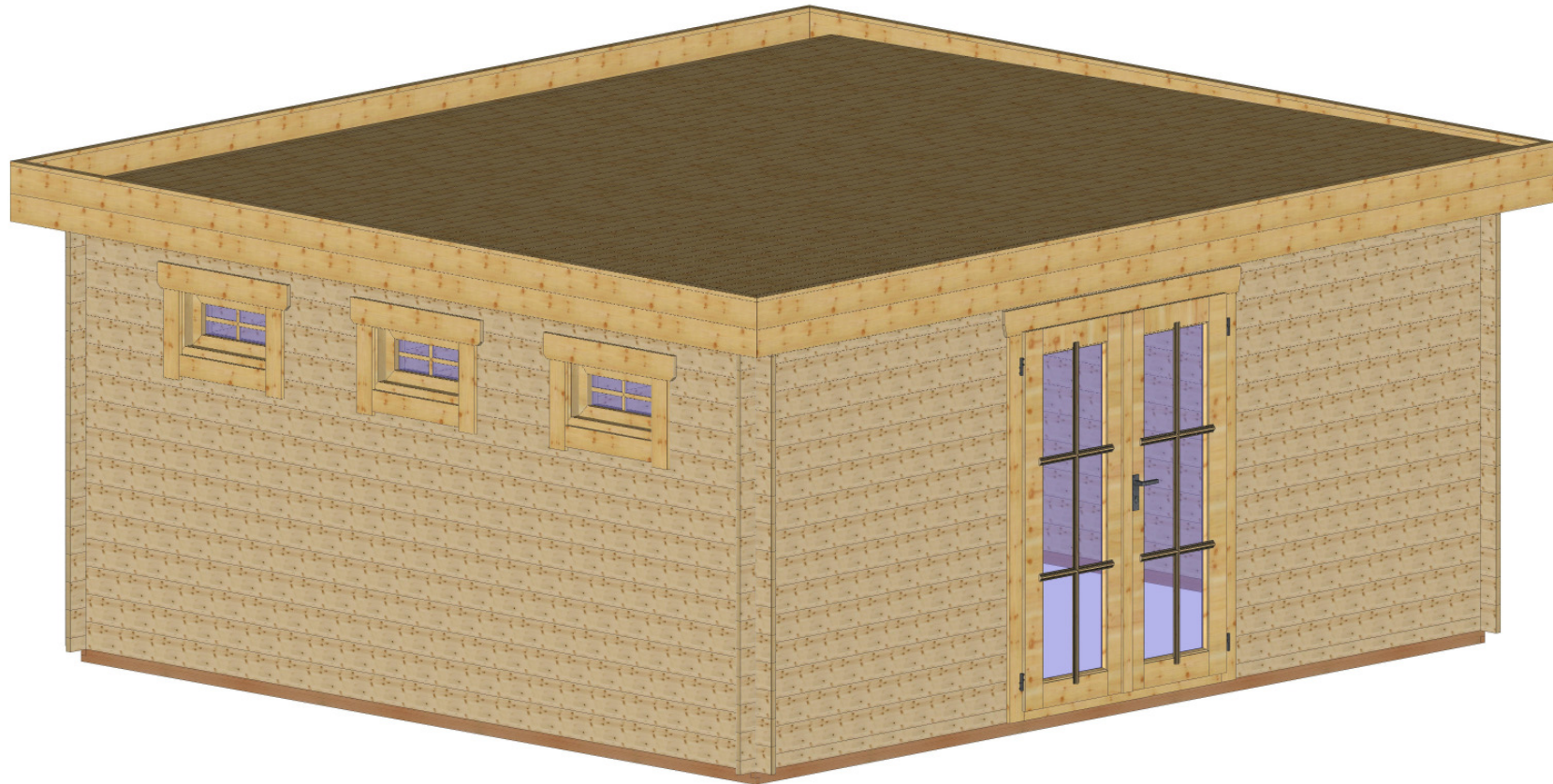


MT-5045

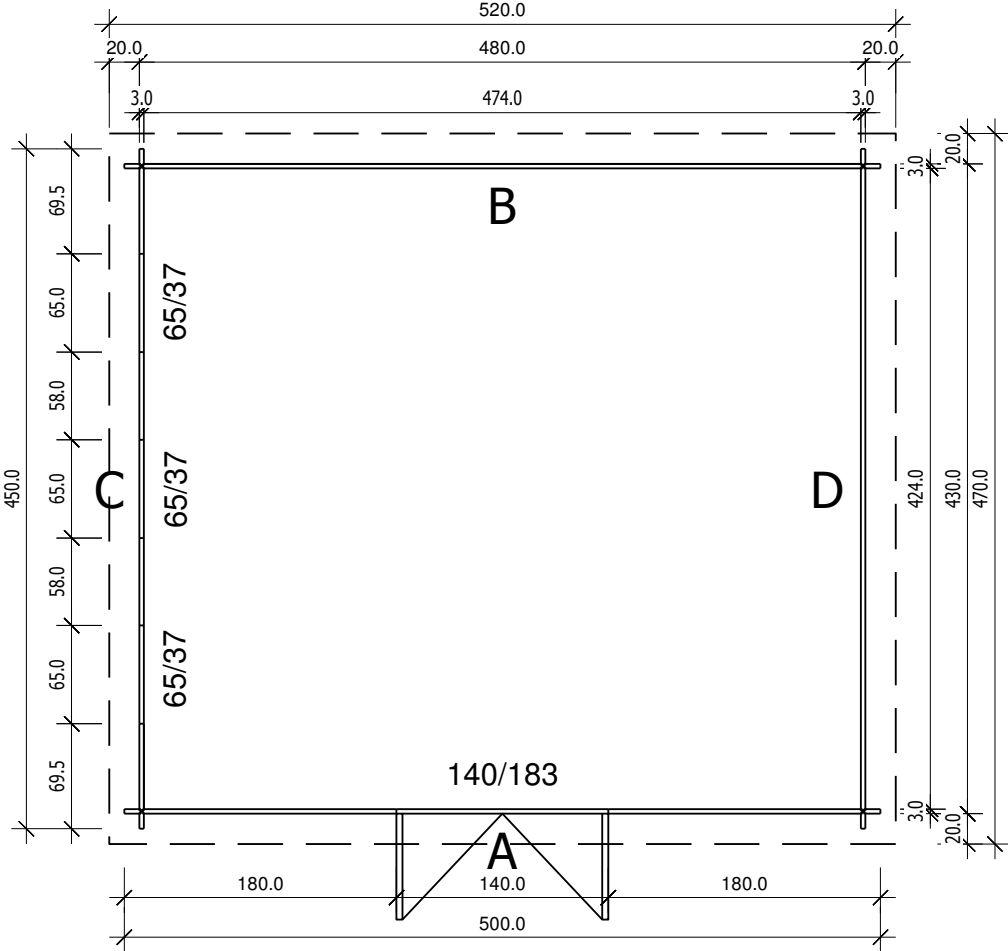


Bemerkung: die Ansicht von Turen, Fenster und anderen Teilen kann abweichen von diesem Bild

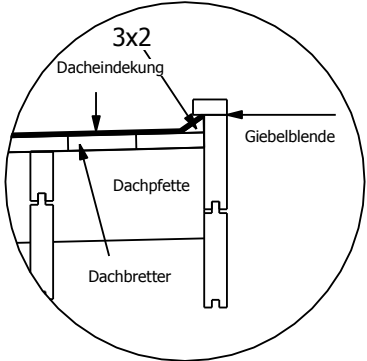
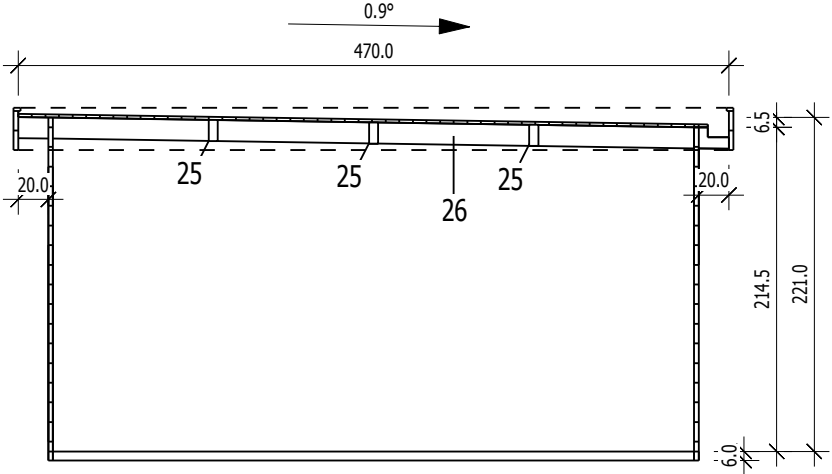
MT-5045

3,0

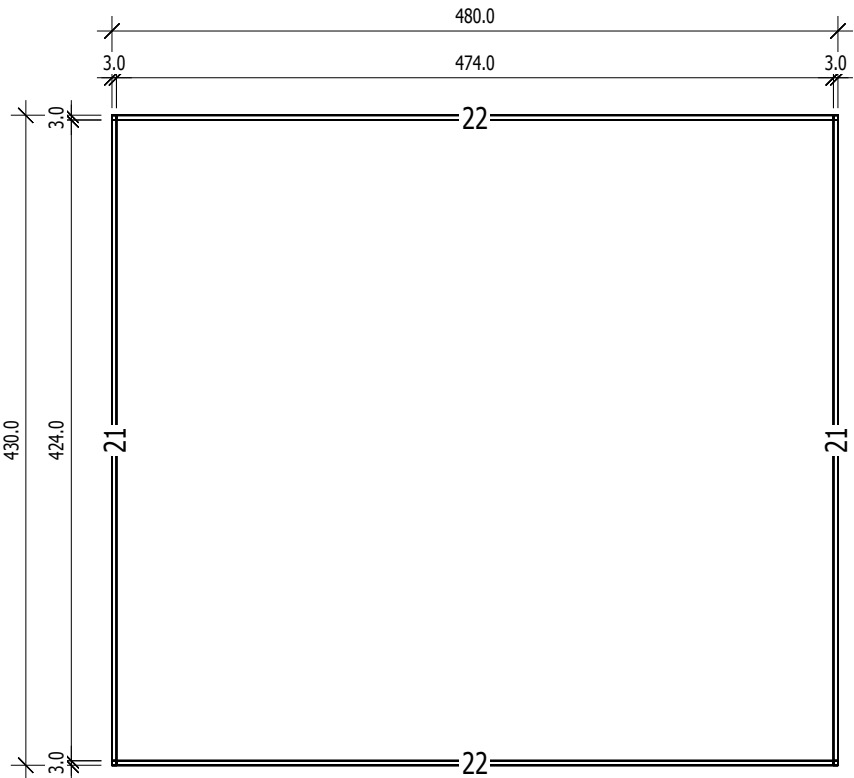
Grundriss



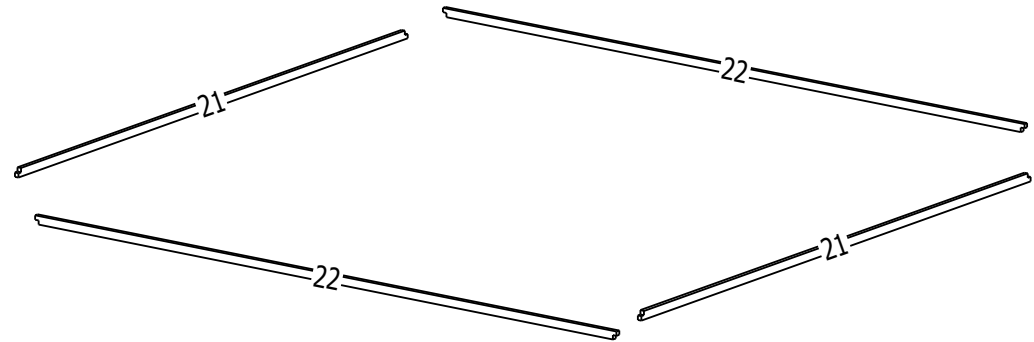
Schnitt



Grundrahmenplan



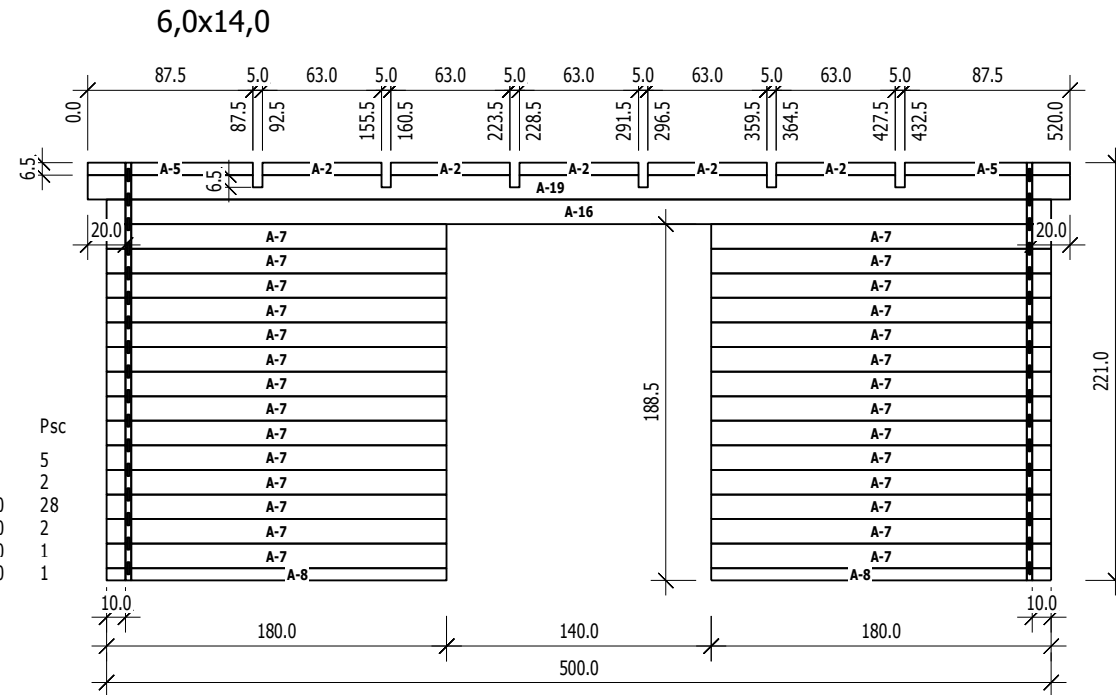
Nr.	B	H	L	Psc	
	[cm]	[cm]	[cm]		
27	3,0	6,0	430,0	2	Maumedis
28	3,0	6,0	480,0	2	Maumedis



A

M 1:40

Ansicht von Aussen

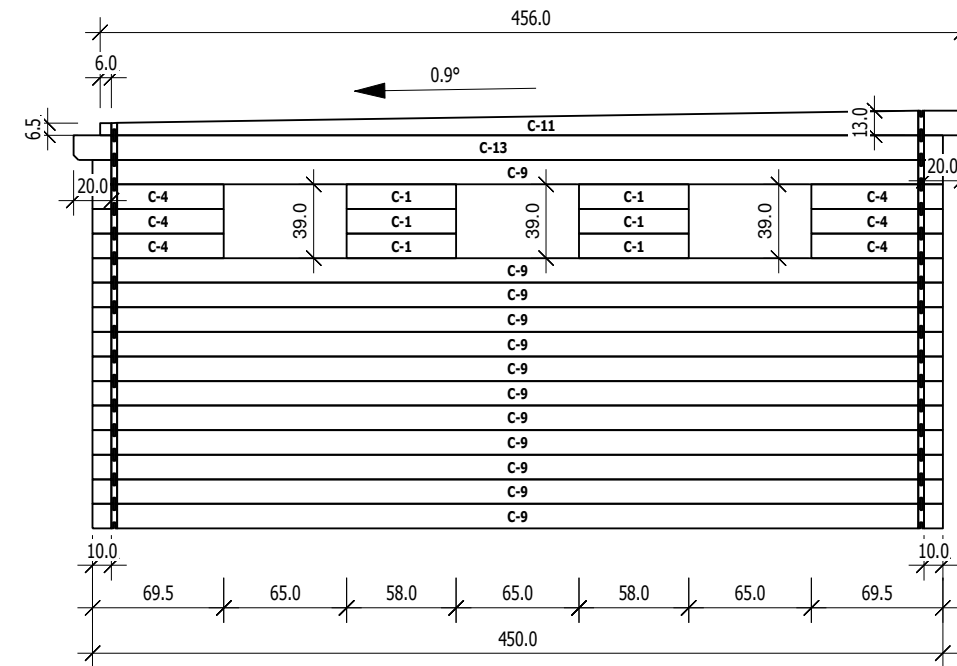


Nr	H	L	Psc
A 2	6,5	63,0	5
A 5	6,5	87,5	2
A 7	13,0	180,0	28
A 8	6,5	180,0	2
A 16	13,0	500,0	1
A 19	13,0	520,0	1

C

M 1:40

Ansicht von Aussen

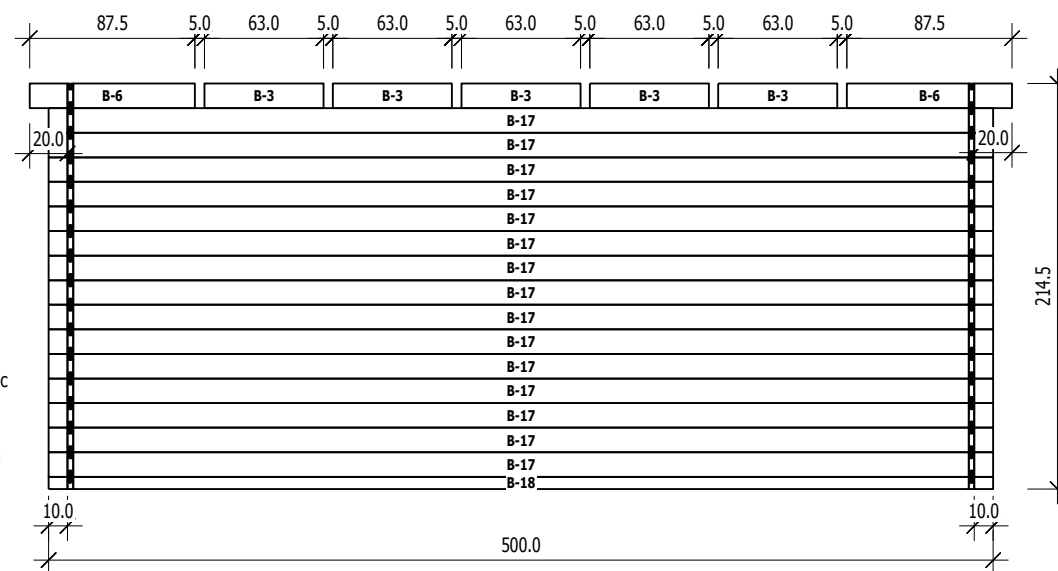


Nr	H	L	Psc
C 1	13,0	58,0	6
C 4	13,0	69,5	6
C 9	13,0	450,0	12
C 11	13,0	456,0	1
C 13	13,0	460,0	1

B

M 1:40

Ansicht von Innen

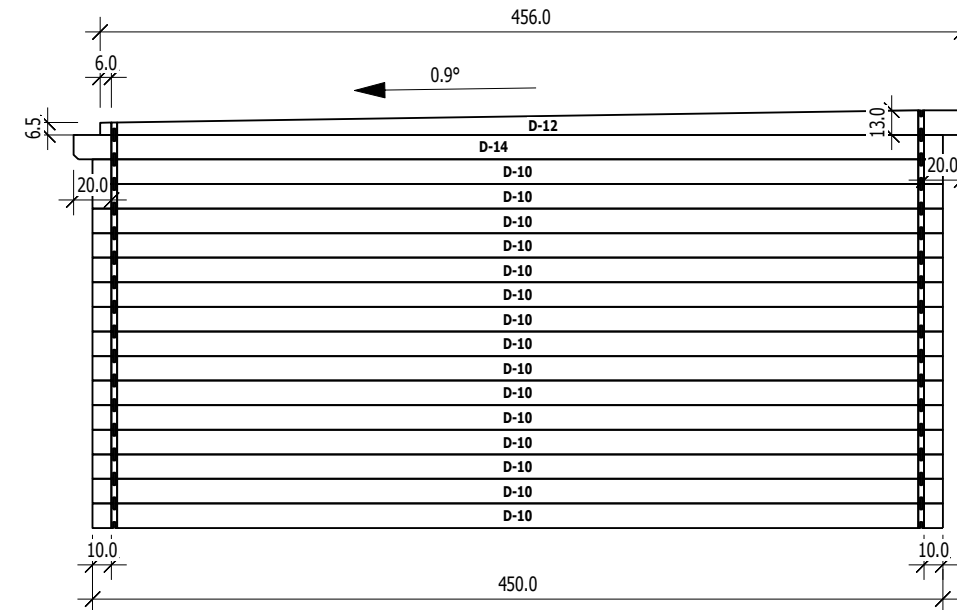


Nr	H	L	Psc
B 3	13,0	63,0	5
B 6	13,0	87,5	2
B 17	13,0	500,0	15
B 18	6,5	500,0	1

D

M 1:40

Ansicht von Innen



Nr	H	L	Psc
D 10	13,0	450,0	15
D 12	13,0	456,0	1
D 14	13,0	460,0	1