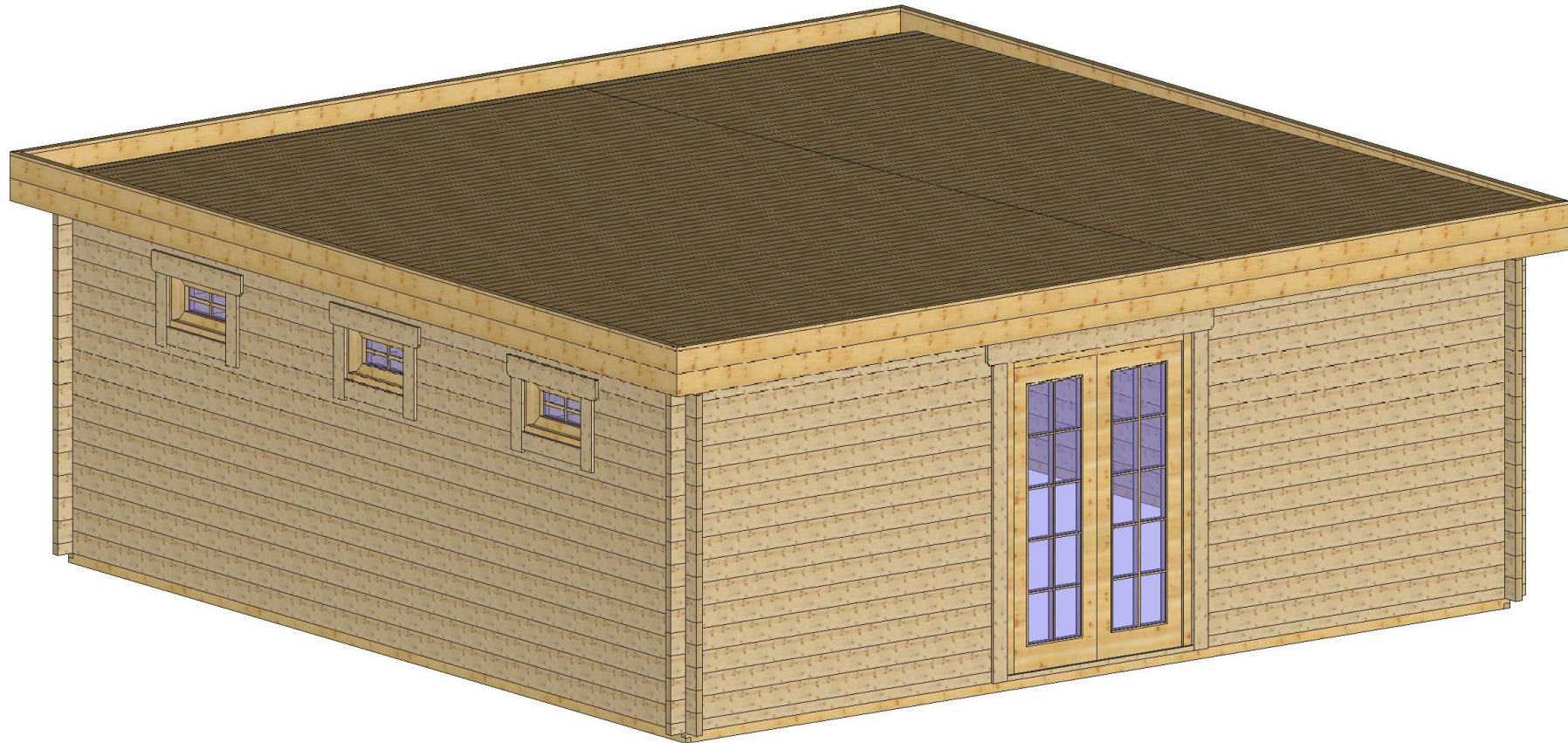
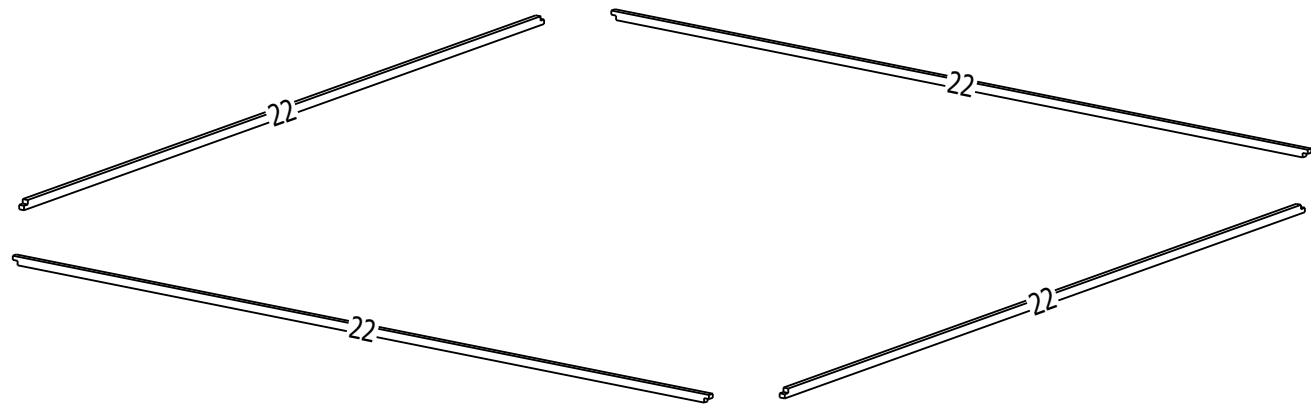
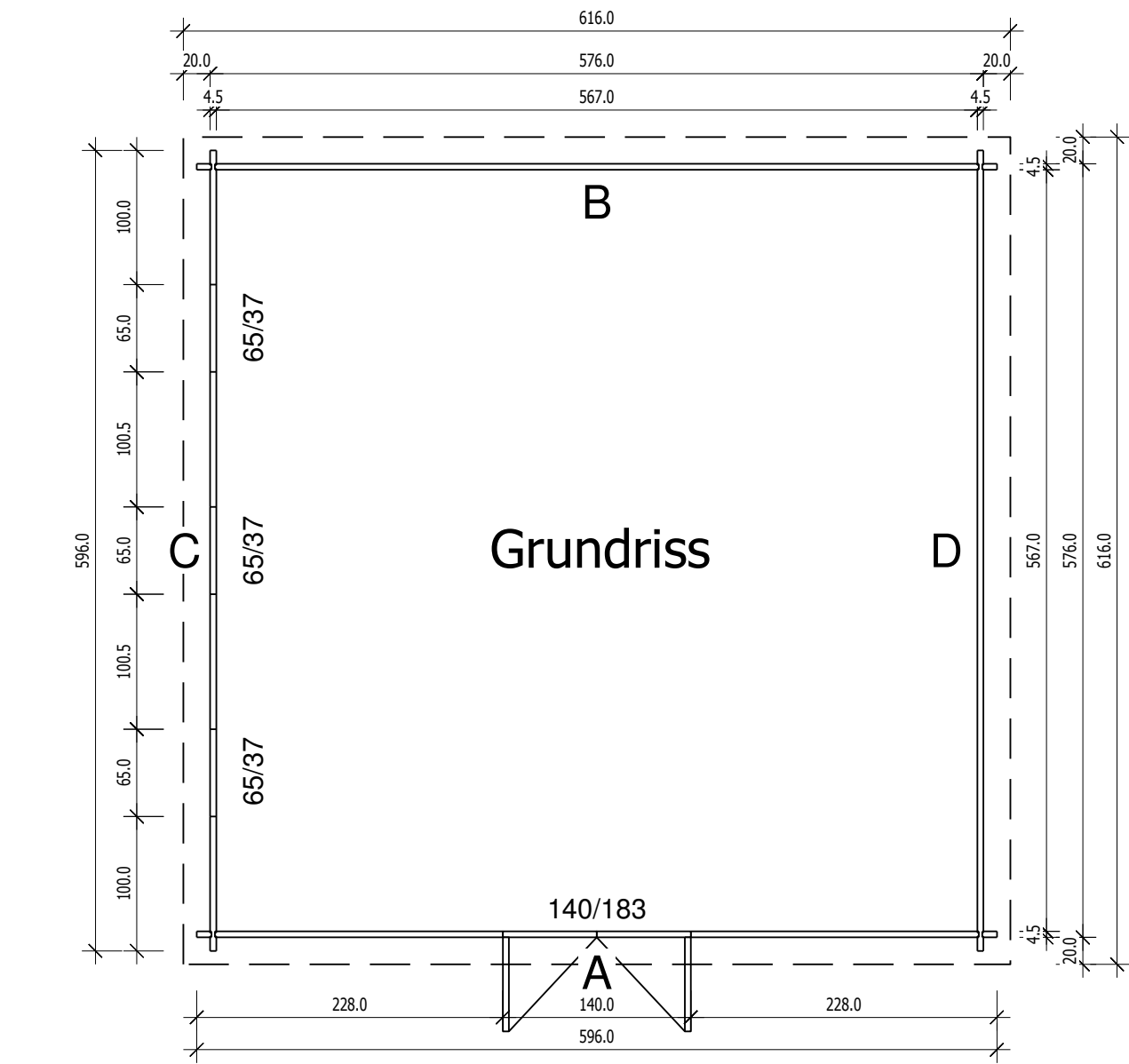


MT-6060



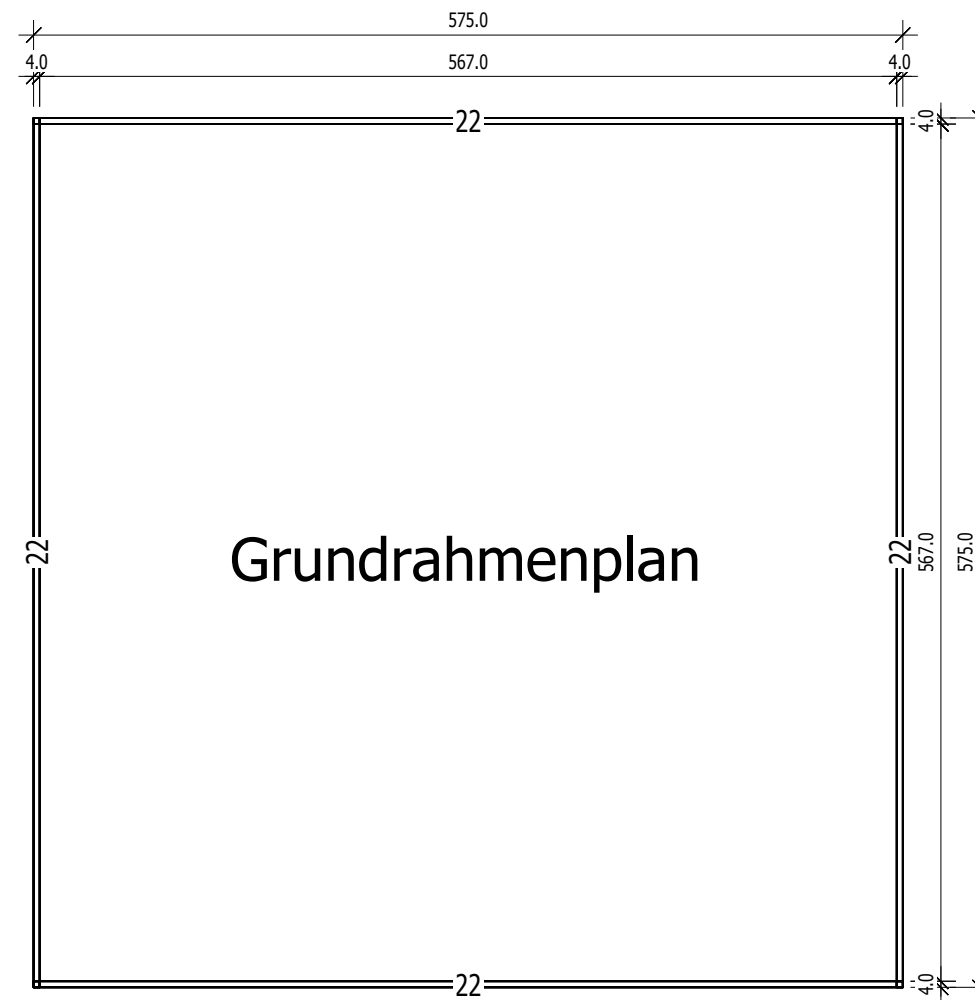
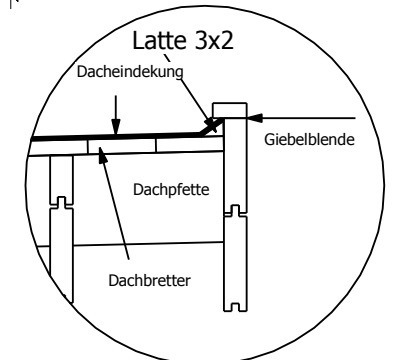
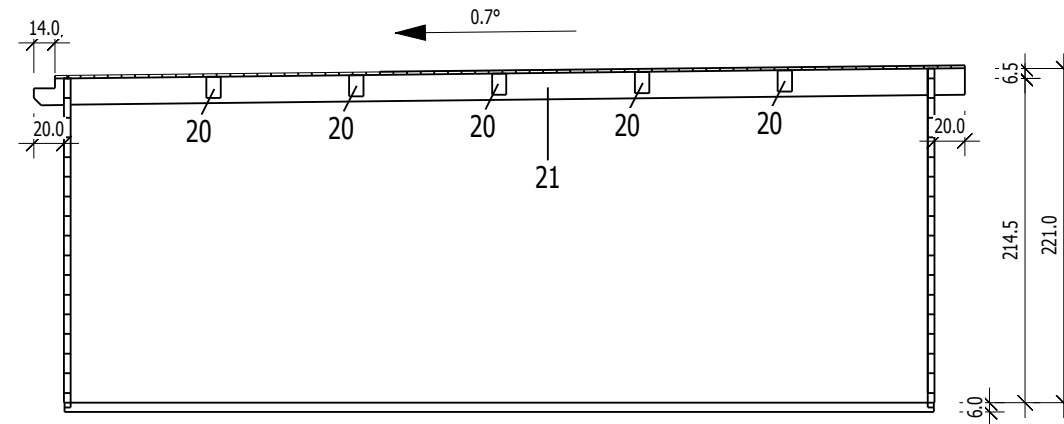
Bemerkung: die Ansicht von Türen, Fenster und anderen Teilen kann abweichen von diesem Bild



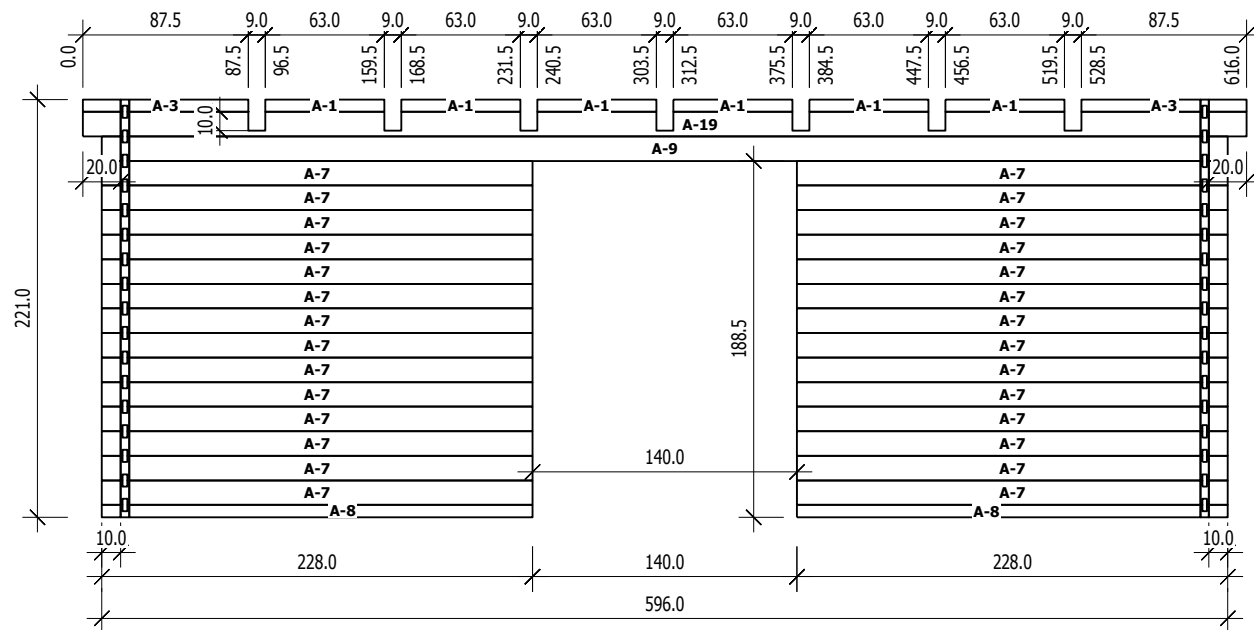


MT-6060

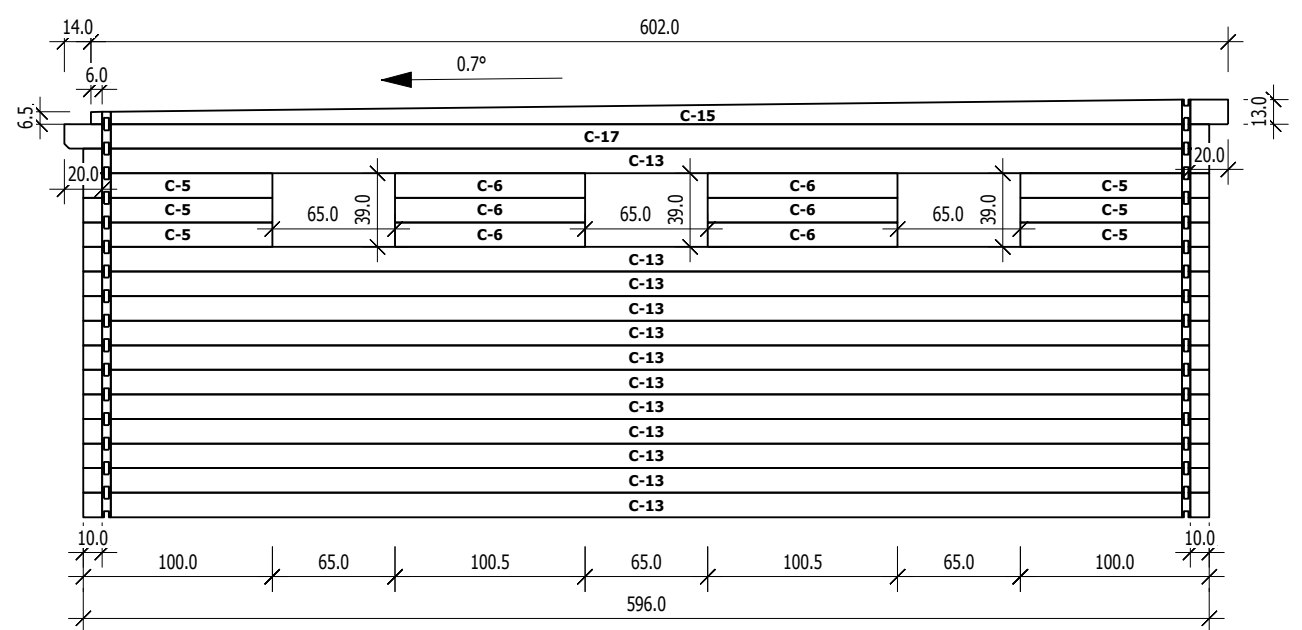
Schnitt



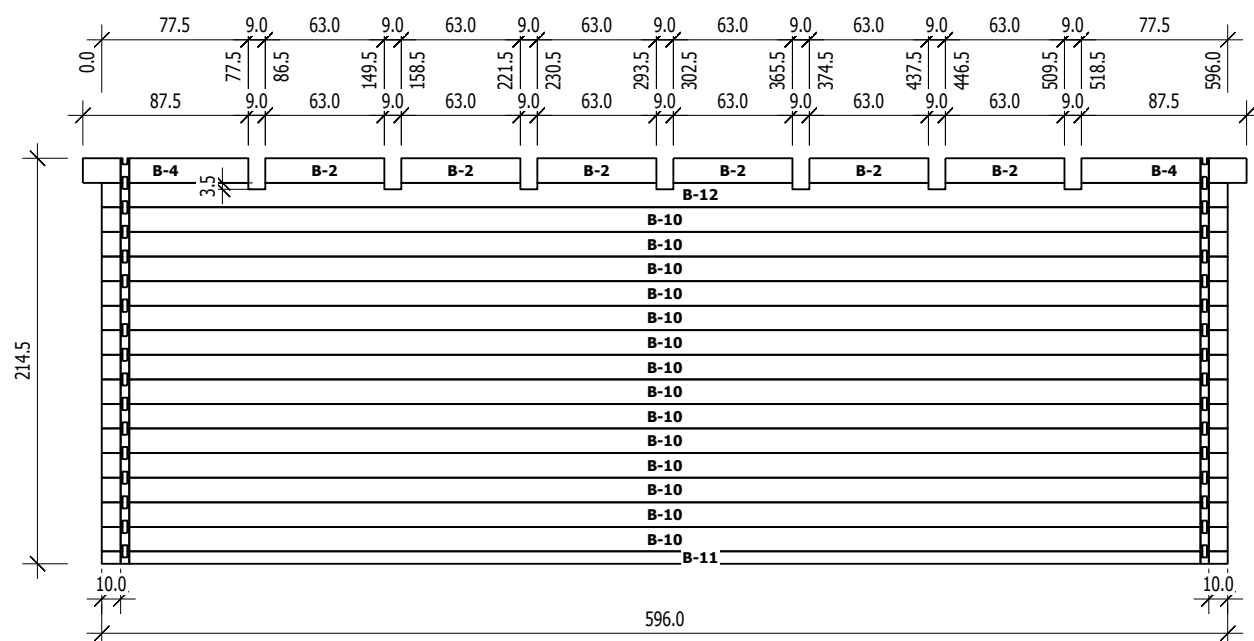
Nr.	B	H	L	Psc
	[cm]	[cm]	[cm]	
-----	-----	-----	-----	-----
22	4,0	6,0	575,0	4



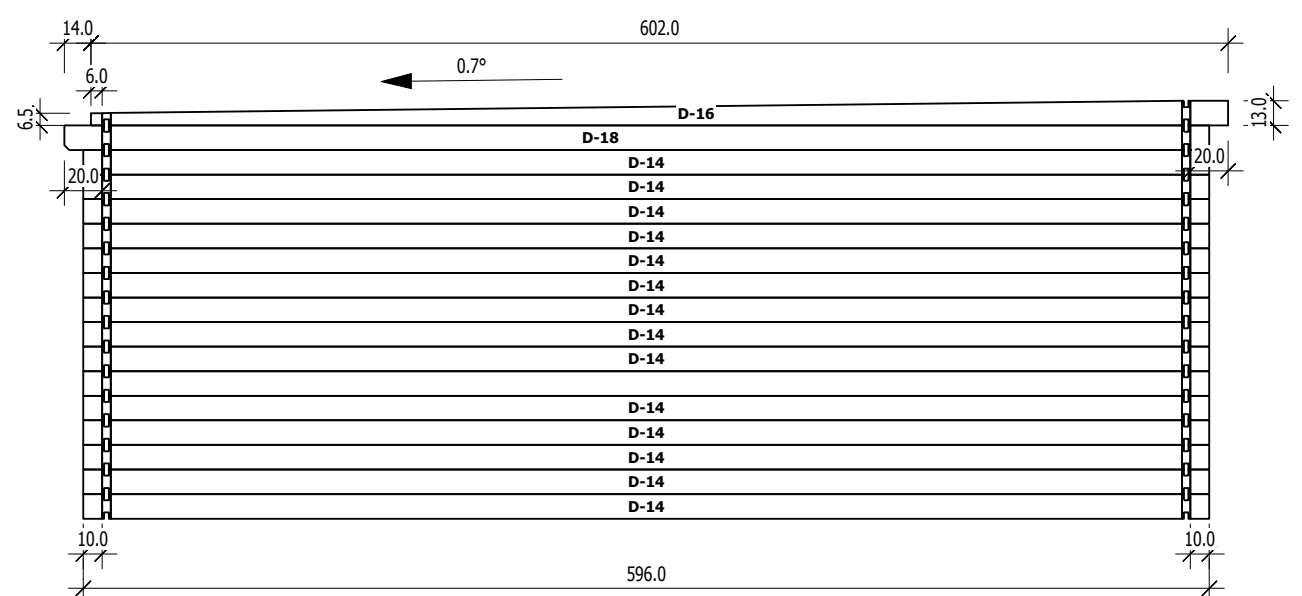
	Nr	H	L	Psc
A	1	6.5	63.0	6
A	3	6.5	87.5	2
A	7	13.0	228.0	28
A	8	6.5	228.0	2
A	9	13.0	596.0	1
A	19	13.0	616.0	1



	Nr	H	L	Psc
C	5	13.0	100.0	6
C	6	13.0	100.5	6
C	13	13.0	596.0	12
C	15	13.0	602.0	1
C	17	13.0	606.0	1



	Nr	H	L	Psc
B	2	13.0	63.0	6
B	4	13.0	87.5	2
B	10	13.0	596.0	14
B	11	6.5	596.0	1
B	12	13.0	596.0	1



	Nr	H	L	Psc
D	14	13.0	596.0	15
D	16	13.0	602.0	1
D	18	13.0	606.0	1