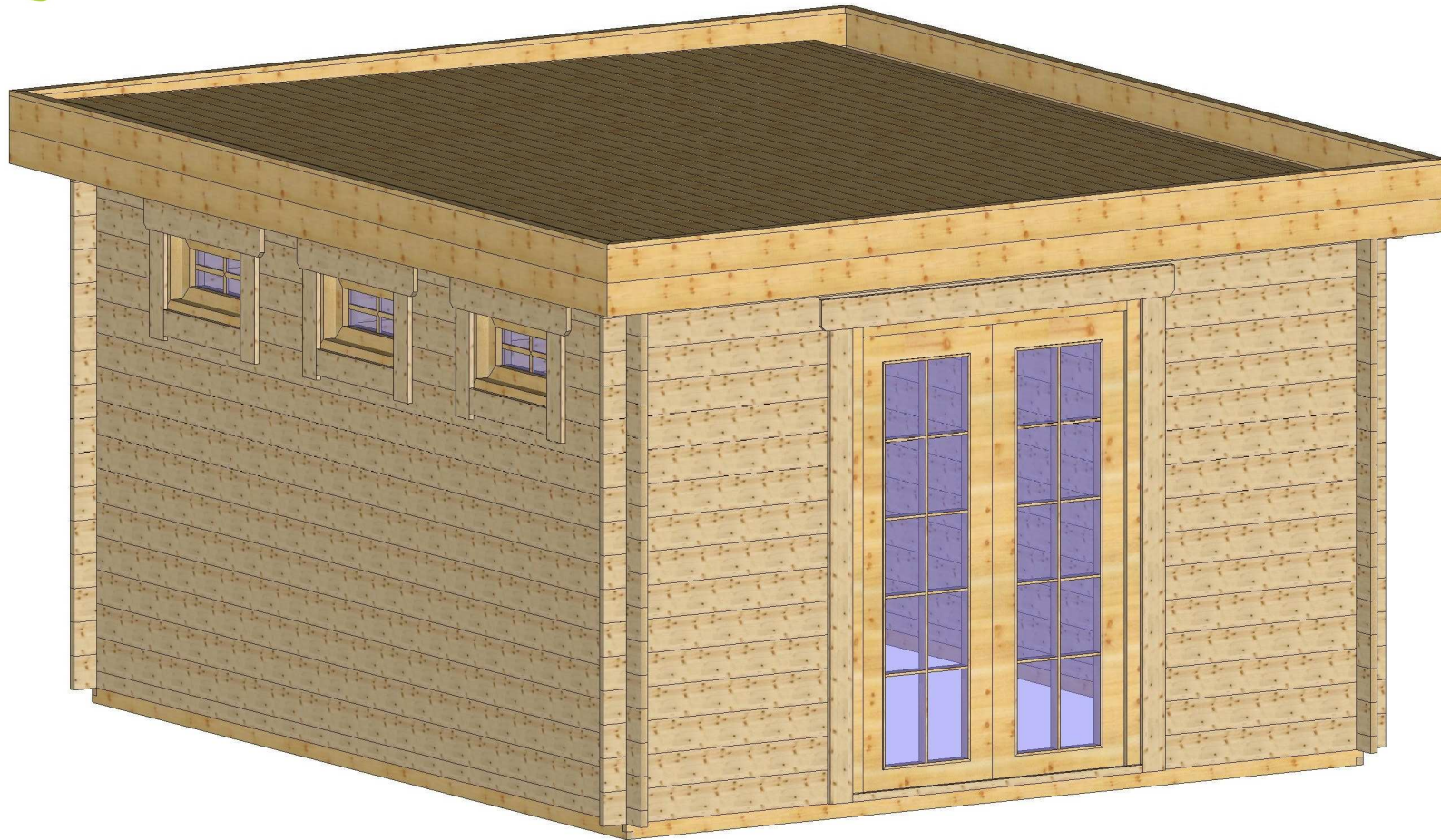




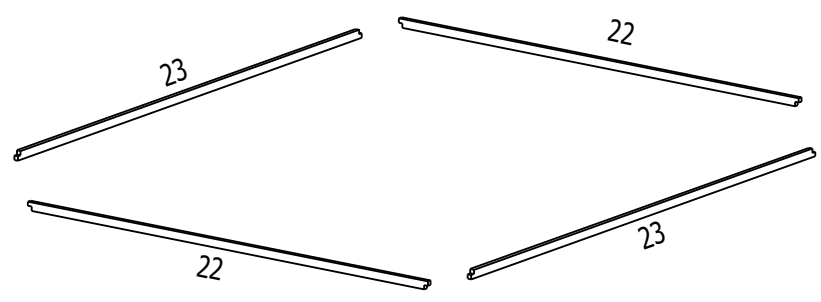
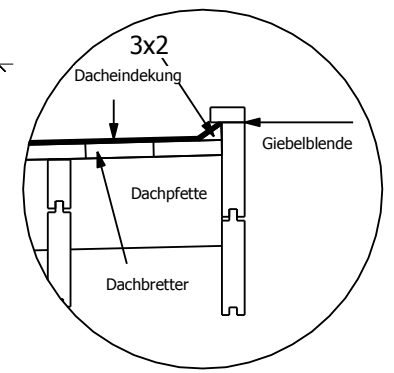
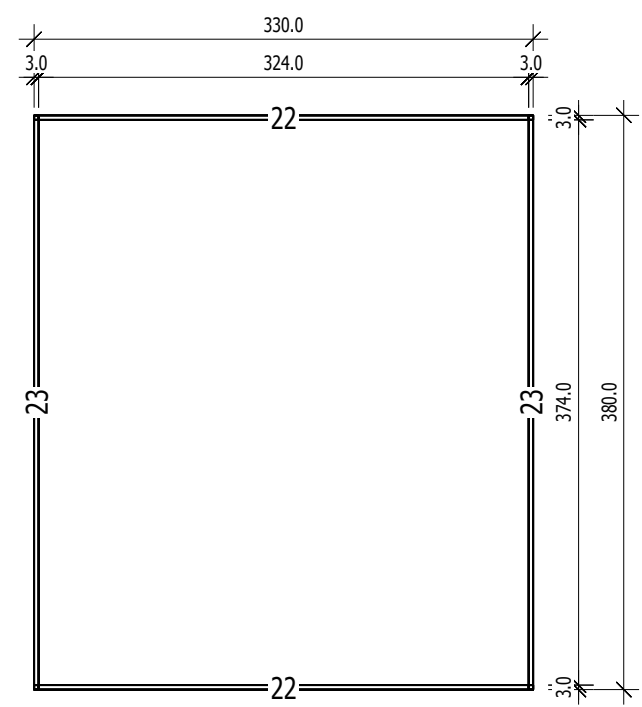
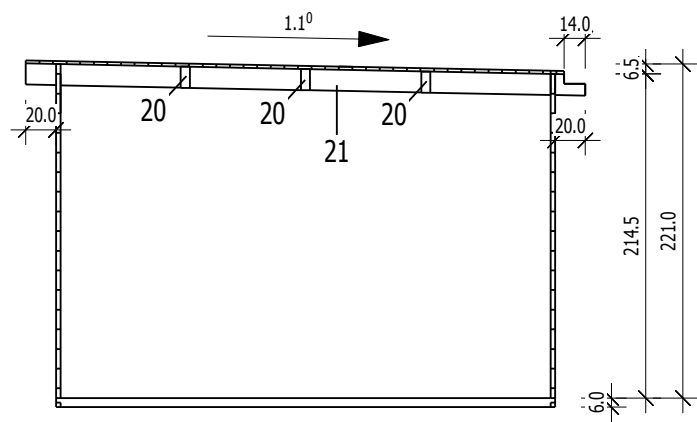
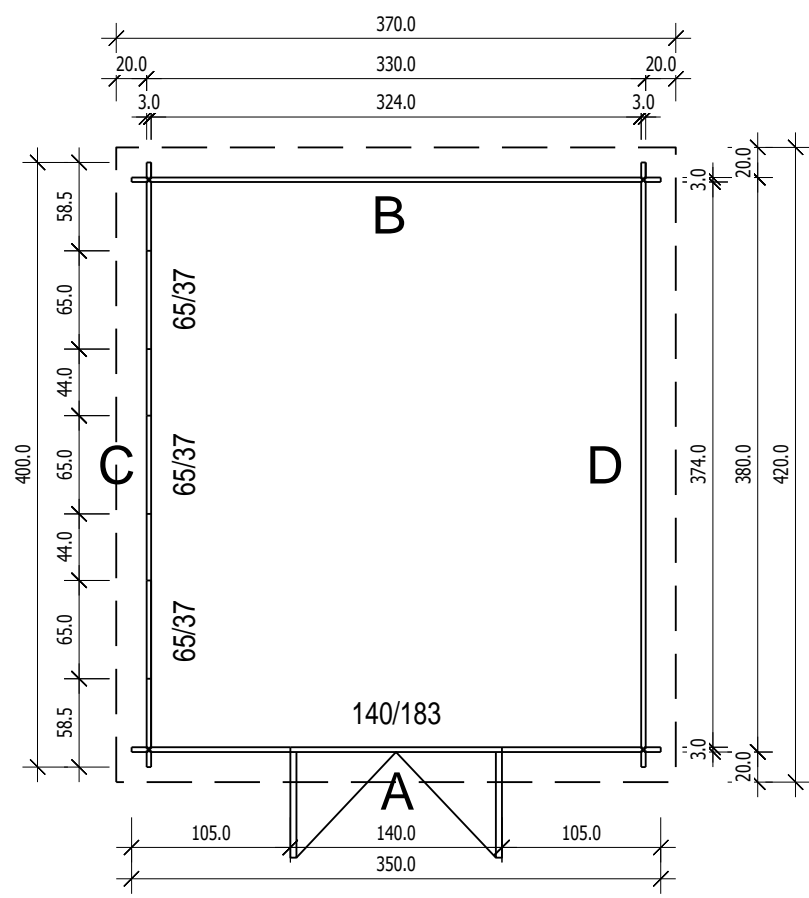
MT-3540



Bemerkung: die Ansicht von Turen, Fenster und anderen Teilen kann abweichen von diesem Bild

3,0

MT-3540

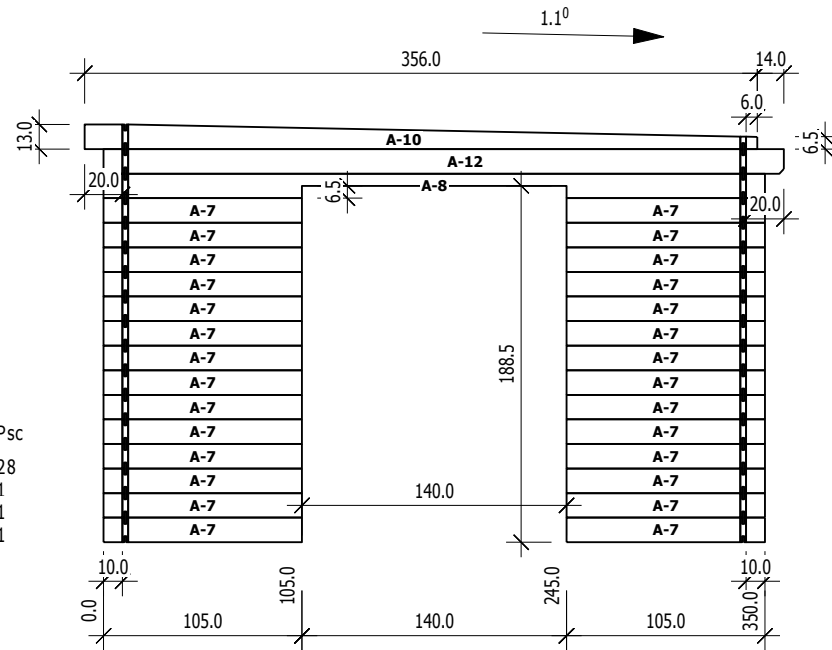


Nr.	B [cm]	H [cm]	L [cm]	Psc
22	3,0	6,0	330,0	2
23	3,0	6,0	380,0	2

A

M 1:40

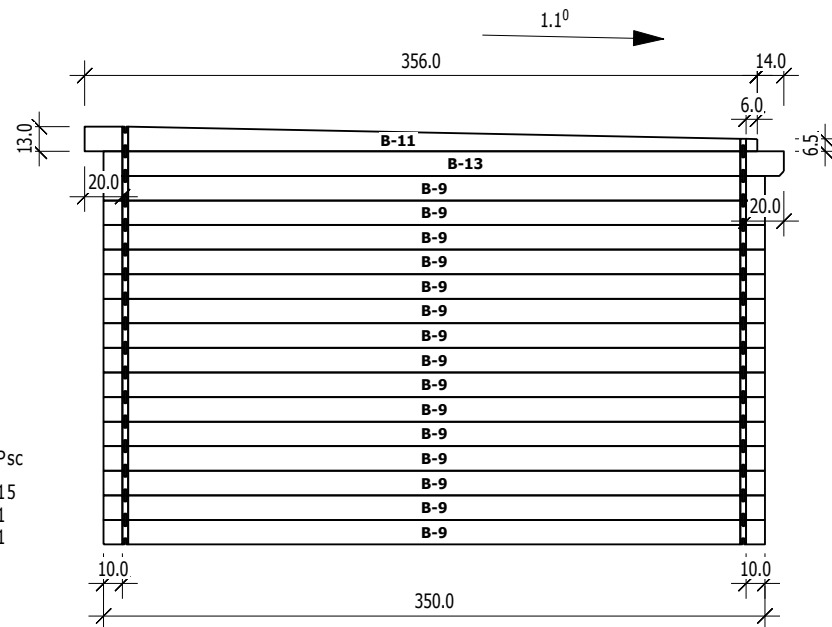
	Nr	H	L	Psc
A	7	13.0	105.0	28
A	8	13.0	350.0	1
A	10	13.0	356.0	1
A	12	13.0	360.0	1



B

M 1:40

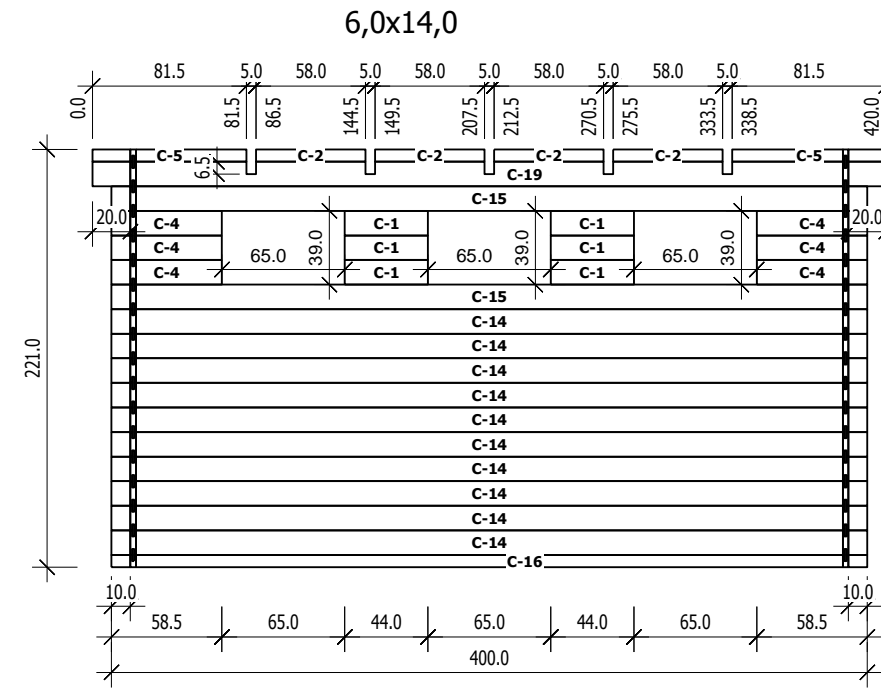
	Nr	H	L	Psc
B	9	13.0	350.0	15
B	11	13.0	356.0	1
B	13	13.0	360.0	1



C

M 1:40

	Nr	H	L	Psc
C	1	13.0	44.0	6
C	2	6.5	58.0	4
C	4	13.0	58.5	6
C	5	6.5	81.5	2
C	14	13.0	400.0	10
C	15	13.0	400.0	2
C	16	6.5	400.0	1
C	19	13.0	420.0	1



D

M 1:40

	Nr	H	L	Psc
D	3	13.0	58.0	4
D	6	13.0	81.5	2
D	17	13.0	400.0	15
D	18	6.5	400.0	1

