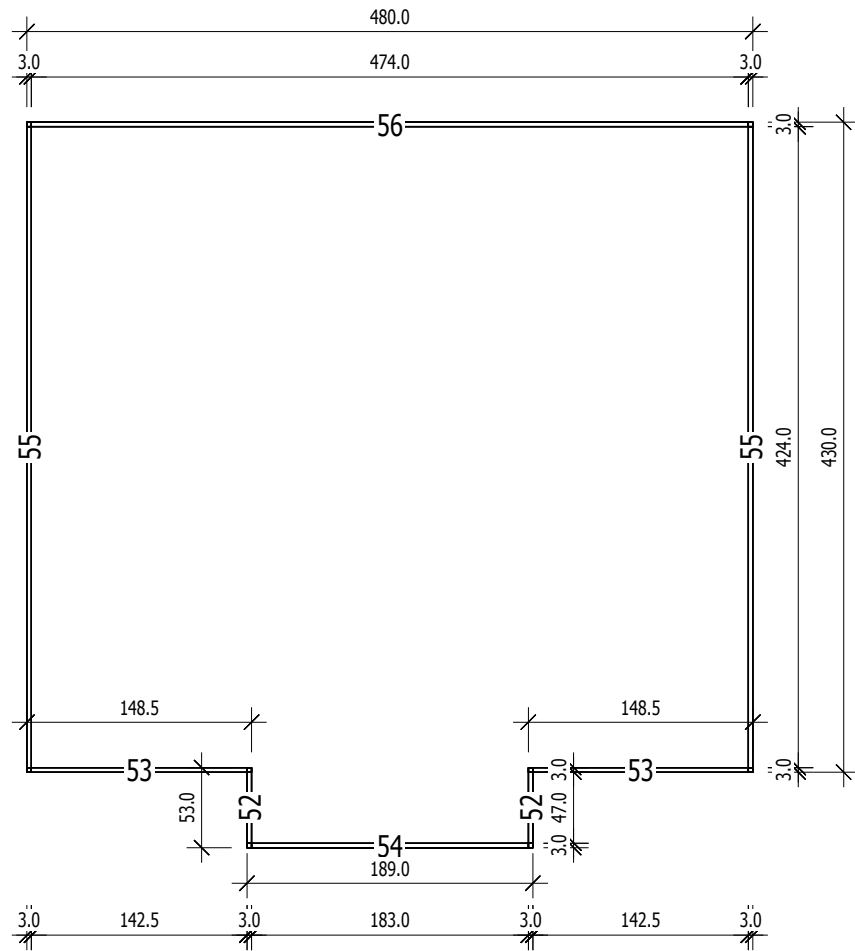


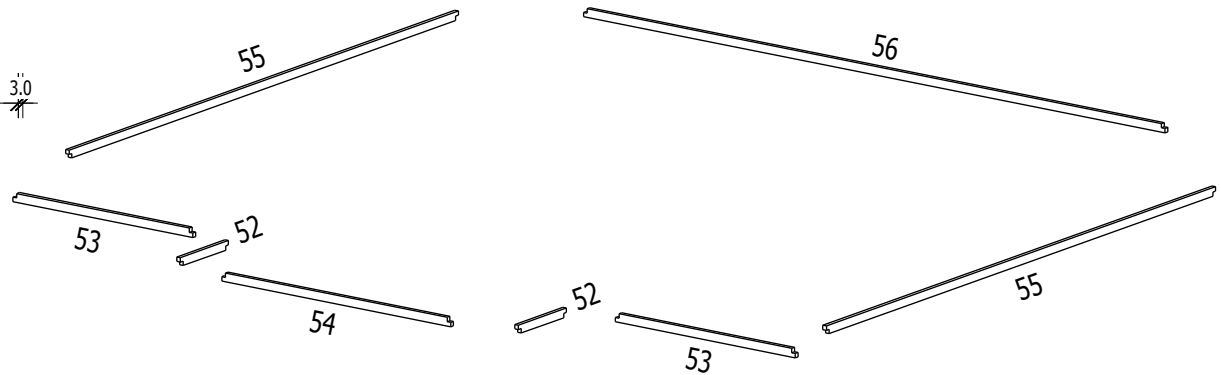


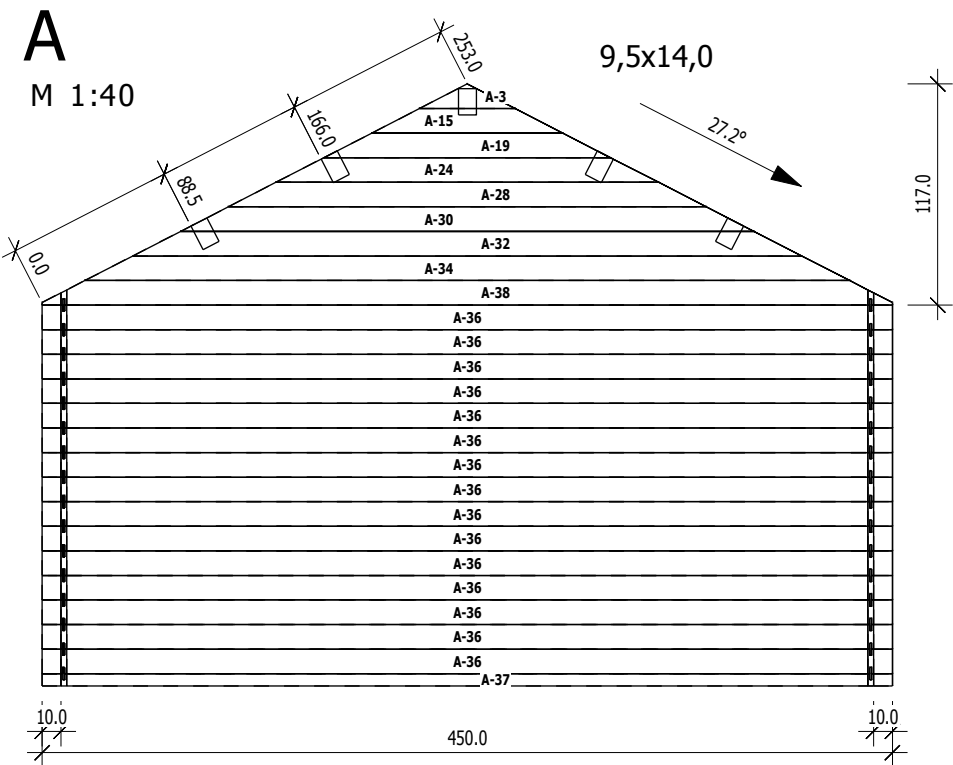
Bemerkung: die Ansicht von Turen, Fenster und anderen Teilen kann abweichen von diesem Bild

Grundrahmenplan

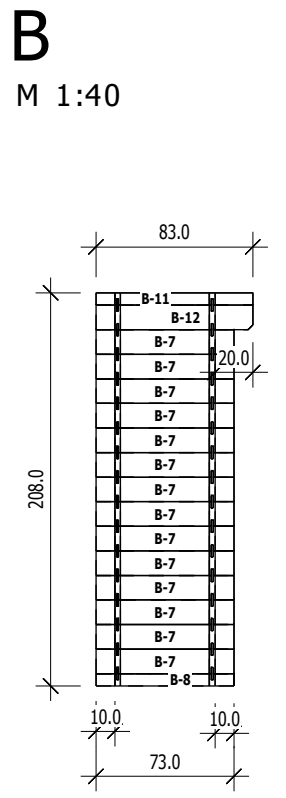


Nr.	B	H	L	Psc
	[cm]	[cm]	[cm]	
52	3,0	6,0	53,0	2
53	3,0	6,0	148,5	2
54	3,0	6,0	189,0	1
55	3,0	6,0	430,0	2
56	3,0	6,0	480,0	1

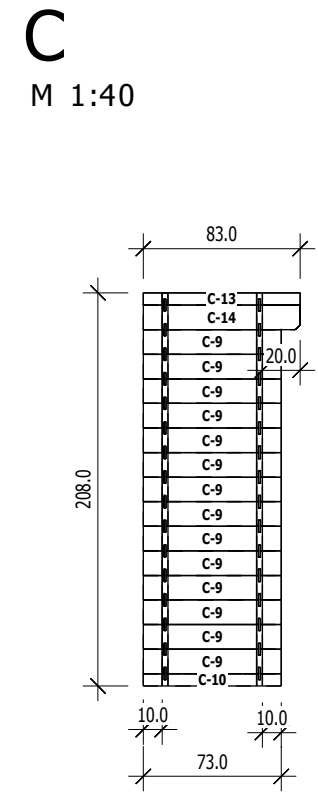




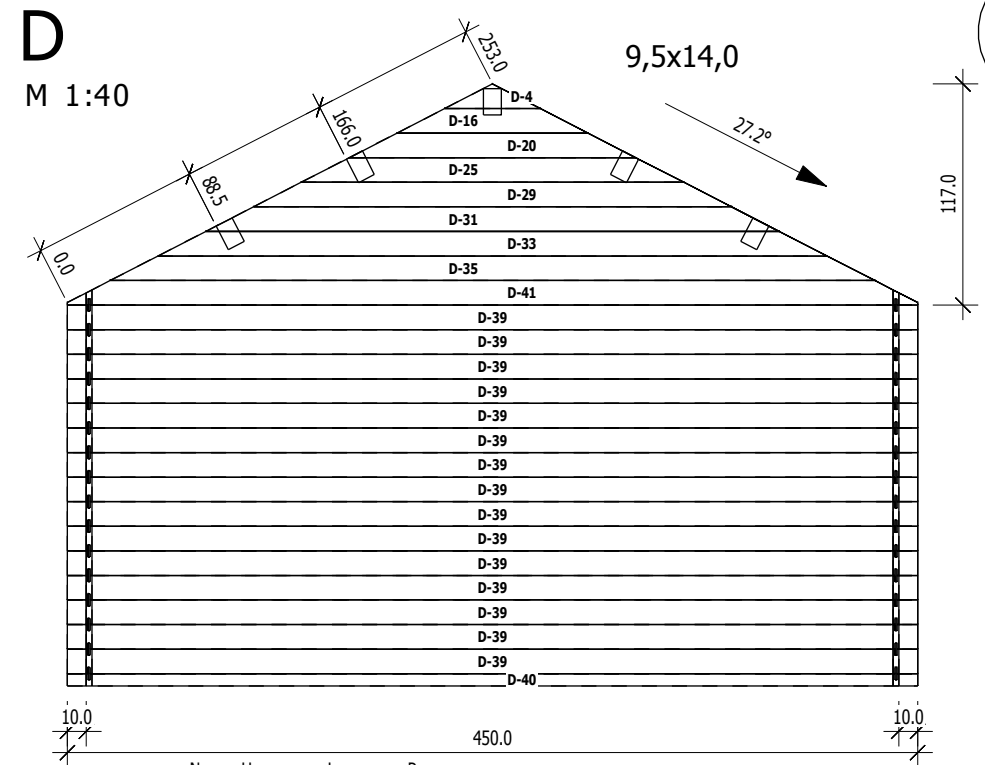
	Nr	H	L	Psc
A	3	13,0	50,6	1
A	15	13,0	101,2	1
A	19	13,0	151,8	1
A	24	13,0	202,4	1
A	28	13,0	252,9	1
A	30	13,0	303,5	1
A	32	13,0	354,1	1
A	34	13,0	404,7	1
A	36	13,0	450,0	15
A	37	6,5	450,0	1
A	38	13,0	450,0	1



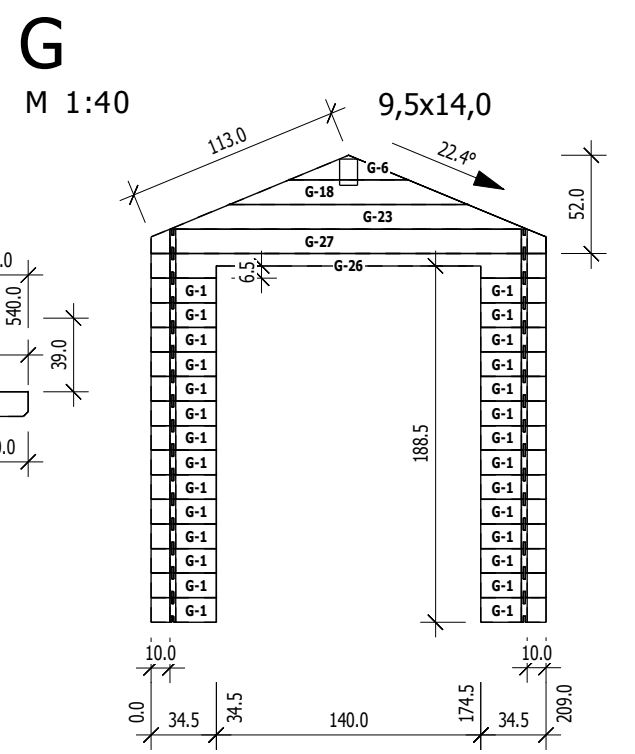
	Nr	H	L	Psc
B	7	13,0	73,0	14
B	8	6,5	73,0	1
B	11	6,5	83,0	1
B	12	13,0	83,0	1



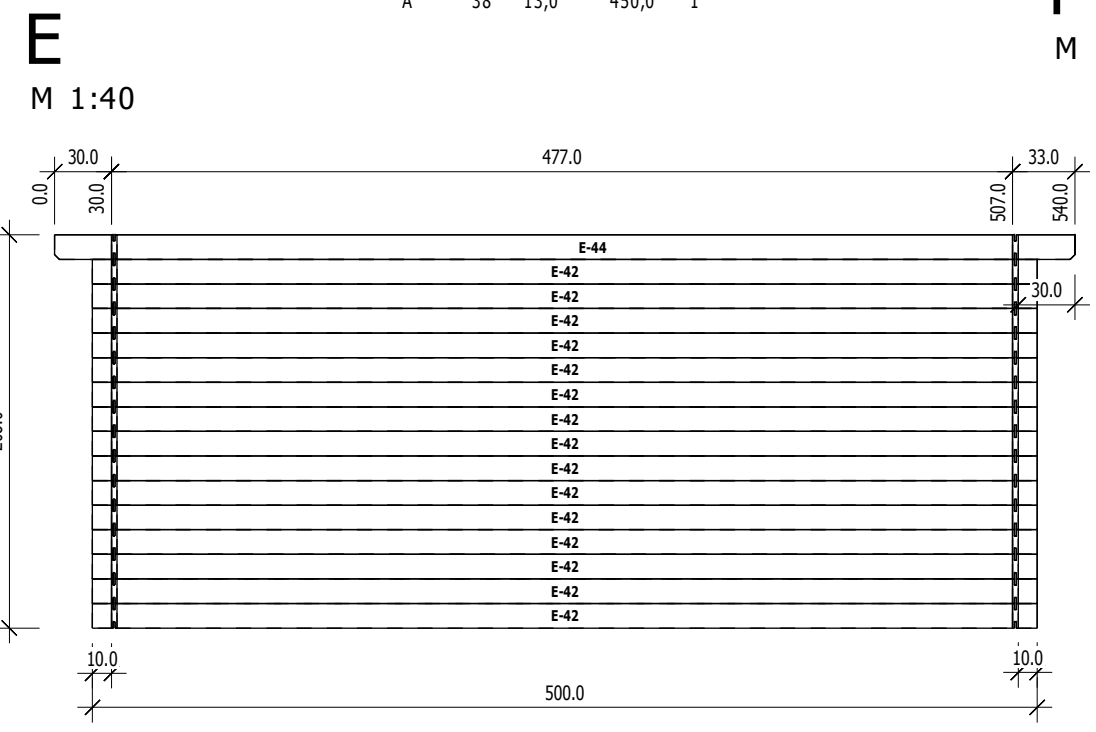
	Nr	H	L	Psc
C	9	13,0	73,0	14
C	10	6,5	73,0	1
C	13	6,5	83,0	1
C	14	13,0	83,0	1



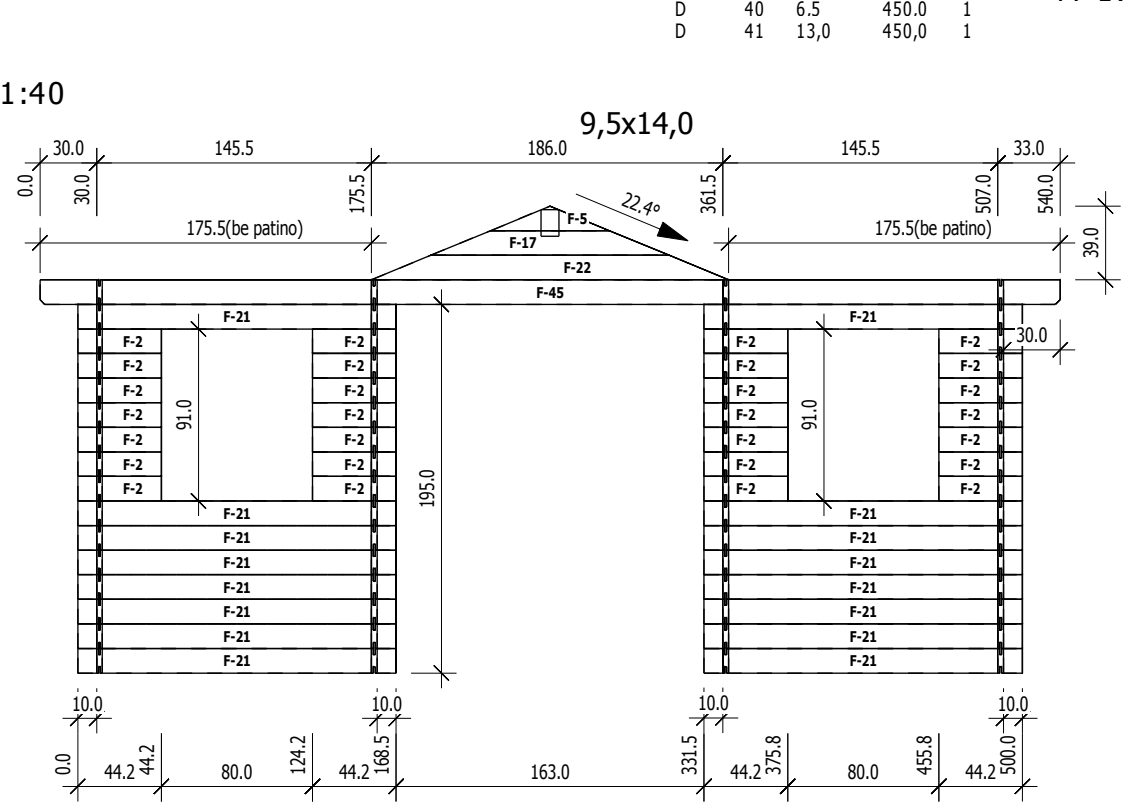
	Nr	H	L	Psc
D	4	13,0	50,6	1
D	16	13,0	101,2	1
D	20	13,0	151,8	1
D	25	13,0	202,4	1
D	29	13,0	252,9	1
D	31	13,0	303,5	1
D	33	13,0	354,1	1
D	35	13,0	404,7	1
D	39	13,0	450,0	15
D	40	6,5	450,0	1
D	41	13,0	450,0	1



	Nr	H	L	Psc
G	1	13,0	34,5	28
G	6	13,0	63,0	1
G	18	13,0	126,0	1
G	23	13,0	189,0	1
G	26	13,0	209,0	1
G	27	13,0	209,0	1



	Nr	H	L	Psc
E	42	13,0	500,0	15
E	44	13,0	540,0	1



	Nr	H	L	Psc
F	2	13,0	44,3	28
F	5	13,0	63,0	1
F	17	13,0	126,0	1
F	21	13,0	168,5	16
F	22	13,0	189,0	1
F	45	13,0	540,0	1