

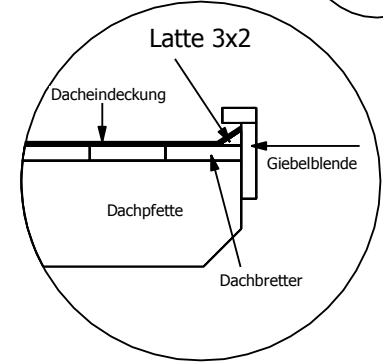
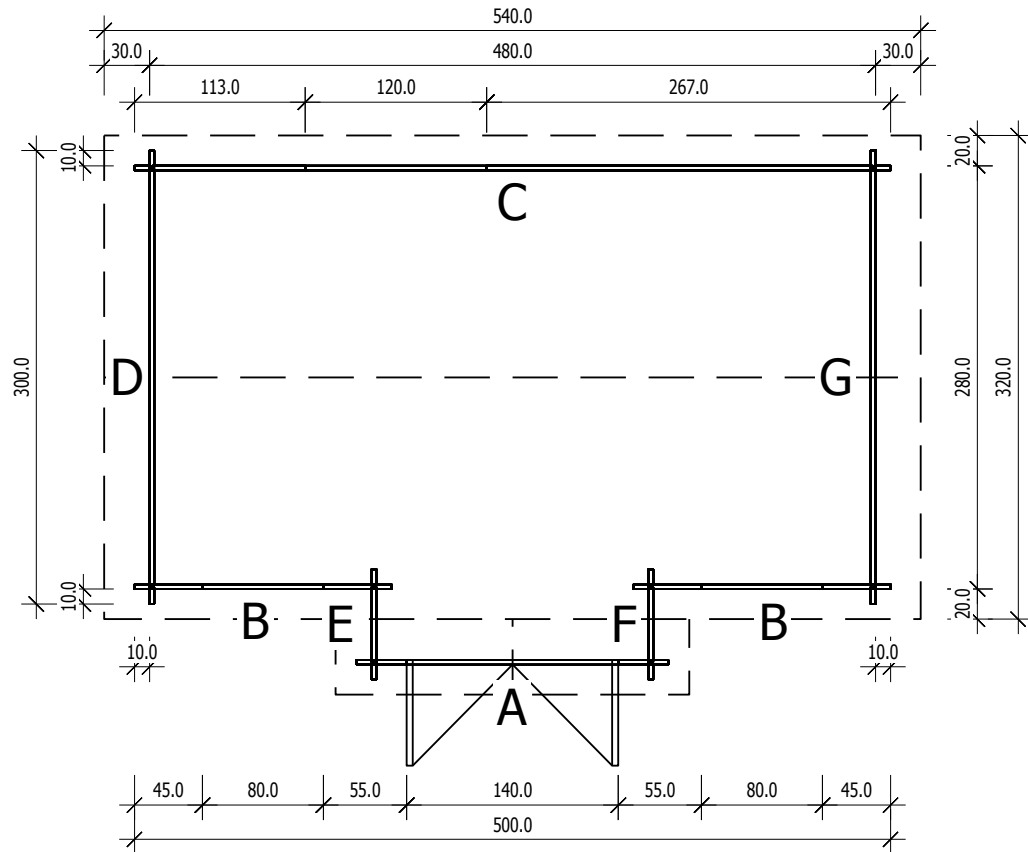


Bemerkung: die Ansicht von Turen, Fenster und anderen Teilen kann abweichen von diesem Bild

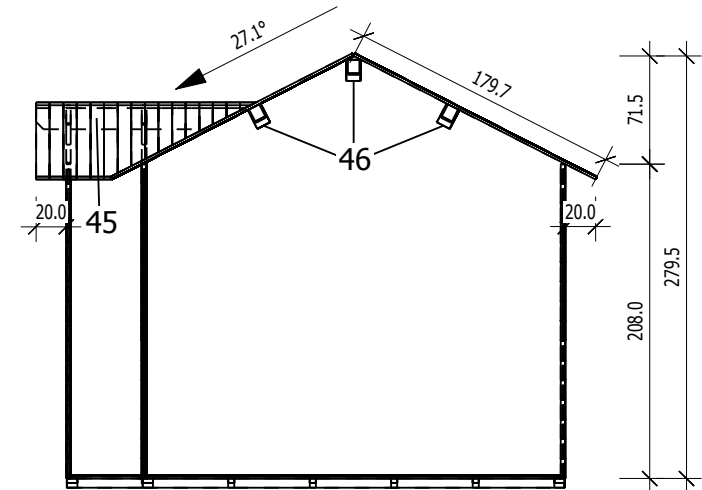


3,0

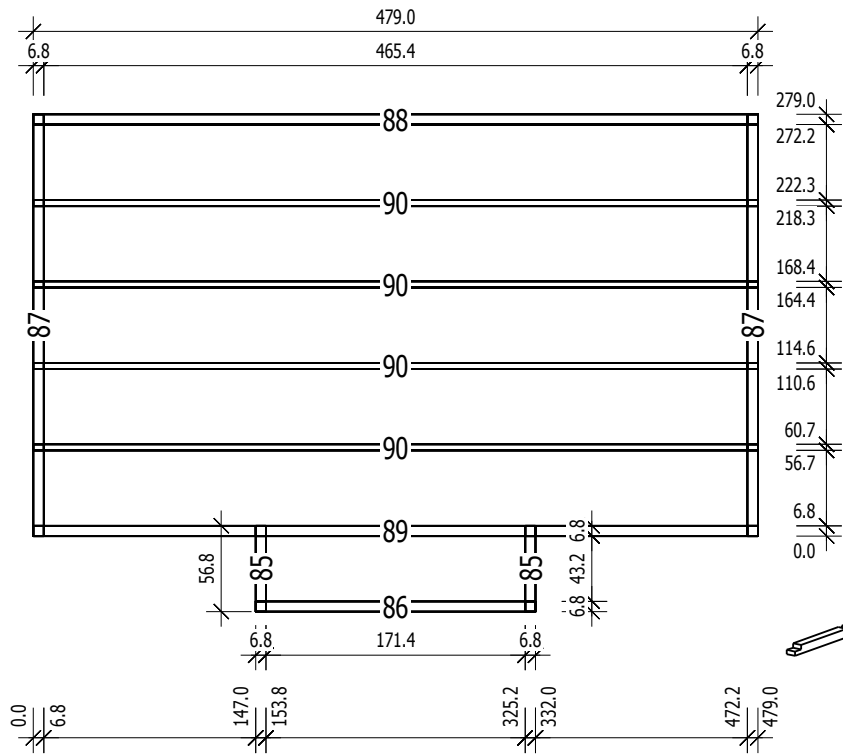
# Grundriss



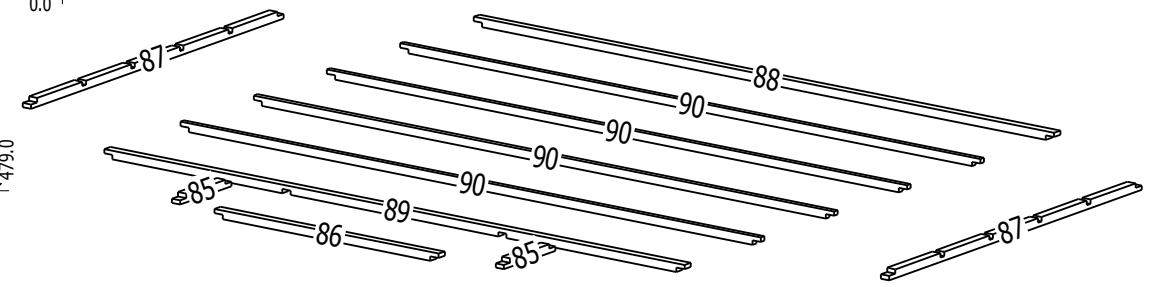
# Schnitt

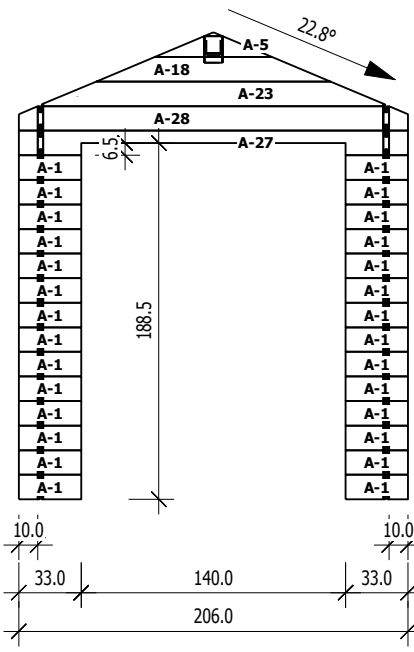


# Grundrahmenplan



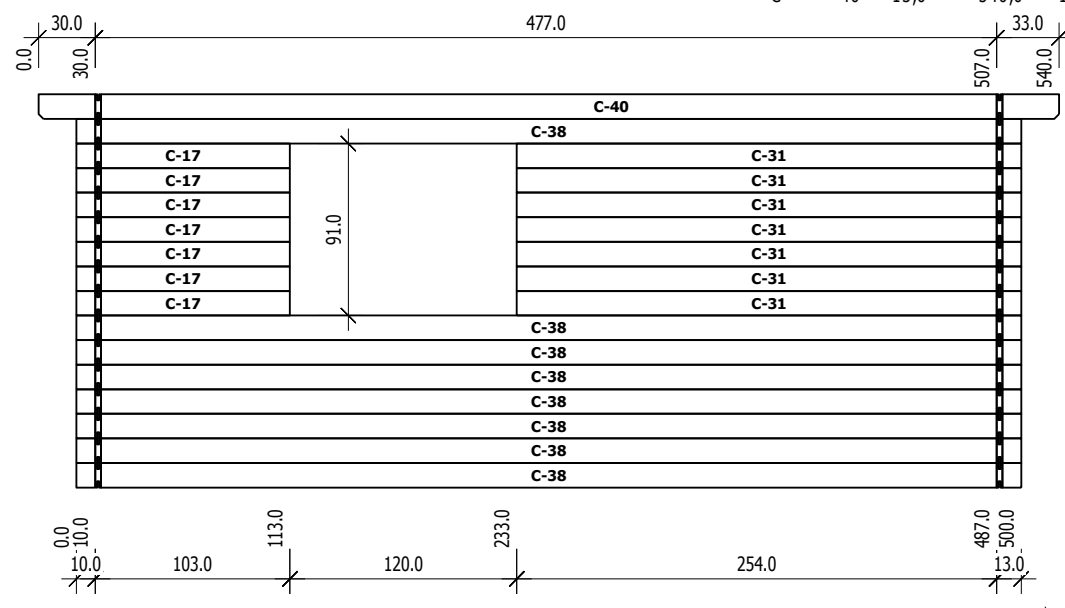
85	Pagrindas	6,8	6,0	56,8	2
86	Pagrindas	6,8	6,0	185,0	1
87	Pagrindas	6,8	6,0	279,0	2
88	Pagrindas	6,8	6,0	479,0	1
89	Pagrindas	6,8	6,0	479,0	1
90	Lages	4,0	6,0	479,0	4





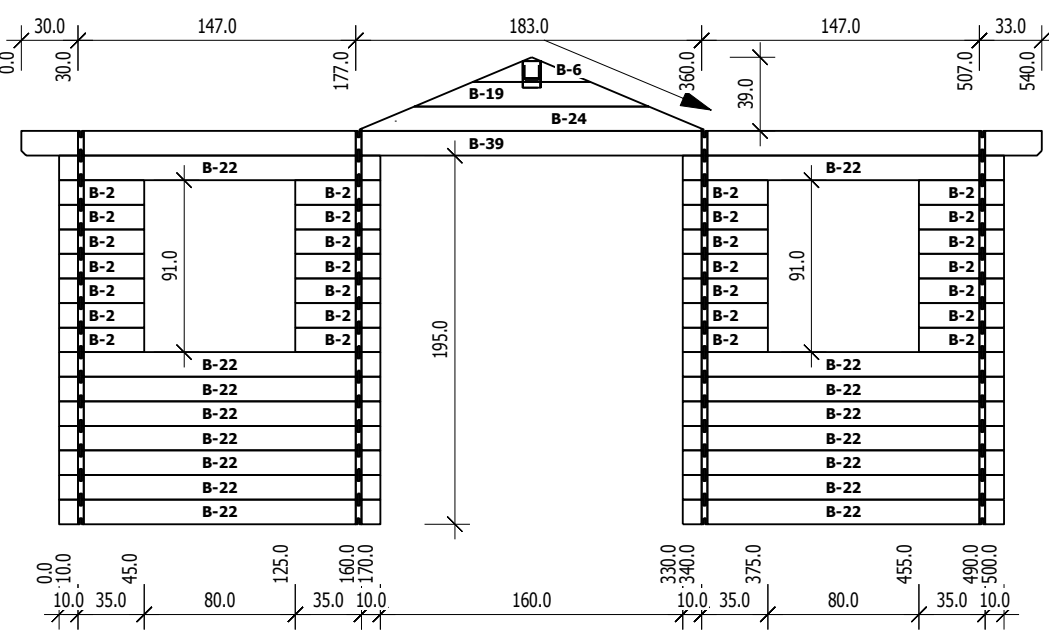
	Nr	H	L	Psc
A	1	13.0	33.0	28
A	5	13.0	62.0	1
A	18	13.0	124.0	1
A	23	13.0	182.0	1
A	27	13.0	206.0	1
A	28	13.0	206.0	1

C  
M 1:40



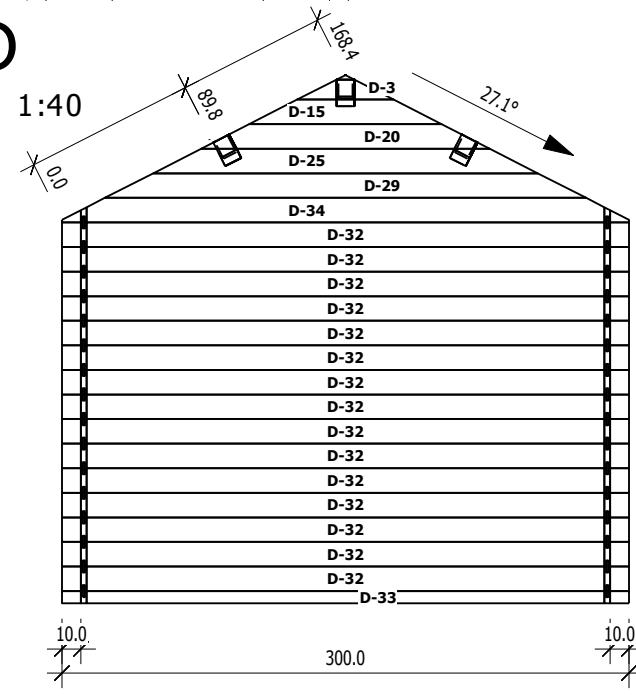
	Nr	H	L	Psc
C	17	13.0	113.0	7
C	31	13.0	267.0	7
C	38	13.0	500.0	8
C	40	13.0	540.0	1

B  
M 1:40



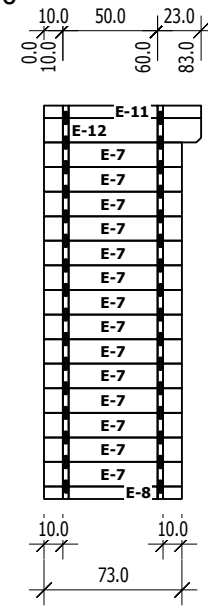
	Nr	H	L	Psc
B	2	13.0	45.0	28
B	6	13.0	62.0	1
B	19	13.0	124.0	1
B	22	13.0	170.0	16
B	24	13.0	182.0	1
B	39	13.0	540.0	1

D  
M 1:40



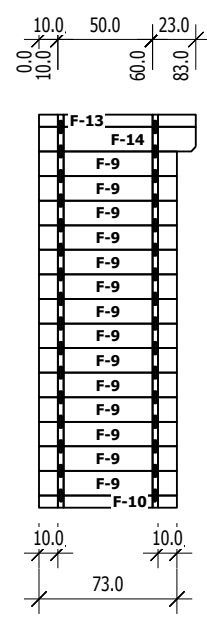
	Nr	H	L	Psc
D	3	13.0	50.9	1
D	15	13.0	101.8	1
D	20	13.0	152.7	1
D	25	13.0	203.6	1
D	29	13.0	254.5	1
D	32	13.0	300.0	15
D	33	6.5	300.0	1
D	34	13.0	300.0	1

E  
M 1:40



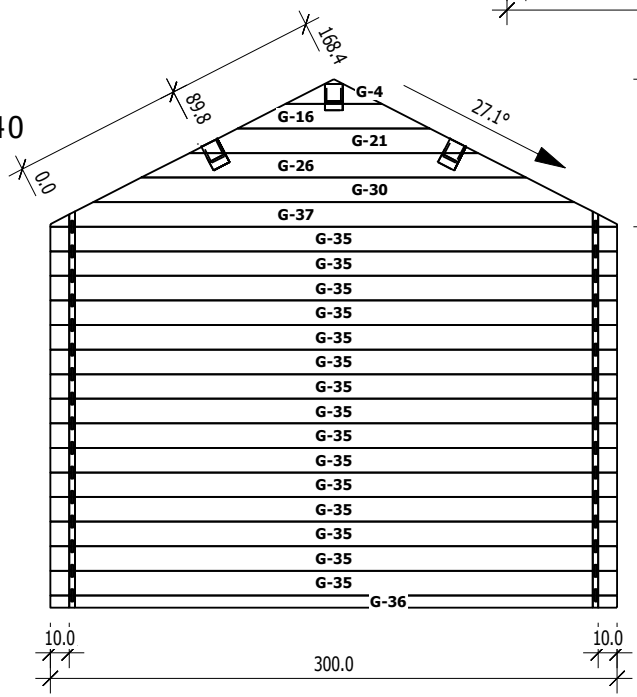
	Nr	H	L	Psc
E	7	13.0	73.0	14
E	8	6.5	73.0	1
E	11	6.5	83.0	1
E	12	13.0	83.0	1

F  
M 1:40



	Nr	H	L	Psc
F	9	13.0	73.0	14
F	10	6.5	73.0	1
F	13	6.5	83.0	1
F	14	13.0	83.0	1

G  
M 1:40



	Nr	H	L	Psc
G	4	13.0	50.9	1
G	16	13.0	101.8	1
G	21	13.0	152.7	1
G	26	13.0	203.6	1
G	30	13.0	254.5	1
G	35	13.0	300.0	15
G	36	6.5	300.0	1
G	37	13.0	300.0	1