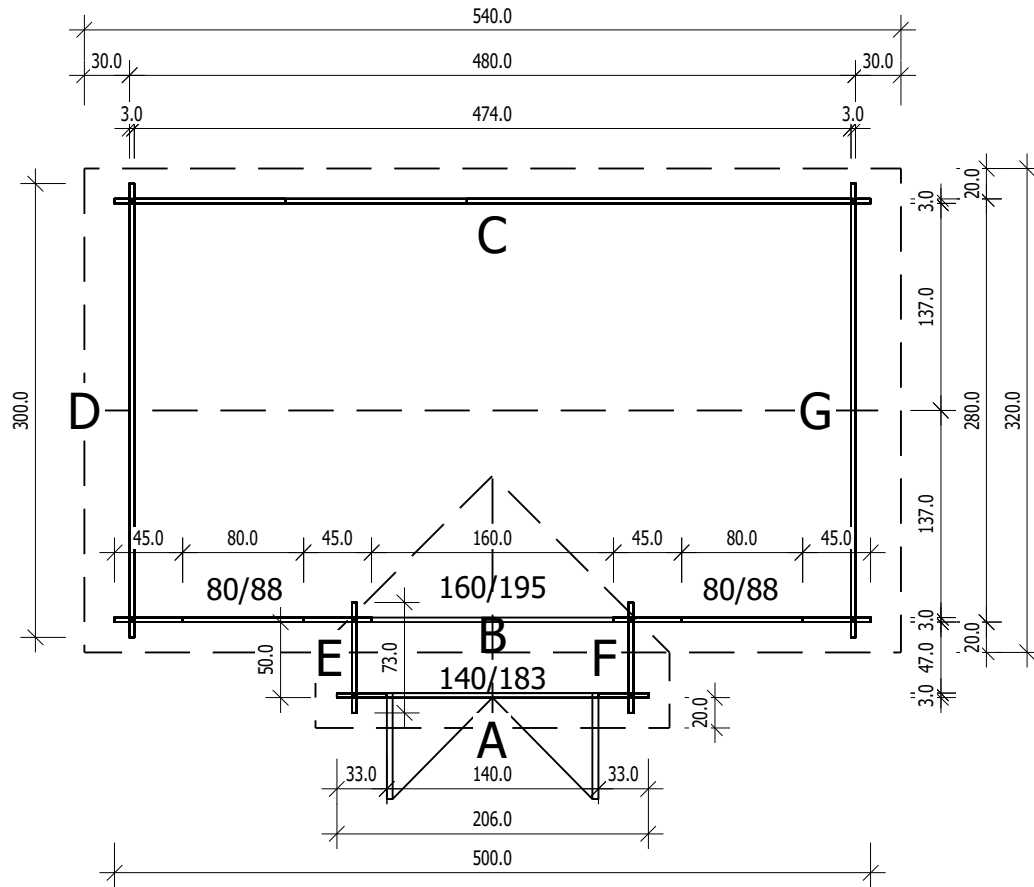


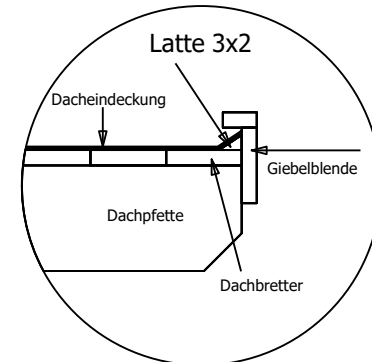
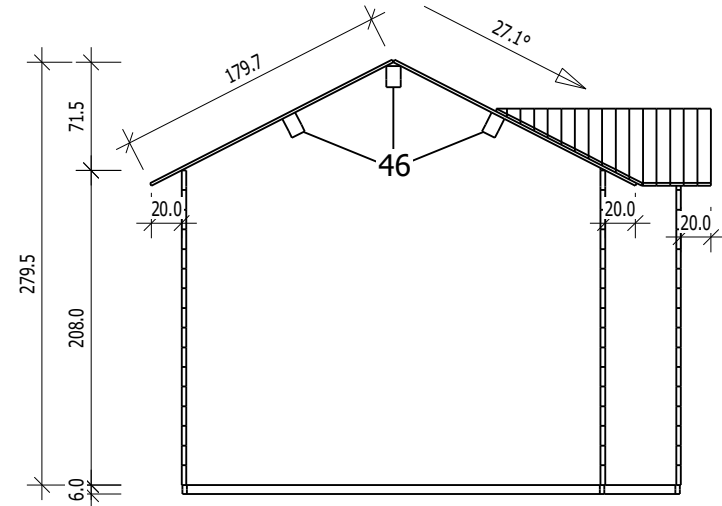


Bemerkung: die Ansicht von Turen, Fenster und anderen Teilen kann abweichen von diesem Bild

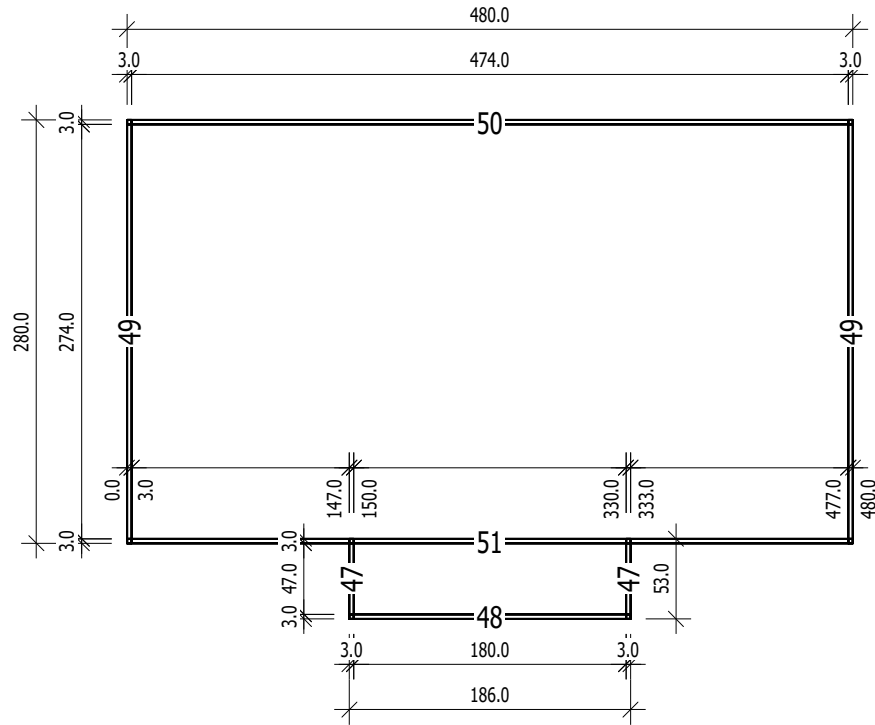
# Grundriss



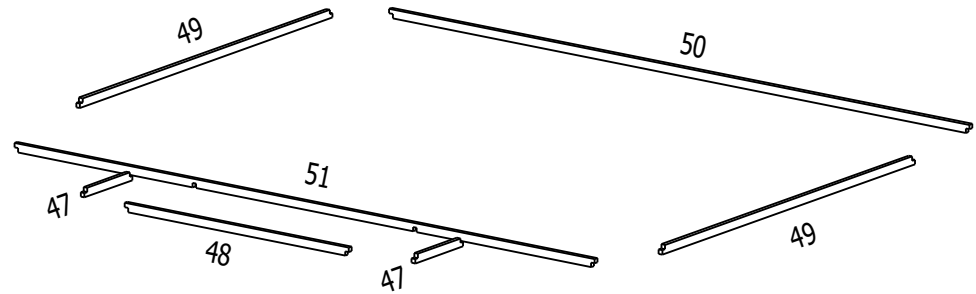
# Schnitt



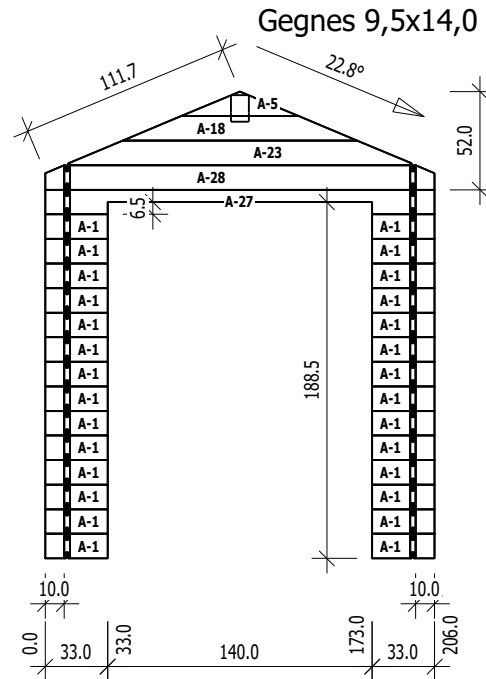
# Grundrahmenplan



Nr.	B	H	L	Psc
	[cm]	[cm]	[cm]	
47	3,0	6,0	53,0	2
48	3,0	6,0	186,0	1
49	3,0	6,0	280,0	2
50	3,0	6,0	480,0	1
51	3,0	6,0	480,0	1



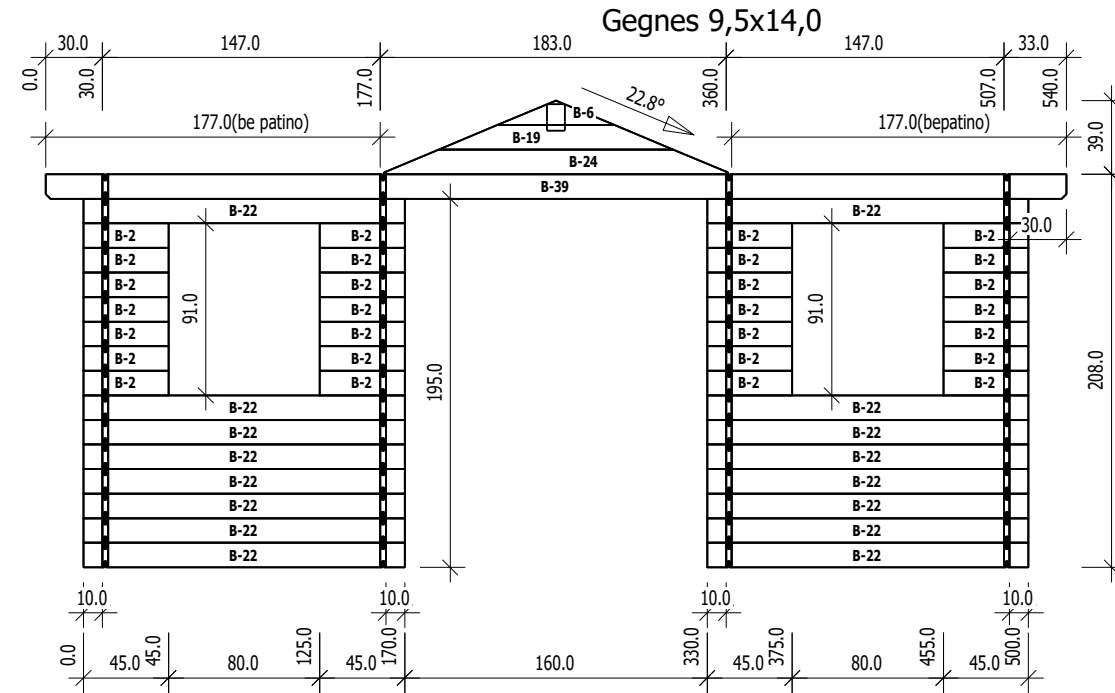
**A**  
M 1:40



Ansicht von Aussen

Nr	H	L	Psc
A 1	13.0	33.0	28
A 5	13.0	62.0	1
A 18	13.0	124.0	1
A 23	13.0	182.0	1
A 27	13.0	206.0	1
A 28	13.0	206.0	1
			33

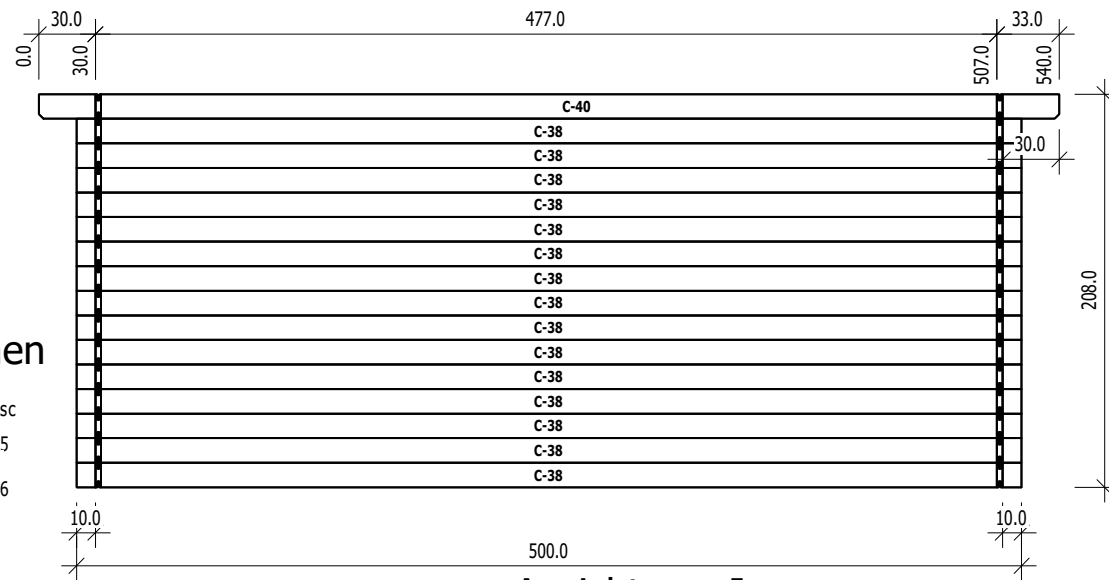
**B**  
M 1:40



Ansicht von Aussen

Nr	H	L	Psc
B 2	13.0	45.0	28
B 6	13.0	62.0	1
B 19	13.0	124.0	1
B 22	13.0	170.0	16
B 24	13.0	182.0	1
B 39	13.0	540.0	1
			48

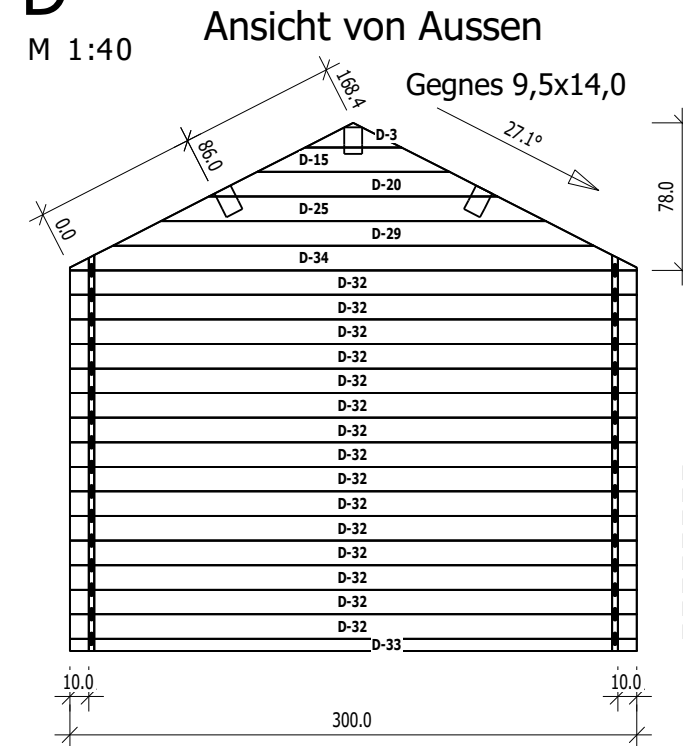
**C**  
M 1:40



Ansicht von Innen

Nr	H	L	Psc
C 38	13.0	500.0	15
C 40	13.0	540.0	1
			16

**D**  
M 1:40

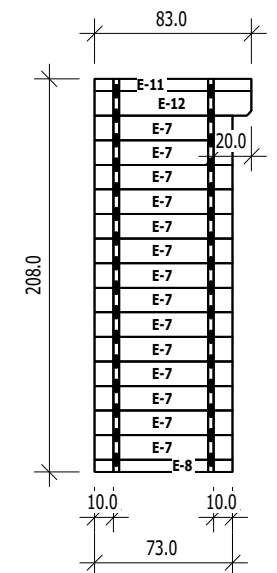


Ansicht von Aussen

Nr	H	L	Psc
D 3	13.0	50.9	1
D 15	13.0	101.8	1
D 20	13.0	152.7	1
D 25	13.0	203.6	1
D 29	13.0	254.5	1
D 32	13.0	300.0	15
D 33	6.5	300.0	1
D 34	13.0	300.0	1
			22

**E**  
M 1:40

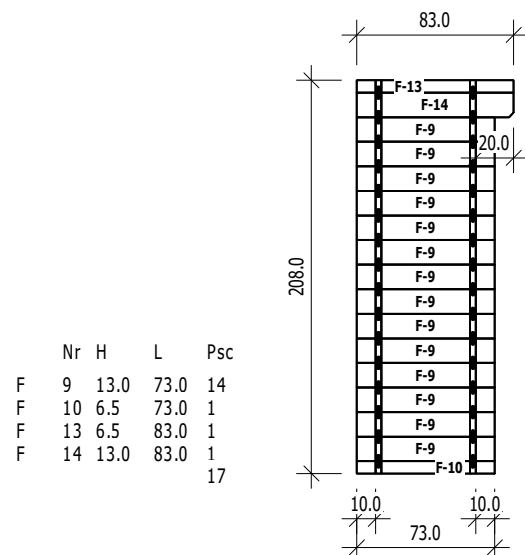
Ansicht von Aussen



Nr	H	L	Psc
E 7	13.0	73.0	14
E 8	6.5	73.0	1
E 11	6.5	83.0	1
E 12	13.0	83.0	1

**F**  
M 1:40

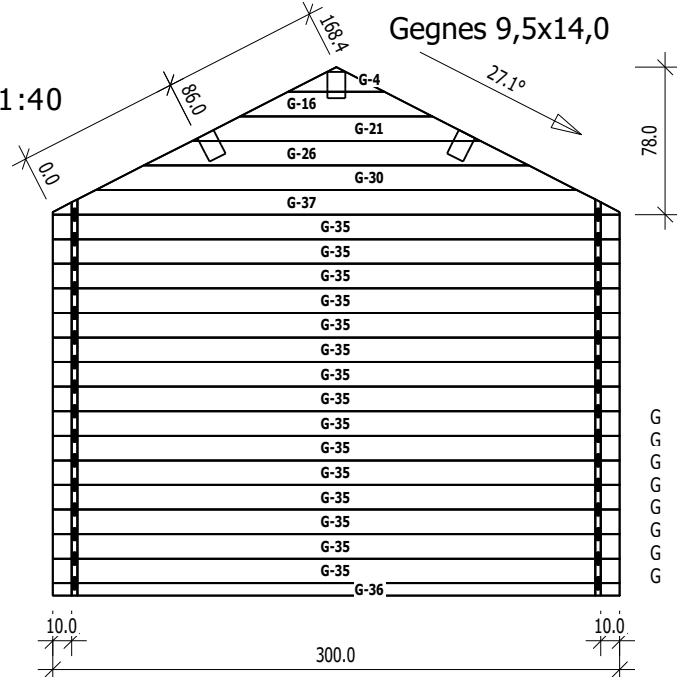
Ansicht von Innen



Nr	H	L	Psc
F 9	13.0	73.0	14
F 10	6.5	73.0	1
F 13	6.5	83.0	1
F 14	13.0	83.0	1
			17

**G**  
M 1:40

Ansicht von Innen



Nr	H	L	Psc
G 4	13.0	50.9	1
G 16	13.0	101.8	1
G 21	13.0	152.7	1
G 26	13.0	203.6	1
G 30	13.0	254.5	1
G 35	13.0	300.0	15
G 36	6.5	300.0	1
G 37	13.0	300.0	1
			22