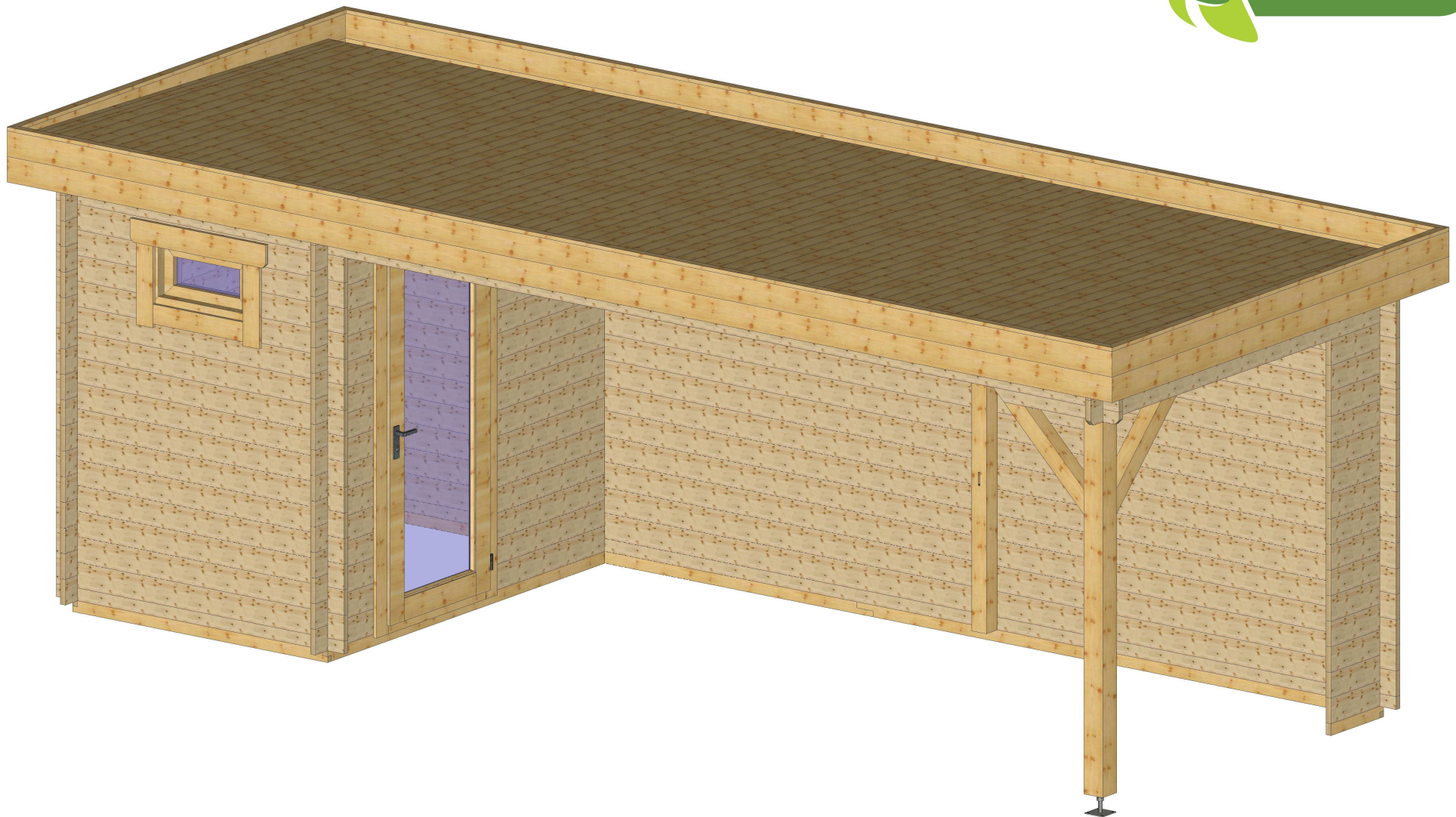
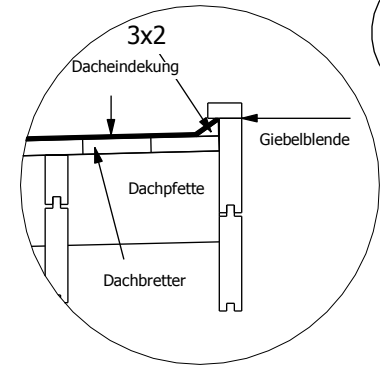
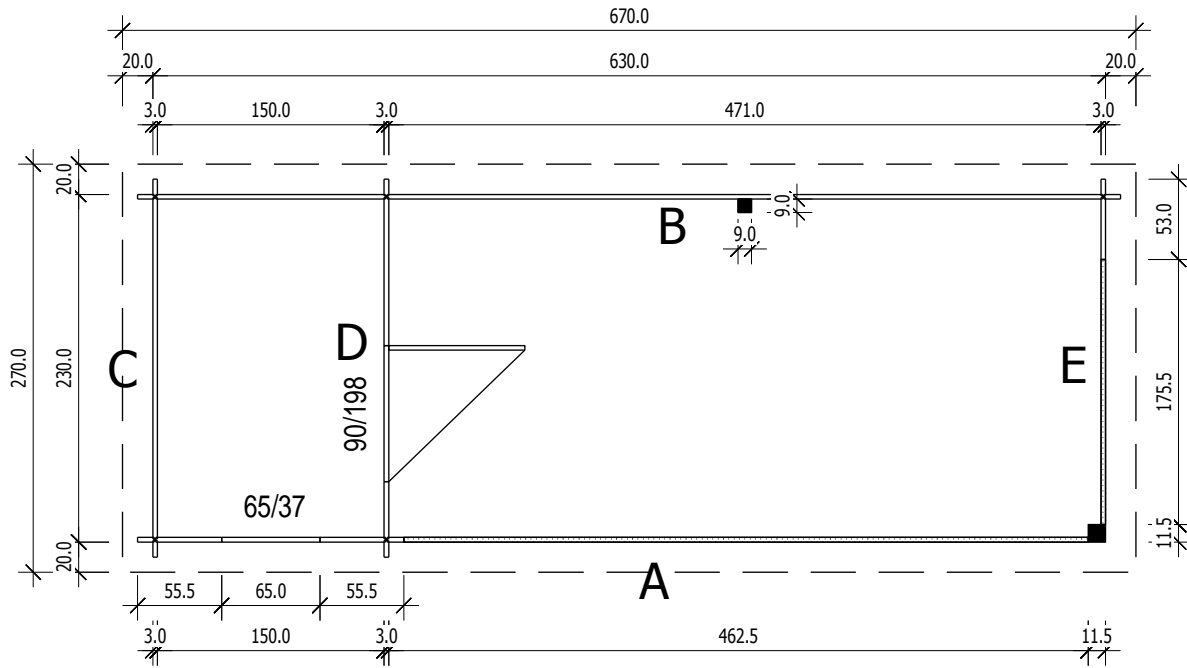


Edith-6525 Typ

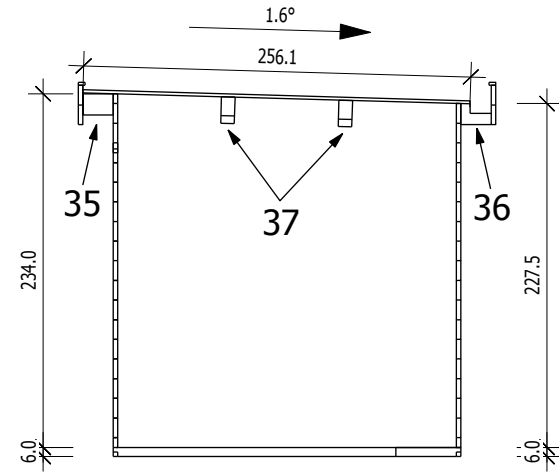


Bemerkung: die Ansicht von Turen, Fenster und anderen Teilen kann abweichen von diesem Bild

Grundriss

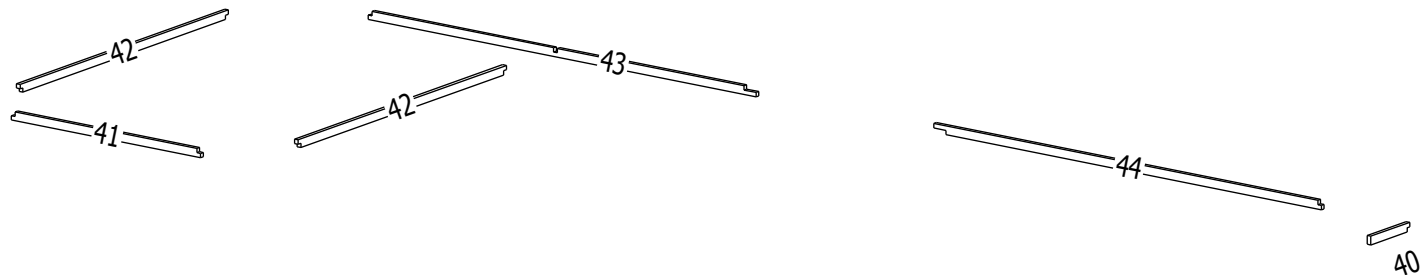
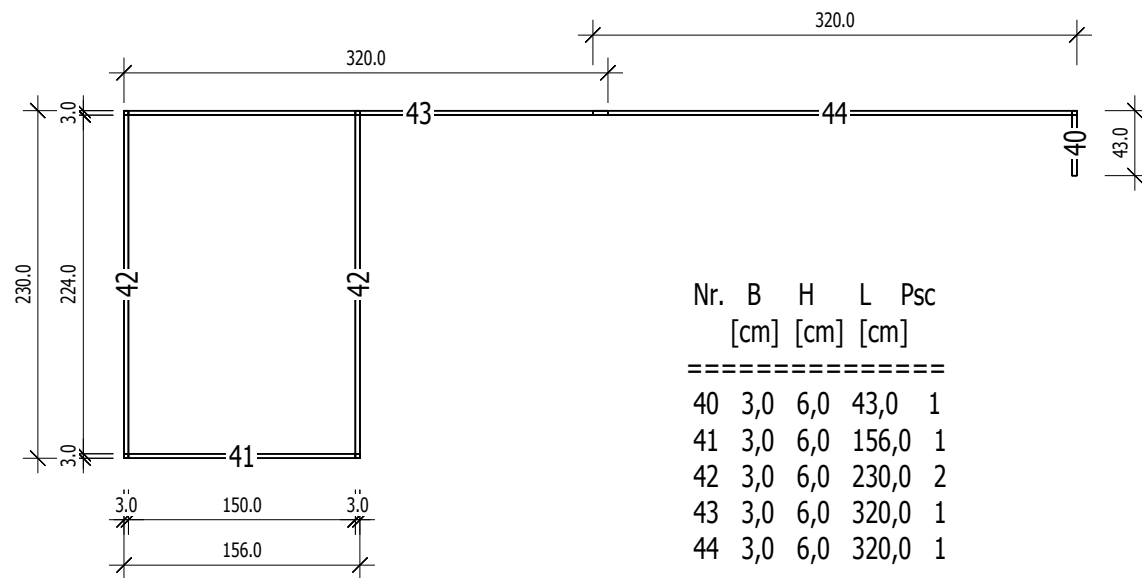
 $3,0)$

Schnitt



Grundrahmenplan

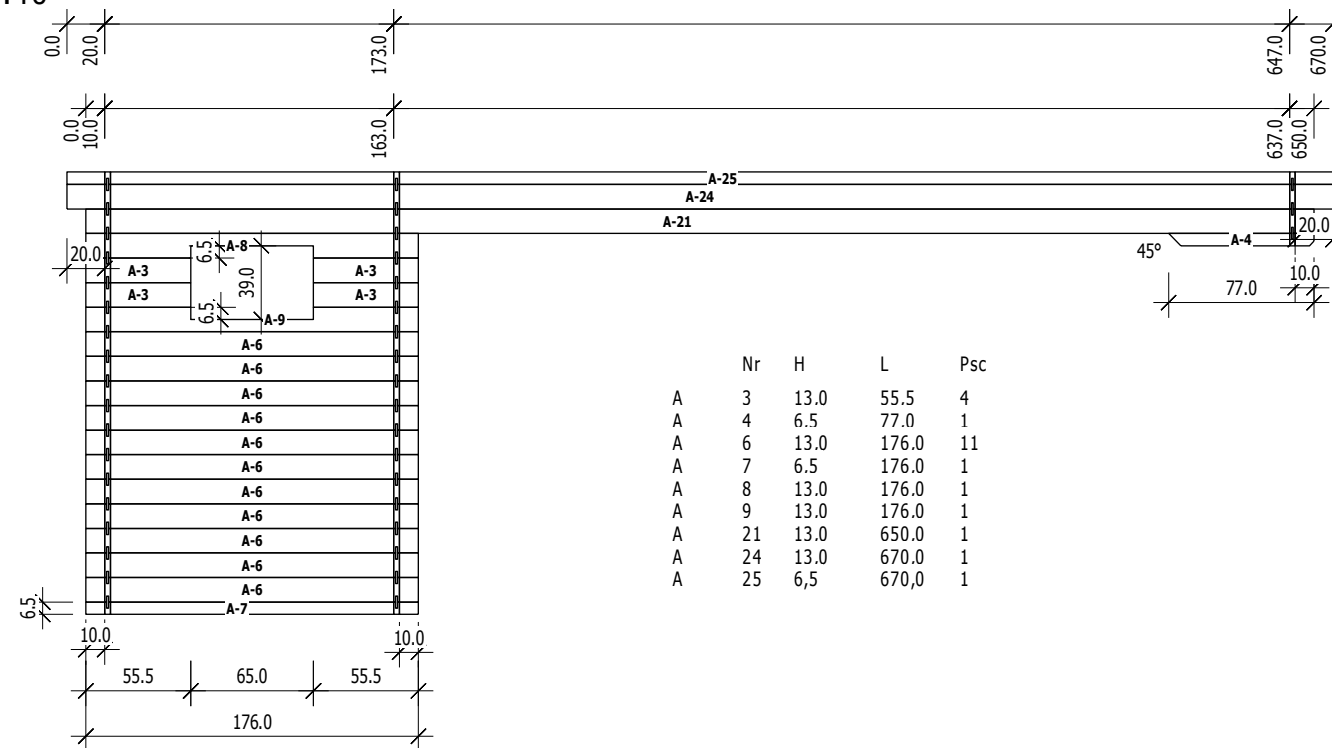
3,0



A

M 1:40

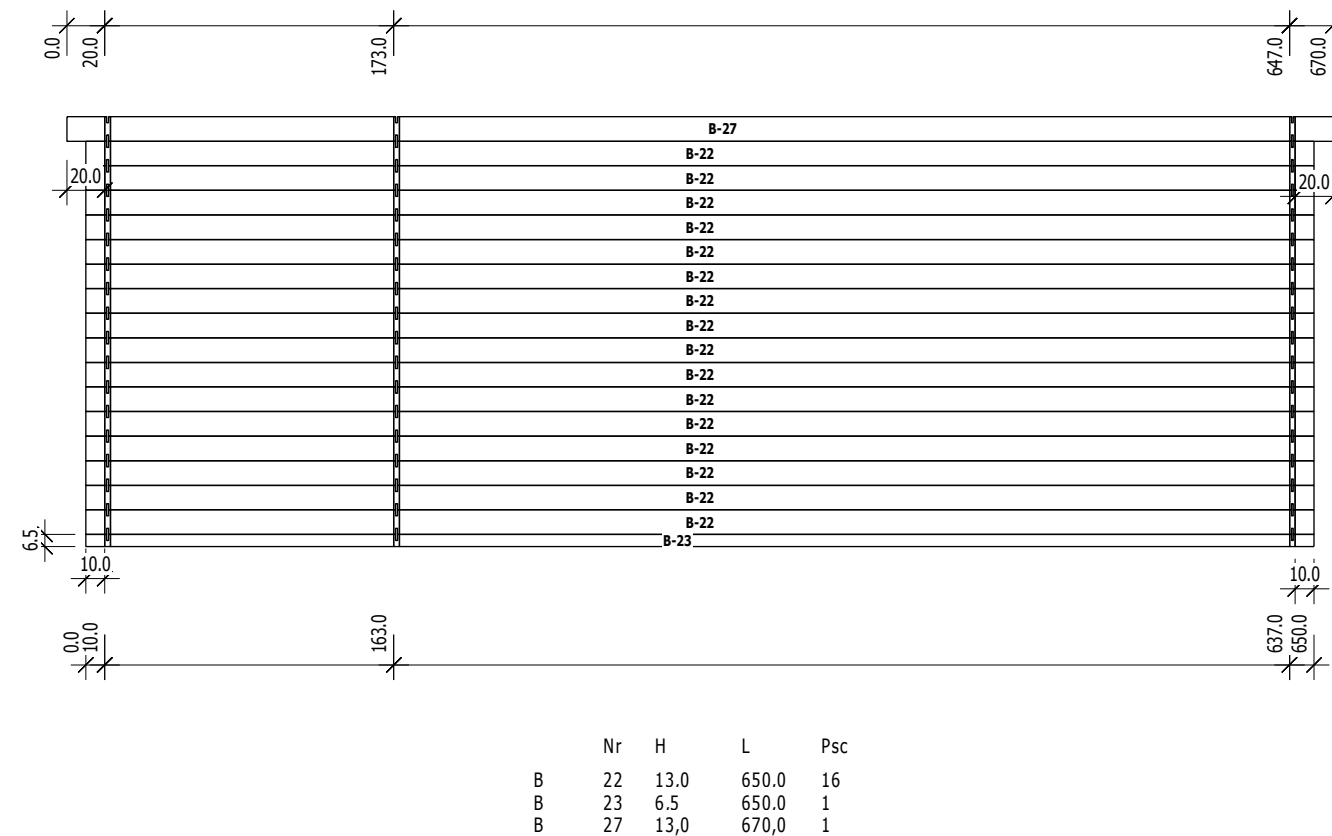
Ansicht von Aussen



B

M 1:40

Ansicht von Innen

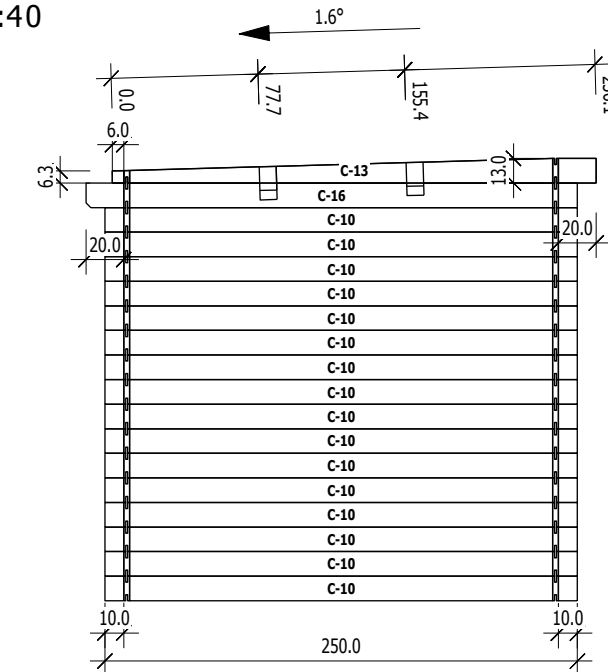


C

M 1:40

Ansicht von Aussen

9,0x17,5

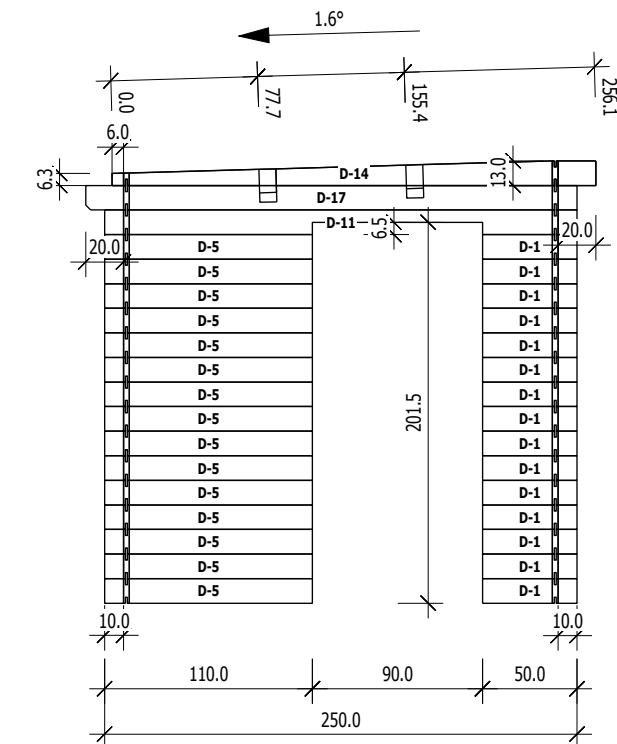


D

M 1:40

Ansicht von Innen

9,0x17,5



3,0

E

M 1:40

9,0x17,5

Ansicht von Innen

