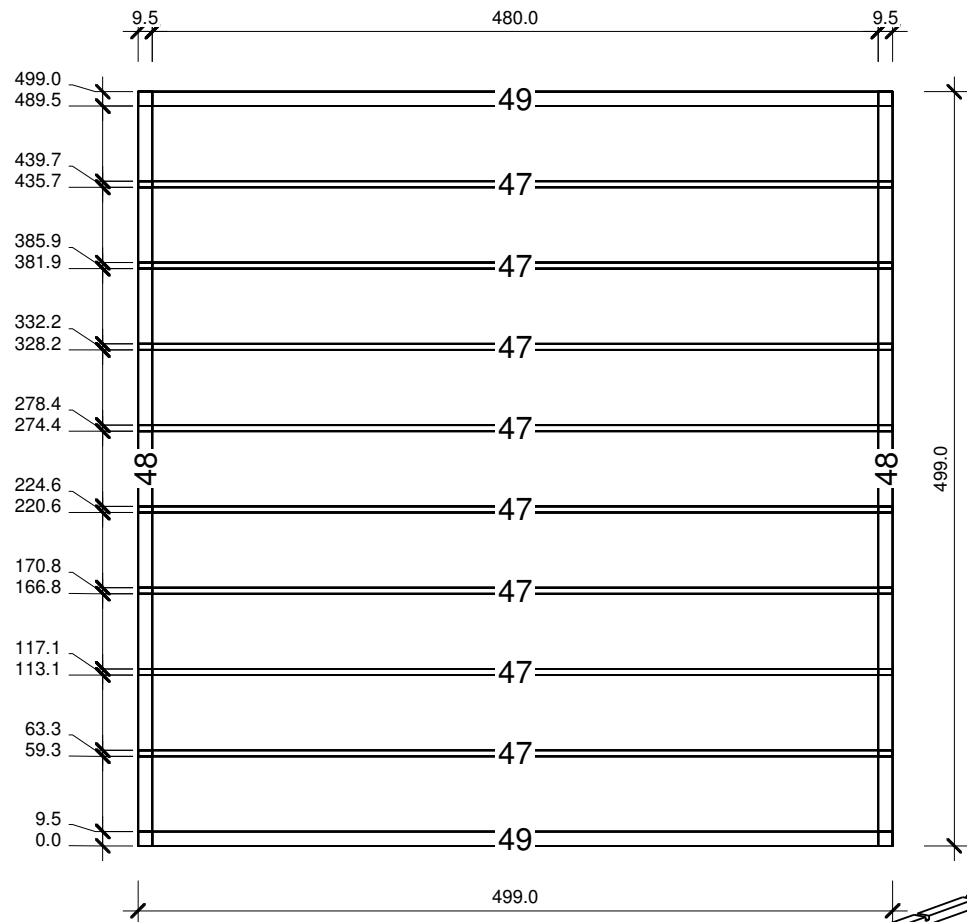
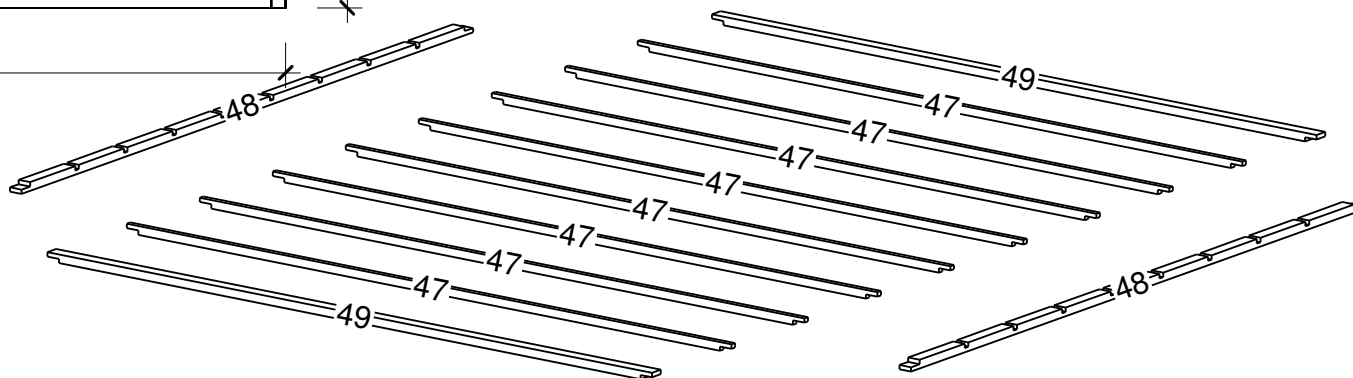


		1 : 50

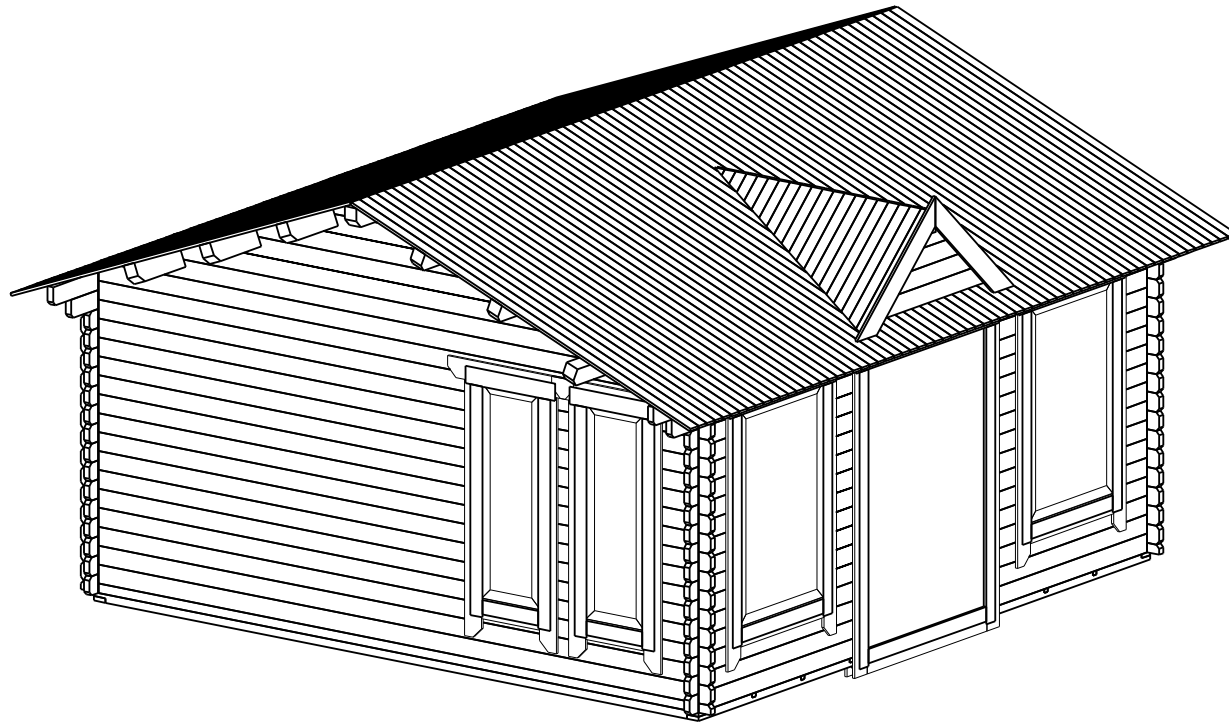


47;Lages;4x6x499; 8vnt.
 48;Pagrindas;9,5x6x499; 2vnt.
 49;Pagrindas;9,5x6x499; 2vnt.

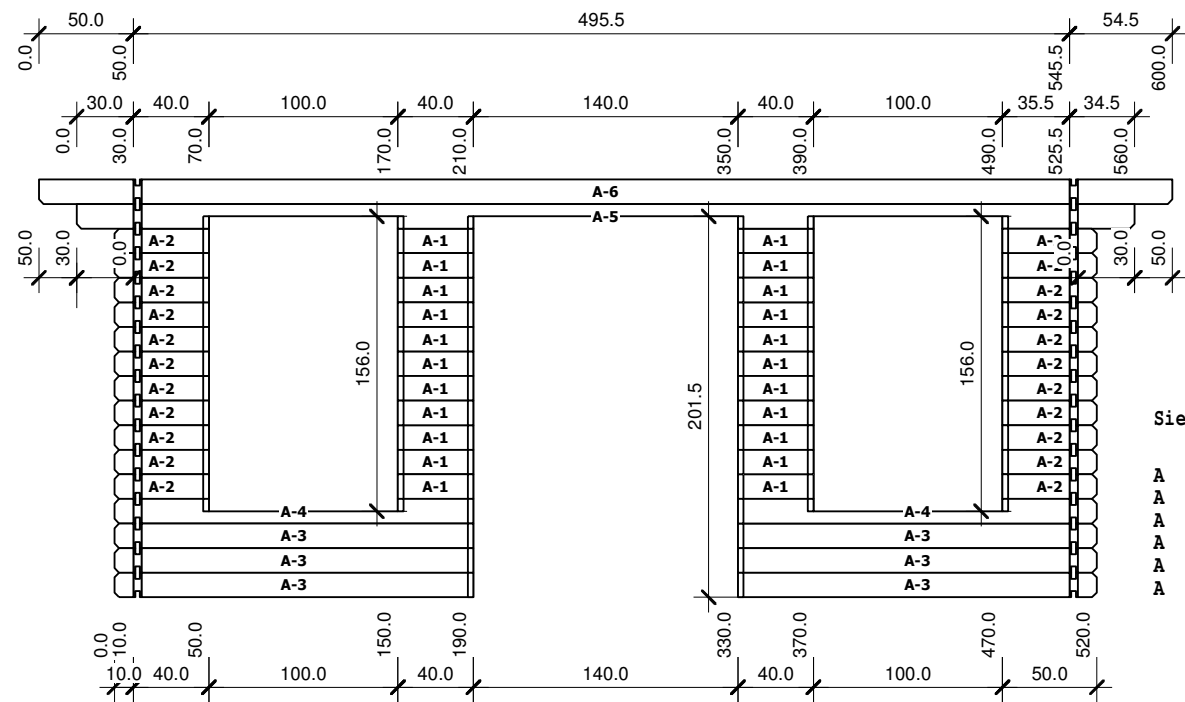


		1 :50

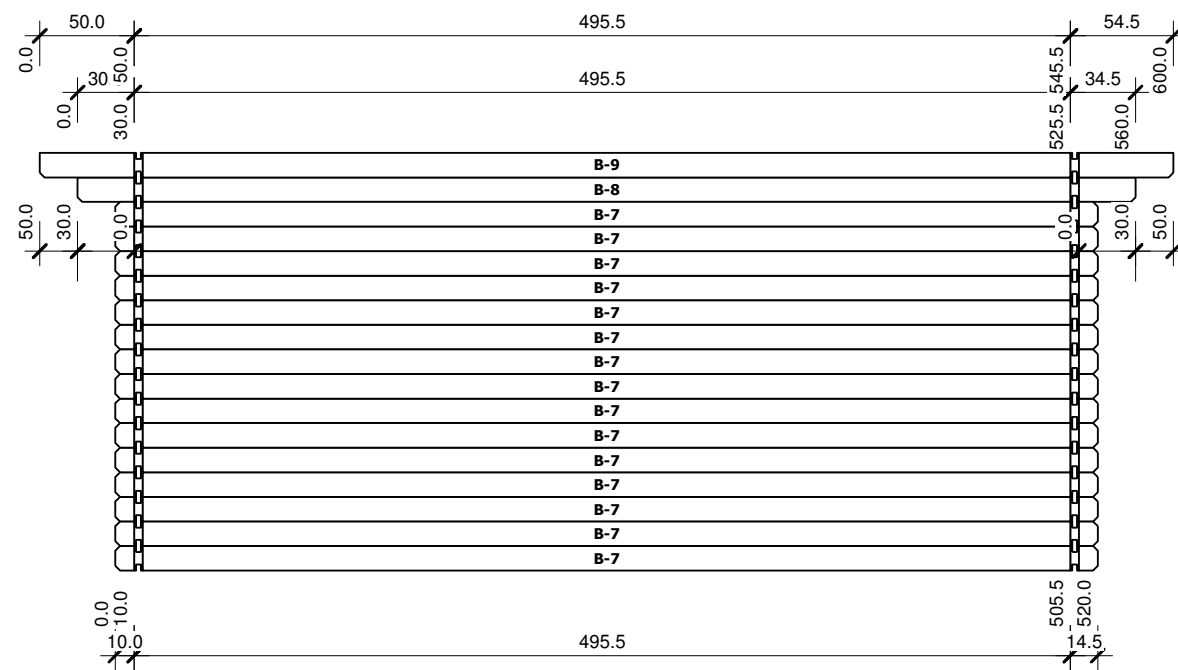
Bemerkung: die Ansicht von Turen, Fenster und anderen Teilen kann abweichen von diesem Bild



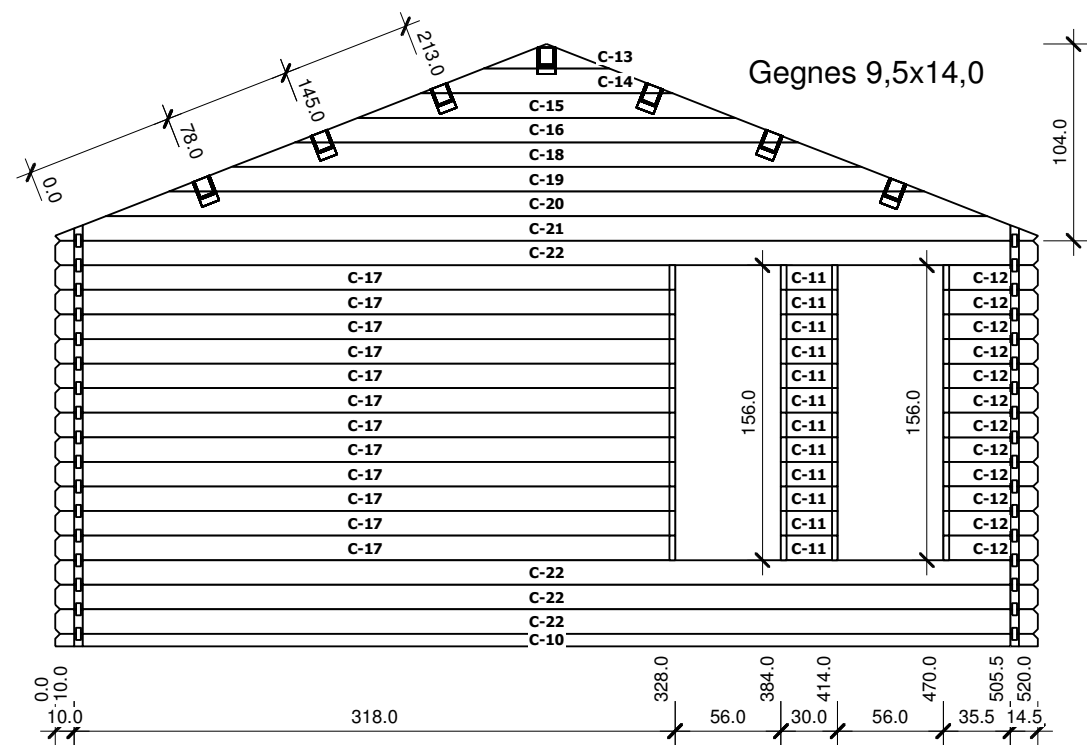
		1 :50



Sienos brezinys			
Nr	H	L	Psc
A 1	13,0	40,0	22
A 2	13,0	50,0	22
A 3	13,0	190,0	6
A 4	13,0	190,0	2
A 5	13,0	560,0	1
A 6	13,0	600,0	1



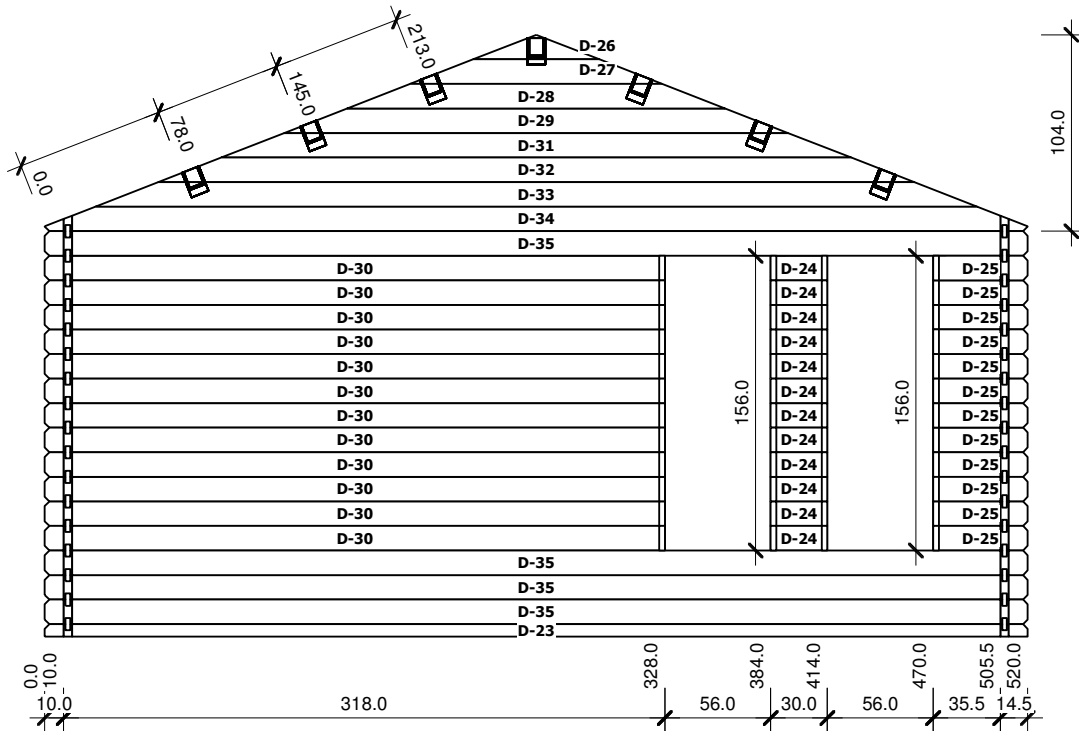
Sienos brezinys			
Nr	H	L	Psc
B 7	13,0	520,0	15
B 8	13,0	560,0	1
B 9	13,0	600,0	1



Sienos brezinys			
Nr	H	L	Psc
C 11	13,0	30,0	12
C 12	13,0	50,0	12
C 13	13,0	66,7	1
C 14	13,0	133,3	1
C 15	13,0	200,0	1
C 16	13,0	266,7	1
C 17	13,0	328,0	12
C 18	13,0	333,3	1
C 19	13,0	400,0	1
C 20	13,0	466,7	1
C 22	13,0	520,0	4
C 10	6,5	520,0	1
C 21	13,0	520,0	1

D

M 1:40



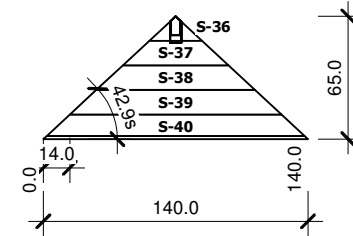
Sienos brezinys

Nr	H	L	Psc
D 24	13,0	30,0	12
D 25	13,0	50,0	12
D 26	13,0	66,7	1
D 27	13,0	133,3	1
D 28	13,0	200,0	1
D 29	13,0	266,7	1
D 30	13,0	328,0	12
D 31	13,0	333,3	1
D 32	13,0	400,0	1
D 33	13,0	466,7	1
D 35	13,0	520,0	4
D 23	6,5	520,0	1
D 34	13,0	520,0	1

S

M 1:40

Gegne 6,0x14,0



Sienos brezinys

Nr	H	L	Psc
S 36	10,7	28,0	1
S 37	13,0	56,0	1
S 38	13,0	84,0	1
S 39	13,0	112,0	1
S 40	13,0	140,0	1

		1 : 40