

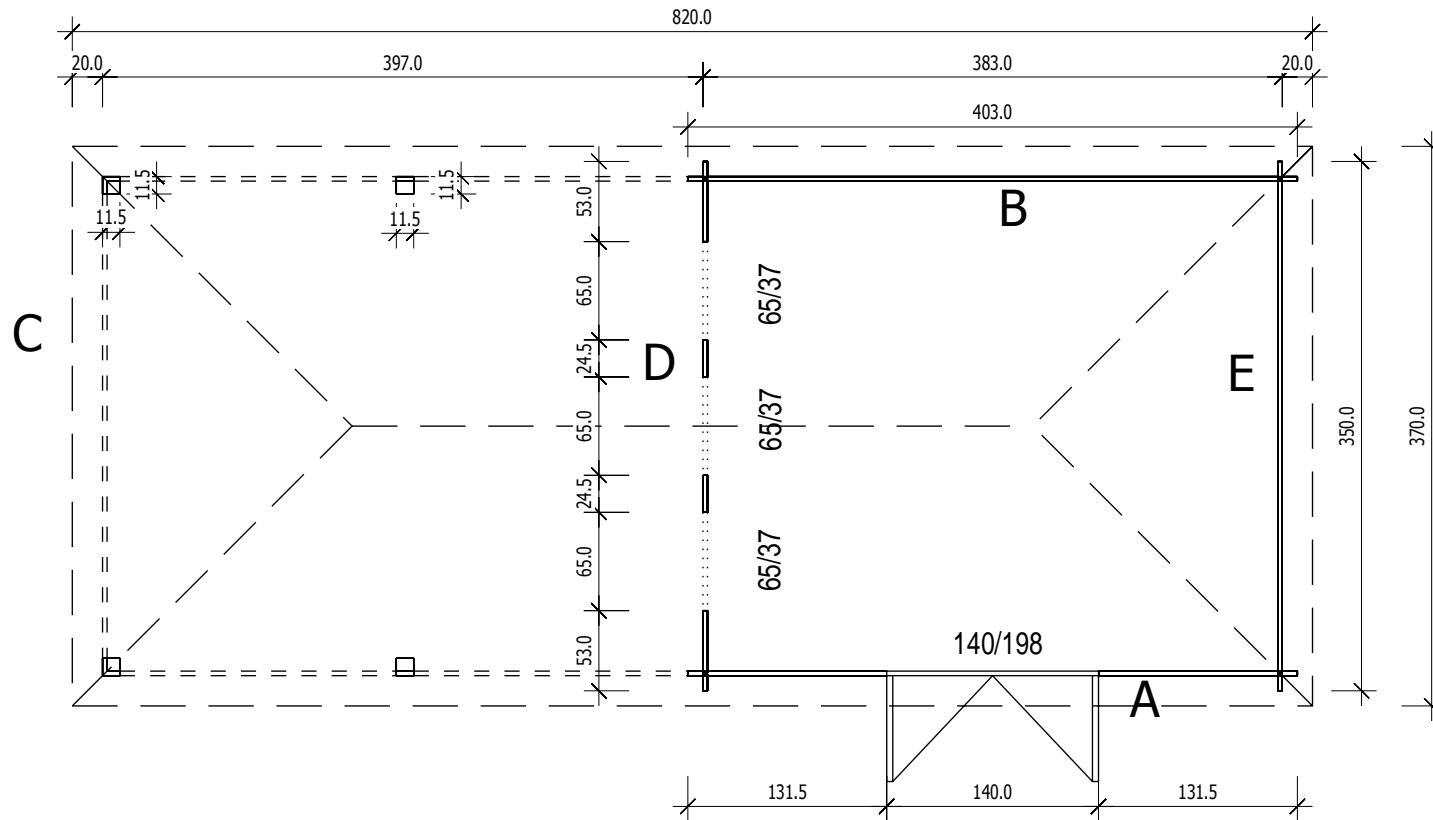


Bemerkung: die Ansicht von Turen, Fenster und anderen Teilen kann abweichen von diesem Bild



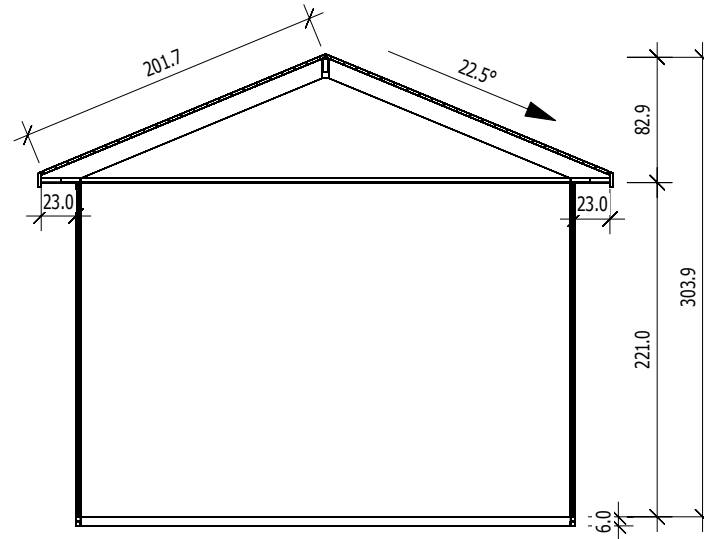
3,0

Grundriss

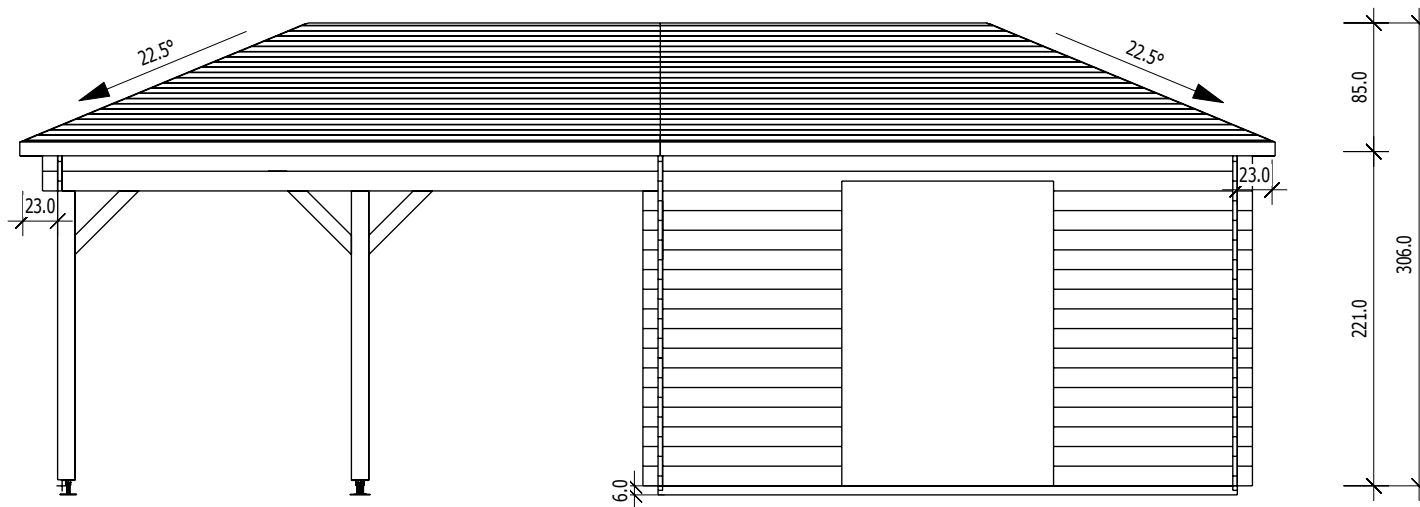


Schnitt 4,5x14,0

3,0

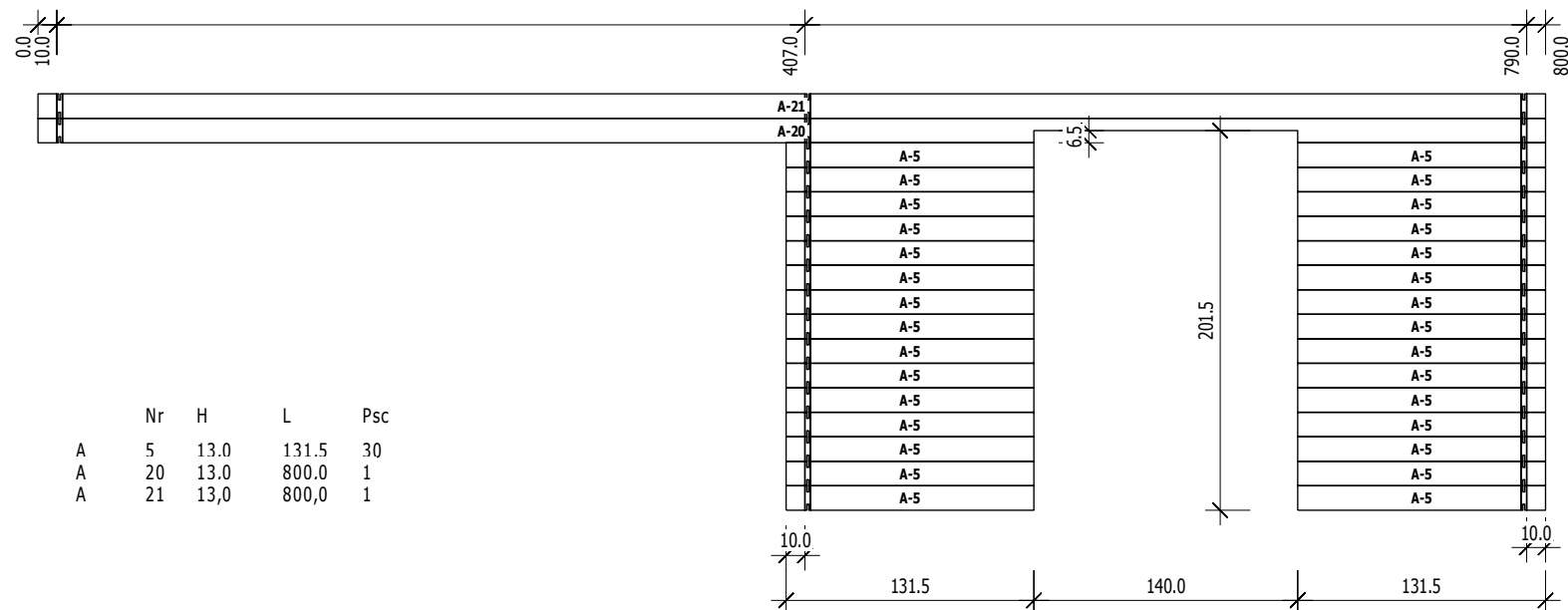


Schnitt



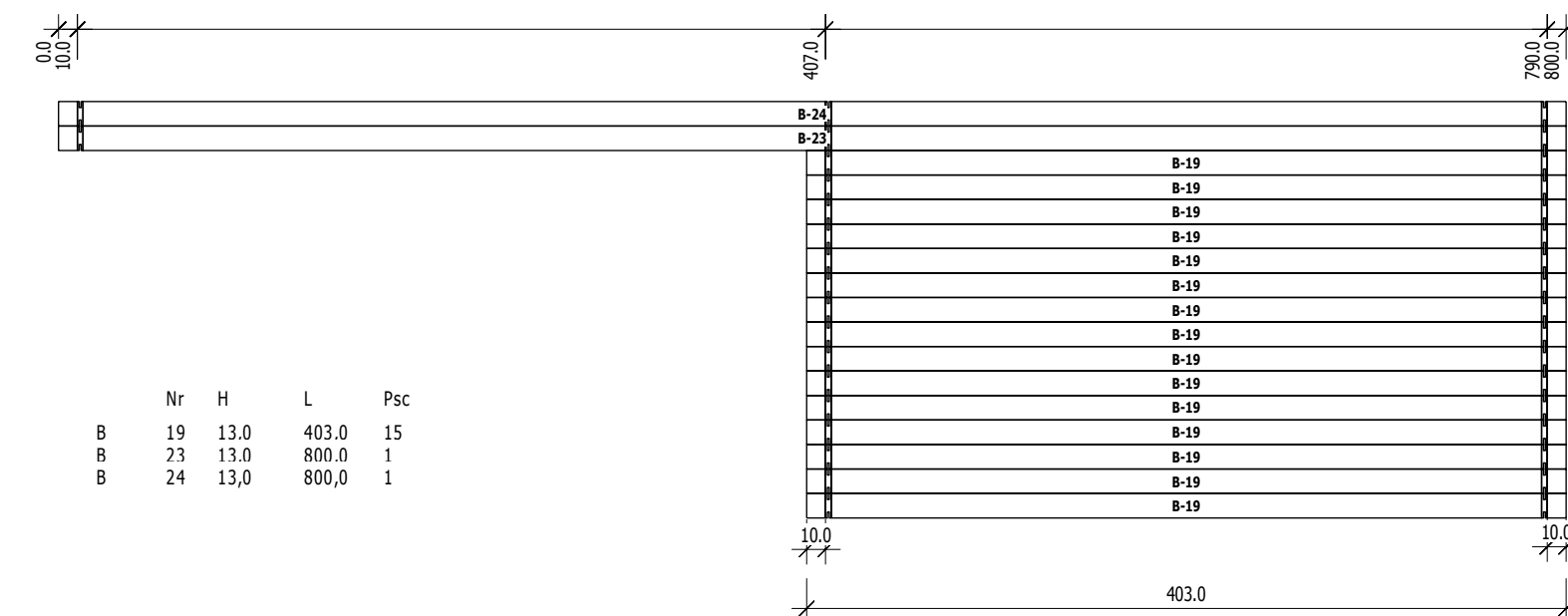
A

M 1:40



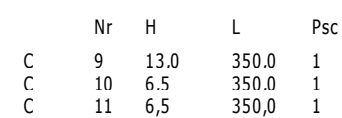
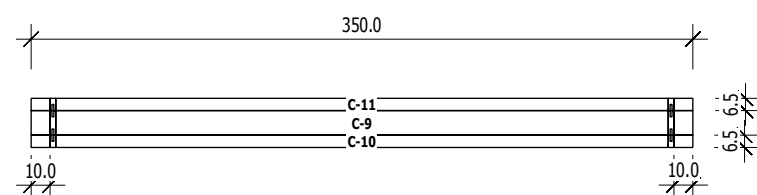
B

M 1:40



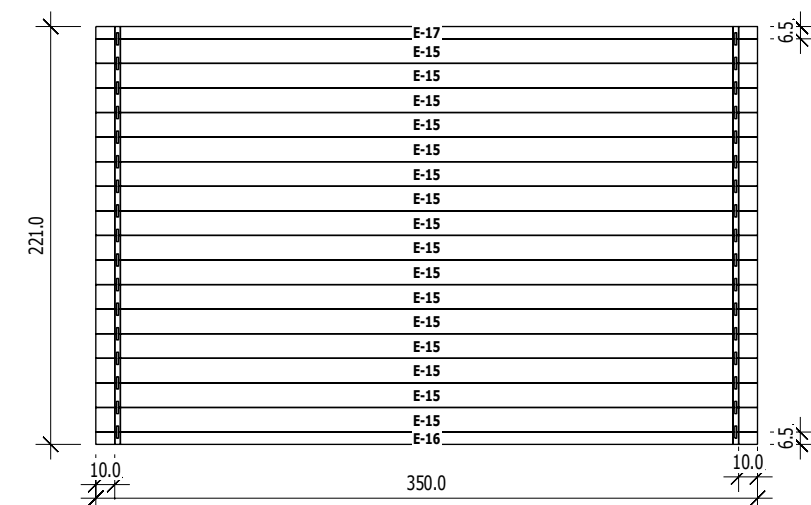
C

M 1:40



E

M 1:40

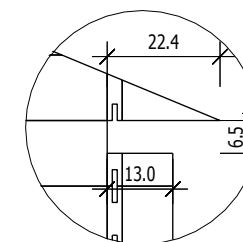
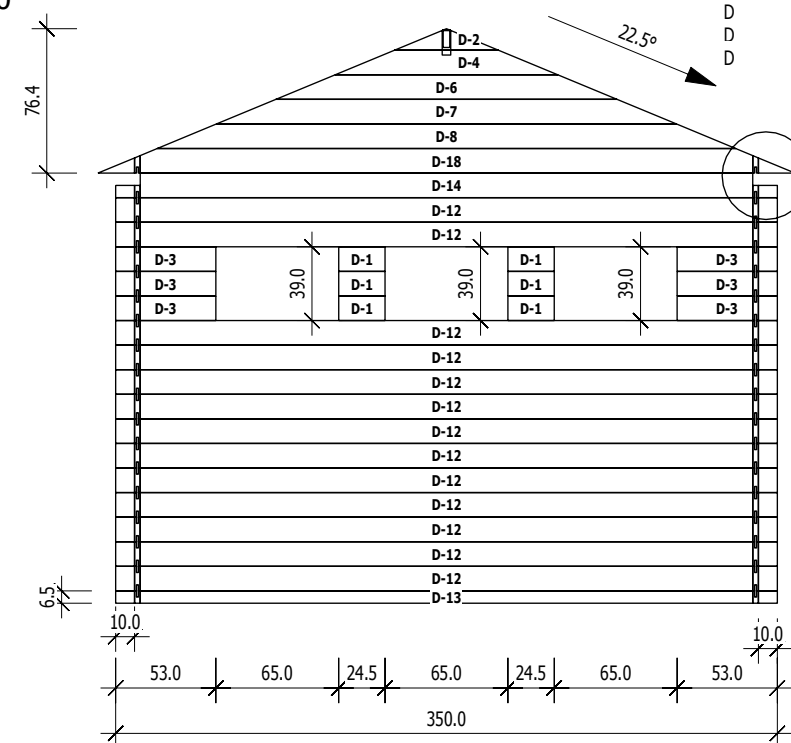


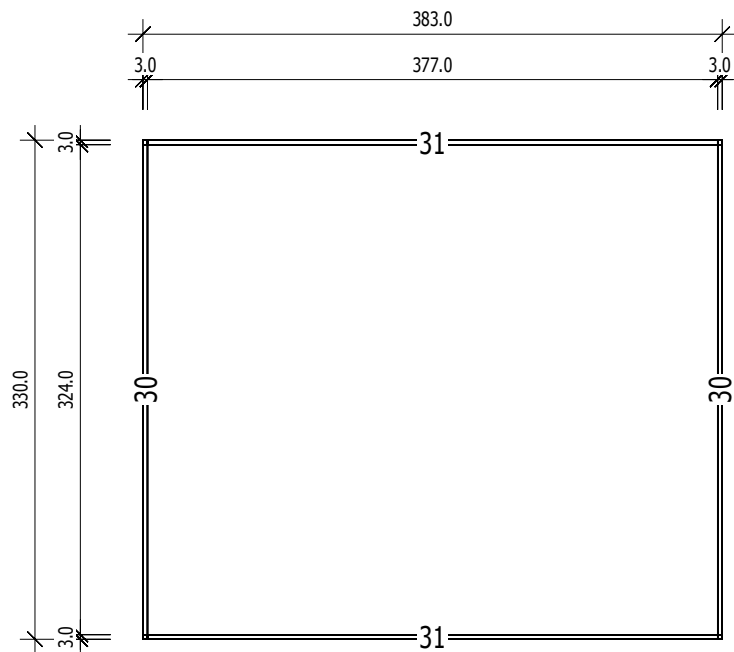
	Nr	H	L	Psc
E	15	13.0	350.0	16
E	16	6.5	350.0	1
E	17	6,5	350,0	1

D

1:40

4,5x14,0

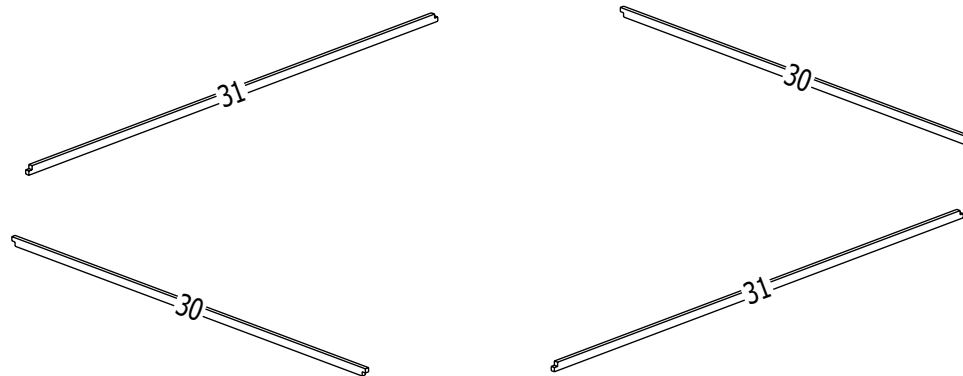




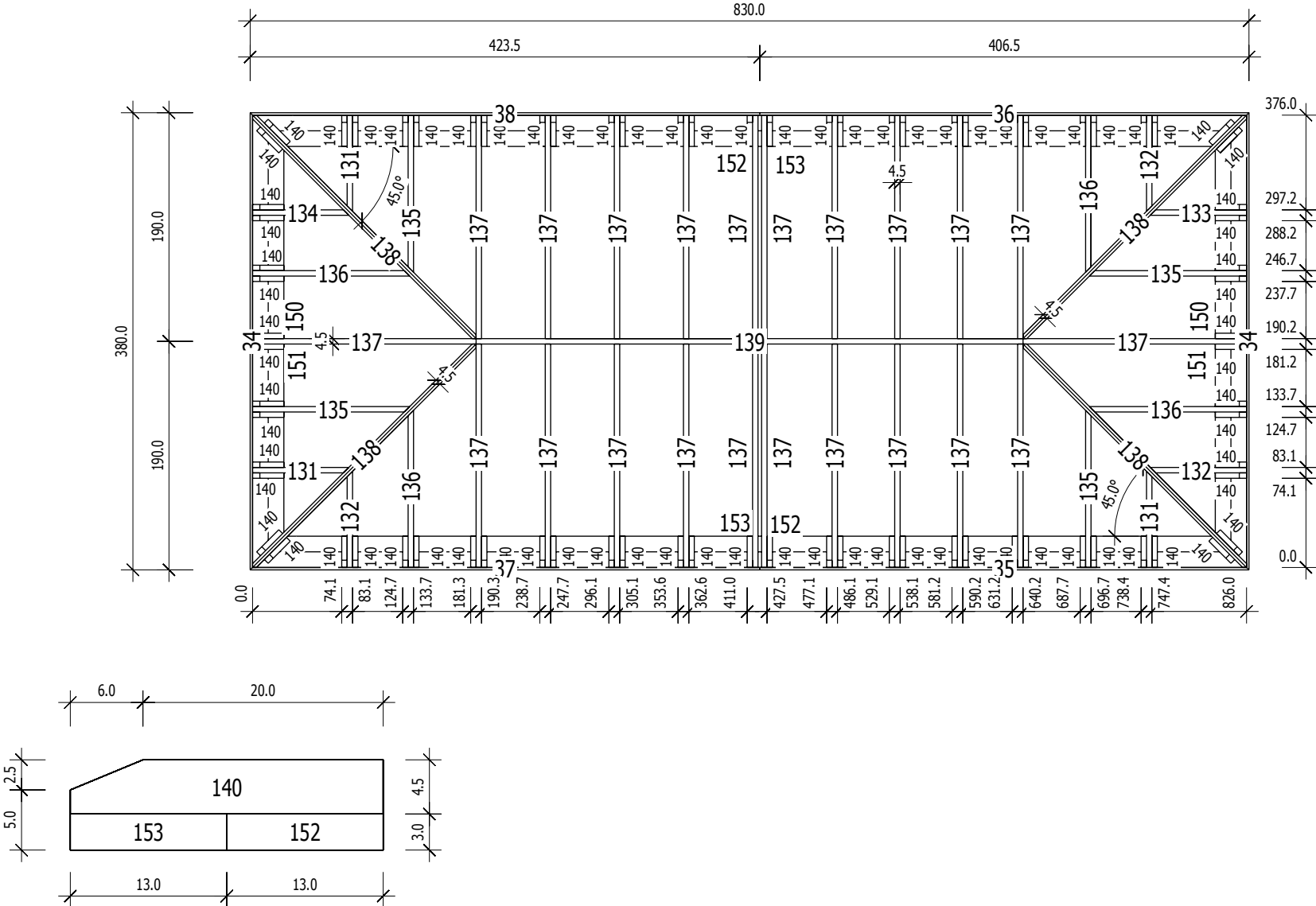
Grundrahmenplan

3,0

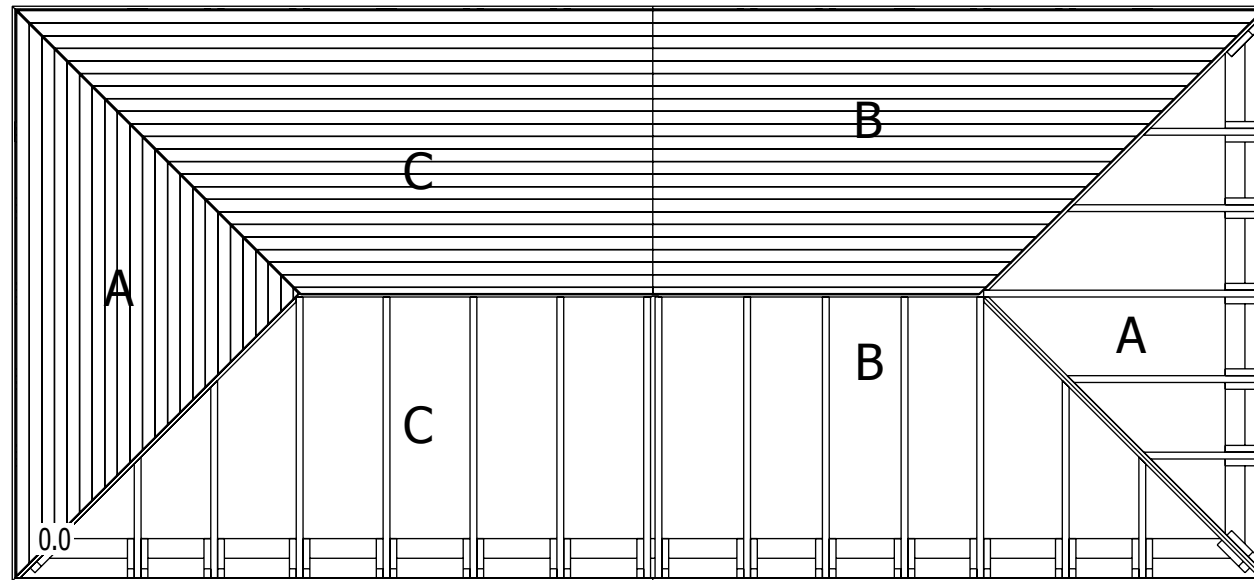
Nr.	B	H	L	Psc
	[cm]	[cm]	[cm]	
30	3,0	6,0	330,0	2
31	3,0	6,0	383,0	2



Sparrenplan

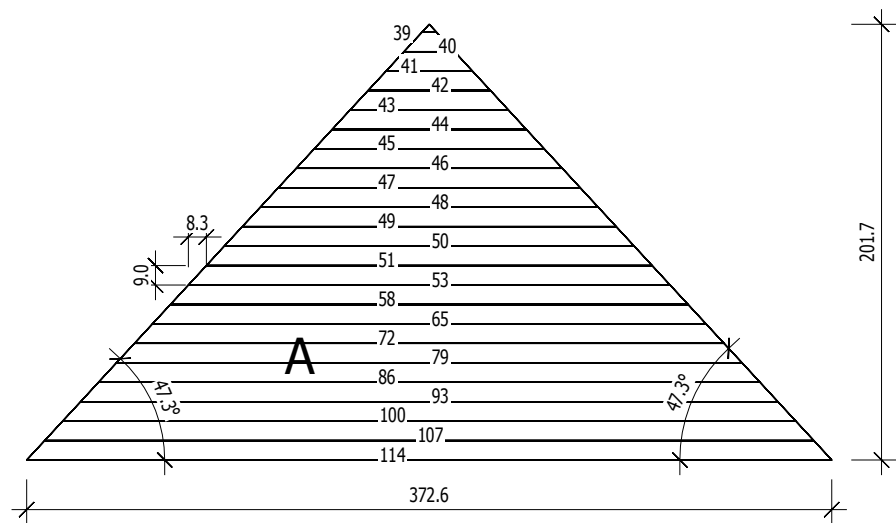


Dachplan

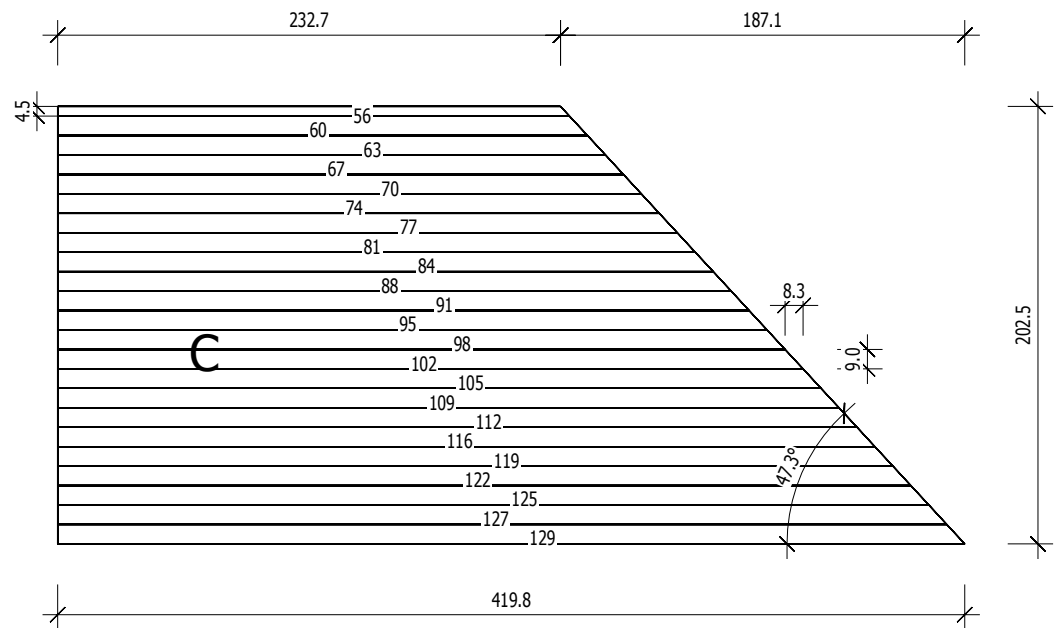
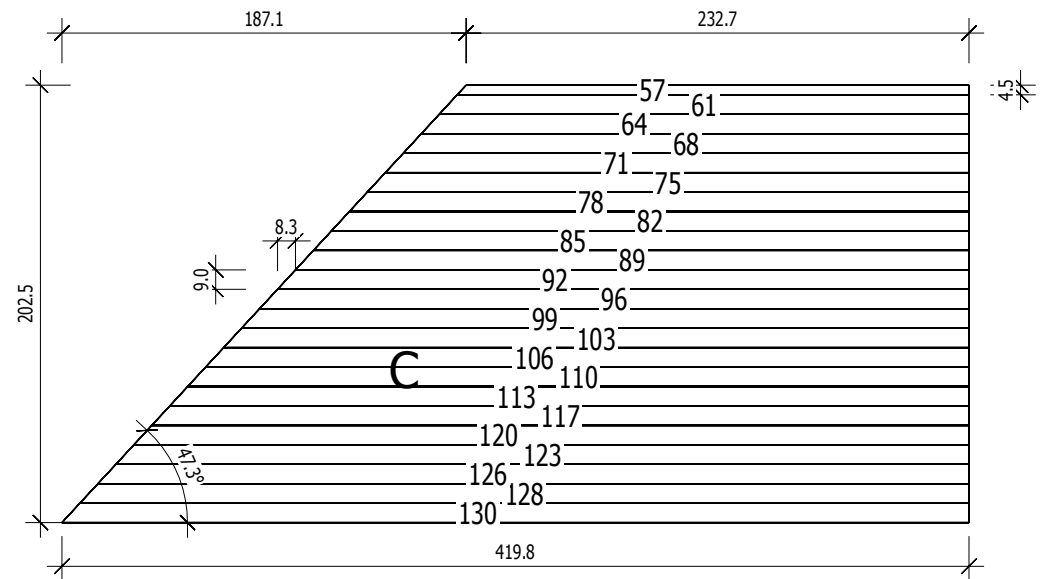


Nr.	B	H	L	Psc
	[cm]	[cm]	[cm]	

39	3,7	2,0	6,8	2
40	9,0	2,0	23,4	2
41	9,0	2,0	40,0	2
42	9,0	2,0	56,7	2
43	9,0	2,0	73,3	2
44	9,0	2,0	89,9	2
45	9,0	2,0	106,5	2
46	9,0	2,0	123,2	2
47	9,0	2,0	139,8	2
48	9,0	2,0	156,4	2
49	9,0	2,0	173,1	2
50	9,0	2,0	189,7	2
51	9,0	2,0	206,3	2
53	9,0	2,0	223,0	2
58	9,0	2,0	239,6	2
65	9,0	2,0	256,2	2
72	9,0	2,0	272,8	2
79	9,0	2,0	289,5	2
86	9,0	2,0	306,1	2
93	9,0	2,0	322,7	2
100	9,0	2,0	339,4	2
107	9,0	2,0	356,0	2
114	9,0	2,0	372,6	2



Nr.	B	H	L	Psc	Nr.	B	H	L	Psc
[cm]	[cm]	[cm]			[cm]	[cm]	[cm]		
56	4,5	2,0	236,9	1	117	9,0	2,0	378,2	1
57	4,5	2,0	236,9	1	119	9,0	2,0	386,6	1
60	9,0	2,0	245,2	1	120	9,0	2,0	386,6	1
61	9,0	2,0	245,2	1	122	9,0	2,0	394,9	1
63	9,0	2,0	253,5	1	123	9,0	2,0	394,9	1
64	9,0	2,0	253,5	1	125	9,0	2,0	403,2	1
67	9,0	2,0	261,8	1	126	9,0	2,0	403,2	1
68	9,0	2,0	261,8	1	127	9,0	2,0	411,5	1
70	9,0	2,0	270,1	1	128	9,0	2,0	411,5	1
71	9,0	2,0	270,1	1	129	9,0	2,0	419,8	1
74	9,0	2,0	278,5	1	130	9,0	2,0	419,8	1
75	9,0	2,0	278,5	1					
77	9,0	2,0	286,8	1					
78	9,0	2,0	286,8	1					
81	9,0	2,0	295,1	1					
82	9,0	2,0	295,1	1					
84	9,0	2,0	303,4	1					
85	9,0	2,0	303,4	1					
88	9,0	2,0	311,7	1					
89	9,0	2,0	311,7	1					
91	9,0	2,0	320,0	1					
92	9,0	2,0	320,0	1					
95	9,0	2,0	328,3	1					
96	9,0	2,0	328,3	1					
98	9,0	2,0	336,7	1					
99	9,0	2,0	336,7	1					
102	9,0	2,0	345,0	1					
103	9,0	2,0	345,0	1					
105	9,0	2,0	353,3	1					
106	9,0	2,0	353,3	1					
109	9,0	2,0	361,6	1					
110	9,0	2,0	361,6	1					
112	9,0	2,0	369,9	1					
113	9,0	2,0	369,9	1					
116	9,0	2,0	378,2	1					

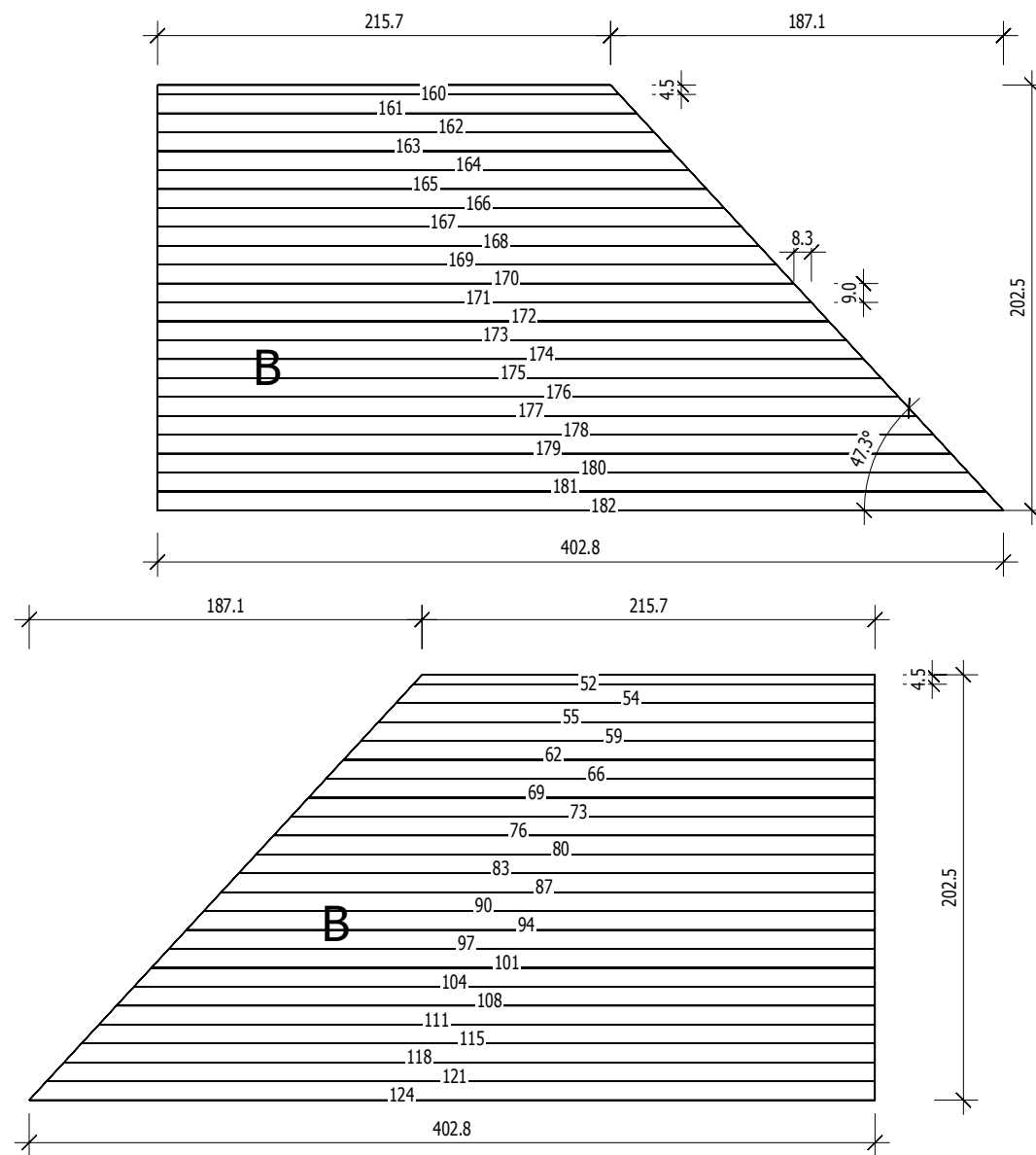


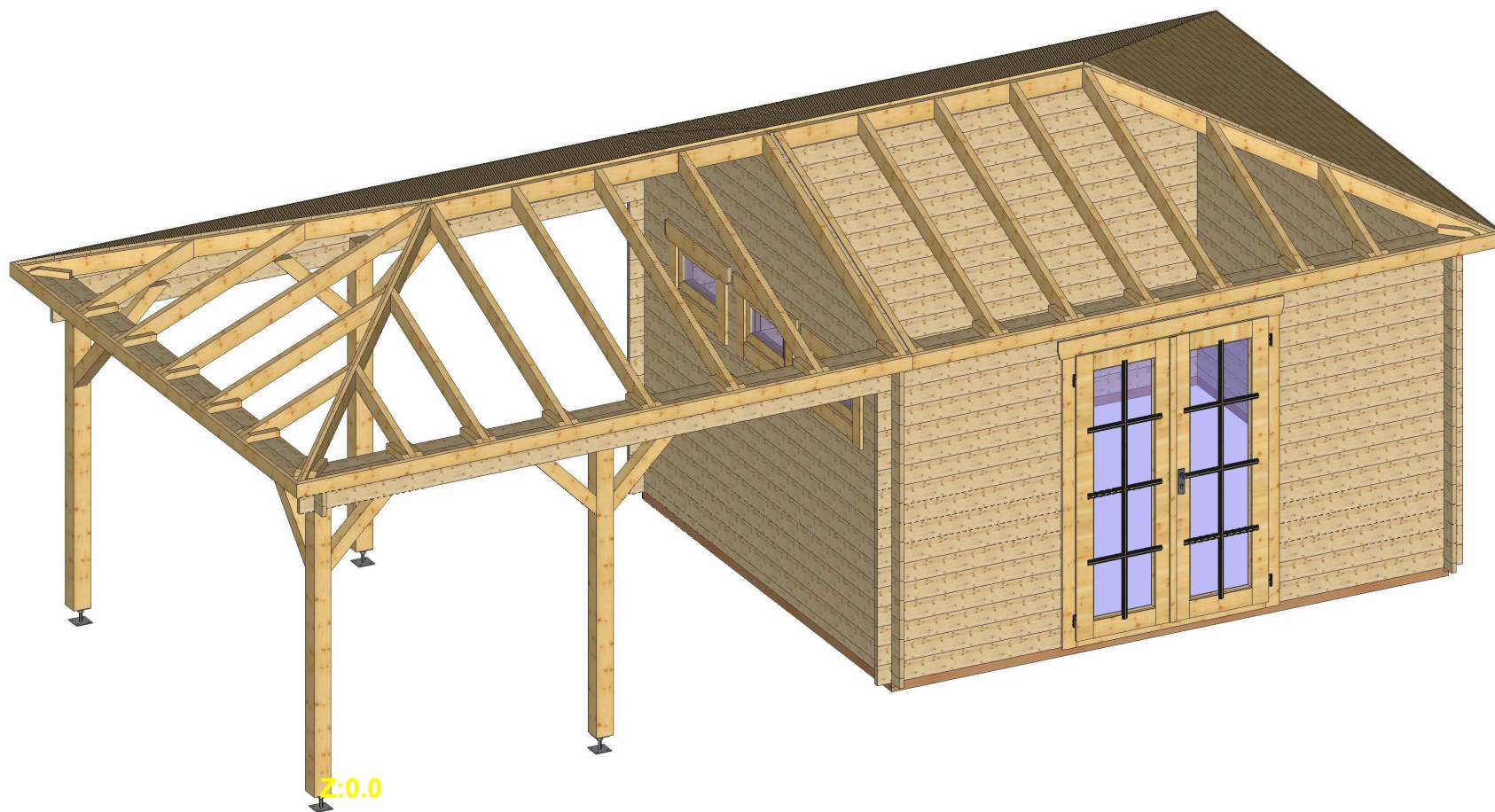
Nr. B H L Psc
[cm] [cm] [cm]

52 4,5 2,0 219,9 1
54 9,0 2,0 228,2 1
55 9,0 2,0 236,5 1
59 9,0 2,0 244,8 1
62 9,0 2,0 253,1 1
66 9,0 2,0 261,5 1
69 9,0 2,0 269,8 1
73 9,0 2,0 278,1 1
76 9,0 2,0 286,4 1
80 9,0 2,0 294,7 1
83 9,0 2,0 303,0 1
87 9,0 2,0 311,3 1
90 9,0 2,0 319,7 1
94 9,0 2,0 328,0 1
97 9,0 2,0 336,3 1
101 9,0 2,0 344,6 1
104 9,0 2,0 352,9 1
108 9,0 2,0 361,2 1
111 9,0 2,0 369,6 1
115 9,0 2,0 377,9 1
118 9,0 2,0 386,2 1
121 9,0 2,0 394,5 1
124 9,0 2,0 402,8 1
160 4,5 2,0 219,9 1
161 9,0 2,0 228,2 1
162 9,0 2,0 236,5 1
163 9,0 2,0 244,8 1
164 9,0 2,0 253,1 1
165 9,0 2,0 261,5 1
166 9,0 2,0 269,8 1
167 9,0 2,0 278,1 1
168 9,0 2,0 286,4 1

Nr. B H L Psc
[cm] [cm] [cm]

169 9,0 2,0 294,7 1
170 9,0 2,0 303,0 1
171 9,0 2,0 311,3 1
172 9,0 2,0 319,7 1
173 9,0 2,0 328,0 1
174 9,0 2,0 336,3 1
175 9,0 2,0 344,6 1
176 9,0 2,0 352,9 1
177 9,0 2,0 361,2 1
178 9,0 2,0 369,6 1
179 9,0 2,0 377,9 1
180 9,0 2,0 386,2 1
181 9,0 2,0 394,5 1
182 9,0 2,0 402,8 1





Bemerkung: die Ansicht von Turen, Fenster und anderen Teilen kann abweichen von diesem Bild