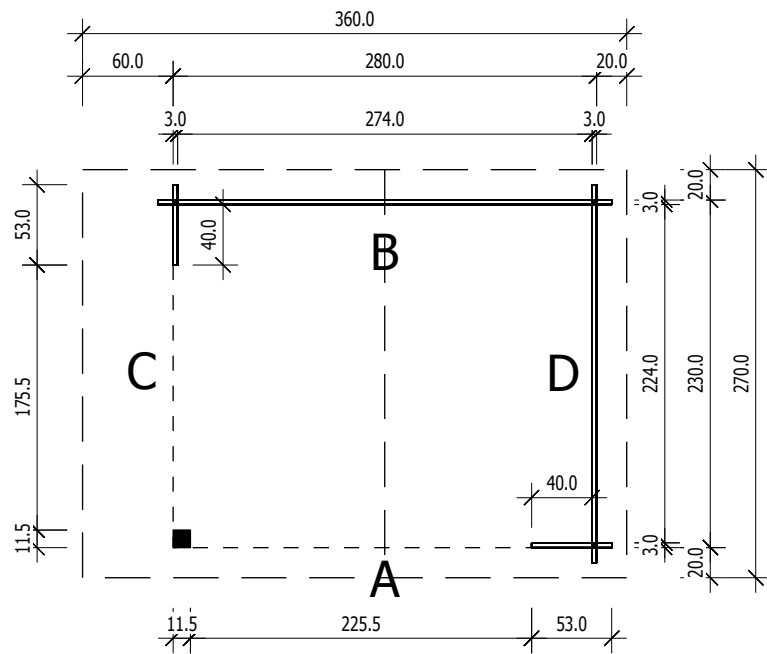
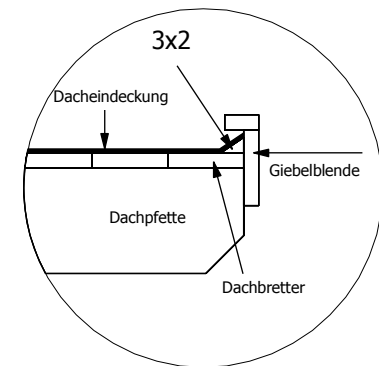
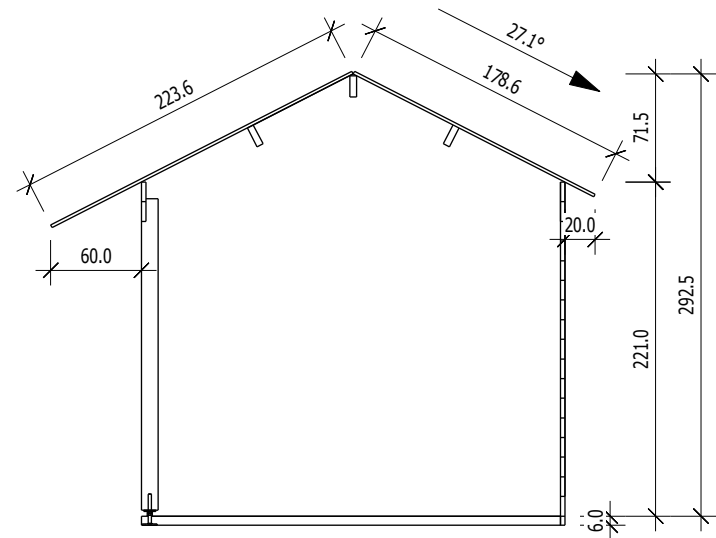




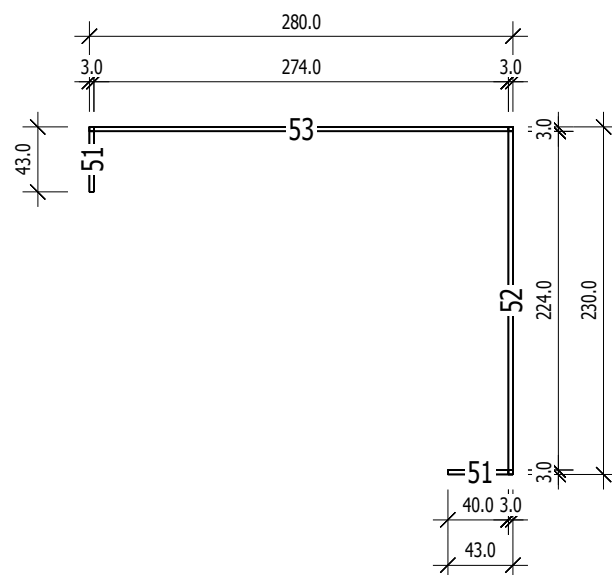
Grundriss



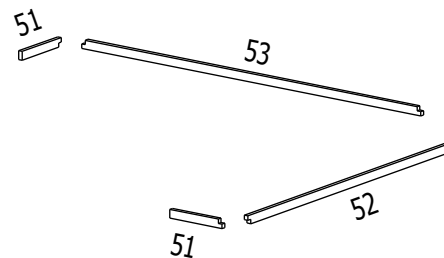
Schnitt



Grundrahmenplan



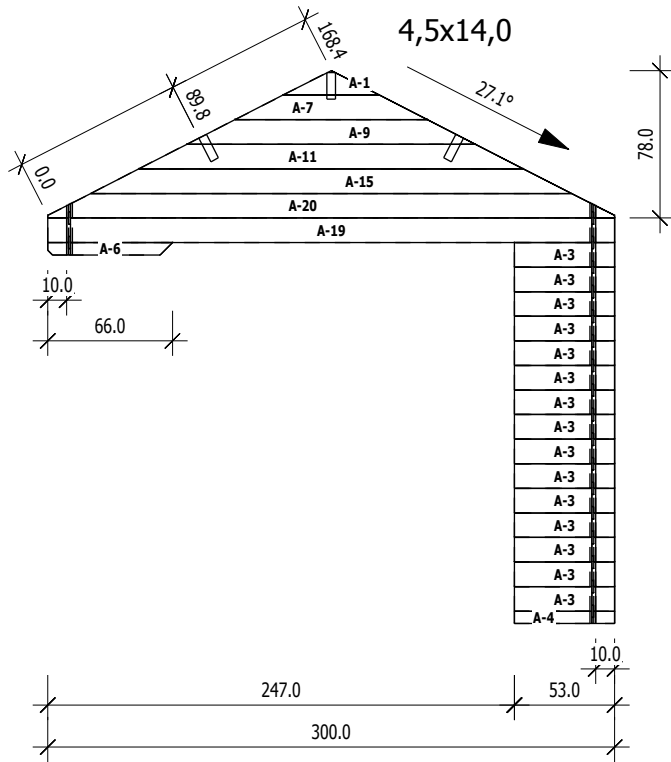
Nr.	B	H	L	Psc
	[cm]	[cm]	[cm]	
51	3,0	6,0	43,0	2
52	3,0	6,0	230,0	1
53	3,0	6,0	280,0	1



A

M 1:40

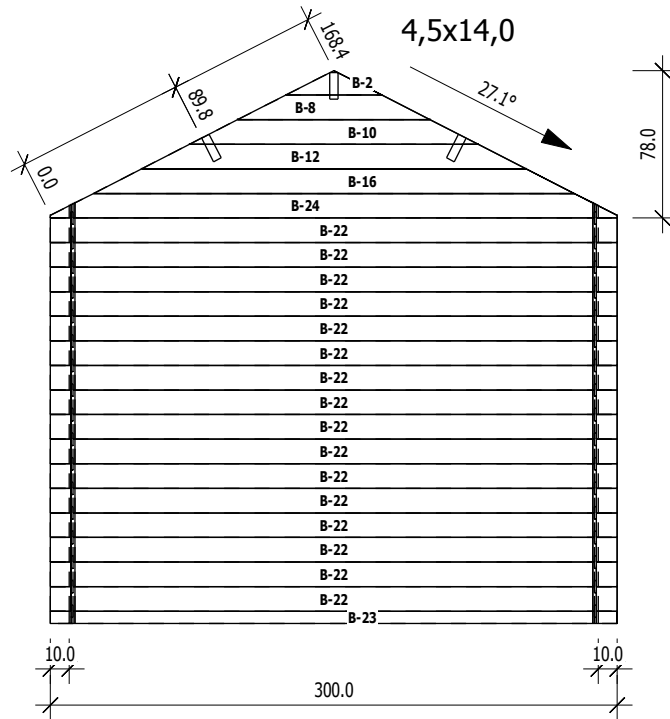
	Nr	H	L	Psc
A	1	13.0	50.9	1
A	3	13.0	53.0	15
A	4	6.5	53.0	1
A	6	6.5	66.0	1
A	7	13.0	101.8	1
A	9	13.0	152.7	1
A	11	13.0	203.6	1
A	15	13.0	254.5	1
A	19	13.0	300.0	1
A	20	13,0	300,0	1



B

M 1:40

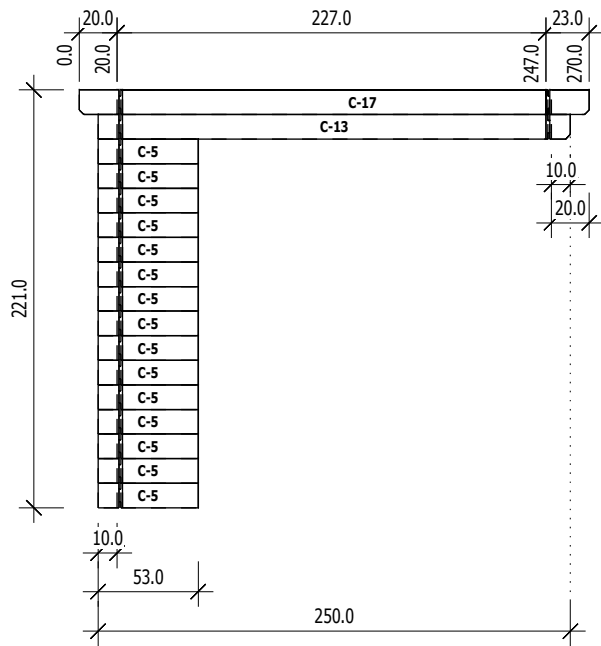
	Nr	H	L	Psc
B	2	13.0	50.9	1
B	8	13.0	101.8	1
B	10	13.0	152.7	1
B	12	13.0	203.6	1
B	16	13.0	254.5	1
B	22	13.0	300.0	16
B	23	6.5	300.0	1
B	24	13,0	300,0	1



C

M 1:40

	Nr	H	L	Psc
C	5	13.0	53.0	15
C	13	13.0	250.0	1
C	17	13,0	270,0	1



D

M 1:40

	Nr	H	L	Psc
D	14	13.0	250.0	16
D	18	13,0	270,0	1

