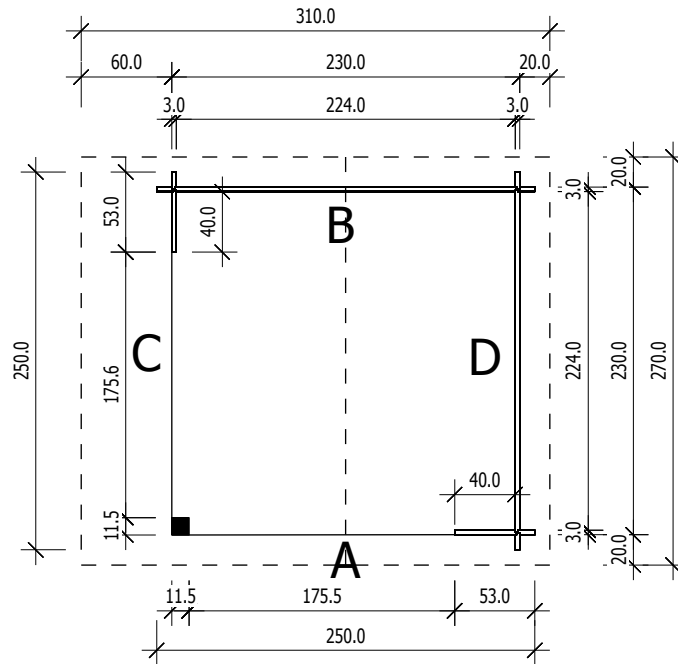




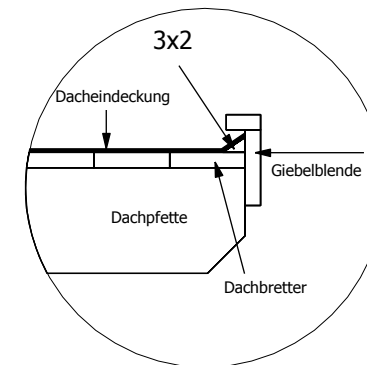
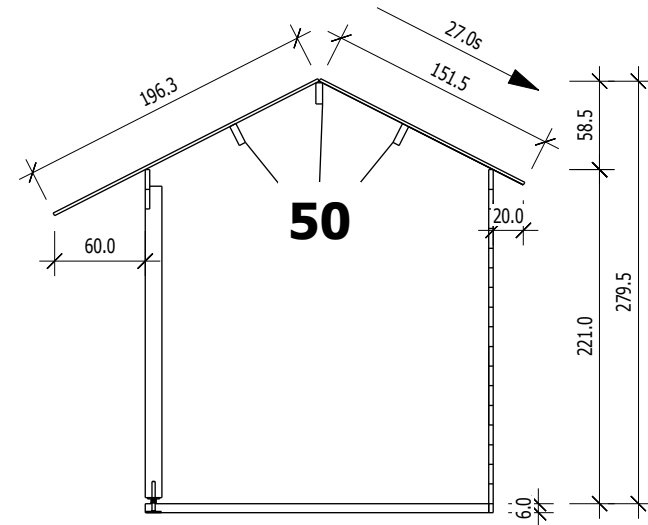
Bemerkung: die Ansicht von Türen, Fenster und anderen Teilen kann abweichen von diesem Bild

3,0

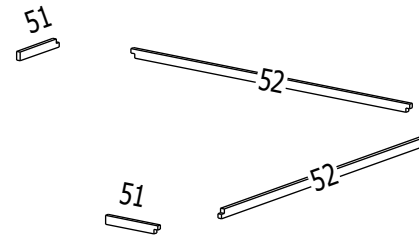
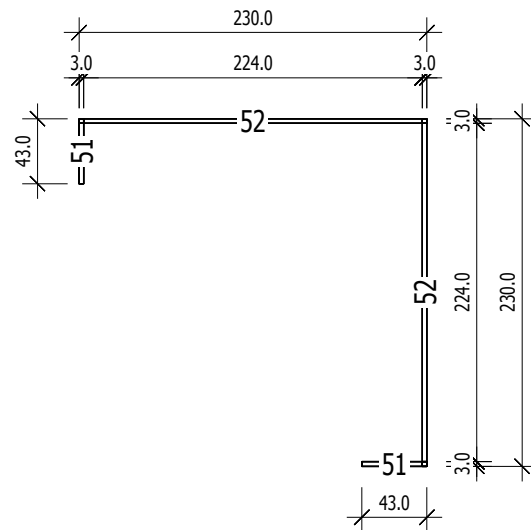
Grundriss



Schnitt



Grundrahmenplan

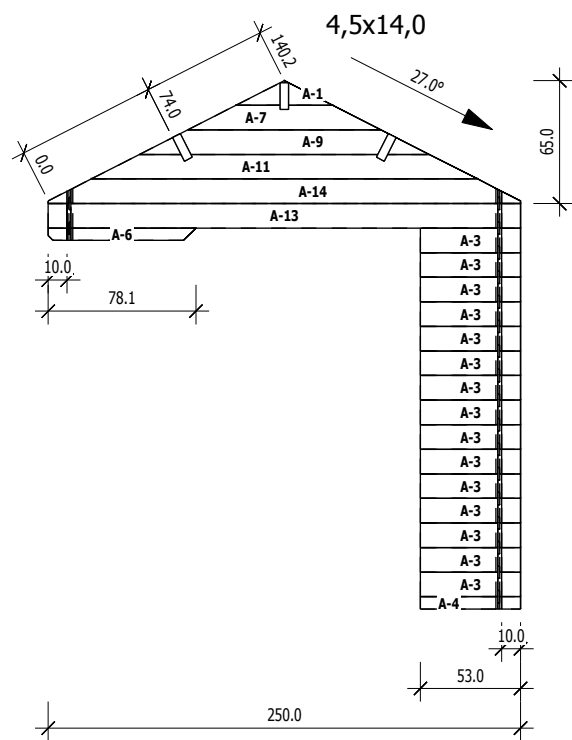


Nr.	B	H	L	Psc
	[cm]	[cm]	[cm]	
=====				
51	3,0	6,0	43,0	2
52	3,0	6,0	230,0	2

A

M 1:40

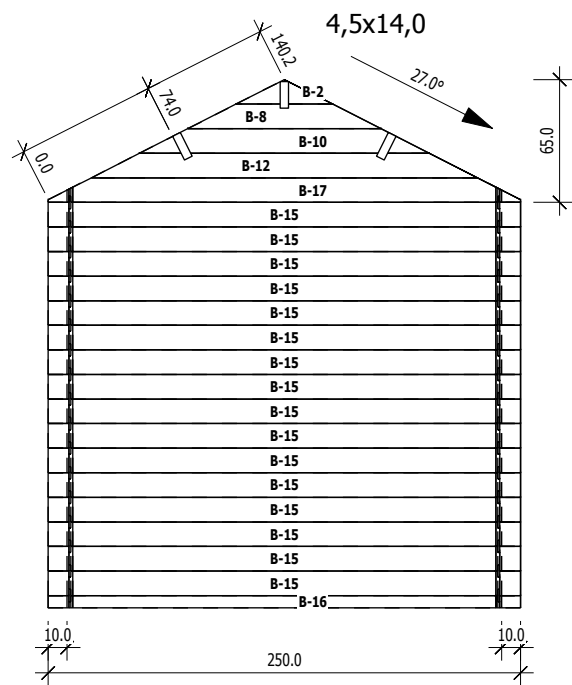
	Nr	H	L	Psc
A	1	13.0	51.1	1
A	3	13.0	53.0	15
A	4	6.5	53.0	1
A	6	6.5	78.1	1
A	7	13.0	102.2	1
A	9	13.0	153.3	1
A	11	13.0	204.4	1
A	13	13.0	250.0	1
A	14	13,0	250,0	1



B

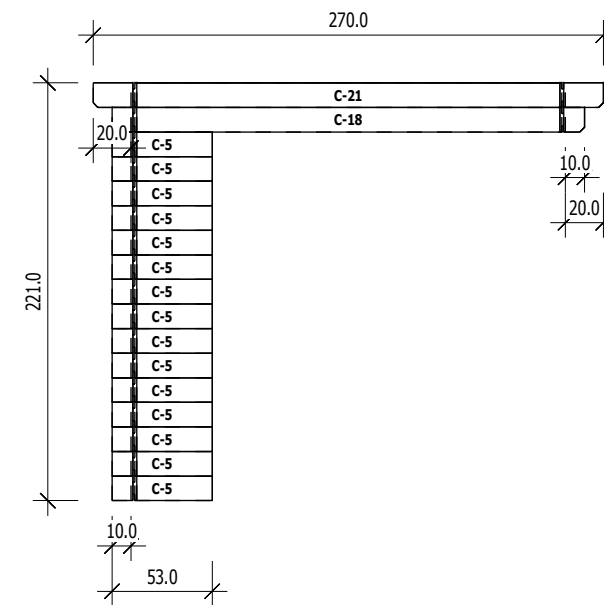
M 1:40

	Nr	H	L	Psc
B	2	13.0	51.1	1
B	8	13.0	102.2	1
B	10	13.0	153.3	1
B	12	13.0	204.4	1
B	15	13.0	250.0	16
B	16	6.5	250.0	1
B	17	13,0	250,0	1



C

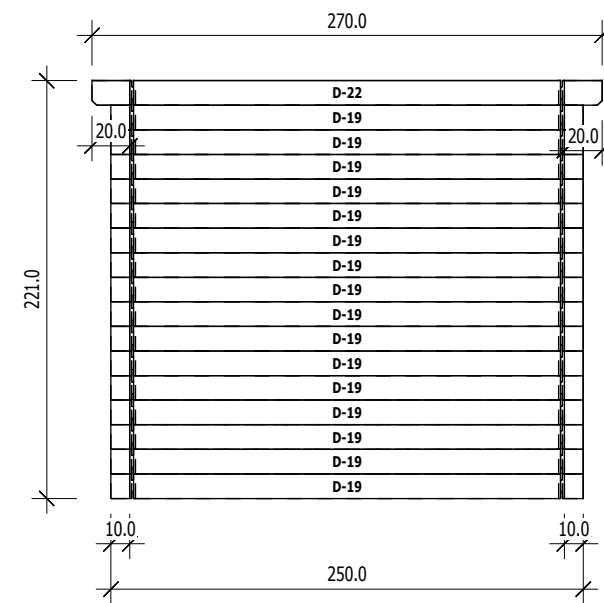
M 1:40



	Nr	H	L	Psc
C	5	13.0	53.0	15
C	18	13.0	250.0	1
C	21	13,0	270,0	1

D

M 1:40



	Nr	H	L	Psc
D	19	13.0	250.0	16
D	22	13,0	270,0	1

3,0