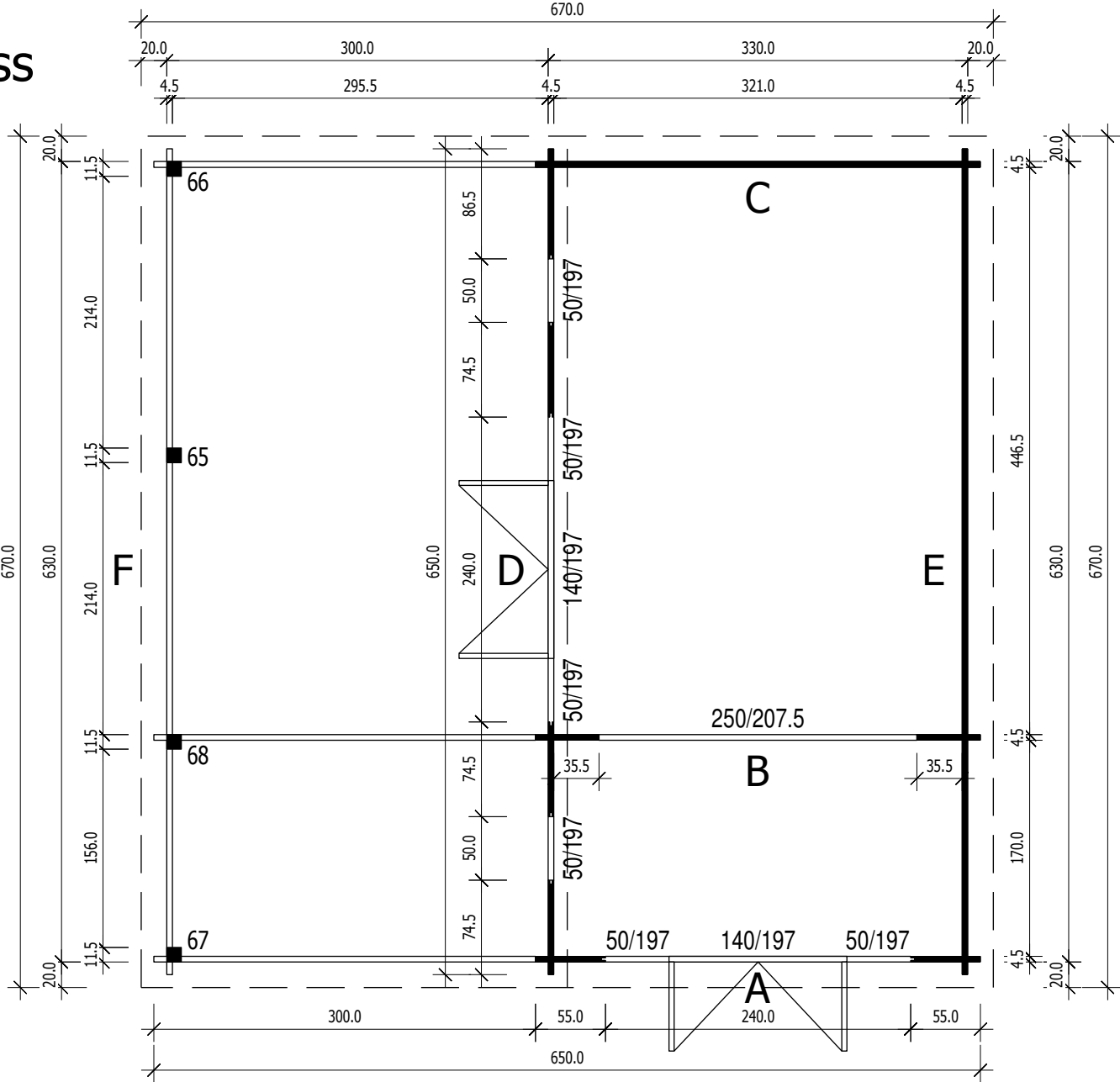


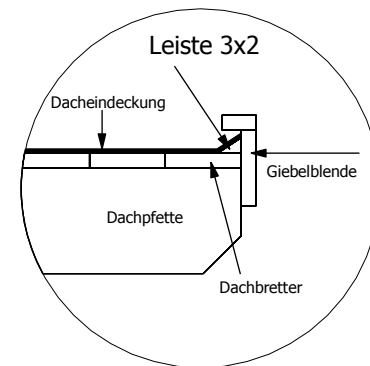
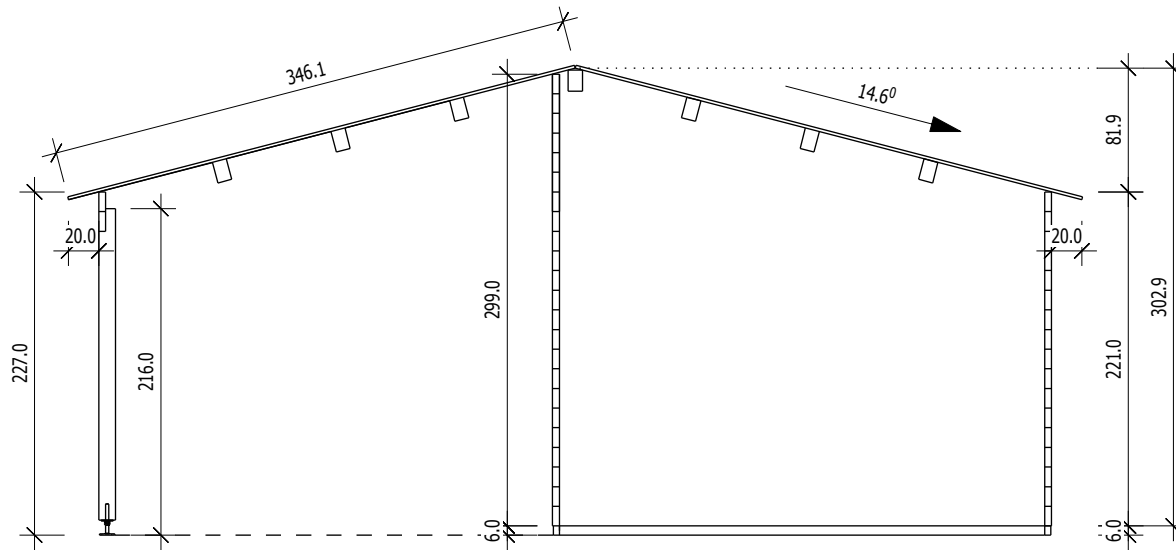
Bemerkung: die Ansicht von Turen, Fenster und anderen Teilen kann abweichen von diesem Bild

Grundriss

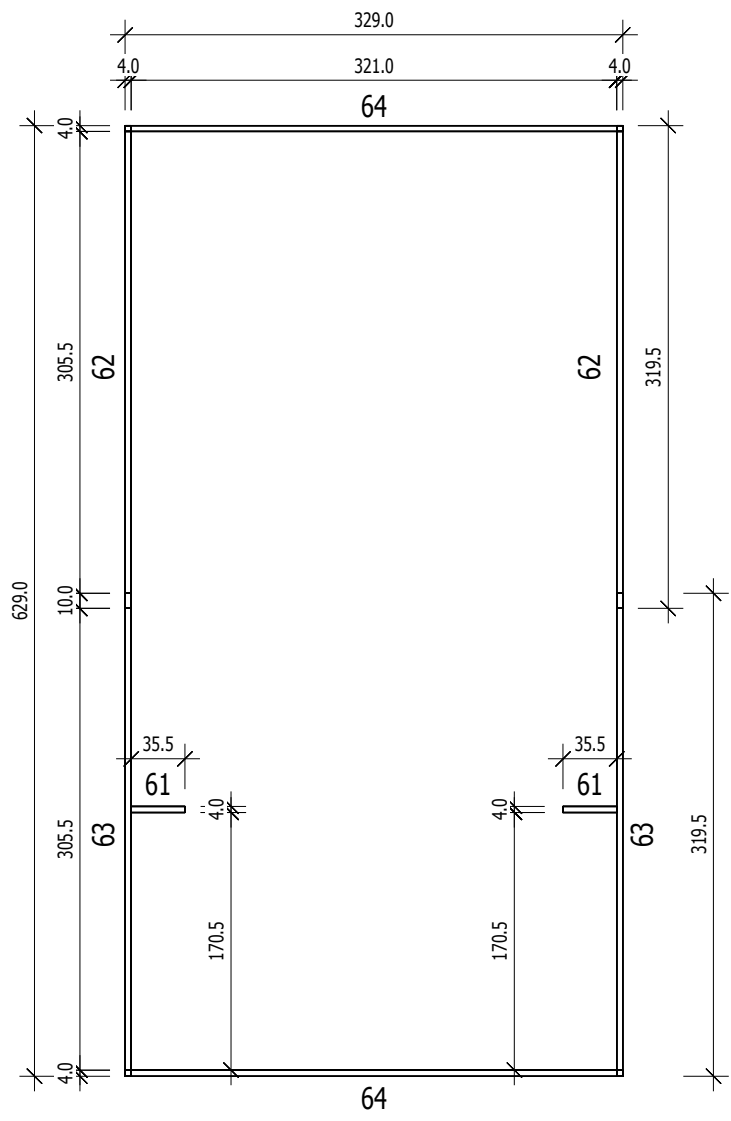
4,5



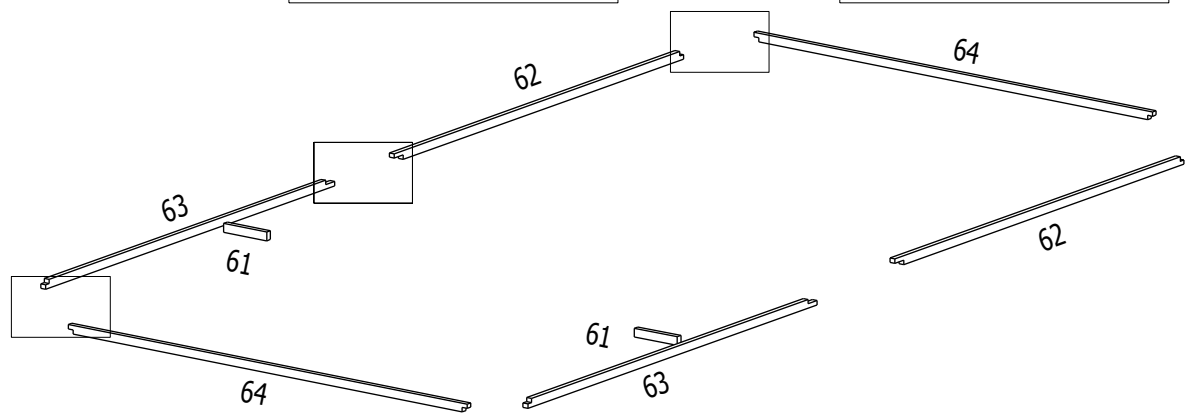
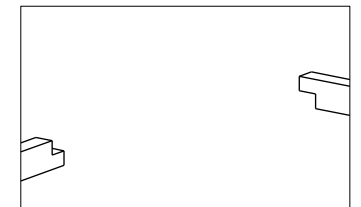
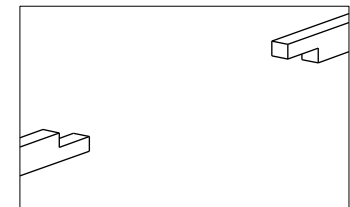
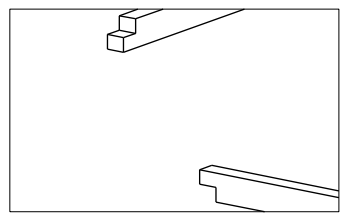
Schnitt



Grundrahmenplan



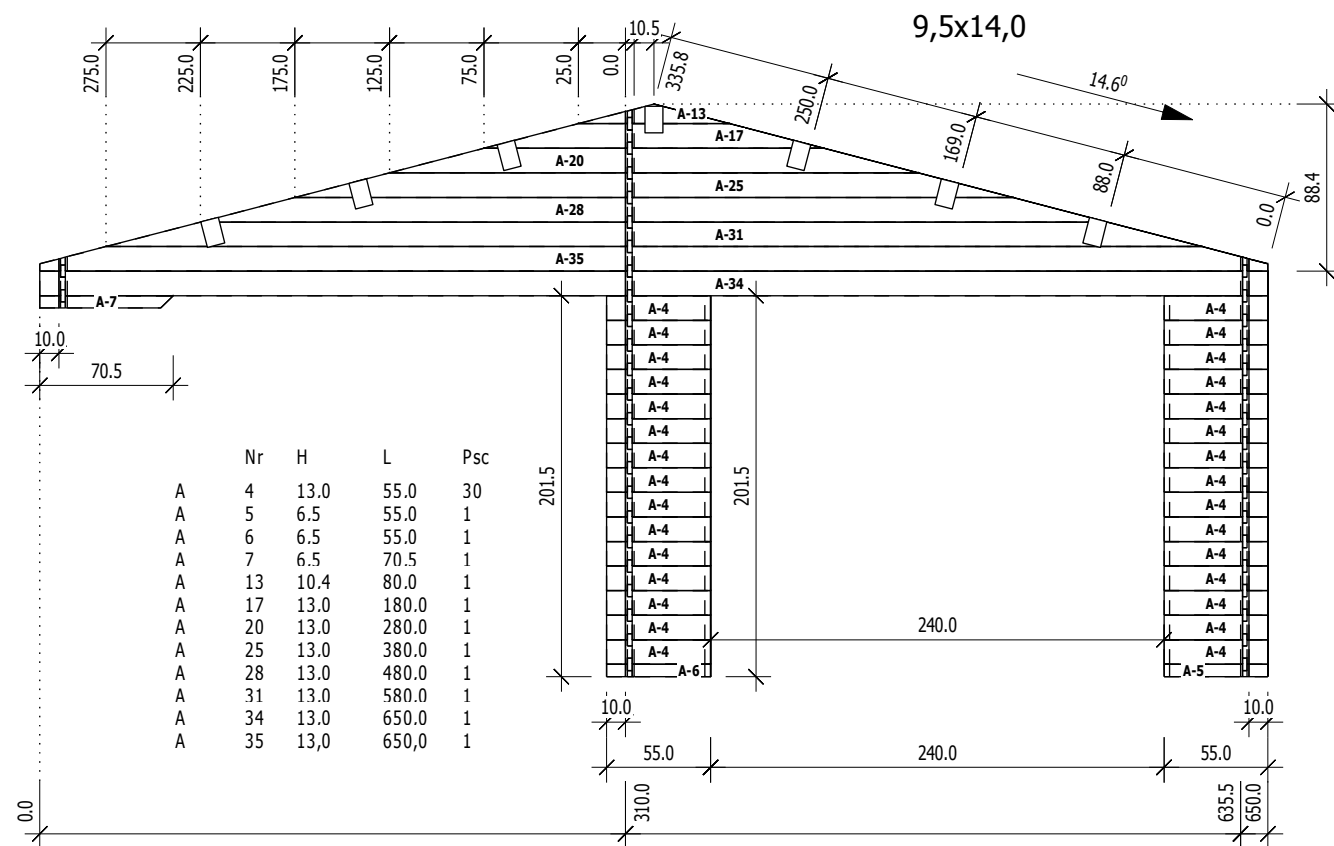
Nr.	B [cm]	H [cm]	L [cm]	Psc
61	4,0	6,0	35,5	2
62	4,0	6,0	319,5	2
63	4,0	6,0	305,5	2
64	4,0	6,0	329,0	2



A

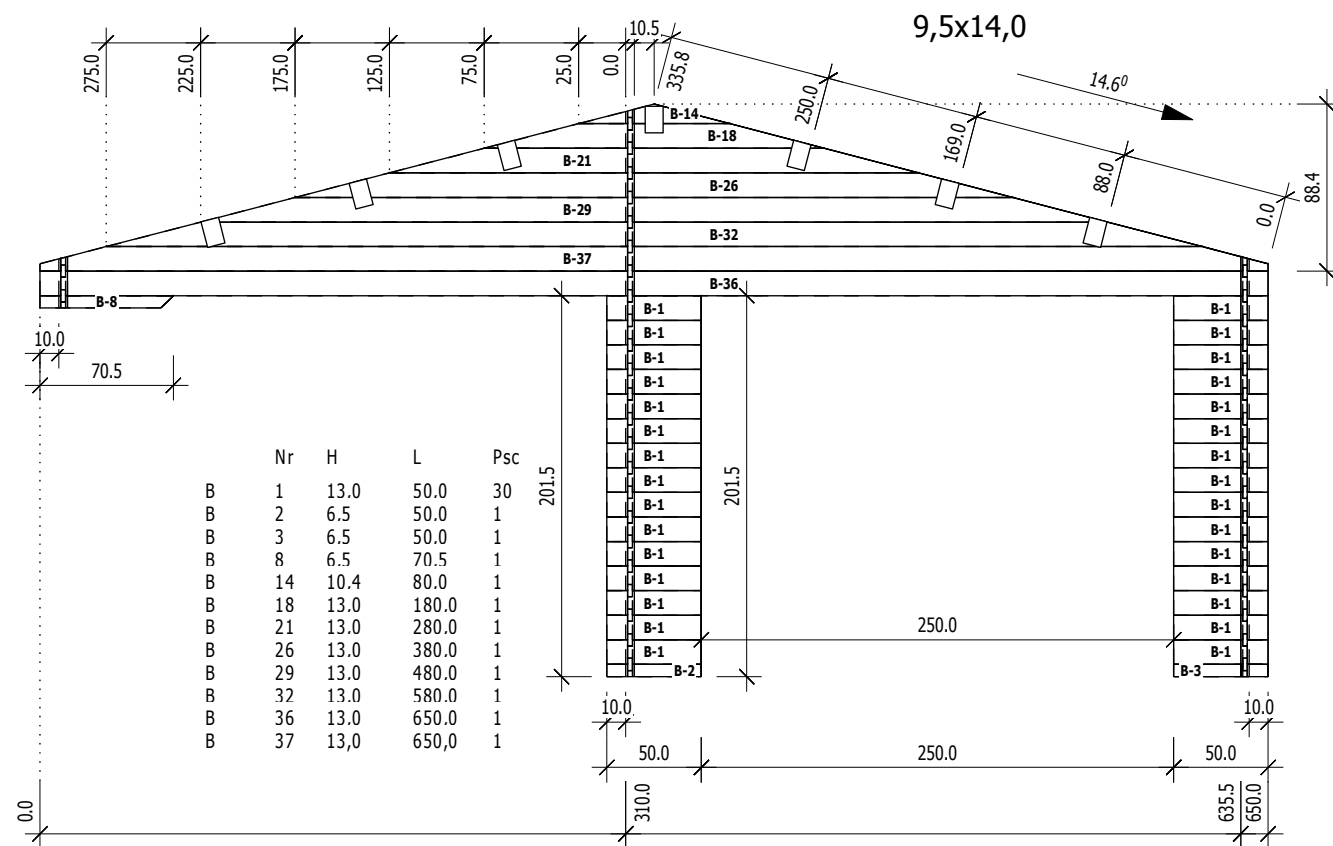
M 1:40

Ansicht von Aussen



B

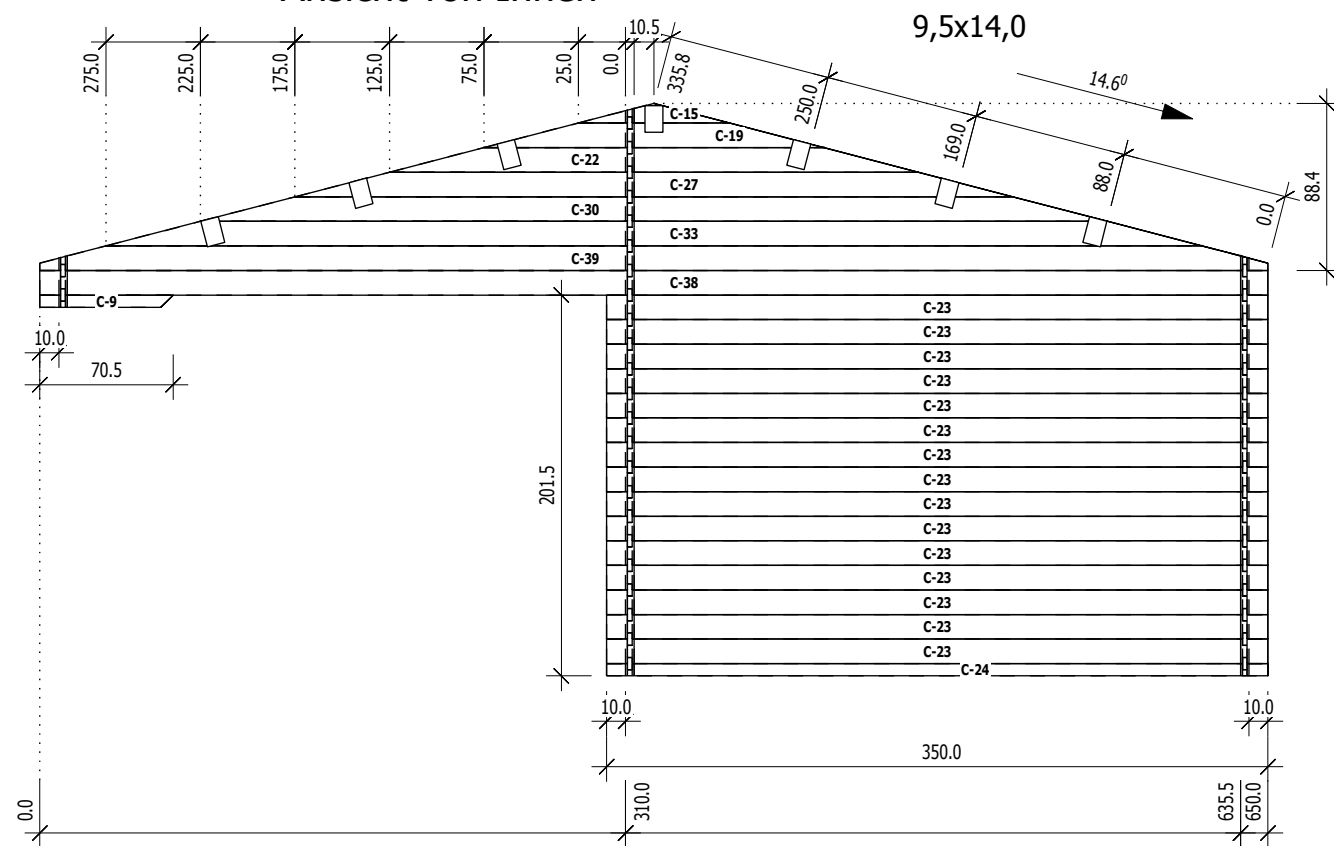
M 1:40



C

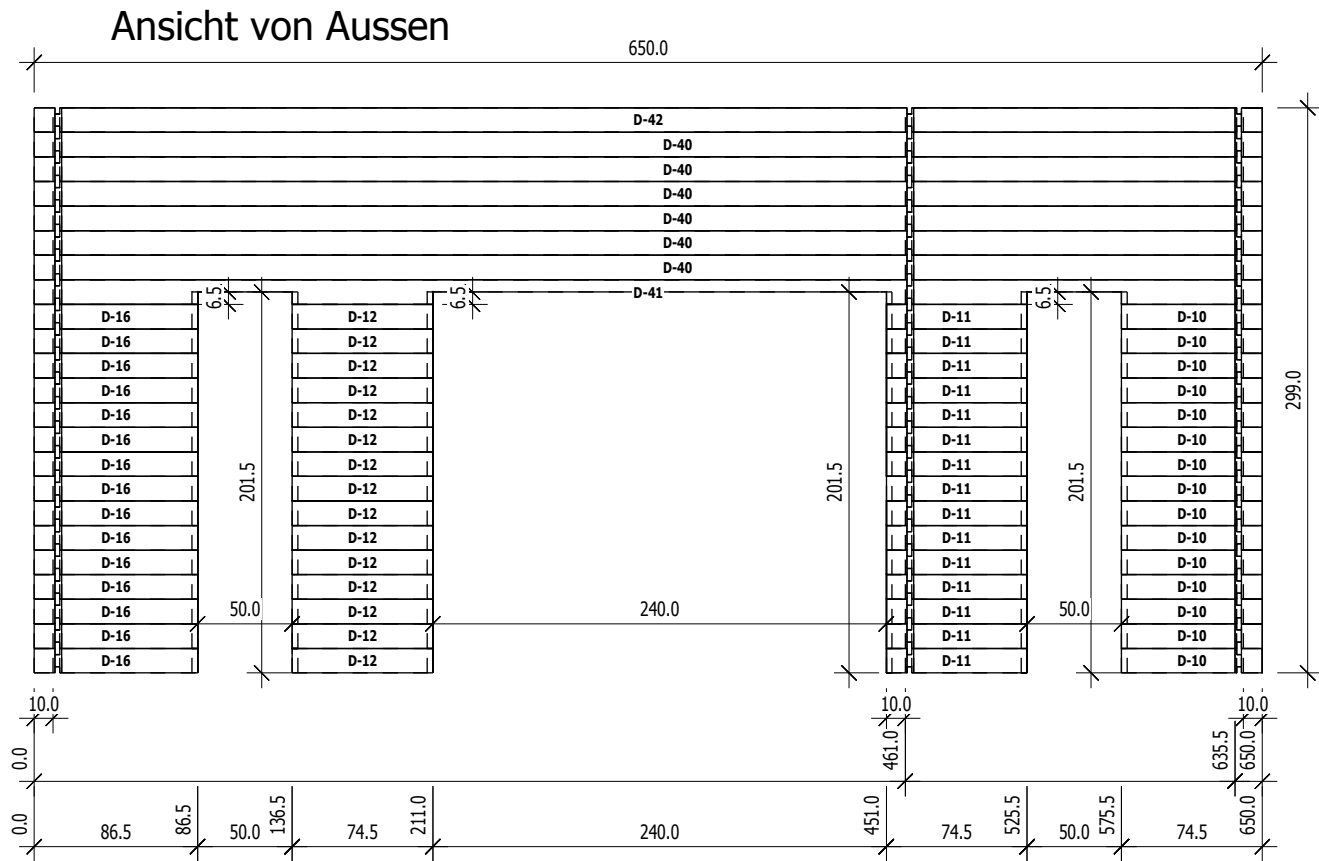
M 1:40

Ansicht von Innen



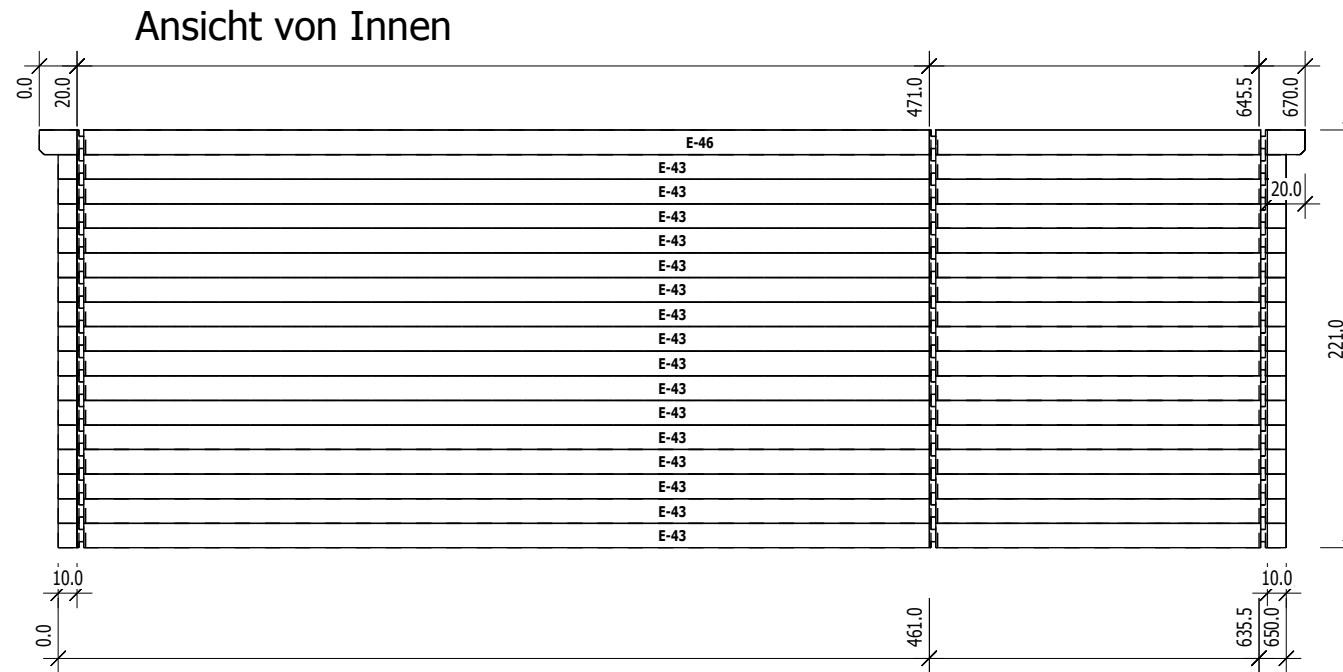
Nr	H	L	Psc
C 9	6.5	70.5	1
C 15	10.4	80.0	1
C 19	13.0	180.0	1
C 22	13.0	280.0	1
C 23	13.0	350.0	15
C 24	6.5	350.0	1
C 27	13.0	380.0	1
C 30	13.0	480.0	1
C 33	13.0	580.0	1
C 38	13.0	650.0	1
C 39	13.0	650.0	1

D
M 1:40



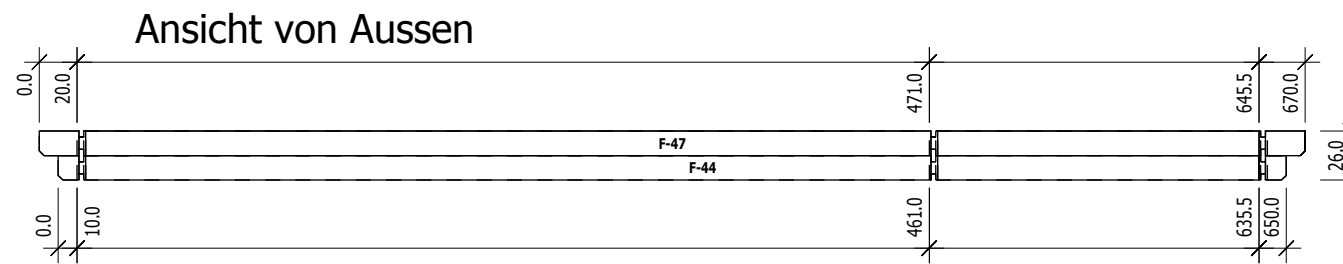
	Nr	H	L	Psc
D	10	13.0	74.5	15
D	11	13.0	74.5	15
D	12	13.0	74.5	15
D	16	13.0	86.5	15
D	40	13.0	650.0	6
D	41	13.0	650.0	1
D	42	13.0	650.0	1

E
M 1:40



	Nr	H	L	Psc
E	43	13.0	650.0	16
E	46	13.0	670.0	1

F
M 1:40



	Nr	H	L	Psc
F	44	13.0	650.0	1
F	47	13.0	670.0	1