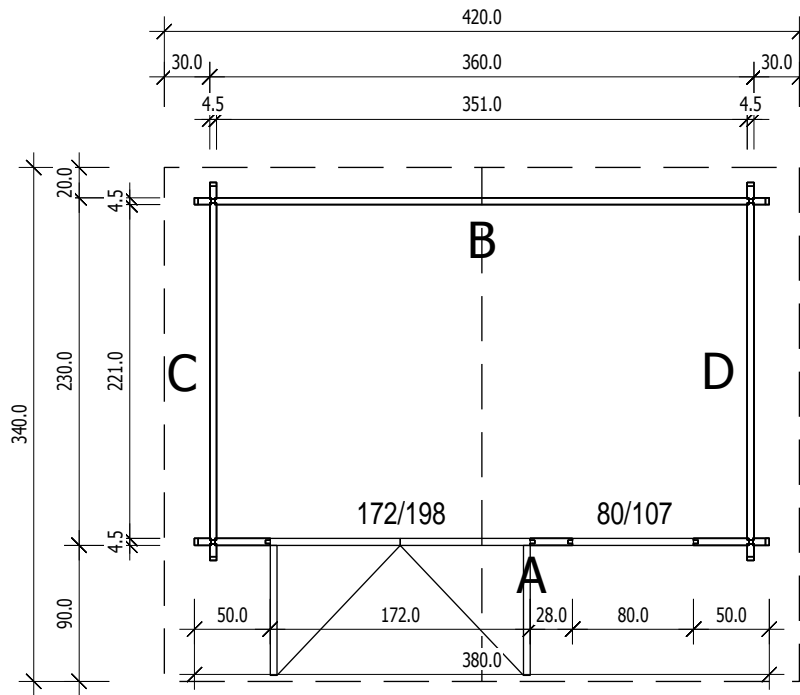
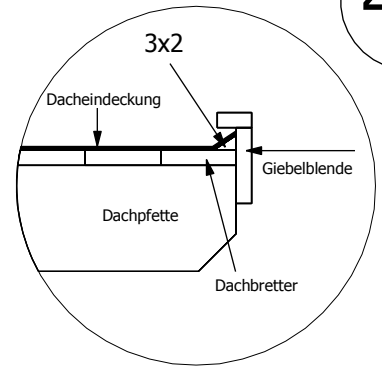


Bemerkung: die Ansicht von Turen, Fenster und anderen Teilen kann abweichen von diesem Bild

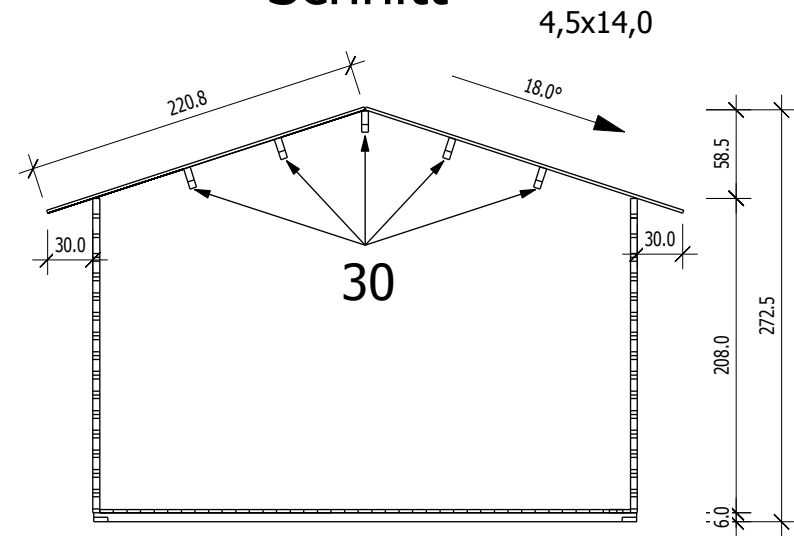
# Grundriss



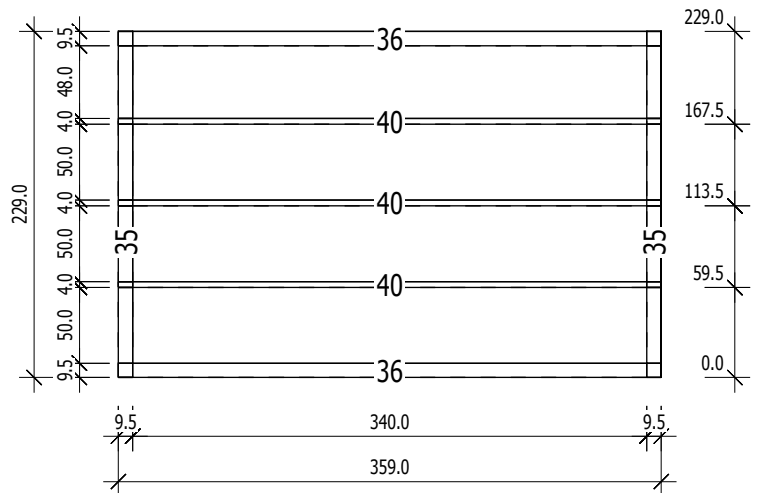
4,5



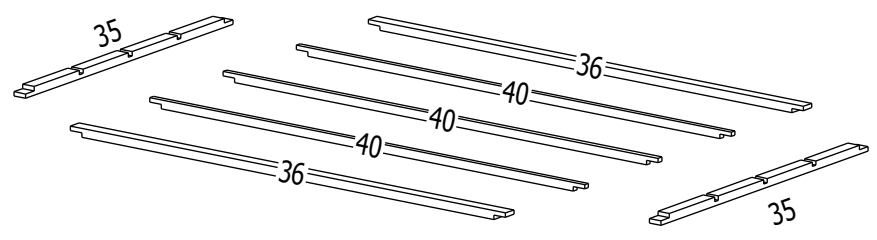
# Schnitt



# Grundrahmenplan



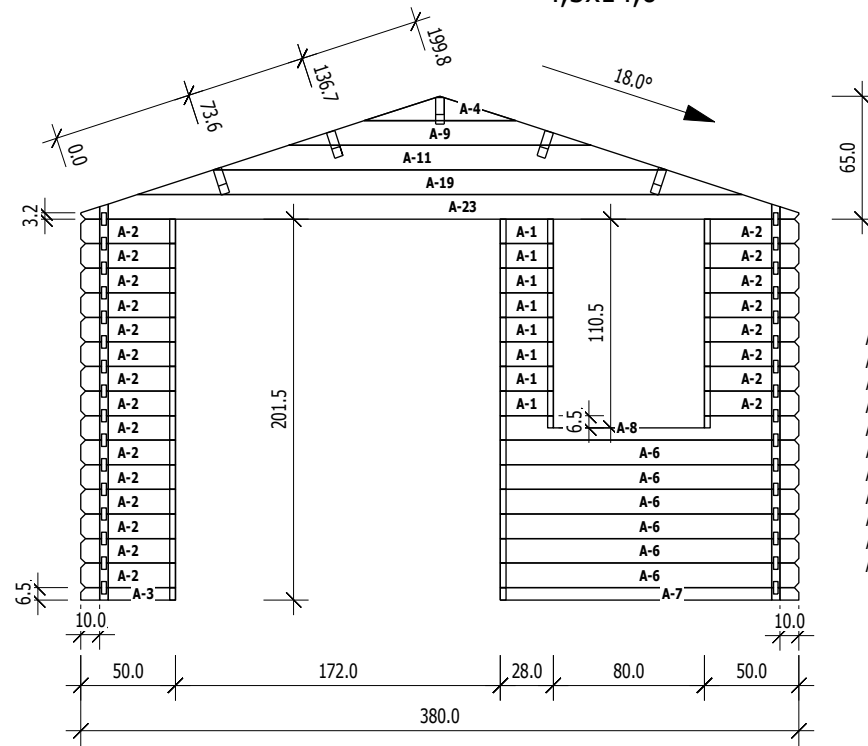
Nr.	B [cm]	H [cm]	L [cm]	Psc
35	9,5	6,0	229,0	2
36	9,5	6,0	359,0	2
40	4,0	6,0	359,0	3



**A**  
M 1:40

Ansicht von Aussen

4,5x14,0

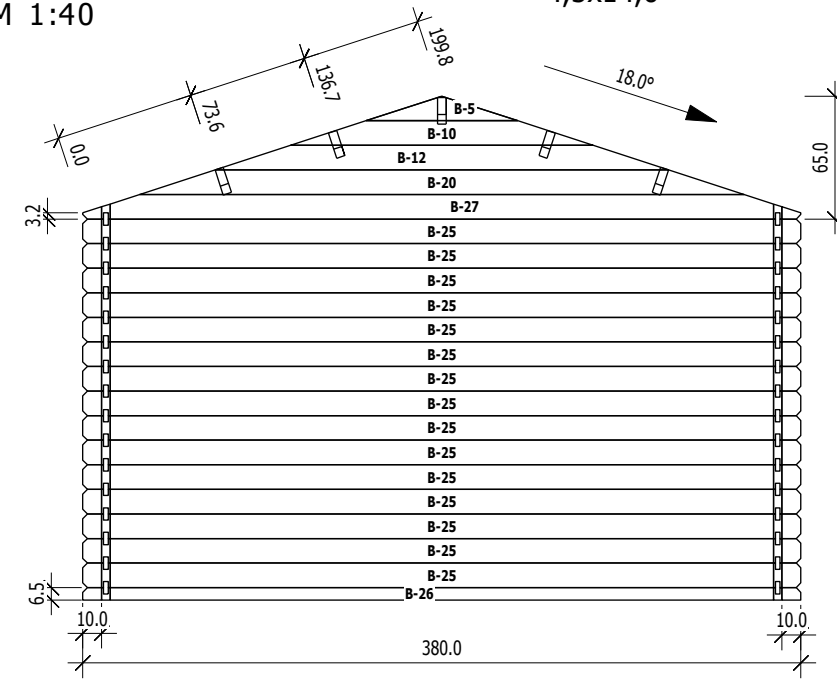


Nr	H	L	Psc
A 1	13.0	28.0	8
A 2	13.0	50.0	23
A 3	6.5	50.0	1
A 4	13.0	80.0	1
A 6	13.0	158.0	6
A 7	6.5	158.0	1
A 8	13.0	158.0	1
A 9	13.0	160.0	1
A 11	13.0	240.0	1
A 19	13.0	320.0	1
A 23	13.0	380.0	1

**B**  
M 1:40

Ansicht von Innen

4,5x14,0

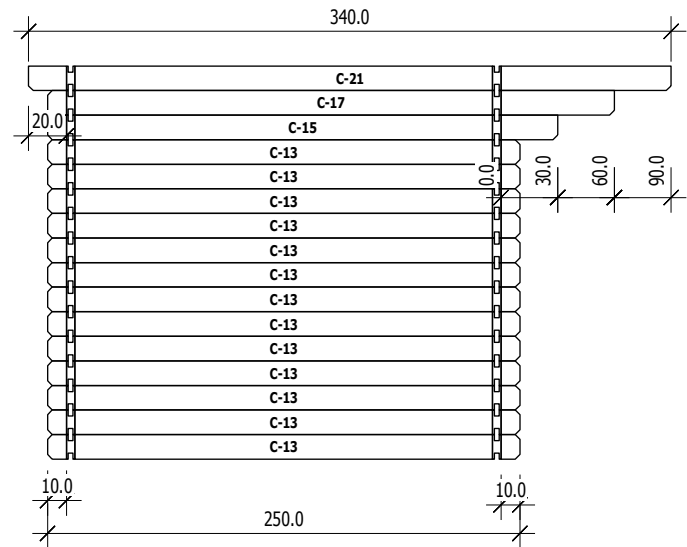


Nr	H	L	Psc
B 5	13.0	80.0	1
B 10	13.0	160.0	1
B 12	13.0	240.0	1
B 20	13.0	320.0	1
B 25	13.0	380.0	15
B 26	6.5	380.0	1
B 27	13.0	380.0	1

4,5

**C**  
M 1:40

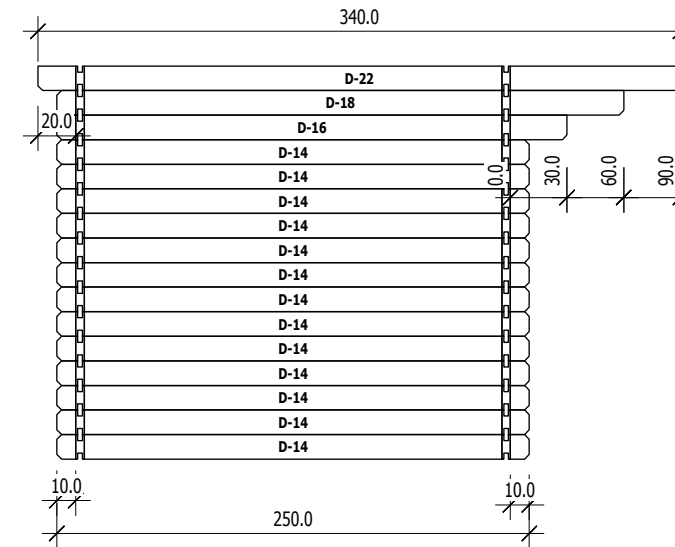
Ansicht von Aussen



Nr	H	L	Psc
C 13	13.0	250.0	13
C 15	13.0	270.0	1
C 17	13.0	300.0	1
C 21	13.0	340.0	1

**D**  
M 1:40

Ansicht von Innen



Nr	H	L	Psc
D 14	13.0	250.0	13
D 16	13.0	270.0	1
D 18	13.0	300.0	1
D 22	13.0	340.0	1