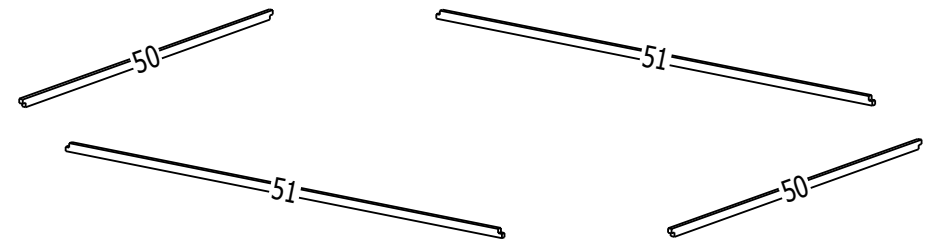
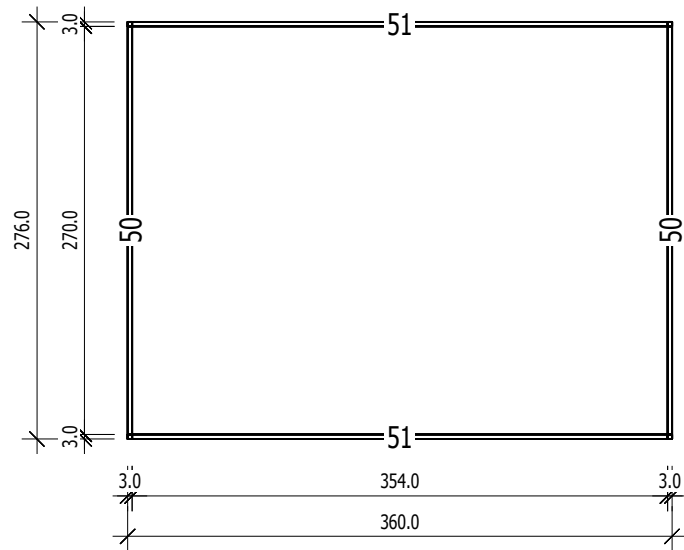




Bemerkung: die Ansicht von Turen, Fenster und anderen Teilen kann abweichen von diesem Bild



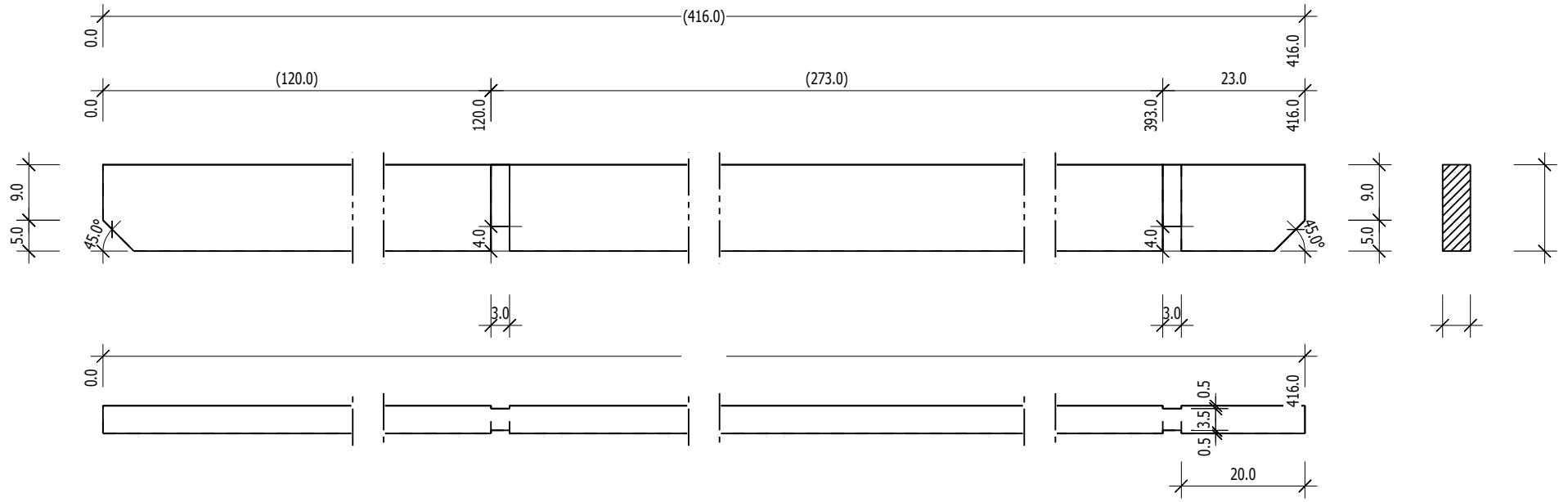
Grundrahmenplan

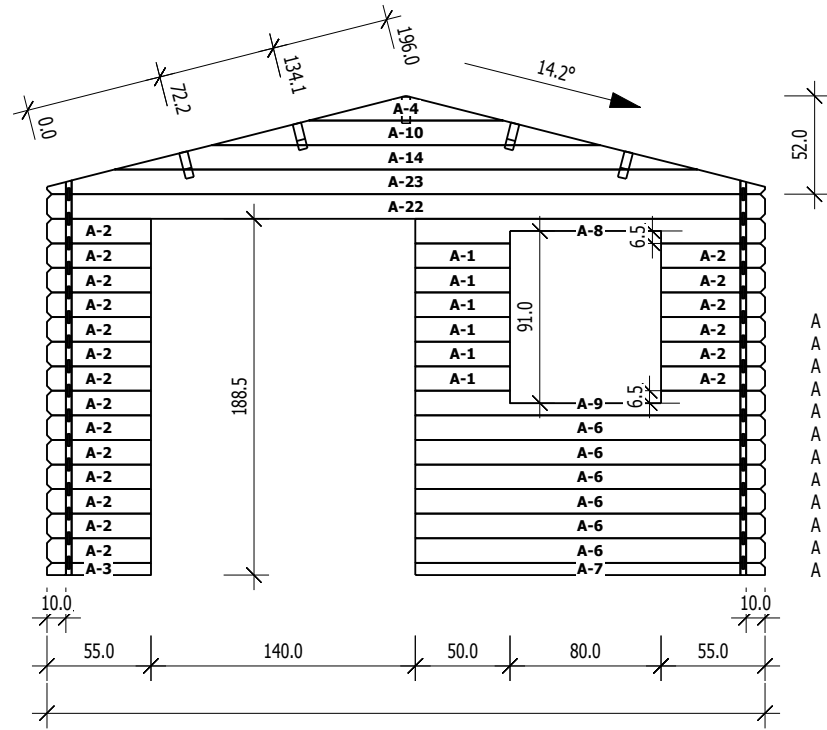


Nr. 50 4.0x6.0x360.0 - 2vnt.

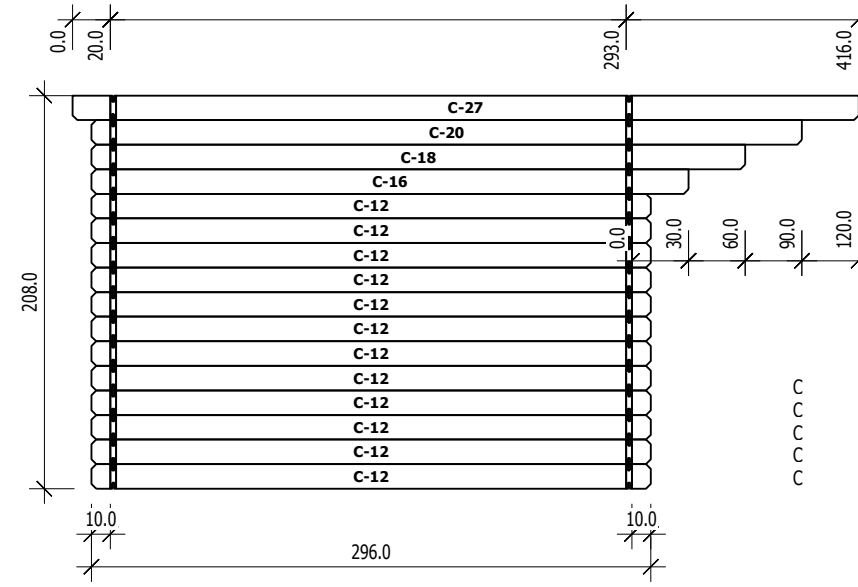
Nr. 51 4.0x6.0x276.0 - 2vnt

30

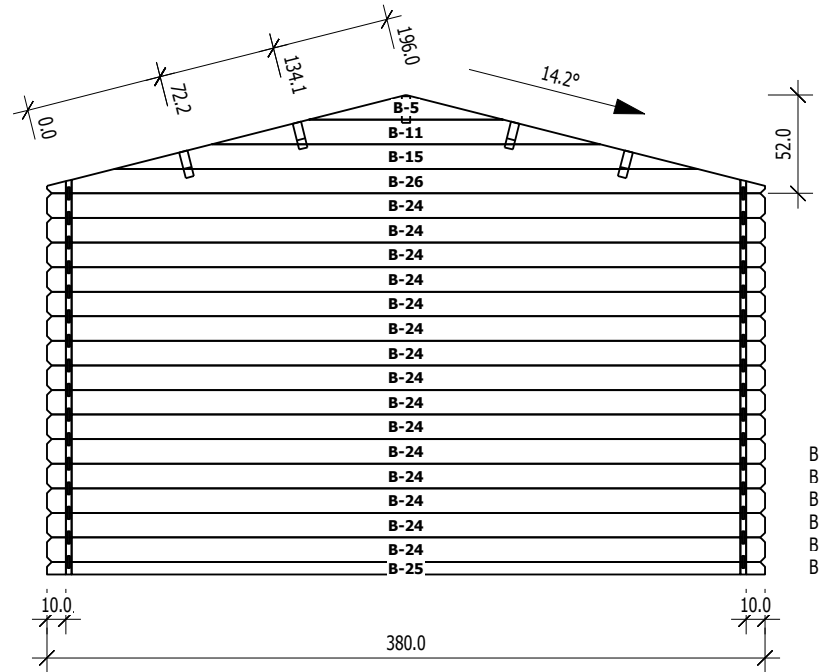




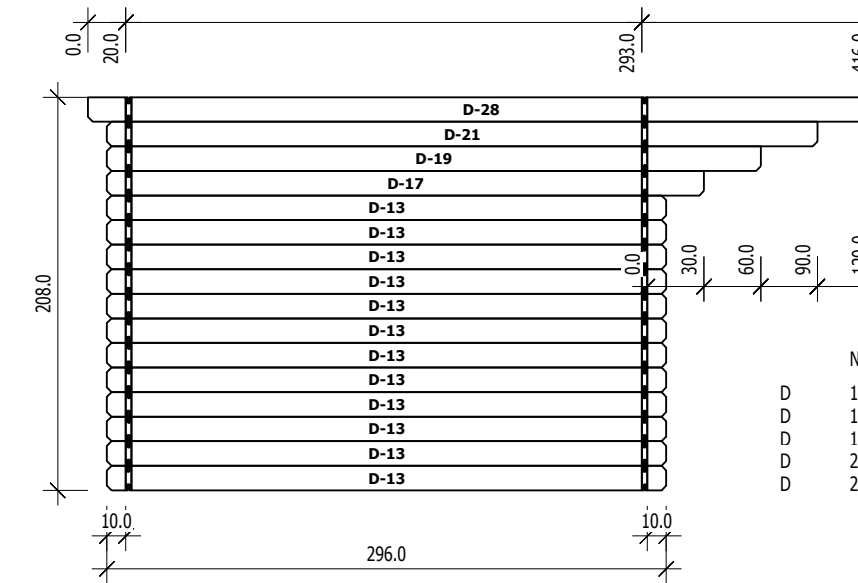
Nr	H	L	Psc
A 1	13.0	50.0	6
A 2	13.0	55.0	20
A 3	6.5	55.0	1
A 4	13.0	102.9	1
A 6	13.0	185.0	6
A 7	6.5	185.0	1
A 8	13.0	185.0	1
A 9	13.0	185.0	1
A 10	13.0	205.7	1
A 14	13.0	308.6	1
A 22	13.0	380.0	1
A 23	13.0	380.0	1



Nr	H	L	Psc
C 12	13.0	296.0	12
C 16	13.0	316.0	1
C 18	13.0	346.0	1
C 20	13.0	376.0	1
C 27	13.0	416.0	1



Nr	H	L	Psc
B 5	13.0	102.9	1
B 11	13.0	205.7	1
B 15	13.0	308.6	1
B 24	13.0	380.0	15
B 25	6.5	380.0	1
B 26	13.0	380.0	1



Nr	H	L	Psc
D 13	13.0	296.0	12
D 17	13.0	316.0	1
D 19	13.0	346.0	1
D 21	13.0	376.0	1
D 28	13.0	416.0	1