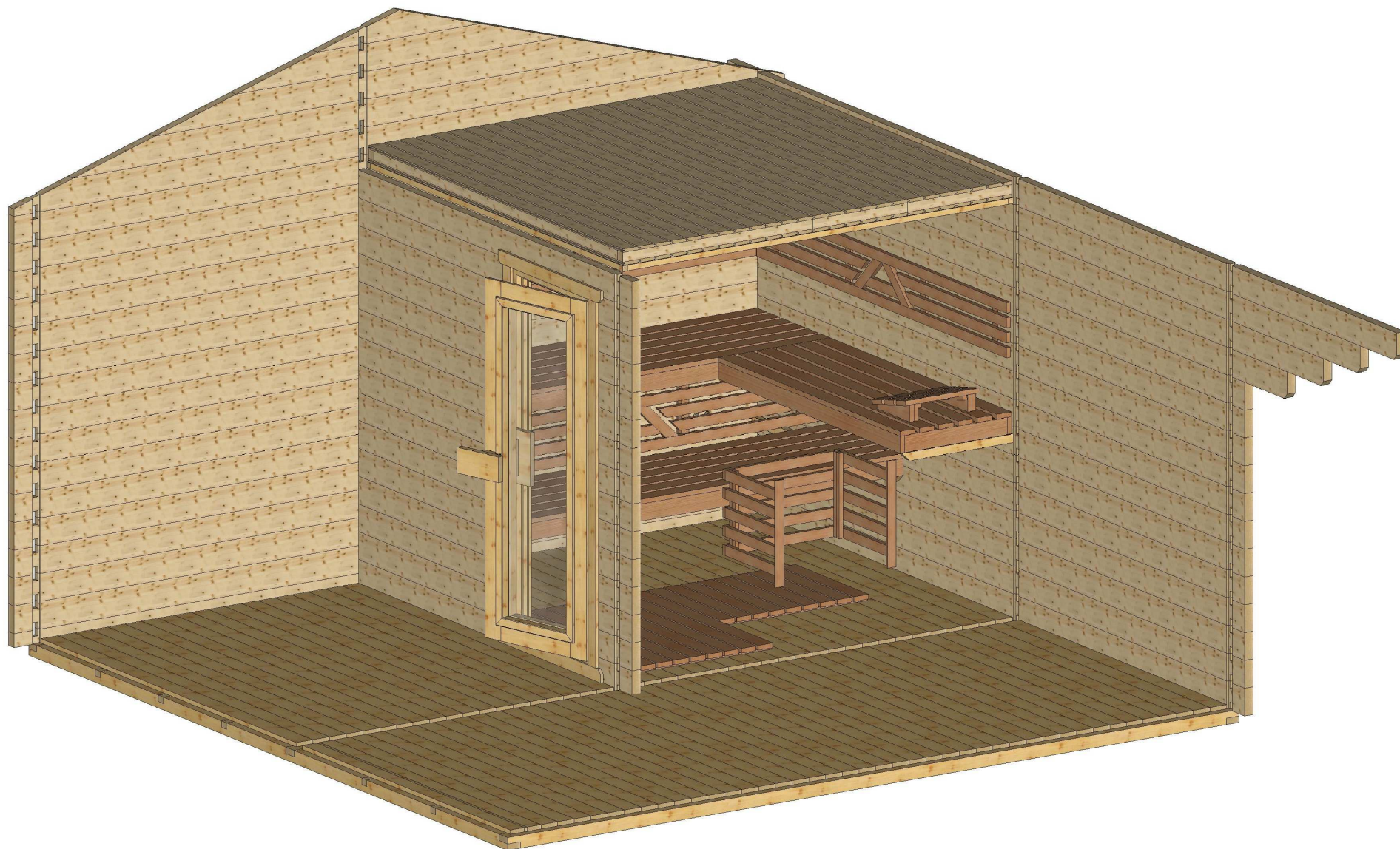




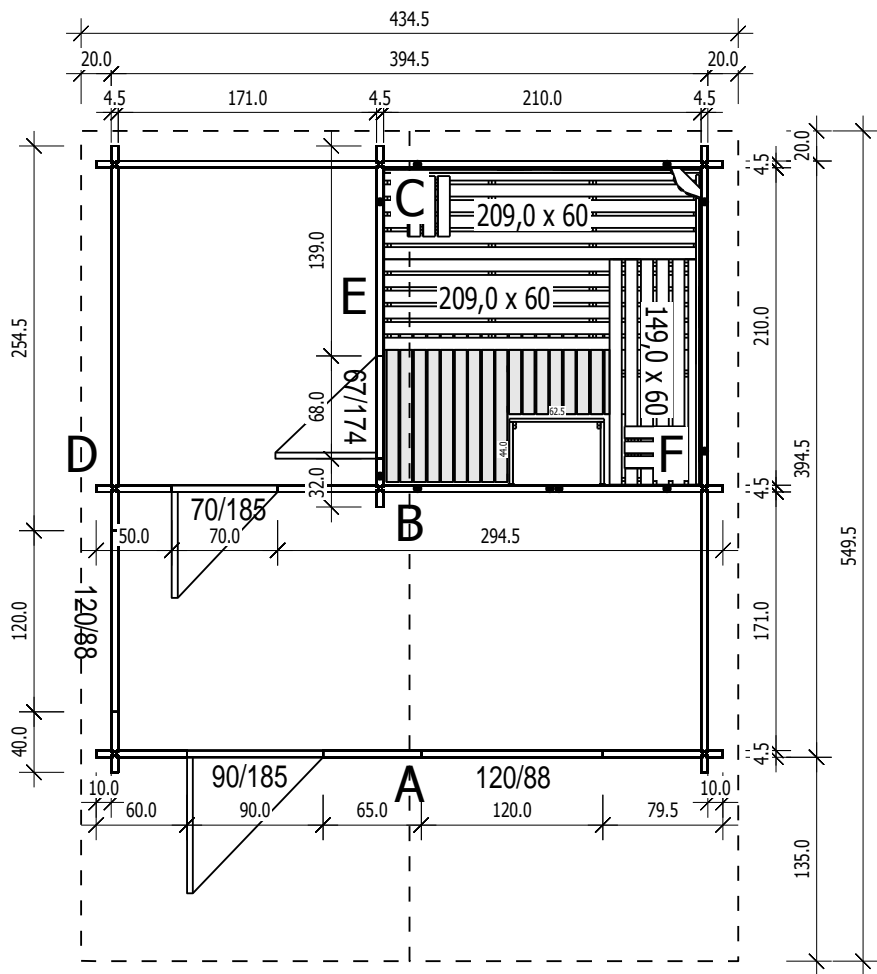
Bemerkung: die Ansicht von Turen, Fenster und anderen Teilen kann abweichen von diesem Bild





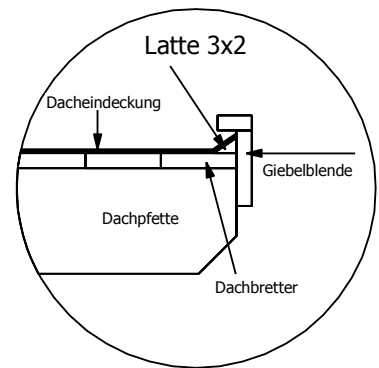
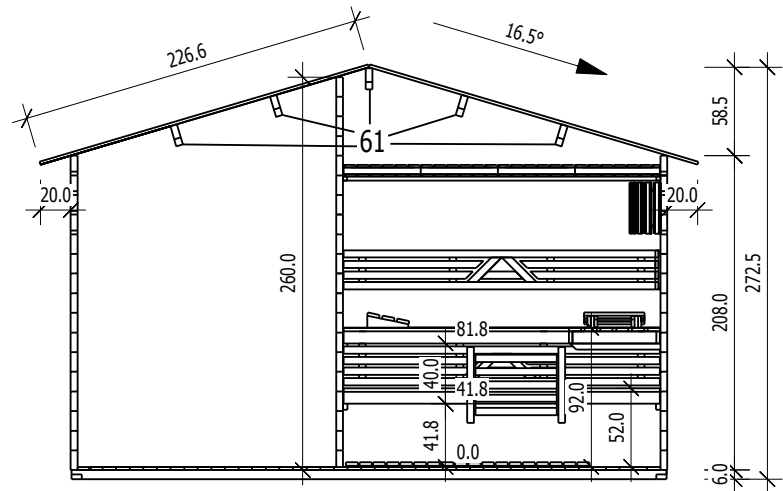
Bemerkung: die Ansicht von Turen, Fenster und anderen Teilen kann abweichen von diesem Bild

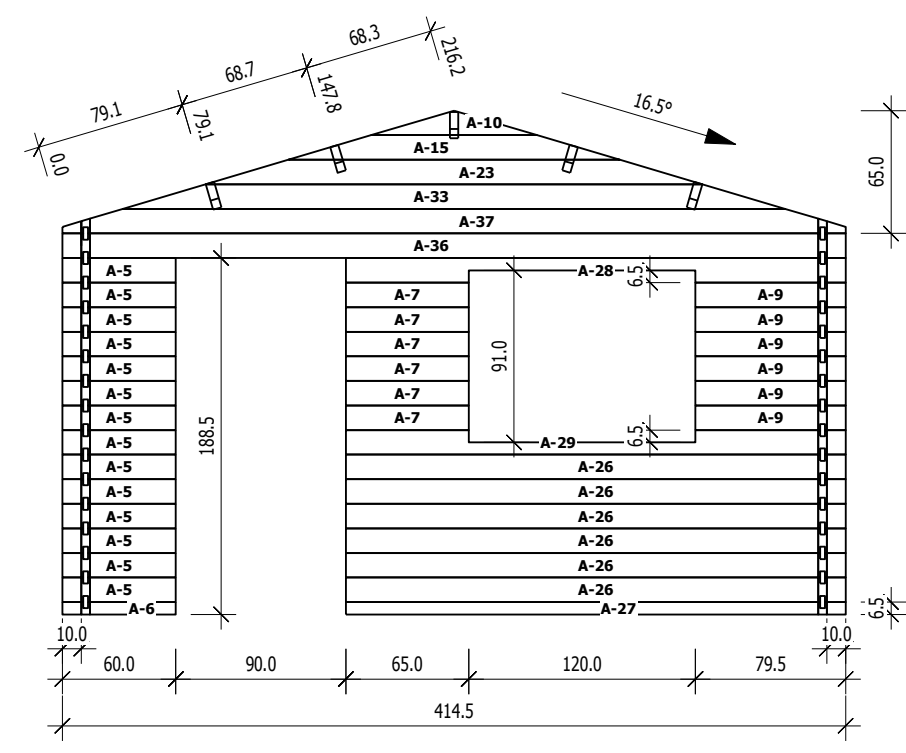
Grundriss



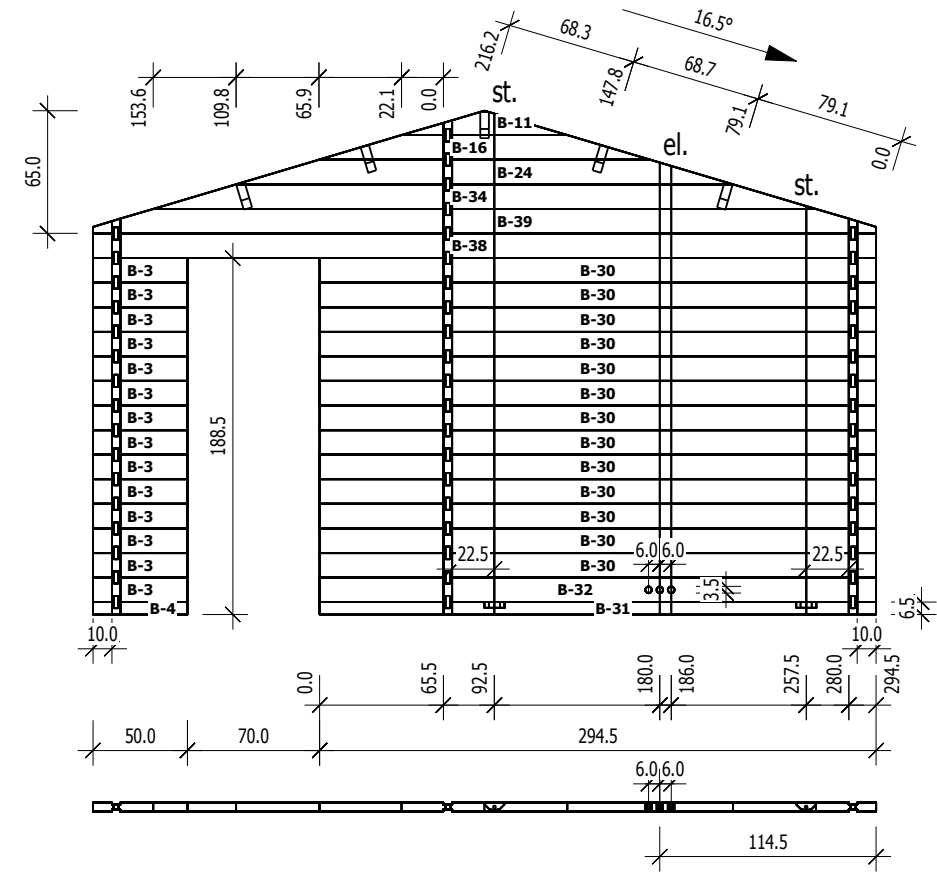
Schnitt

4,5

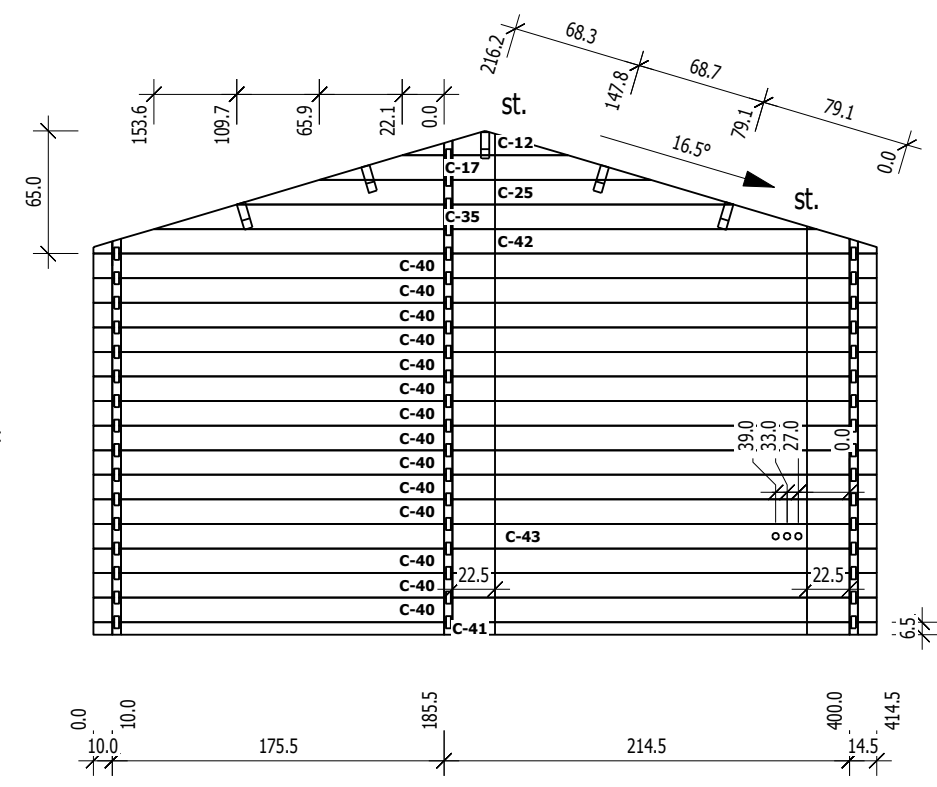




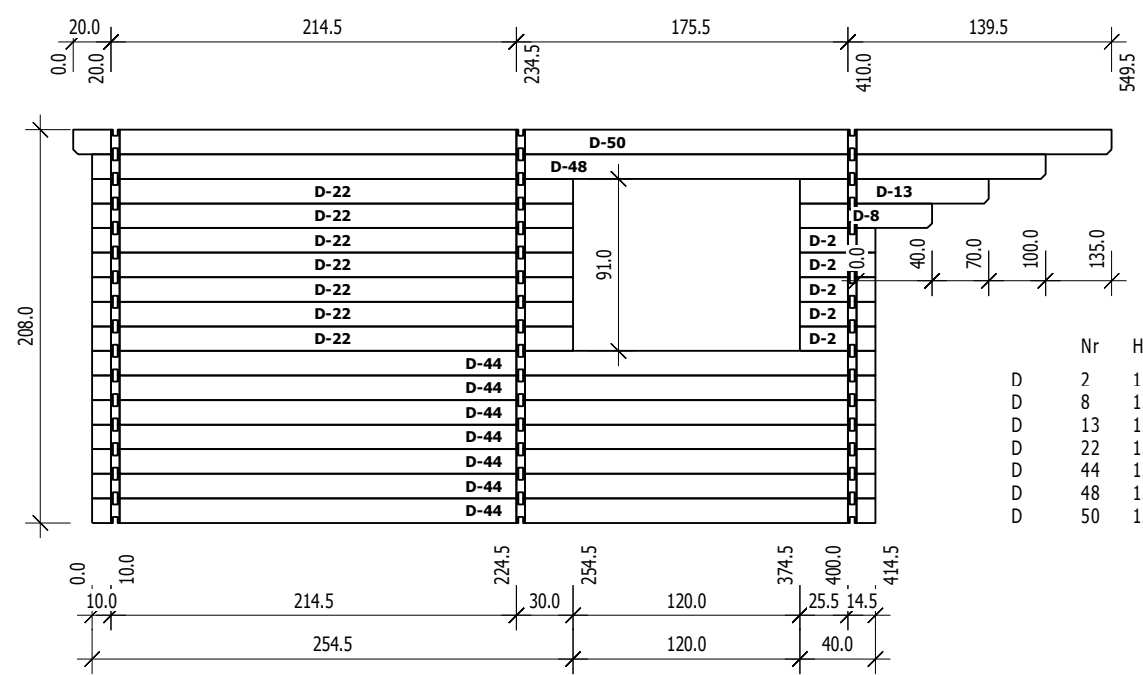
	Nr	H	L	Psc
A	5	13.0	60.0	14
A	6	6.5	60.0	1
A	7	13.0	65.0	6
A	9	13.0	79.5	6
A	10	13.0	87.7	1
A	15	13.0	175.3	1
A	23	13.0	263.0	1
A	26	13.0	264.5	6
A	27	6.5	264.5	1
A	28	13.0	264.5	1
A	29	13.0	264.5	1
A	33	13.0	350.7	1
A	36	13.0	414.5	1
A	37	13.0	414.5	1



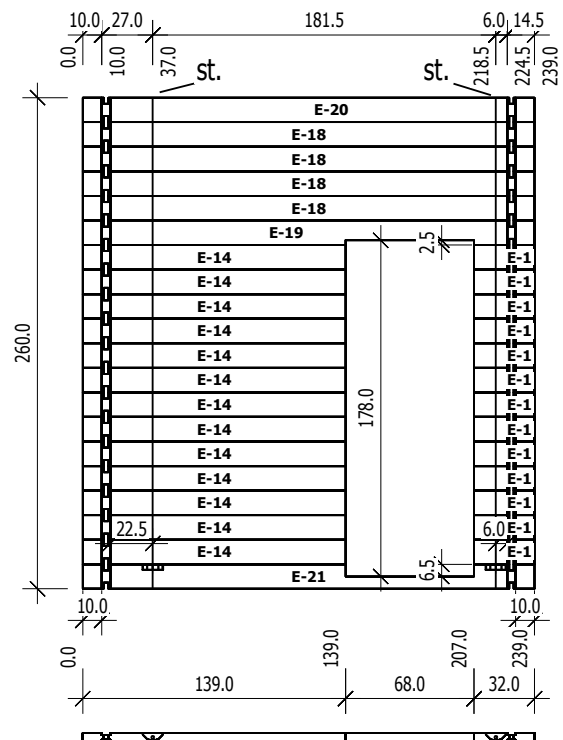
	Nr	H	L	Psc
B	3	13.0	50.0	14
B	4	6.5	50.0	1
B	11	13.0	87.7	1
B	16	13.0	175.3	1
B	24	13.0	263.0	1
B	30	13.0	294.5	13
B	31	6.5	294.5	1
B	32	13.0	294.5	1
B	34	13.0	350.7	1
B	38	13.0	414.5	1
B	39	13.0	414.5	1



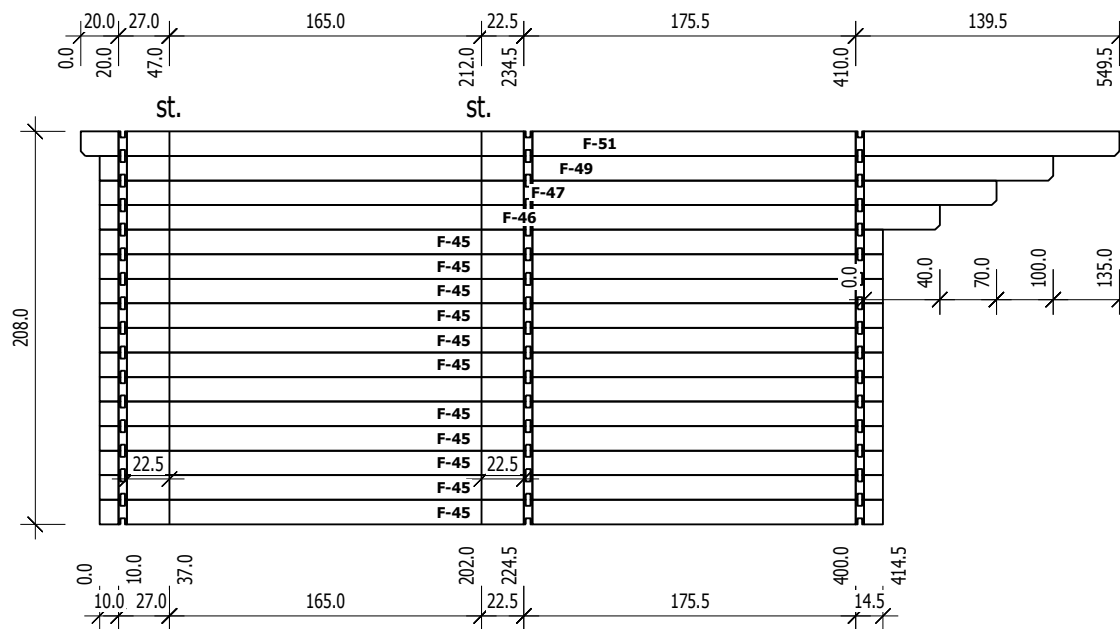
	Nr	H	L	Psc
C	12	13.0	87.7	1
C	17	13.0	175.3	1
C	25	13.0	263.0	1
C	35	13.0	350.7	1
C	40	13.0	414.5	14
C	41	6.5	414.5	1
C	43	13.0	414.5	1
C	42	13.0	414.5	1



	Nr	H	L	Psc
D	2	13.0	40.0	5
D	8	13.0	70.0	1
D	13	13.0	100.0	1
D	22	13.0	254.5	7
D	44	13.0	414.5	7
D	48	13.0	504.5	1
D	50	13.0	549.5	1



Nr	H	L	Psc
E 1	13.0	32.0	13
E 14	13.0	139.0	13
E 18	13.0	239.0	4
E 19	13.0	239.0	1
E 20	13.0	239.0	1
E 21	13.0	239.0	1



Nr	H	L	Psc
F 45	13.0	414.5	12
F 46	13.0	444.5	1
F 47	13.0	474.5	1
F 49	13.0	504.5	1
F 51	13.0	549.5	1

Dachelemente

